



[Manuals.plus](#) /

› [ABBREE](#) /

› [ABBREE MR-25 Marine VHF Handheld Radio User Manual](#)

ABBREE MR-25

User Manual for ABBREE MR-25 Marine VHF Handheld Radio

Model: MR-25 | Brand: ABBREE

INTRODUCTION

The ABBREE MR-25 Marine VHF Handheld Radio is a robust and reliable communication device designed for marine environments. Featuring IP67 waterproofing, it floats and can withstand submersion, ensuring safety and communication even when dropped in water. This radio includes a vibration draining function to clear water from the speaker and microphone, dual/tri-watch capabilities for monitoring multiple channels, and NOAA weather alerts to keep you informed of severe weather conditions. Its long-range capabilities and noise-cancelling microphone ensure clear communication.



Figure 1: ABBREE MR-25 Marine VHF Handheld Radio with accessories.

WHAT'S IN THE BOX

Upon opening your ABBREE MR-25 package, please verify that all the following components are included:

- 1 x ABBREE MR-25 Marine Radio
- 5 x AAA 850 mAh Ni-MH Rechargeable Batteries
- 1 x Charging Cable
- 1 x DC Charger (Car Charger)
- 1 x AC Adapter (Wall Charger)
- 1 x Belt Clip
- 1 x Sling (Hand Strap)
- 1 x Instruction Manual

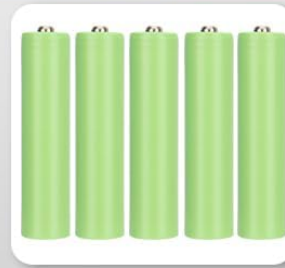
Standard parcel list



Radio



Antenna



Batteries



Charging cable



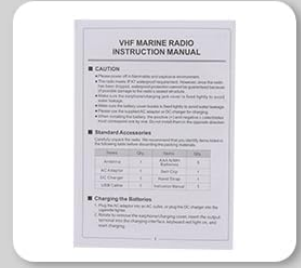
DC charger



AC adapter



Clip/Lanyard



Instructions

Figure 2: All components included in the standard package.

SETUP GUIDE

1. Battery Installation

The ABBREE MR-25 radio uses 5 AAA 850 mAh Ni-MH rechargeable batteries (included). Ensure correct polarity when installing the batteries.

Important Notice

▶ Charging Problem

If the battery is not properly installed, it may result in inability to charge or poor contact, making it impossible to charge, you need to remove the battery and reinstall it

▶ How to correctly install batteries

Please ensure that the "+" and "-" terminals correspond to the icons marked on the radio!

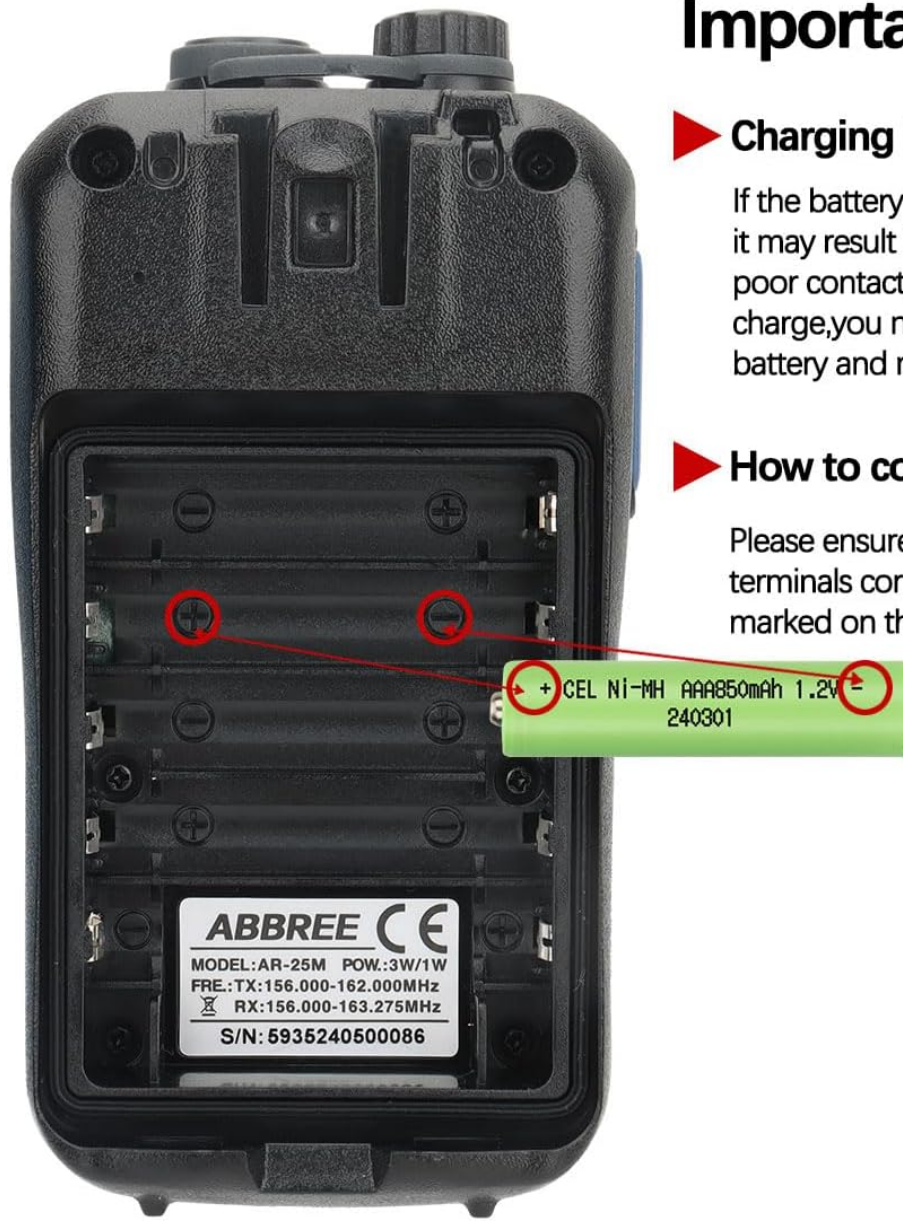


Figure 3: Proper orientation for installing the 5 AAA Ni-MH rechargeable batteries.

Important Notice: If the battery is not properly installed, it may result in inability to charge or poor contact, making it impossible to charge. You need to remove the battery and reinstall it, ensuring the "+" and "-" terminals correspond to the icons marked on the radio.

2. Charging the Radio

The radio supports two charging methods: using the AC adapter (wall charger) or the DC charger (car charger). The separate USB port on the radio cannot be used for charging directly.

- Connect the charging cable to the radio's charging port.
- Connect the other end of the charging cable to either the AC adapter or the DC charger.
- Plug the AC adapter into a wall outlet or the DC charger into your vehicle's power socket.
- When charging is successful, the keyboard will light up red. The charging complete indicator will not change, but the battery bar on the display will show three bars to indicate a full charge.

Support 2 Charging Methods



The walkie talkie comes with AC adaptor, DC adaptor and charging cable, more convenient to be charged at home or in the car.

Figure 4: The radio can be charged using either the AC wall adapter or the DC car charger.

Video 1: Demonstrates the unboxing, battery installation, and charging process for the ABBREE MR-25 Marine VHF Radio.

OPERATING INSTRUCTIONS

Key Features Overview



Figure 5: Visual representation of the MR-25's main features.

IP67 Waterproof and Floating Design

The ABBREE MR-25 is designed with IP67 waterproofing, meaning it is protected from dust and can be submerged in up to 1 meter of water for 30 minutes. Its design also allows it to float on the surface of the water if dropped, making retrieval easy and ensuring continuous communication in marine environments.



Figure 6: The radio's IP67 waterproof rating and floating capability.

Vibration Draining Function

After exposure to water, the radio features a vibration draining function. This function helps to vibrate and discharge water from the speaker and microphone, preventing potential damage to the internal circuitry and ensuring clear audio output.

Vibration Water Draining Function

Vibration draining function helps to vibrate and drain water out of speaker microphone, avoid circuit damage.



Figure 7: The radio actively drains water from its speaker and microphone.

Dual/Tri Watch Function

The Dual/Tri Watch feature allows you to monitor the reception of multiple channels simultaneously. Dual Watch monitors the current channel and Channel 16. Tri Watch monitors the current channel, Channel 16, and a user-selected CALL Channel. This ensures you can communicate with your friends while also receiving important announcements from Channel 16, such as urgent marine information broadcasts or storm warnings.

Dual/Tri Watch

Dual watch: Watch and monitor in turns between the current channel and Channel 16.

Tri watch: Watch and monitor in turns among the current channel, Channel 16 and CALL Channel.



Figure 8: The radio's display showing the Dual/Tri Watch function in action.

NOAA Weather Alert

Stay informed about severe weather with the NOAA Alert feature. The radio can scan and receive weather reports from up to 10 weather channels, providing timely warnings for any emergency situation and ensuring the safety of personnel and vessels.



Provide Timely Warnings for any Emergency Situation

Figure 9: The radio provides timely warnings for emergency situations via NOAA Weather Alert.

LCD Display and Backlight Keyboard

The radio features an LCD display with adjustable backlight and an automatic backlit keyboard for easy operation, even in low-light conditions.



Figure 10: Clear LCD display and backlit keyboard for enhanced usability.

MAINTENANCE

To ensure the longevity and optimal performance of your ABBREE MR-25 Marine VHF Handheld Radio, follow these maintenance guidelines:

- **Cleaning:** Wipe the radio with a soft, damp cloth. Do not use harsh chemicals or abrasive cleaners. Ensure the radio is dry before storing or charging.
- **Water Draining:** Regularly use the vibration draining function after exposure to water to prevent water accumulation in the speaker and microphone.
- **Battery Care:** Use only the specified Ni-MH rechargeable batteries. If the radio will not be used for an extended period, remove the batteries to prevent leakage.
- **Storage:** Store the radio in a cool, dry place away from direct sunlight and extreme temperatures.
- **Physical Inspection:** Periodically check the antenna, battery cover, and charging port for any signs of damage or wear. The radio features a rubber texture for greater abrasion resistance and is highly resistant to salt spray and corrosion.



Figure 11: The radio's durable rubber texture enhances abrasion resistance and protects against salt spray and corrosion.

TROUBLESHOOTING

This section addresses common issues you might encounter with your ABBREE MR-25 radio.

Problem	Possible Cause	Solution
Radio does not turn on or charge.	Incorrect battery installation. Using the wrong charging method (e.g., separate USB port). Faulty charging cable or adapter.	Remove batteries and reinstall them, ensuring correct positive (+) and negative (-) orientation as marked on the radio. Ensure you are using the provided AC adapter or DC car charger with the charging cable. The separate USB port is not for charging. Verify that the keyboard lights up red when charging; if not, check connections or try a different power outlet/source.
Poor audio quality after water exposure.	Water trapped in speaker/microphone.	Activate the vibration draining function to expel water from the speaker and microphone.
Cannot receive weather alerts.	Not tuned to a NOAA weather channel or out of range.	Ensure you are in an area with NOAA weather channel coverage and that the radio is set to scan or monitor the correct weather channels.

SPECIFICATIONS

Feature	Detail
Brand	ABBREE
Model Number	MR-25
Item Weight	1.15 pounds
Package Dimensions	9.37 x 7.91 x 2.95 inches
Batteries	5 AAA Ni-MH rechargeable batteries (included)
Color	Black
Number of Channels	16
Special Features	Floating, Long Range, Noise Cancelling, Waterproof, Weather Alert
Frequency Range (TX)	156.000-162.000MHz
Frequency Range (RX)	156.000-163.275MHz
Tuner Technology	VHF
Voltage	6 Volts (DC)
Water Resistance Level	IP67 Waterproof
FCC ID	2BDQ3-MR-25

WARRANTY INFORMATION

Based on the provided product information, there is no explicit warranty stated for the ABBREE MR-25 Marine VHF Handheld Radio. For specific warranty details or to inquire about potential coverage, please contact the manufacturer directly.

CUSTOMER SUPPORT

For further assistance, technical support, or inquiries regarding your ABBREE MR-25 Marine VHF Handheld Radio, please refer to the contact information provided in the physical instruction manual included with your product or visit the official ABBREE website.

Manufacturer: ABBREE