



Manuals.plus /

› IG INGLAM /

› IG INGLAM Air Straight Hair Dryer Straightener User Manual

## IG INGLAM AB0333

# IG INGLAM Air Straight Hair Dryer Straightener User Manual

Model: AB0333 | Brand: IG INGLAM

## INTRODUCTION

The IG INGLAM Air Straight is an innovative 2-in-1 hair styling tool designed to dry and straighten hair simultaneously. Featuring a unique harmonica shape and advanced ionic technology, it aims to provide efficient styling with minimal heat damage. This manual provides essential information for safe and effective use of your new device.



Image: The IG INGLAM Air Straight device, showcasing its unique design and airflow vents.

## SAFETY INFORMATION

Please read all safety instructions carefully before using the appliance to reduce the risk of electric shock, burns, fire, or injury to persons.

- This product operates within a voltage range of 110-125V. If using in regions with 220V supply (e.g., Europe, UK, Australia, parts of Asia), a voltage converter adapter is required. Failure to use a proper voltage converter may result in damage to the product and render it inoperable.
- To turn the machine ON/OFF, press and hold the power button for a full 3 seconds.
- The product's air exit area may become hot during use. Allow it to cool completely before touching or storing.
- Do not use this appliance near water, such as in a bathtub, shower, or sink.
- Always unplug the appliance immediately after use.

- Keep out of reach of children.

## PRODUCT FEATURES

- **Unique Harmonica Shape Design:** Features a linear outlet directional airflow for simultaneous straightening and drying.
- **Wet-to-Dry Straight Intelligent Design:** Straightens and aligns tresses efficiently without requiring extreme heat, preserving hair strength and natural moisture.
- **110,000 RPM Brushless Motor:** Enables faster straightening compared to traditional ceramic straighteners.
- **Customizable Settings:** Four heat settings (High, Mid, Low, Cool) and three wind speed settings for tailored styling.
- **200 Million Negative Ions:** Emits high concentrations of negative ions to deeply penetrate hair, providing lasting protection, nourishment, and frizz-free, shiny results.
- **NTC Intelligent Heat Control:** Measures airflow temperature 100 times per second and adjusts to prevent extreme heat damage.
- **Lock Button Design:** Securely locks the machine arms. Squeeze plates to activate airflow, release to reduce airflow for quieter styling.

## Simplify Your Styling Routine

One-Step, Wet to Straight



Image: Close-up of the control panel showing wind speed and temperature LED lights, and power button.



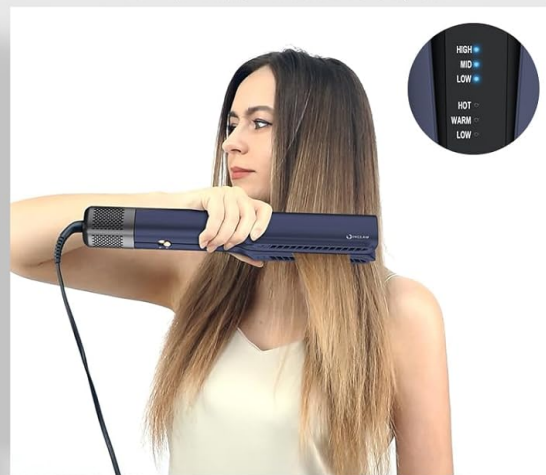
1. Towel-dry your hair, then apply your preferred styling products



**2. Pre blow-dry the roots.**  
Press the power button for 3 seconds to turn the machine on/off



3. Section hair and straighten several times until dry



4. Finish styling with cold air

Image: Diagram illustrating the air-straightening approach with no hot plates, showing maximum temperature of 284°F compared to traditional straighteners at 450°F.

## SETUP

Before first use, ensure the device is clean and free from any packaging materials. Uncoil the power cord completely.

- Unpack all components: the Air Straight device, comb, and storage pouch.
- Inspect the device for any visible damage. Do not use if damaged.
- Plug the power cord into a suitable electrical outlet (110-125V). Ensure the red button on the cord's plug is pressed if it's a GFCI plug.

# INTELLIGENT HEAT CONTROL

Auto-Optimized Heat Setting

(Wind Speed LED Light)

(Temperature LED Light)

**Wind Speed Switch**  
**3 Air Setting**



**HIGH**



**MID**



**LOW**

**3 AIR SPEED**

HIGH  
MID  
LOW

HOT  
WARM  
LOW



**Power On/Off**

Long Press for **3s** Turn On Or Close

**Air Temp. Switch**  
**4 Temp**



**4 STABLE HEAT**

Image: The IG INGLAM Air Straight device, its packaging, comb, and storage pouch, with dimensions and weight indicated.

## OPERATING INSTRUCTIONS

Follow these steps for optimal drying and straightening results:

1. **Prepare Hair:** Towel-dry your hair to remove excess water. Apply your preferred heat protectant or styling products.
2. **Power On:** Press and hold the power button on the device for 3 seconds to turn it on.
3. **Pre-blow Dry Roots:** For best results, pre-blow dry your roots using the device.
4. **Select Settings:** Use the wind speed switch to choose from High, Mid, or Low air settings. Use the air temperature switch to select Hot, Warm, Normal, or Cold.
5. **Section Hair:** Divide your hair into manageable sections.
6. **Straighten and Dry:** Take a section of hair and place it between the plates of the Air Straight. Squeeze the handles together to activate the directional airflow. Glide the device slowly and evenly down the hair strand. Repeat several times until the section is dry and straight.
7. **Finish with Cold Air:** Once styling is complete, use the Cool setting to set your style and add shine.
8. **Power Off:** Press and hold the power button for 3 seconds to turn off the device. Unplug from the

outlet.

# GAME-CHANGER IN HAIR STYLING

INGLAM

Increase  
Hair  
Toughness  
**60%↑**

Increase  
Hair  
Hydration  
**28%↑**

Reduce  
Hair  
Dye Fading  
**60%↓**

\*The data is sourced from IG INGLAM laboratory

Image: Visual guide demonstrating the four steps of using the IG INGLAM Air Straight: towel-drying, pre-blow drying roots, sectioning and straightening, and finishing with cold air.

# Naturally straight blow out

Say goodbye to frizz and hello to effortlessly sleek hair



Image: A split image showing hair before and after using the IG INGLAM Air Straight, demonstrating a naturally straight blow-out with reduced frizz.

## MAINTENANCE

Proper maintenance ensures the longevity and performance of your IG INGLAM Air Straight.

- **Cleaning:** Ensure the device is unplugged and completely cool before cleaning. Wipe the exterior with a soft, damp cloth. Do not use abrasive cleaners or immerse the device in water.
- **Air Vents:** Periodically check the air intake and outlet vents for any dust or hair buildup. Gently clean with a small brush or soft cloth to ensure unobstructed airflow.
- **Storage:** Store the device in its provided pouch or a safe, dry place when not in use. Avoid wrapping the cord tightly around the appliance, as this can damage the cord.

## TROUBLESHOOTING

If you encounter issues with your IG INGLAM Air Straight, refer to the following common problems and solutions:

- **Device Does Not Turn On:**

- Ensure the device is securely plugged into a working electrical outlet.
  - If the power cord has a red reset button (GFCI), press it firmly.
  - Remember to press and hold the power button on the device for a full 3 seconds to activate it.
- **Airflow is Weak or Inconsistent:**
    - Check if the air intake and outlet vents are clear of any obstructions (dust, hair).
    - Ensure the handles are squeezed together firmly to activate full airflow. Releasing them slightly will reduce airflow for quieter operation.
- **Hair Not Straightening Effectively:**
    - Ensure hair is towel-dried before use; this device is designed for wet-to-dry styling.
    - Use smaller sections of hair.
    - Adjust heat and wind speed settings to a higher level if needed for your hair type.
    - Pass the device slowly and evenly through each section multiple times until desired straightness is achieved.
- **Device Feels Too Hot:**
    - While designed to prevent extreme heat damage, the air exit area will become warm during use. This is normal.
    - If the device feels excessively hot or emits a burning smell, unplug it immediately and contact customer support.

## SPECIFICATIONS

Attribute	Detail
Product Dimensions	13.5 x 2.2 x 2.2 inches
Item Weight	1.1 Pounds (1.37 lbs including UL plug)
Model Number	AB0333
Manufacturer	IG INGLAM
Power	1000W
Voltage	125V
Hair Type Compatibility	Color Treated, Curly, Frizzy, Normal, Straight, Thick, Thin, Wavy
Material	Plastic

## WARRANTY AND SUPPORT

IG INGLAM is committed to customer satisfaction. Your product is backed by a hassle-free return policy if you are unsatisfied with your purchase.

- **30-Day No-Risk Money Back:** If you are not satisfied with your purchase, you may be eligible for a

return within 30 days. Please refer to your purchase platform's return policy for specific details.

- **Customer Service:** For any inquiries, technical support, or warranty claims, please contact IG INGLAM customer service. Support is available 24 hours a day, 7 days a week. Refer to the contact information provided with your product packaging or visit the official IG INGLAM store online.