

[Manuals.plus](#) /

> [KAI-ROAD](#) /

> KAI-ROAD White Vanity Desk with Mirror and Light - 47-inch Model with 8 Fabric Drawers and Power Outlet Instruction Manual

KAI-ROAD Vanity Desk

KAI-ROAD White Vanity Desk with Mirror and Light

MODEL: VANITY DESK (47-INCH WITH 8 DRAWERS)

Important Safety Information

Please read and understand all instructions before assembly and use. Keep this manual for future reference.

- Always unplug the vanity desk from the power source before assembly, cleaning, or maintenance.
- Exercise caution during assembly to avoid sharp edges and pinch points.
- Do not use a damp cloth or liquid cleaners directly on electrical components, including the mirror lights and power outlet.
- Ensure all connections are secure and stable after assembly.
- This product is intended for indoor use only.

Package Contents

Verify that all components listed below are present before beginning assembly:

- Vanity Desk Frame (Metal)
- Desk Top (Engineered Wood)
- Lighted Mirror Unit
- Cushioned Stool
- 8 Fabric Drawers
- Built-in Power Outlet Unit (2 AC sockets, 2 USB ports)
- Side Storage Pocket
- Assembly Hardware (screws, tools, etc.)
- Instruction Manual

Assembly Instructions

The KAI-ROAD Vanity Desk is designed for straightforward assembly. All parts are clearly labeled, and detailed step-by-step instructions are included in the separate assembly guide. Please follow the provided guide carefully for a hassle-free setup.

Typical assembly involves:

1. Attaching the metal frame components.
2. Securing the engineered wood desktop.
3. Assembling and inserting the fabric drawers.
4. Mounting the lighted mirror unit.
5. Installing the power outlet unit and connecting its power cord.
6. Assembling the cushioned stool.



Image: Fully assembled KAI-ROAD White Vanity Desk, showcasing its structure and components.

For a visual overview of the assembly process, please refer to the video below:

Your browser does not support the video tag.

Video: A detailed review of the KAI-ROAD Vanity, including glimpses of the assembly process and features.

Operating Instructions

1. Lighted Mirror Operation

The vanity mirror features integrated LED lights with touch controls for power, color mode, and brightness adjustment.

- **Power On/Off:** Lightly touch the power button icon on the mirror surface to turn the lights on or off.
- **Change Color Mode:** With the lights on, tap the power button icon repeatedly to cycle through three color temperature modes: cool white (3000K), warm yellow (4000K), and natural daylight (6000K).
- **Adjust Brightness:** To dim or brighten the lights, press and hold the power button icon. The brightness will gradually adjust. Release your finger when the desired brightness is reached. The mirror will remember your last brightness setting for each color mode.

3 COLOR LIGHTING MODES



3000K

4000K

6000K

Touch the switch to change the color mode, or long press the switch to adjust the brightness

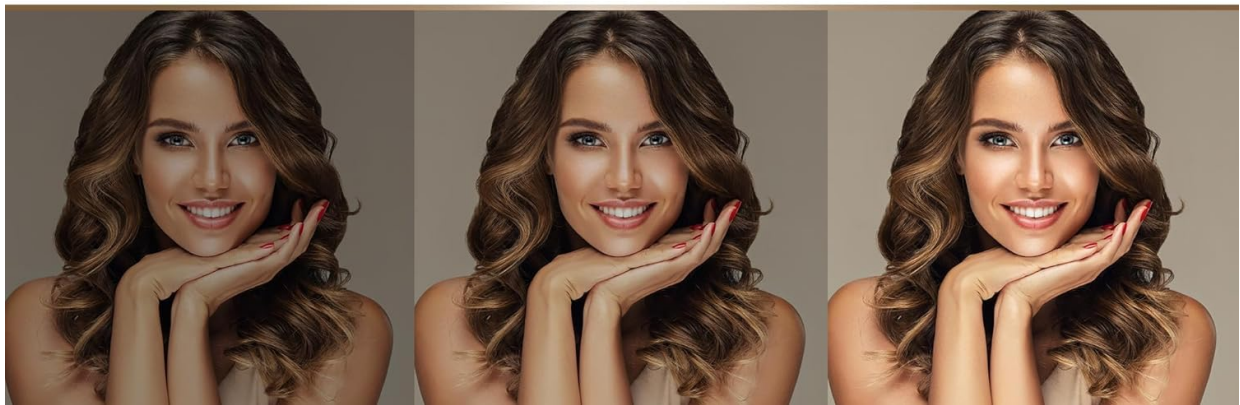


Image: Illustration of the three color lighting modes (3000K, 4000K, 6000K) and touch controls for brightness adjustment.

2. Built-in Power Outlet Usage

The vanity desk includes a convenient built-in charging station with two standard AC plug sockets and two USB ports.

- Plug the vanity desk's main power cord into a wall outlet.
- Use the AC sockets to power hair styling tools, lamps, or other small appliances.
- Use the USB ports to charge mobile phones, tablets, or other USB-powered devices.
- Ensure devices are compatible with the provided voltage and current specifications.



Built-in Power Strip

2 Outlets & 2 USB Ports



Image: Close-up view of the built-in power strip, highlighting the AC outlets and USB ports.

See the power outlet in action:

Your browser does not support the video tag.

Video: A demonstration of the Threehio White Makeup Vanity Desk, showing the power outlet and drawer functionality.

Maintenance

To ensure the longevity and appearance of your KAI-ROAD Vanity Desk, follow these maintenance guidelines:

- **Cleaning:** Wipe the desk surfaces with a soft, slightly damp cloth. Avoid harsh chemicals or abrasive cleaners that could damage the finish.
- **Spills:** Clean up spills immediately to prevent staining, especially on the engineered wood surfaces and fabric drawers.
- **Electrical Components:** Do not use liquid cleaners directly on the mirror lights or power outlet. Use a dry cloth for dusting.

- **Drawer Care:** The fabric drawers can be spot cleaned with a mild detergent and water. Allow to air dry completely.

Troubleshooting

If you encounter any issues with your vanity desk, please refer to the following common solutions:

- **Mirror Lights Not Working:** Ensure the vanity desk's main power cord is securely plugged into a functional wall outlet. Check if the power button on the mirror is activated.
- **Power Outlets Not Functioning:** Verify the main power cord is plugged in. Test the wall outlet with another device to confirm it is supplying power.
- **Drawers Sticking/Not Sliding Smoothly:** Check for any obstructions in the drawer tracks. Ensure the fabric drawers are correctly assembled and seated within their designated slots.
- **Desk Instability:** Confirm all assembly screws and fasteners are tightened. Ensure the desk is placed on a flat, level surface.

If problems persist, please contact customer support for further assistance.

Specifications

Brand	KAI-ROAD
Model	Vanity Desk (47-inch with 8 Drawers)
Desk Dimensions (L x W x H)	47"W x 15.7"D x 31.5"H (119.4 cm x 39.9 cm x 80 cm)
Stool Dimensions (L x W x H)	14.57"W x 11"D x 17.7"H (37 cm x 27.9 cm x 45 cm)
Item Weight	30 pounds (13.6 kg)
Frame Material	Metal
Desktop Material	Engineered Wood
Drawer Material	Fabric
Stool Seat Material	PU Leather (padded)
Mirror Lighting Modes	3 (3000K, 4000K, 6000K) with dimmable function
Power Outlet	2 Standard AC Sockets (125V/12A), 2 USB Ports (5V/2A)
Power Cord Length	5.9 ft

Product Dimensions



Heavy Duty
Metal Design



Environment all
protection



8 Drawers

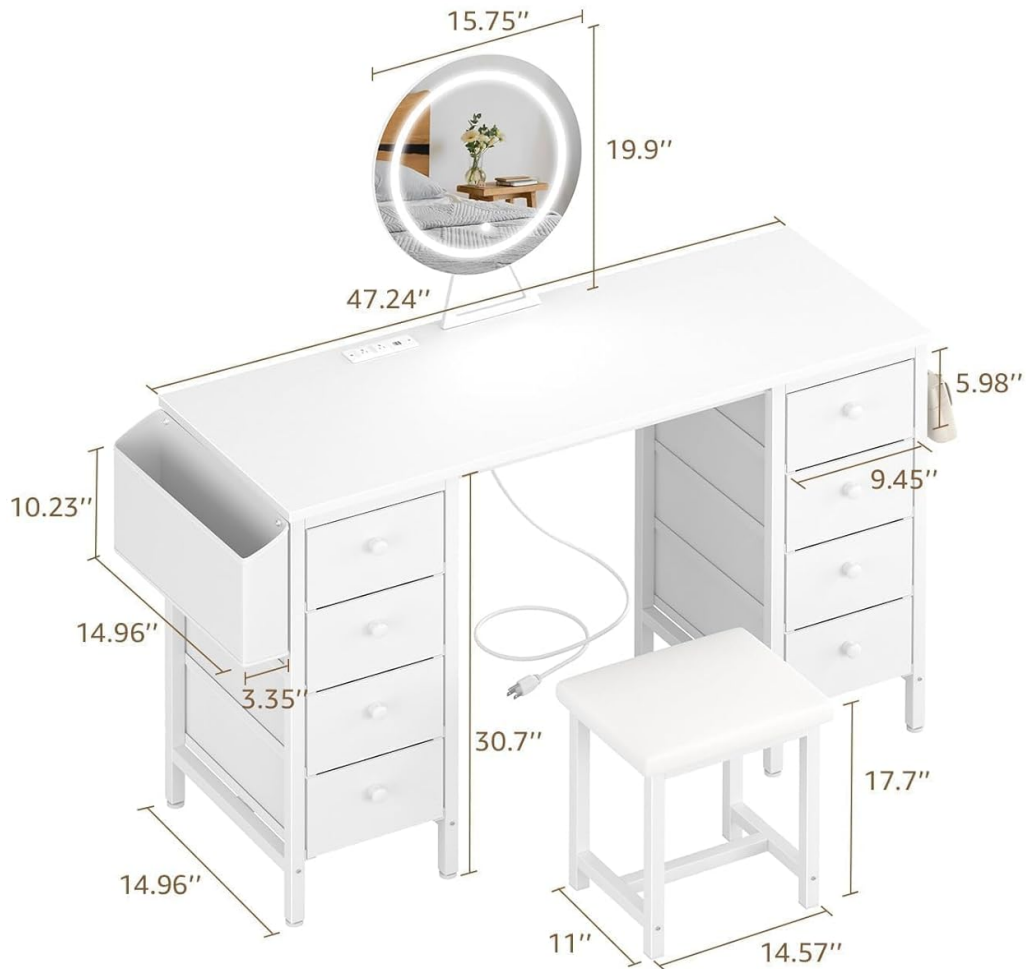


Image: Diagram illustrating the dimensions of the vanity desk and stool.

Warranty and Support

For warranty information, replacement parts, or any product-related inquiries, please contact KAI-ROAD customer service through your original purchase platform or visit the official KAI-ROAD store online. Please have your purchase details and model number ready for efficient assistance.