



Manuals.plus /

› Atopskins /

› Atopskins 6-in-1 Hair Styler User Manual

Atopskins ATDE-632-White-SJ10

Atopskins 6-in-1 Hair Styler User Manual

Model: ATDE-632-White-SJ10

1. INTRODUCTION

Thank you for choosing the Atopskins 6-in-1 Hair Styler. This versatile hot air brush system is designed to provide a comprehensive solution for drying, volumizing, straightening, and curling your hair with ease. Please read this manual carefully before use to ensure safe and optimal performance.

2. SAFETY INFORMATION

To reduce the risk of electric shock, burns, fire, or injury to persons, always follow basic safety precautions when using electrical appliances.

- Do not use this appliance near water, such as in a bathtub, shower, or sink.
- Always unplug the appliance immediately after use.
- Do not reach for an appliance that has fallen into water; unplug it immediately.
- Keep the cord away from heated surfaces.
- Never block the air openings of the appliance or place it on a soft surface, such as a bed or couch, where the air openings may be blocked.
- Do not use outdoors or operate where aerosol (spray) products are being used or where oxygen is being administered.
- Always wear heat-resistant gloves when changing detachable brush heads to prevent burns.
- This appliance is not intended for use by persons (including children) with reduced physical, sensory or mental capabilities, or lack of experience and knowledge, unless they have been given supervision or instruction concerning use of the appliance by a person responsible for their safety.

3. PACKAGE CONTENTS

Your Atopskins 6-in-1 Hair Styler package includes the following items:

- 1 x Main Hair Styler Unit
- 1 x Hot Air Blowout Brush Attachment
- 2 x Air Curling Iron Attachments (Left and Right)
- 1 x Round Brush Attachment
- 1 x Hair Dryer Nozzle Attachment
- 1 x Hair Straightener Brush Attachment



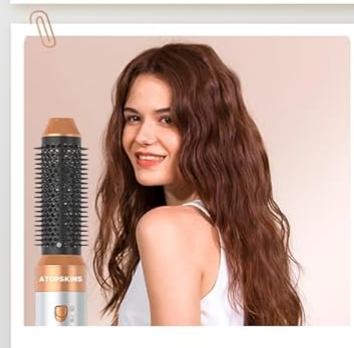
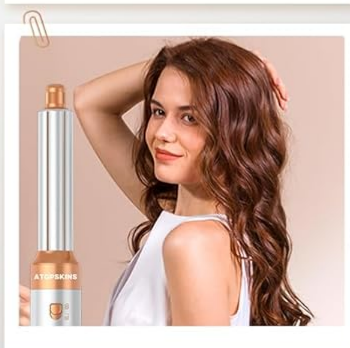
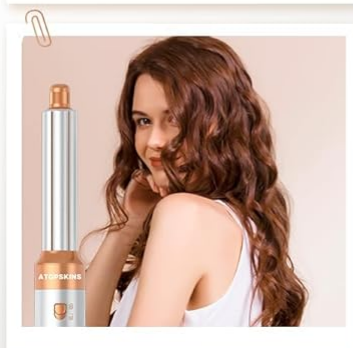
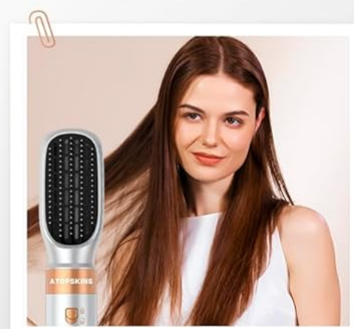
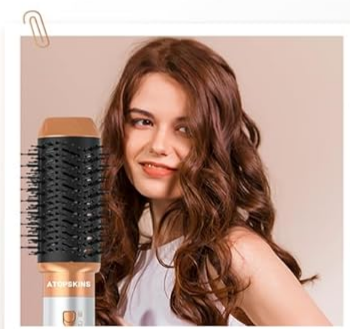
This image displays the Atopskins 6-in-1 Hair Styler main unit along with its six interchangeable attachments: two air curling wands, a large oval brush, a round brush, a hair dryer nozzle, and a hair straightening brush.

4. PRODUCT OVERVIEW AND COMPONENTS

The Atopskins Hair Styler features a main unit with a powerful motor and a selection of interchangeable heads for various styling needs.

6-in-1 Blowout Brush

Dryer Volumizer Smooth Straightener

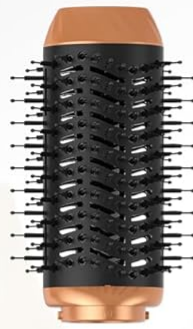


An overview of the Atopskins 6-in-1 Hair Styler system, showcasing the main handle and the six distinct attachments designed for drying, volumizing, smoothing, and straightening hair.

Key Attachments:

- **Air Curling Wands:** Utilizes the Coanda effect to automatically wrap and curl hair without extreme heat. Available for both left and right-facing curls.
- **Hot Air Blowout Brush:** Combines drying and styling, ideal for adding volume and shape.
- **Round Brush:** Creates fluffy effects and natural waves, especially at hair ends.
- **Hair Dryer Nozzle:** For quick drying and preparing hair for styling.
- **Hair Straightener Brush:** Features soft spherical comb teeth for smooth hair and gentle scalp massage.

Detachable accessories

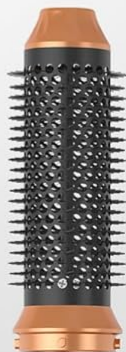


Big Oval Brush

Create a fluffy effect.
And create fluffy natural
waves at the end of the hair.

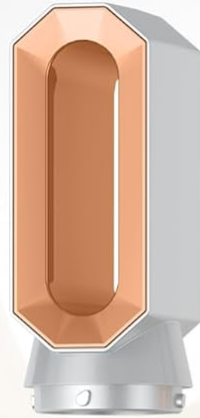
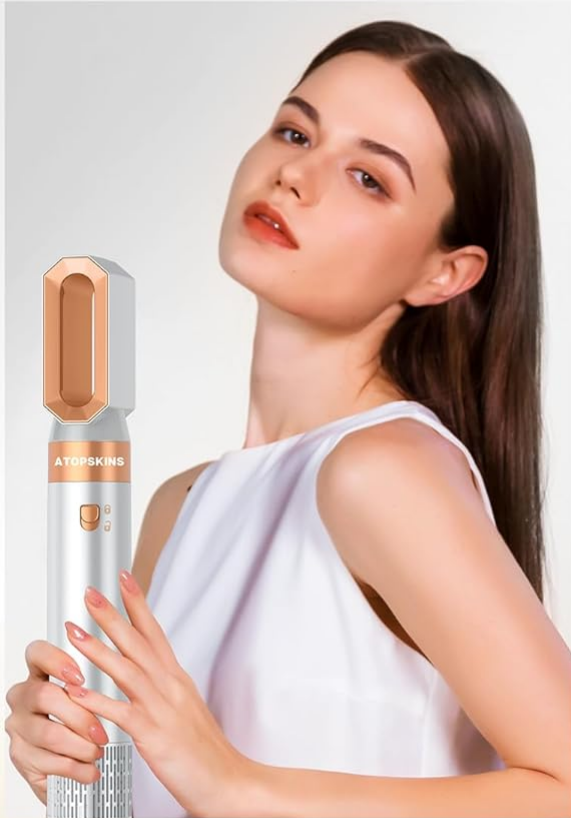
Big Oval Brush

Create a fluffy effect.
And create fluffy natural
waves at the end of the hair.



A close-up view of the Big Oval Brush attachment, designed to create a fluffy effect and natural waves at the ends of the hair. It features a combination of bristles for effective styling.

Detachable accessories

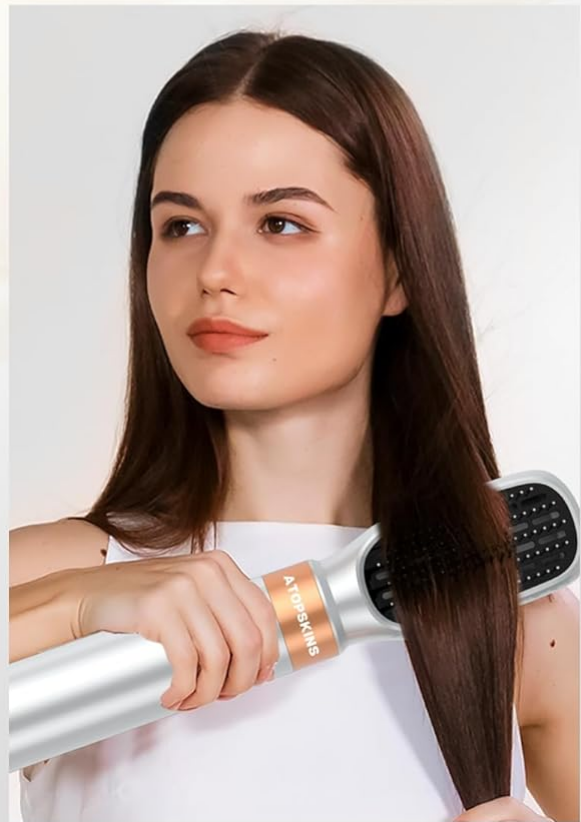


Hair Dryer

Dry hair quickly and prepare for styling.

Hair Straightener Brush

Create smooth hair effect, soft spherical comb teeth, designed for gentle massage of the scalp



This image highlights two key attachments: the Hair Dryer nozzle, used for quickly drying hair and preparing it for styling, and the Hair Straightener Brush, featuring soft spherical comb teeth for a smooth hair effect and gentle scalp massage.

5. SETUP AND OPERATION

5.1 Attaching and Detaching Heads

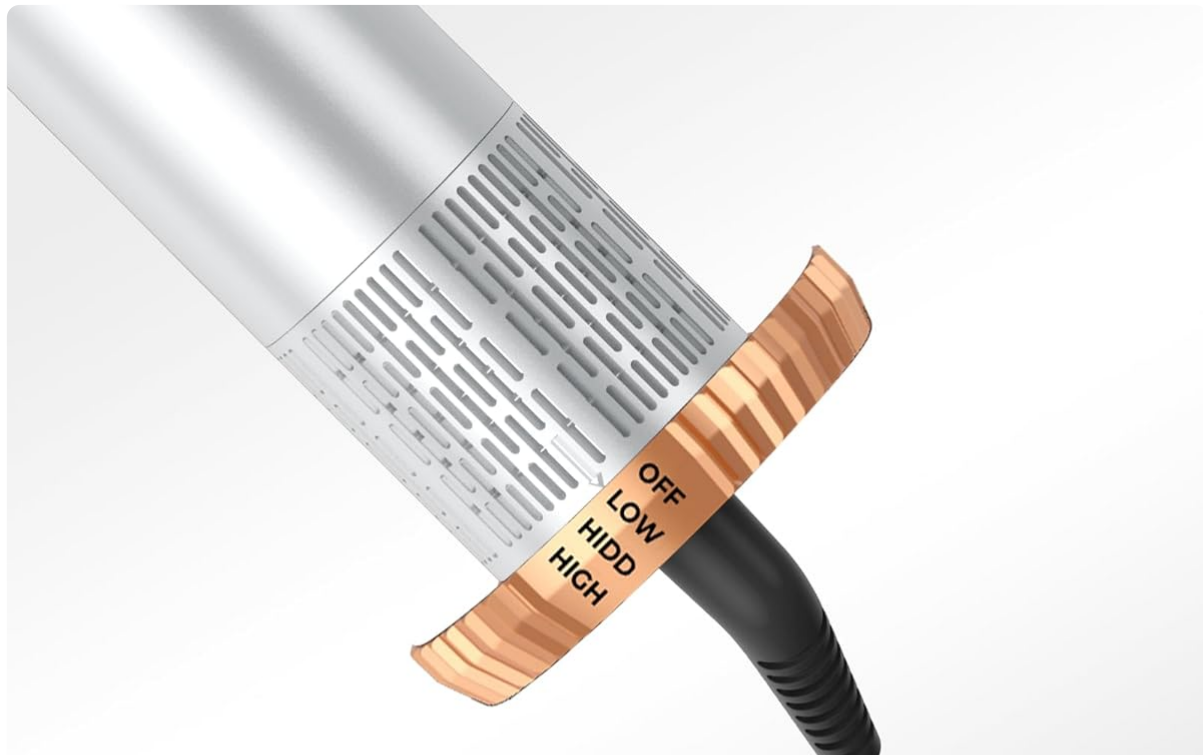
1. Ensure the main unit is unplugged and cool before attaching or detaching any heads.
2. Align the desired attachment with the main unit's connection point.
3. Twist or push the attachment firmly until it clicks into place, indicating a secure connection.
4. To detach, press the release button (if present) or twist in the opposite direction and pull the

attachment off. Always wear heat-resistant gloves if the unit has been recently used and is still warm.

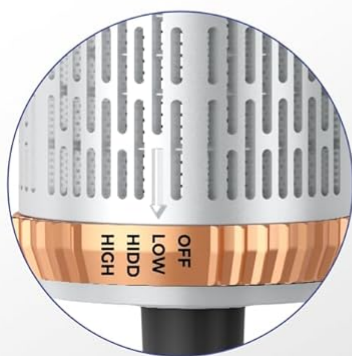
5.2 Temperature Settings

The Atopskins Hair Styler offers three temperature settings to suit different hair types and styling needs:

- **Setting 1 (Low Temperature):** Approximately 50°C with high wind speed. Ideal for dry or fine hair, suitable for summer use.
- **Setting 2 (Medium Temperature):** Approximately 80°C with high wind speed. Suitable for semi-dry or normal hair, perfect for styling.
- **Setting 3 (High Temperature):** Approximately 105°C with high wind speed. Recommended for wet, thick, or curly hair, designed for quick drying in winter.



3 HEATING LEVELS



LOW TEMPERATURE

50°C

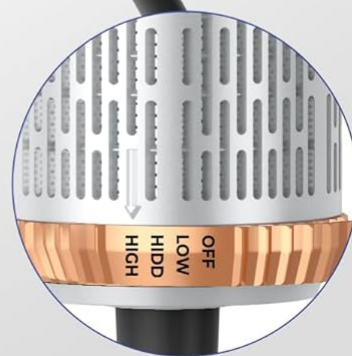
☀️ Cool Airflow



MEDIUM TEMPERATURE

80°C

🌀 Low Airflow



HIGH TEMPERATURE

105°C

🌀🌀 Strong Airflow

An illustration detailing the three temperature settings of the Atopskins Hair Styler: Low Temperature (50°C with cool

airflow), Medium Temperature (80°C with low airflow), and High Temperature (105°C with strong airflow), catering to different hair types and styling needs.

5.3 Styling Tips

Follow these tips for best results and to help your styling last longer:

1. **Prepare Hair:** Towel dry your hair before using the styler. Apply your preferred hair care product.
2. **Pre-Dry:** For optimal styling, dry your wet hair with the Hair Dryer Nozzle until it is 80-90% dry. This makes styling easier and helps it last longer.
3. **Styling with Attachments:** Choose your preferred attachment (e.g., Auto-Wrap curling irons or hot air brush). Select a high speed and high heat setting. Curl and hold in place until dry, then set with a cold shot for 5-10 seconds. Slowly release the curl.
4. **Finish:** We recommend using mousse or styling spray to help your hairstyle last longer.

Tips To Help Keep The Styling Longer



1

Towel your hair before using this machine, and apply your favorite hair care product.



2

Then dry your wet hair with a strong hair dryer until it is 80%-90% dry.

Easier to style, and keep long-lasting



3

Style with Auto-Wrap curling irons or hot air brush accessories to your preference. Choose high speed, high heat, curl and hold in place until dry, then set with cold shot for 5-10 seconds, slowly release curl.



4

We recommend using mousse or styling spray to keep your hairstyle last longer.



A visual guide providing tips to help styling last longer, including towel-drying hair, pre-drying to 80-90%, using the auto-wrap curling irons with cold shot, and applying styling products like mousse or spray.

6. MAINTENANCE AND CLEANING

Proper maintenance ensures the longevity and performance of your Atopskins Hair Styler.

- **Unplug Before Cleaning:** Always ensure the appliance is unplugged from the power outlet and completely cool before cleaning.
- **Clean Attachments:** Remove any hair or debris from the brush heads after each use. You can use a small brush or comb to gently remove tangled hair.
- **Wipe Down:** Wipe the main unit and attachments with a soft, damp cloth. Do not use abrasive cleaners or solvents.
- **Do Not Immerse:** Never immerse the main unit or any electrical components in water or any other liquid.
- **Storage:** Store the styler and its attachments in a dry, cool place, away from direct sunlight and moisture.

7. TROUBLESHOOTING

If you encounter any issues with your Atopskins Hair Styler, please refer to the following common problems and solutions:

Problem	Possible Cause	Solution
Device does not turn on.	Not plugged in; power outlet issue; faulty cord.	Ensure the power cord is securely plugged into a working outlet. Check the power switch.
No airflow or weak airflow.	Air intake/outlet blocked; motor issue.	Check for any obstructions in the air intake or outlet. Ensure the attachment is correctly secured.
Attachments are difficult to change.	Incorrect alignment; unit is hot.	Ensure the attachment is aligned correctly before twisting. Allow the unit to cool down completely before changing attachments.
Hair not curling/straightening effectively.	Incorrect technique; hair too wet/dry; wrong temperature setting.	Refer to the "Styling Tips" section. Ensure hair is 80-90% dry for curling. Adjust temperature setting as needed.

If the problem persists after trying these solutions, please contact customer support.

8. SPECIFICATIONS

- **Model:** ATDE-632-White-SJ10

- **Brand:** Atopskins
- **Color:** Grey-white
- **Power:** 1000W
- **Product Dimensions (L x W x H):** 32 x 22 x 8 cm (12.6 x 8.7 x 3.1 inches)
- **Item Weight:** 1.13 kilograms (2.49 lbs)
- **Temperature Settings:** 3 levels (Low: 50°C, Medium: 80°C, High: 105°C)
- **Airflow:** 360° Airflow Vent

9. WARRANTY AND SUPPORT

For warranty information or technical support, please contact the seller or manufacturer directly through the platform where the product was purchased. Please retain your proof of purchase for any warranty claims.

Manufacturer: Atopskins