

VivaEase R281S-G

VivaEase IPL Hair Removal Device User Manual

Model: R281S-G

INTRODUCTION

Thank you for choosing the VivaEase IPL Hair Removal Device. This manual provides essential information for the safe and effective use of your device. Please read it thoroughly before first use and retain it for future reference.

The VivaEase IPL Hair Removal Device utilizes advanced Intense Pulsed Light (IPL) technology with an upgraded Ice Cooling feature to provide a comfortable and effective solution for reducing unwanted hair growth. Designed for home use, it offers a convenient alternative to traditional hair removal methods.

IMPORTANT SAFETY INFORMATION

WARNING: Read all safety warnings and instructions. Failure to follow the warnings and instructions may result in electric shock, fire, or serious injury.

- This device is not suitable for all skin tones and hair colors. IPL works primarily on melanin in the hair follicle. It is **not effective** on red, light blonde, white, and gray hair. It is also **not suitable** for dark brown, black, and other dark skin tones. Refer to the skin tone chart below before use.
- Always wear the provided protective goggles during operation to protect your eyes from the intense pulsed light.
- Do not use the device on tattooed areas, moles, birthmarks, or areas with skin disorders.
- Keep the device dry. Do not use it in or near water.
- Keep out of reach of children.

- Consult a physician before use if you have any pre-existing medical conditions or are taking medications that may increase skin sensitivity.
- Perform a patch test on a small area of skin 24 hours before full treatment to check for adverse reactions.

Check if this Device is Right for you?



Figure 1: Skin Tone and Hair Color Compatibility Chart. This chart illustrates which skin tones and hair colors are safe and suitable for IPL treatment, and which are not. IPL is most effective on darker hair colors and lighter skin tones.

PACKAGE CONTENTS

Please check the package for the following items:

- 1 x VivaEase IPL Hair Removal Device
- 1 x Power Adapter
- 1 x Protective Goggles
- 1 x Razor
- 1 x User Manual (this document)



Figure 2: Contents of the VivaEase IPL Hair Removal Device package, including the device, protective goggles, and razor.

PRODUCT OVERVIEW

The VivaEase IPL Hair Removal Device features a sleek design with intuitive controls. Key components include:

- **Light Outlet Window:** Where the IPL flashes are emitted.

- **Control Panel/Display:** Shows energy level, mode, and remaining flashes.
- **Power Button/Energy Level Knob:** Used to turn on/off and adjust energy.
- **Flash Button:** Triggers a single flash in manual mode.
- **Cooling Surface:** Integrated ice cooling technology for comfort.

MAX21J, 9levels, 999900flashes

ice cooling & painles



Figure 3: Overview of the device's features, including Ice Cooling, 9 Energy Levels, 999,900 Flashes, 600 NM Red Light Wave, 21J Maximum Energy, and Auto & Manual Mode.

Ice Cooling Hair Removal

Cooling sensation on the skin, reducing pain sensation.



Figure 4: Illustration demonstrating the benefit of the Ice Cooling Technology, which maintains skin temperature at 40°F-50°F (5°C) to prevent thermal damage and provide a painless experience, compared to devices without cooling that can reach 60°F-100°F.

SETUP

1. **Prepare the Skin:** Before treatment, ensure the target area is clean, dry, and shaved. Do not wax or pluck hair, as IPL targets the hair follicle.

2. **Connect Power:** Plug the power adapter into the device and then into a power outlet.
3. **Wear Goggles:** Always put on the protective goggles before turning on the device to shield your eyes from the intense light.

Your browser does not support the video tag.

Video 1: Demonstrates how to connect the power cable, turn on the device by long-pressing the power button, adjust the energy level using the knob, and switch between manual and automatic modes by long-pressing the flash button. It also shows the device being used in manual mode on the armpit and auto mode on the leg.

OPERATING INSTRUCTIONS

1. Power On/Off and Energy Level Adjustment

1. **Power On:** Long press the power button (usually integrated with the energy level knob) for 2-3 seconds until the display lights up.
2. **Adjust Energy Level:** Rotate the knob to select an energy level from 1 to 9. For first-time users, start with Level 1 and gradually increase based on comfort and skin reaction.
3. **Power Off:** Long press the power button again for 2-3 seconds to turn off the device.

2. Mode Selection (Manual vs. Auto)

The device offers two modes for different treatment areas:

- **Manual Mode:** Ideal for precise hair removal in small or sensitive areas like the bikini line, upper lip, or underarms. To activate, short press the flash button. The device will emit a single flash when the light outlet is pressed against the skin.
- **Auto Mode:** Suitable for larger skin areas such as the back, legs, chest, or arms, providing continuous flashing for faster treatment. To activate, long press the flash button. The device will automatically flash when the light outlet is placed firmly against the skin.



Figure 5: Demonstrates the application areas for Manual Mode (Upper Lip, Bikini Line, Armpit, Face) and Auto Mode (Chest, Arms, Legs, Back).

3. Application Steps

1. Ensure the skin is clean, dry, and shaved.
2. Select the appropriate energy level and mode.
3. Place the light outlet window firmly against the skin. The device body will light up blue when properly positioned, indicating it's ready for use.
4. For Manual Mode, press the flash button to emit a flash. For Auto Mode, simply glide the device slowly over the skin, ensuring continuous contact.

5. Move the device to the next area, ensuring slight overlap to cover all desired areas.

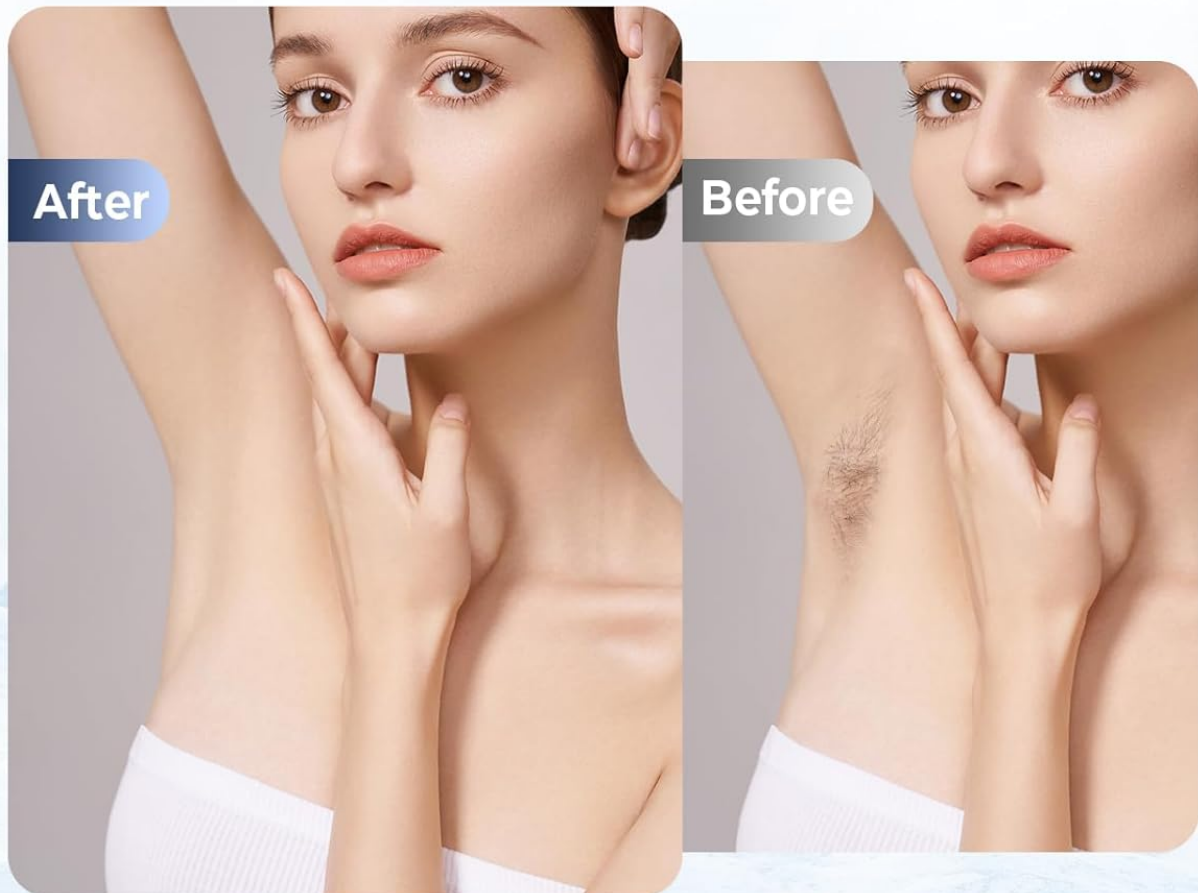
4. Treatment Schedule

Consistent use is key for optimal results. A typical treatment schedule is:

- **Weeks 1-4:** 2-3 times a week. During this phase, hair growth will be inhibited.
- **Weeks 5-8:** 1-2 times a week. You will notice deep hair removal and finer, slower regrowth.
- **After 8 Weeks:** 1-2 times a month, or as needed, to maintain smooth skin.

Remove Hair Roots In 8 Weeks

Visible results in **4** weeks.



1-4 WEEKS

2-3 times a week
Inhibited hair growth



5-8 WEEKS

1-2 times a week
Deep hair removal



AFTER 8 WEEKS

1-2 times a month
Smooth Skin

Figure 6: Visual representation of hair reduction over time with consistent IPL treatment, showing inhibited growth in 1-4 weeks, deep hair removal in 5-8 weeks, and smooth skin after 8 weeks.

8 Mins From Head to Toe

Fast and effective Painless Hair Removal



Figure 7: Approximate treatment times for various body parts: Face (1 min), Underarms (2 mins), Arms (4 mins), Bikini Zone (2 mins), Legs (8 mins), Back (8 mins).

600-1200nm Long Light Wave

Reach the root of hair follicles and remove them, effectively removing hair.

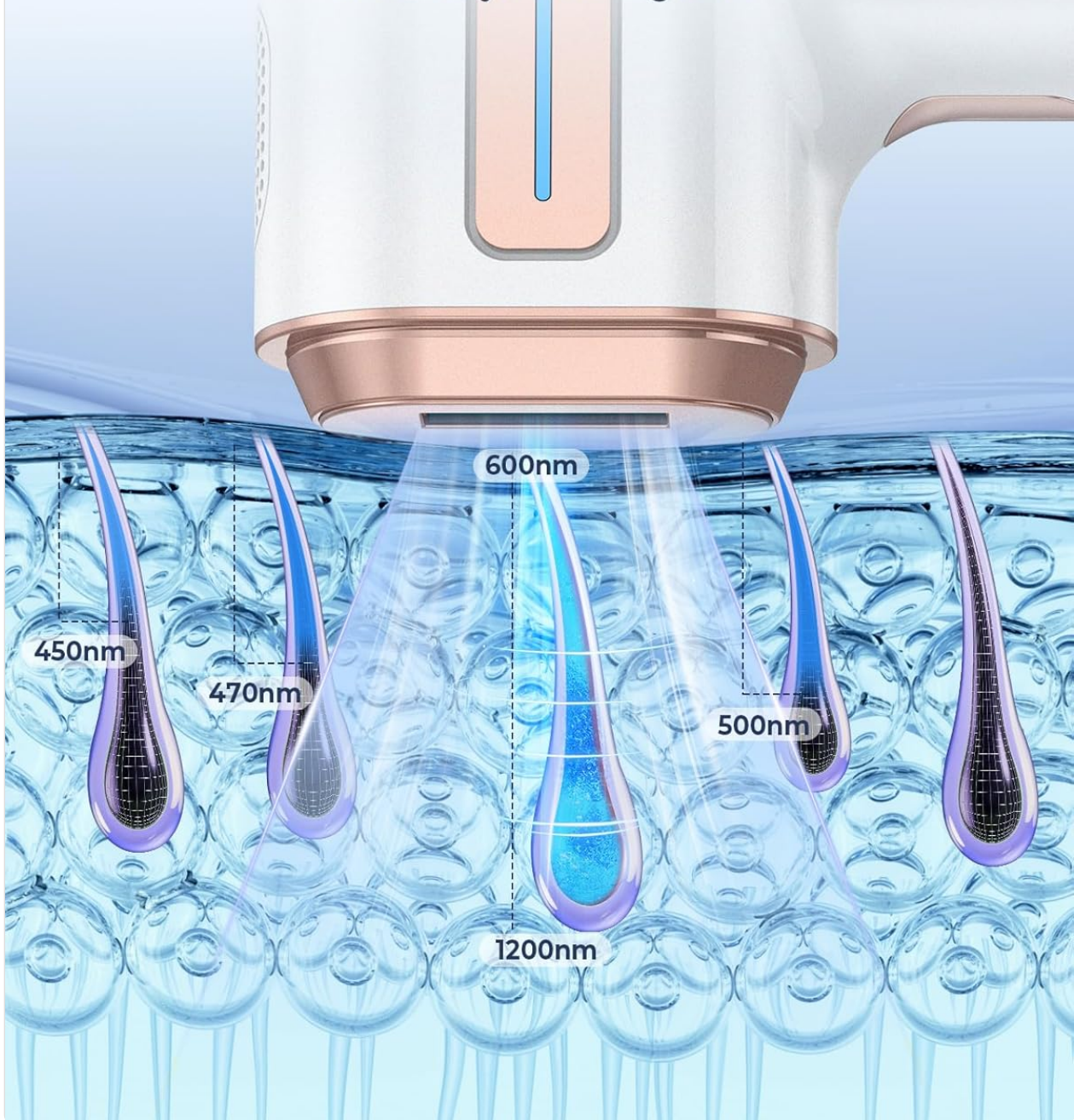


Figure 8: Illustration of the 600-1200nm long light wave reaching the root of hair follicles to effectively remove hair.

MAINTENANCE

- **Cleaning:** After each use, ensure the device is powered off and unplugged. Use a soft, dry cloth to wipe the light outlet window and the device body. Do not use abrasive cleaners or immerse the device in water.
- **Storage:** Store the device in a cool, dry place, away from direct sunlight and moisture. Keep it in its

original packaging or a protective case to prevent damage.

TROUBLESHOOTING

Problem	Possible Cause	Solution
Device does not turn on.	Not properly plugged in; Power button not long-pressed.	Ensure the power adapter is securely connected. Long press the power button for 2-3 seconds.
Device does not flash.	Light outlet not fully in contact with skin; Incorrect mode selected; Device malfunction.	Ensure the light outlet window is pressed firmly and flat against the skin. Check if the blue indicator light is on. Verify you are in the correct mode (Manual: press flash button; Auto: glide). If issues persist, contact customer support.
Skin irritation or discomfort.	Energy level too high; Not suitable for your skin tone/hair color; Improper use.	Reduce the energy level. Re-check the skin tone compatibility chart. Ensure skin is clean and shaved. If irritation continues, discontinue use and consult a dermatologist.
No visible hair reduction after several sessions.	Inconsistent use; Hair/skin type not suitable; Energy level too low.	Follow the recommended treatment schedule consistently. Confirm your skin tone and hair color are suitable for IPL. Gradually increase the energy level if comfortable.

SPECIFICATIONS

- **Technology:** Intense Pulsed Light (IPL) with Ice Cooling
- **Energy Levels:** 9 adjustable levels (up to 24J per pulse burst)
- **Flashes:** 999,999 flashes (approx.)
- **Light Wave:** 600-1200nm
- **Cooling Temperature:** As low as 5°C (41°F)
- **Modes:** Manual (single flash) and Auto (continuous flash)
- **Product Dimensions:** 10.24 x 8.66 x 2.76 inches
- **Weight:** 1.76 Pounds
- **Power Input:** (Not specified in JSON, assume standard household)

WARRANTY AND SUPPORT

VivaEase products are manufactured to the highest quality standards. For specific warranty details, please refer to the warranty card included with your product or contact VivaEase customer support.

If you encounter any issues or have questions regarding your VivaEase IPL Hair Removal Device, please contact our customer support team through the official VivaEase store on Amazon or via the contact information provided on the product packaging.

Online Support: Visit the [VivaEase Store on Amazon](#).

© 2025 VivaEase. All rights reserved.
For support, please visit [VivaEase Store](#).