

## Xiaomi 59276

# Xiaomi TV S Mini LED 55" 2025 User Manual

## INTRODUCTION

Welcome to the user manual for your new Xiaomi TV S Mini LED 55" 2025. This manual provides essential information for setting up, operating, maintaining, and troubleshooting your television. Please read this manual thoroughly before using the product to ensure safe and optimal performance.

## IMPORTANT SAFETY INFORMATION

Always follow basic safety precautions when using this product to reduce the risk of fire, electric shock, and injury.

- **Power Source:** Ensure the TV is connected to a power supply within the specified voltage range.
- **Ventilation:** Do not block ventilation openings. Allow adequate space around the TV for proper airflow.
- **Water and Moisture:** Do not expose the TV to rain or moisture. Do not place objects filled with liquids, such as vases, on the TV.
- **Cleaning:** Unplug the TV from the power outlet before cleaning. Use a soft, dry cloth. Do not use liquid cleaners or aerosol cleaners.
- **Placement:** Place the TV on a stable, level surface. Avoid placing it in direct sunlight or near heat sources.
- **Servicing:** Do not attempt to service this product yourself. Refer all servicing to qualified service personnel.

## PACKAGE CONTENTS

Please check the box for the following items:

- Xiaomi TV S Mini LED 55" 2025 Television Unit
- Remote Control
- Power Cable
- User Manual (this document)

### 1. Unpacking and Stand Installation

Carefully remove the TV from its packaging. Place the TV screen-down on a soft, flat surface to prevent damage. Attach the stand bases to the TV using the provided screws, ensuring they are securely fastened.



Image: Front view of the Xiaomi TV S Mini LED 55" 2025, showcasing its slim bezels and stand design.



Image: Side profile of the Xiaomi TV S Mini LED 55" 2025, emphasizing its ultra slim-bezel design.

## 2. Connecting Peripherals

Connect your power cable to the TV and a wall outlet. Connect any external devices such as gaming consoles, soundbars, or set-top boxes to the appropriate HDMI or other input ports on the TV.

## 3. Initial Power-On and Network Setup

Press the power button on the remote control. Follow the on-screen instructions to select your language, region, and connect to your Wi-Fi network. This TV features Google TV, which will guide you through the initial setup process, including signing into your Google account for access to apps and services.

## OPERATING YOUR XIAOMI TV

---

### Basic Operation

- **Power On/Off:** Press the power button on the remote control to turn the TV on or off.
- **Input Selection:** Use the "Input" button on the remote to switch between connected devices (HDMI 1,

HDMI 2, etc.).

- **Navigation:** Use the directional pad and "OK" button on the remote to navigate menus and select options.

## Smart TV Features (Google TV)

Your Xiaomi TV comes with Google TV, offering a personalized entertainment experience. You can browse movies, shows, and apps from various streaming services, get curated recommendations, and use Google's powerful search to find content.



Image: The Google TV interface on the Xiaomi TV, displaying popular streaming applications and content recommendations.

## Display and Audio Settings

Access the TV settings menu to adjust picture modes, sound profiles, and other advanced display options. Your TV features a Bright 4K QD-MiniLED display with accurate color reproduction.





Image: Visual representation of the Mini LED technology, highlighting 308 dimming zones and ambient light adjustment capabilities for enhanced picture quality.

## High Refresh Rate and MEMC

The 144Hz refresh rate provides a smooth viewing experience, especially for fast-paced content like sports and gaming. The 4K 120Hz MEMC (Motion Estimation, Motion Compensation) technology further reduces motion blur and stuttering.



Image: Demonstration of 4K 120Hz MEMC technology, showing how it delivers stutter-free images during high-speed scenes.

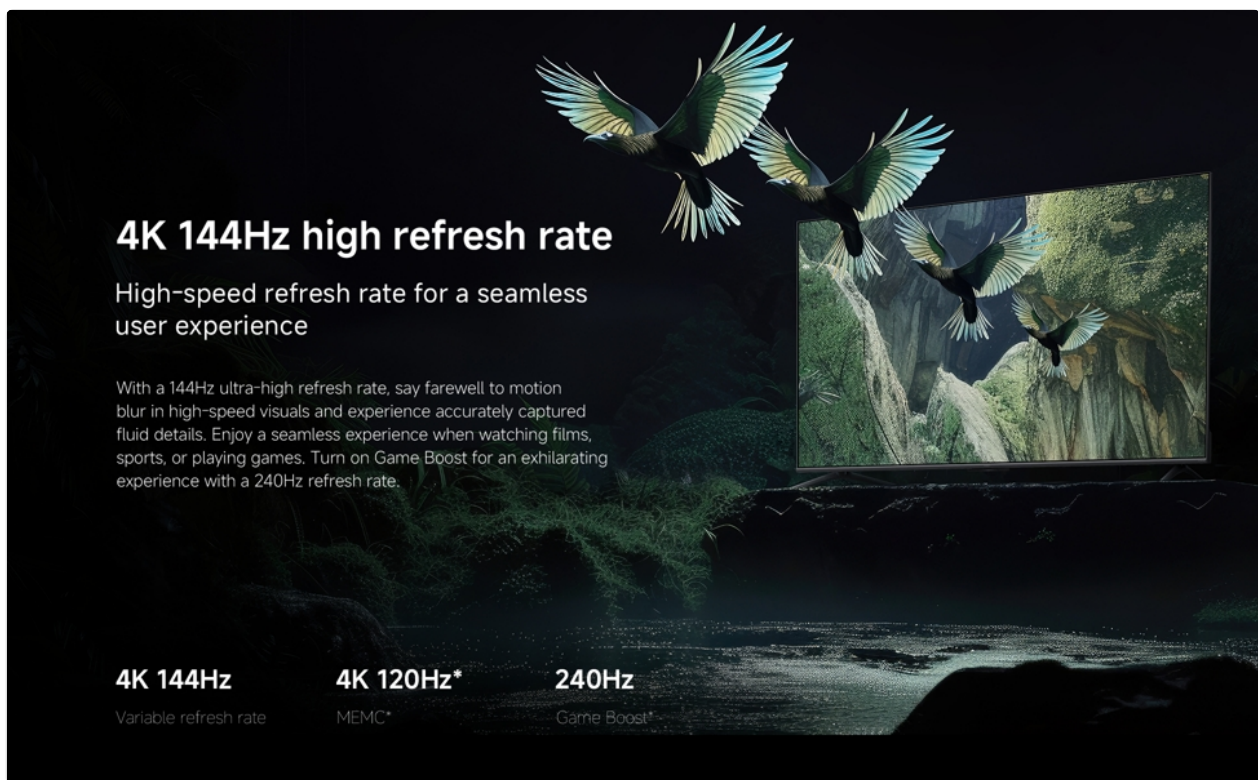


Image: Explanation of the 4K 144Hz high refresh rate, including variable refresh rate, 4K 120Hz MEMC, and 240Hz Game Boost for a seamless user experience.

## Connectivity

The TV supports Bluetooth connectivity for wireless audio devices and Apple AirPlay for streaming content directly from your Apple devices.

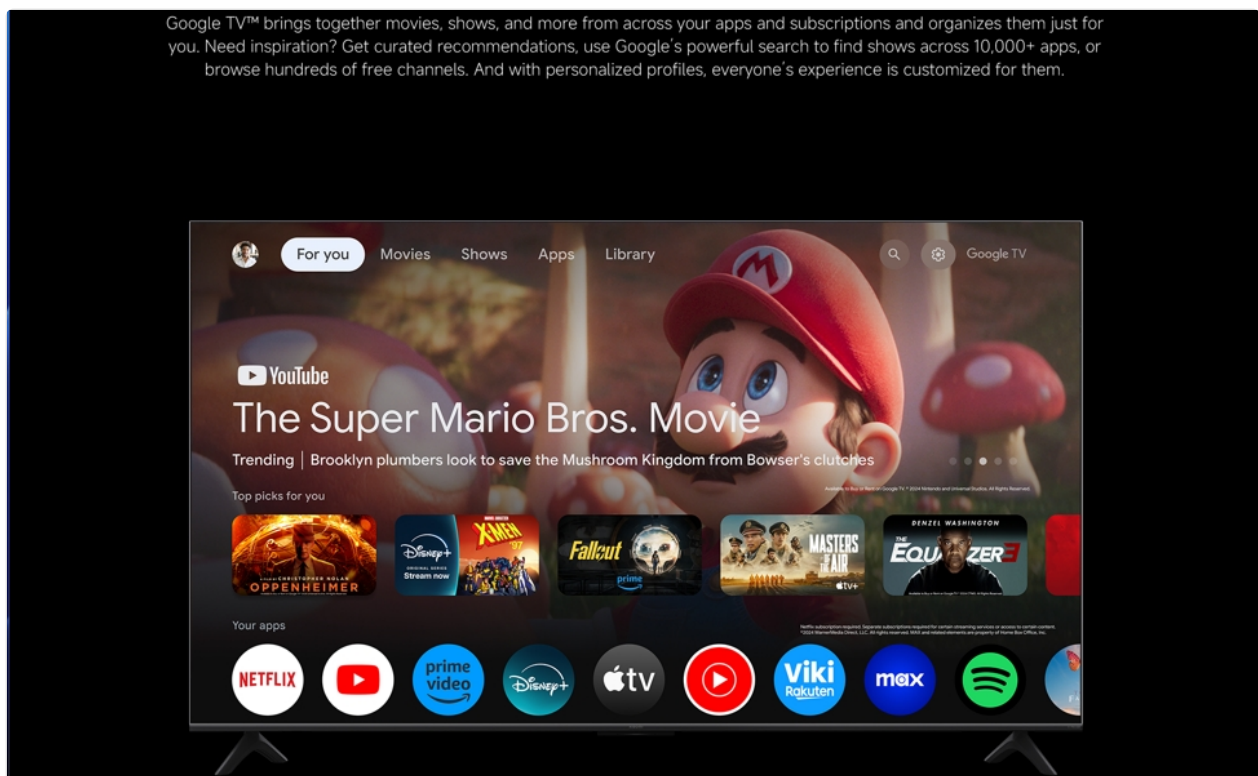


Image: Illustration of Apple AirPlay functionality, allowing users to stream content from their iPhone, iPad, or Mac to the Xiaomi TV.

## MAINTENANCE AND CARE

Proper maintenance ensures the longevity of your Xiaomi TV.

- **Screen Cleaning:** Gently wipe the screen with a soft, lint-free cloth. For stubborn marks, slightly dampen the cloth with water or a specialized screen cleaner (ensure it's safe for TV screens). Never spray liquid directly onto the screen.
- **Cabinet Cleaning:** Use a soft, dry cloth to clean the TV cabinet.
- **Dusting:** Regularly dust the ventilation slots to prevent overheating.
- **Power Cord:** Inspect the power cord periodically for any damage.

## TROUBLESHOOTING

If you encounter issues with your TV, refer to the following common problems and solutions:

Problem	Possible Cause	Solution
No Power	Power cable not connected; Power outlet not working; TV in standby mode.	Ensure power cable is securely plugged in. Test the outlet with another device. Press the power button on the remote or TV.
No Picture, But Sound is Present	Incorrect input source selected; External device not powered on or connected properly.	Press the "Input" button to select the correct source. Check connections and power of external devices.
Poor Picture Quality	Low-resolution source; Picture settings incorrect; Cable issues.	Ensure source content is high-resolution. Adjust picture settings (brightness, contrast, sharpness). Check HDMI/other cables for damage.
Remote Control Not Working	Batteries are dead or incorrectly inserted; Obstruction between remote and TV.	Replace batteries (note: remote doesn't have batteries included initially). Remove any obstructions. Ensure remote is pointed at the TV's sensor.
Smart TV Features Not Working / Slow	Network connectivity issues; Insufficient memory.	Check Wi-Fi connection. Restart the TV and router. Clear TV memory/cache if available in settings.

If the problem persists after trying these solutions, please contact Xiaomi customer support.

## SPECIFICATIONS

Feature	Detail
Model Name	Xiaomi TV S Mini LED 55" 2025
Item Model Number	59276
Screen Size	55 Inches (140 cm diagonal)
Display Technology	4K UHD, Mini LED
Resolution	4K (3840 x 2160)

Feature	Detail
Refresh Rate	144Hz
Product Dimensions (D x W x H)	31.3D x 122.6W x 76.8H centimeters
Weight	14.5 kg
Connectivity Technology	Bluetooth, Wi-Fi
Supported Internet Services	Netflix, Hulu, Amazon Prime Video, Google TV ecosystem
Manufacturer	Xiaomi
Country of Origin	China


## WARRANTY AND SUPPORT

Your Xiaomi TV S Mini LED 55" 2025 comes with a manufacturer's warranty. Please refer to the warranty card included in your package for specific terms and conditions.

For technical support, troubleshooting assistance, or service inquiries, please visit the official Xiaomi support website or contact their customer service hotline. Keep your purchase receipt and product serial number handy for faster service.

Official Xiaomi Store: [Xiaomi Store on Amazon.ae](#)

## Related Documents - 59276

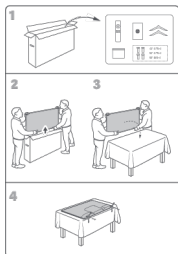


[Xiaomi TV Max řada 2025: 100" 4K Smart TV s Quantum Dot a 144Hz](#)

Objevte Xiaomi TV Max řada 2025, prémiový 100palcový 4K televizor s Quantum Dot displejem, 144Hz obnovovací frekvencí, Dolby Vision/Atmos a Google TV. Získejte kinematografický zážitek za dostupnou cenu.







[Xiaomi TV A Pro 43/50/55 EU: Návod na použitie a bezpečnostné pokyny](#)

Kompletný návod na použitie a bezpečnostné pokyny pre televízory Xiaomi TV A Pro 43, 50 a 55 palcov (EU verzia). Obsahuje informácie o inštalácii, bezpečnosti, pripojení a technické špecifikácie.