

YX31

Generic YX31 Open Ear Clip Wireless Earbuds User Manual

Model: YX31 | Brand: Generic

INTRODUCTION

This manual provides comprehensive instructions for the safe and efficient use of your Generic YX31 Open Ear Clip Wireless Earbuds. Please read this manual thoroughly before using the product and retain it for future reference.

PRODUCT OVERVIEW

The Generic YX31 earbuds are designed for comfort and performance, featuring an open-ear clip design, Bluetooth 5.4 connectivity, and ENC noise reduction for clear audio and calls. They are suitable for various activities, including sports, and offer a long battery life.

Key Features:

- **Open Ear Clip Design:** Allows awareness of surroundings while listening.
- **Bluetooth 5.4:** Ensures stable and low-latency wireless connection up to 15 meters.
- **ENC Noise Reduction:** Enhances call clarity by reducing ambient noise.
- **Smart Touch Controls:** Easy management of music, calls, and modes.
- **Waterproof Design:** Suitable for fitness and outdoor activities.
- **Long Battery Life:** Up to 26 hours of playback.

Low latency technology for synchronous enjoyment Watching movies freely



Image: The YX31 Open Ear Clip Wireless Earbuds shown inside their charging case.

SETUP

1. Initial Charging

Before first use, fully charge the earbuds and the charging case. Connect the provided Type-C charging cable to the charging port on the case and a suitable power source. The indicator lights on the case will show charging status.

2. Pairing with a Device

1. Ensure earbuds are charged.
2. Open the charging case lid. The earbuds will automatically enter pairing mode, indicated by flashing lights (usually blue or white).
3. On your device (smartphone, tablet, etc.), go to Bluetooth settings and turn Bluetooth on.
4. Search for available devices and select "YX31" from the list.
5. Once connected, the indicator lights on the earbuds will stop flashing, and your device will confirm the connection.

For subsequent use, simply open the charging case, and the earbuds will automatically reconnect to the last paired device if Bluetooth is enabled on that device.

Wearing the Earbuds

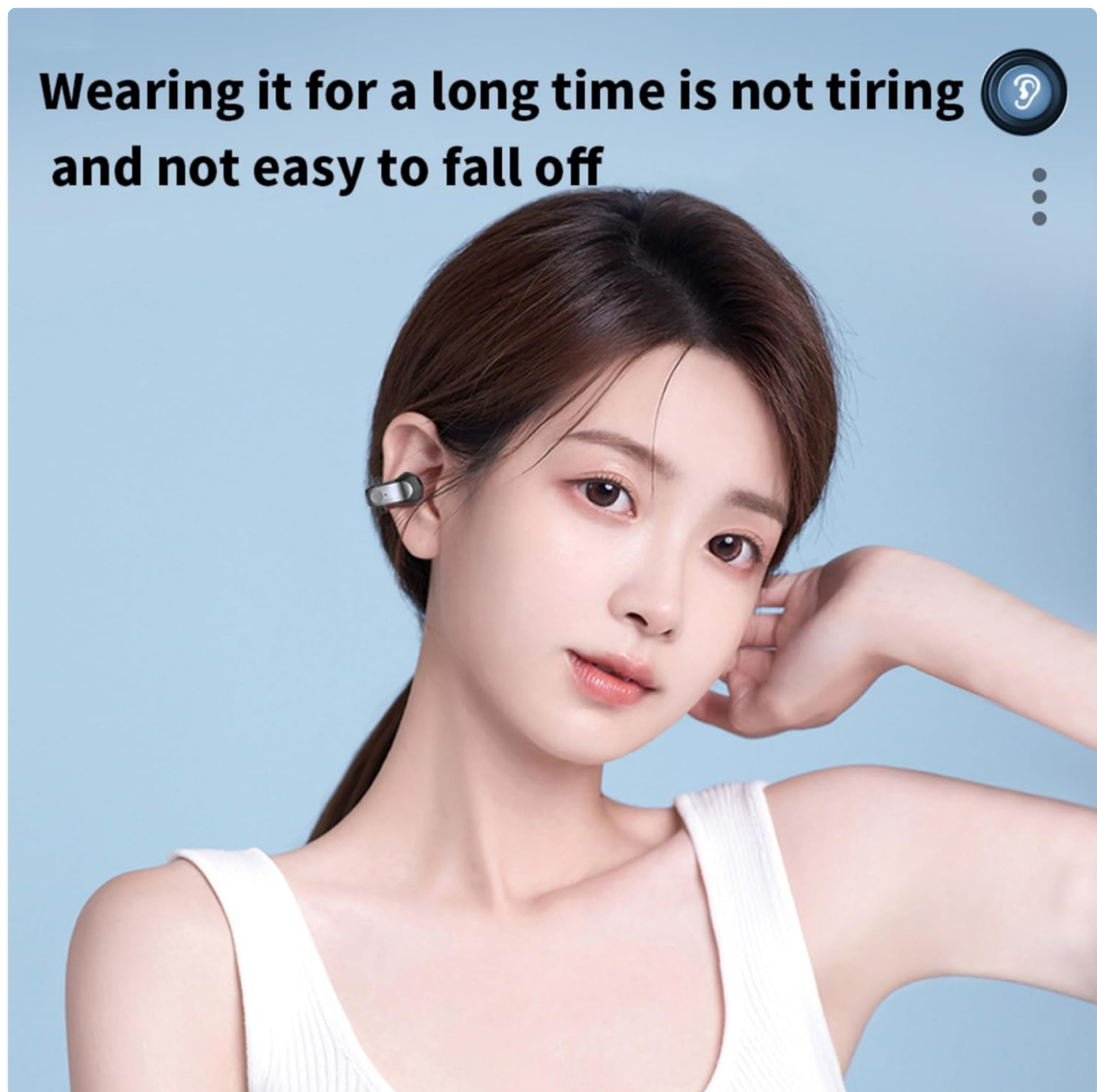


Image: A person wearing the YX31 Open Ear Clip Wireless Earbuds, demonstrating the secure and comfortable fit. Gently clip the earbuds onto your ears. The ergonomic design ensures a stable and comfortable fit, allowing you to wear them for extended periods without discomfort. Adjust the position for optimal sound and comfort.

Touch Controls

The YX31 earbuds feature smart touch controls on the outer surface of each earbud. Specific functions may vary slightly, but common controls include:

- **Play/Pause:** Single tap on either earbud.
- **Next Track:** Double tap on the right earbud.
- **Previous Track:** Double tap on the left earbud.
- **Answer/End Call:** Single tap on either earbud during an incoming call or active call.
- **Reject Call:** Press and hold either earbud for 2 seconds during an incoming call.
- **Activate Voice Assistant:** Triple tap on either earbud.
- **Volume Control:** (If supported) Long press left for volume down, long press right for volume up. Refer to your device's settings if direct earbud volume control is not responsive.

Just one finger touch to play
Start enjoying music



Image: The black YX31 earbuds in their charging case, highlighting the touch-sensitive surface for controls.

CHARGING

The YX31 earbuds and their charging case are powered by a built-in 400mAh battery, providing approximately 26 hours of total battery life with the charging case. The earbuds themselves offer several hours of playback on a single charge.

Charging the Earbuds:

Place the earbuds back into the charging case. They will automatically begin charging. The indicator lights on the earbuds will show their charging status.

Charging the Case:

Connect the Type-C charging cable to the charging port on the back of the case and to a USB power adapter (not included) or a computer USB port. The indicator light on the case will illuminate to show charging progress and turn solid when fully charged.

MAINTENANCE

- **Cleaning:** Use a soft, dry cloth to clean the earbuds and charging case. Do not use abrasive cleaners or

solvents.

- **Water Resistance:** The earbuds are waterproof, making them suitable for fitness. However, they are not designed for swimming or submersion in water. Ensure they are dry before placing them back in the charging case to prevent damage.
- **Storage:** Store the earbuds and case in a cool, dry place away from extreme temperatures and direct sunlight.
- **Battery Care:** To prolong battery life, avoid fully discharging the battery frequently. Charge regularly, even if not in use for extended periods.

TROUBLESHOOTING

Problem	Solution
Earbuds not pairing	Ensure earbuds are charged and out of the case. Turn off and on Bluetooth on your device. Forget "YX31" in your device's Bluetooth settings and try pairing again. Restart your device.
No sound or low volume	Check device volume and earbud volume. Ensure earbuds are properly connected to your device. Clean any debris from the earbud speakers.
Earbuds not charging	Ensure the charging cable is securely connected. Try a different charging cable or power source. Clean the charging contacts on both earbuds and the case.
Connection drops frequently	Ensure your device is within the 15-meter Bluetooth range. Avoid obstacles between the earbuds and your device. Minimize interference from other wireless devices.

SPECIFICATIONS

Feature	Detail
Model Name	YX31
Bluetooth Version	V5.4
Audio Code	SBC
Charging Voltage	5V
Battery Capacity (Case)	400mAh
Battery Life	Approx. 26 hours (with charging case)
Link Range	<15 meters
Frequency Response	20Hz-20KHz
Charging Interface	Type-C
Noise Control	Active Noise Cancellation (ENC)

Feature	Detail
Water Resistance Level	Waterproof
Control Method	Touch
Earpiece Shape	Clip-on
Material	Plastic, Silicone

WARRANTY AND SUPPORT

This product comes with a standard manufacturer's warranty. Please refer to the packaging or contact your retailer for specific warranty terms and conditions. For technical support or further assistance, please contact the seller or manufacturer through the platform where the product was purchased.