

Genérico EC33

Genérico EC33 4G+2G Vehicle Tracker User Manual

Model: EC33

1. INTRODUCTION

The Genérico EC33 is an advanced 4G+2G vehicle tracker designed for comprehensive vehicle monitoring and security. Featuring a Quectel chip, it offers reliable real-time location tracking, route history, and various alert functions to ensure the safety and efficient management of your vehicle. This manual provides detailed instructions for the installation, operation, and maintenance of your EC33 tracker.

2. KEY FEATURES

- **Real-time Location Tracking:** Monitor the exact position of your vehicle in real-time.
- **Route History:** View and store historical routes taken by the vehicle.
- **Geofencing:** Define specific geographical areas and receive alerts when the vehicle enters or exits these zones.
- **Speed Alerts:** Get notifications if the vehicle exceeds a predefined speed limit.
- **Fuel Monitoring:** Track fuel consumption and receive alerts for potential fuel theft.
- **Performance Reports:** Generate reports on vehicle usage, efficiency, and driver behavior.
- **SOS and Emergency Button:** Send an emergency signal in case of theft or accident.
- **Remote Shutdown:** Remotely disable the vehicle in case of theft.
- **Maintenance Monitoring:** Receive alerts for scheduled maintenance based on mileage.
- **Mobile App Integration:** Access tracking information via smartphone applications.
- **4G+2G Connectivity:** Ensures broad network compatibility and reliable data transmission.
- **Anti-Jammer:** Enhanced security against signal jamming attempts.

3. PACKAGE CONTENTS

Please check the package for the following items:

- Genérico EC33 Vehicle Tracker Unit
- Wiring Harness
- (Optional: SIM Card, if purchased with a plan)

- (Optional: User Manual - this document)

Note: Specific contents may vary based on the purchased package.

4. DEVICE OVERVIEW

Familiarize yourself with the components of your EC33 tracker.



Figure 1: Front view of the Genérico EC33 Vehicle Tracker. The device is dark gray with a QR code, "EC33", "FC CE", "4G+2G", "GNSS Vehicle Terminal", "Working Voltage 9-90V", and "Built-in 300mAh Battery" printed on it. A unique IMEI number, 869731051465854, is also visible.



Figure 2: Front view of the Genérico EC33 Vehicle Tracker with the cover removed, revealing the micro SIM card slot and Type-C data port. This image shows the internal components for SIM card insertion.

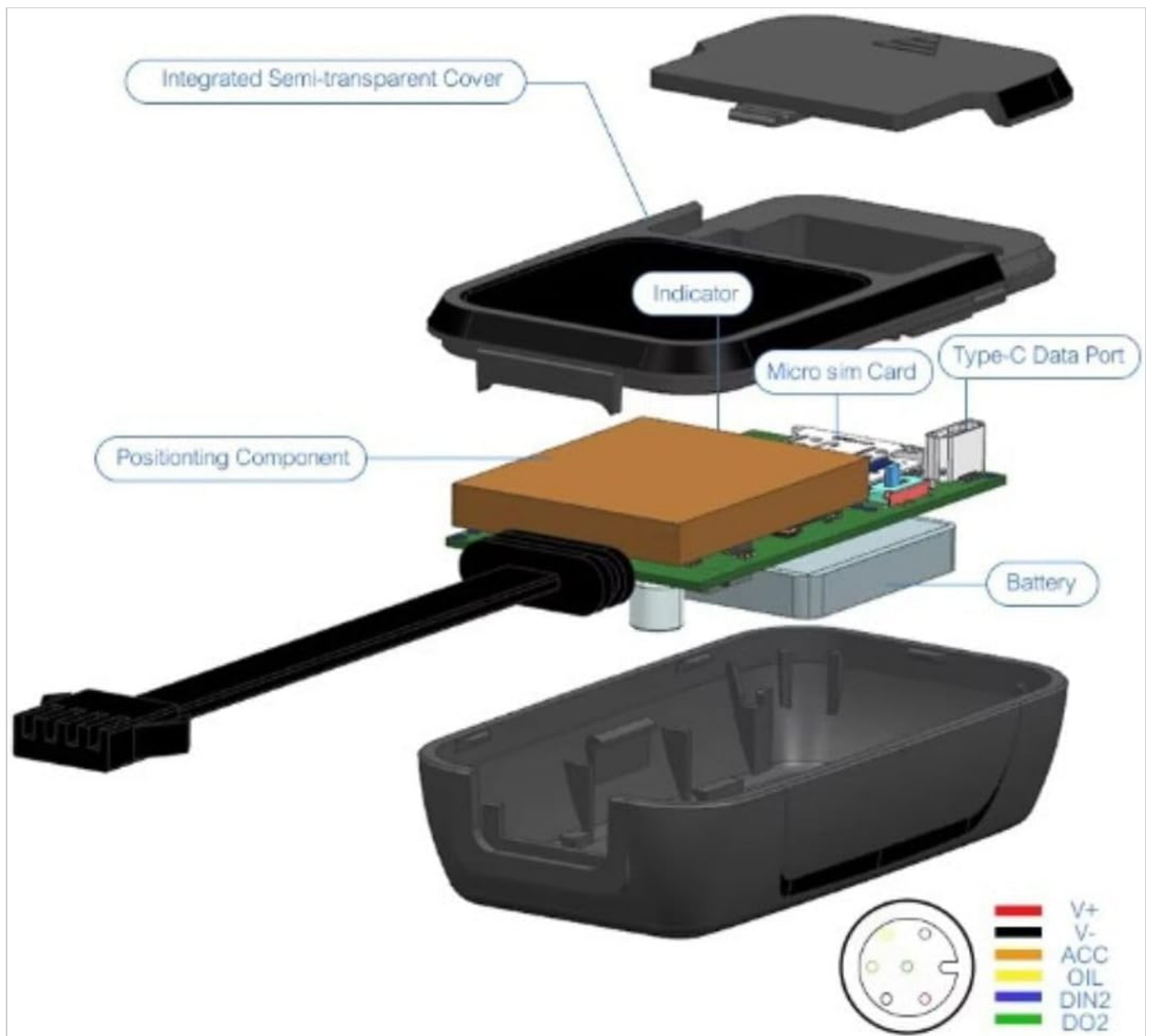


Figure 3: Exploded view of the EC33 tracker, illustrating its internal components: integrated semi-transparent cover, indicator light, micro SIM card slot, Type-C data port, positioning component, battery, and the main casing. A detailed wiring diagram for the harness is also shown, indicating connections for V+ (red), V- (black), ACC (yellow), OIL (green), DIN2 (blue), and DO2 (white).

5. SETUP AND INSTALLATION

5.1 SIM Card Installation

1. Ensure the device is powered off before inserting the SIM card.
2. Carefully remove the semi-transparent cover to access the SIM card slot (refer to Figure 2).
3. Insert a micro SIM card into the designated slot. Ensure the SIM card has an active data plan (4G/2G compatible).
4. Replace the cover securely.

5.2 Wiring and Power Connection

Refer to the wiring diagram in Figure 3 for correct connections. Professional installation is recommended.

- **Red Wire (V+):** Connect to the vehicle's positive power supply (9-90V DC).
- **Black Wire (V-):** Connect to the vehicle's ground.
- **Yellow Wire (ACC):** Connect to the vehicle's ACC (Accessory) wire, which provides power when the ignition is on.

- **Green Wire (OIL):** Connect for fuel monitoring or remote engine cut-off functionality (requires relay, not included).
- **Blue Wire (DIN2):** Digital input 2, for additional sensor connection (e.g., door open/close).
- **White Wire (DO2):** Digital output 2, for controlling external devices.

5.3 Initial Power-Up and Indicator Lights

Once connected, the device will power on. Observe the indicator lights (refer to Figure 3 for indicator location) for status:

- **Solid Red:** Power on.
- **Flashing Blue:** GPS signal acquisition.
- **Solid Blue:** GPS signal acquired.
- **Flashing Green:** GSM/4G/2G network connection.
- **Solid Green:** GSM/4G/2G network connected.

5.4 Platform and Mobile App Setup

After physical installation, you will need to configure the device with the professional platform and mobile application. Details for accessing and setting up the platform and app are typically provided after purchase or can be obtained from technical support.

6. OPERATING INSTRUCTIONS

6.1 Real-time Tracking

Access the mobile application or web platform to view your vehicle's current location on a map. The location updates automatically at set intervals.

6.2 Geofence Configuration

1. On the platform/app, navigate to the Geofence section.
2. Draw or select an area on the map to define your geofence.
3. Configure entry/exit alerts as desired.

6.3 Speed Limit Alerts

Set a maximum speed limit within the application. You will receive an alert if the vehicle exceeds this speed.

6.4 Remote Shutdown (Engine Cut-off)

In emergency situations (e.g., vehicle theft), you can remotely cut off the engine via the mobile app or platform. This feature requires proper wiring to the vehicle's fuel pump or ignition system (Green wire - OIL connection).

Warning: Use the remote shutdown feature responsibly and only when necessary. Improper use can lead to dangerous situations.

6.5 SOS Function

If an SOS button is connected (via a digital input, if applicable), pressing it will send an emergency alert to predefined contacts or the monitoring center.

7. MAINTENANCE

- **Regular Checks:** Periodically check the device and wiring for any signs of damage or loose connections.
- **Software Updates:** Ensure your mobile application and tracking platform are updated to the latest versions for optimal performance and new features.

- **SIM Card:** Ensure the SIM card has sufficient credit/data plan to maintain continuous tracking.
- **Cleaning:** Clean the device with a dry, soft cloth. Do not use harsh chemicals or liquids.

8. TROUBLESHOOTING

Problem	Possible Cause	Solution
Device not powering on	Incorrect wiring; no power supply.	Check power connections (V+ and V-). Ensure the vehicle battery is charged.
No GPS signal (Blue indicator flashing)	Device in an area with poor satellite reception (e.g., indoors, underground parking).	Move the vehicle to an open area with a clear view of the sky. Wait for the blue indicator to become solid.
No network connection (Green indicator flashing)	SIM card not inserted correctly; no data plan; poor network coverage.	Reinsert SIM card. Check SIM card balance/data plan. Move to an area with better cellular coverage.
Inaccurate location	Weak GPS signal; device interference.	Ensure the device is installed in a location with minimal obstruction to the sky. Avoid placing near strong electromagnetic sources.
Remote commands not working	No network connection; incorrect wiring for specific functions (e.g., remote shutdown).	Verify network connectivity (solid green indicator). Check wiring for the specific function.

9. SPECIFICATIONS

Feature	Detail
Model	EC33
Brand	Genérico
Connectivity Technology	4G and 2G
Compatible Devices	Smartphone
Special Features	Geofencing, SOS, Speed Alert, Fuel Monitoring, Vehicle Tracker, Anti-jammer
Working Voltage	9-90V DC
Internal Battery	Built-in 300mAh Battery
Certification	ANATEL
Manufacturer	EC33

10. WARRANTY AND SUPPORT

10.1 Manufacturer's Warranty

The Genérico EC33 Vehicle Tracker comes with a manufacturer's warranty of **3 months** from the date of purchase. This

warranty covers defects in materials and workmanship under normal use.
The warranty does not cover damages caused by:

- Improper installation or wiring.
- Accidents, abuse, misuse, or natural disasters.
- Unauthorized repairs or modifications.
- Operating the device outside its specified environmental conditions.

10.2 Technical Support

For technical assistance, installation queries, or any issues not covered in this manual, please contact the seller or manufacturer's support team. Support details are typically provided after purchase or can be found on the product packaging.

Note: The product description mentions "Total technical support for installation and questions, as well as PDF manuals sent after purchase." Please refer to your purchase documentation for specific contact information.



Related Documents - EC33

	<p>Generico HK10 Ultra 3 Max Smart Watch User Manual - Features, Setup, and Troubleshooting</p> <p>Comprehensive user manual for the Generico HK10 Ultra 3 Max Smart Watch, detailing product overview, specifications, setup, features, maintenance, and troubleshooting. Compatible with Android and iOS.</p>
	<p>ECO-CHILL 33 Thermo-Electric Portable Cooler/Warmer User Guide</p> <p>User guide for the ECO-CHILL 33 thermo-electric portable cooler and warmer. Includes safety warnings, technical specifications, operation instructions, cleaning, and storage information.</p>
	<p>Gamma+ Hair Clipper User Manual and Warranty</p> <p>Comprehensive user manual and warranty information for the Gamma+ hair clipper, covering operation, maintenance, safety, and disposal.</p>

