

Manuals+

[Q & A](#) | [Deep Search](#) | [Upload](#)

manuals.plus /

› [WinZo](#) /

› [WinZo SM8006 Luxury Smart Toilet with Bidet Seat User Manual](#)

WinZo SM8006

WinZo SM8006 Luxury Smart Toilet with Bidet Seat User Manual

Model: SM8006

INTRODUCTION

Thank you for choosing the WinZo SM8006 Luxury Smart Toilet with Bidet Seat. This manual provides essential information for the safe and efficient installation, operation, and maintenance of your new smart toilet. Please read it thoroughly before use and keep it for future reference.

IMPORTANT SAFETY INFORMATION

Always follow basic safety precautions when using electrical products to reduce the risk of fire, electric shock, or injury.

- Ensure proper grounding for electrical connections.
- Do not immerse the product in water or other liquids.
- Unplug the product during lightning storms or when unused for long periods.
- Do not operate with a damaged cord or plug.
- Keep children away from the product.

PRODUCT FEATURES

The WinZo SM8006 Smart Toilet offers a range of advanced features for enhanced comfort and hygiene:

- **Auto Flush:** Automatic flushing upon departure, with remote and foot sensor options.
- **Soft Close:** Both lid and seat feature a soft-close mechanism.
- **Efficient Flushing:** Siphonic jet and jet flushing for powerful waste removal.
- **Backup Power:** Built-in battery design ensures uninterrupted flushing even during power outages (battery not included).
- **Side Touch Buttons:** Convenient controls for essential functions.
- **Varied Cleaning Options:** Female wash, hips wash, mobile wash, and self-cleaning nozzles with UV-C sterilization.
- **Comfort Features:** Warm water, warm air drying, night light, heated seat (3 levels), LED display, seat temperature adjustment, remote control.

- **Child Seat Ring:** Includes an extra child seat attachment for family use.

PACKAGE CONTENTS

Verify that all components are present before beginning installation:

- Smart Toilet Unit
- Fixing Bolts
- Wax Ring
- Child Seat Ring
- Remote Control
- Installation Hardware (washers, nuts)

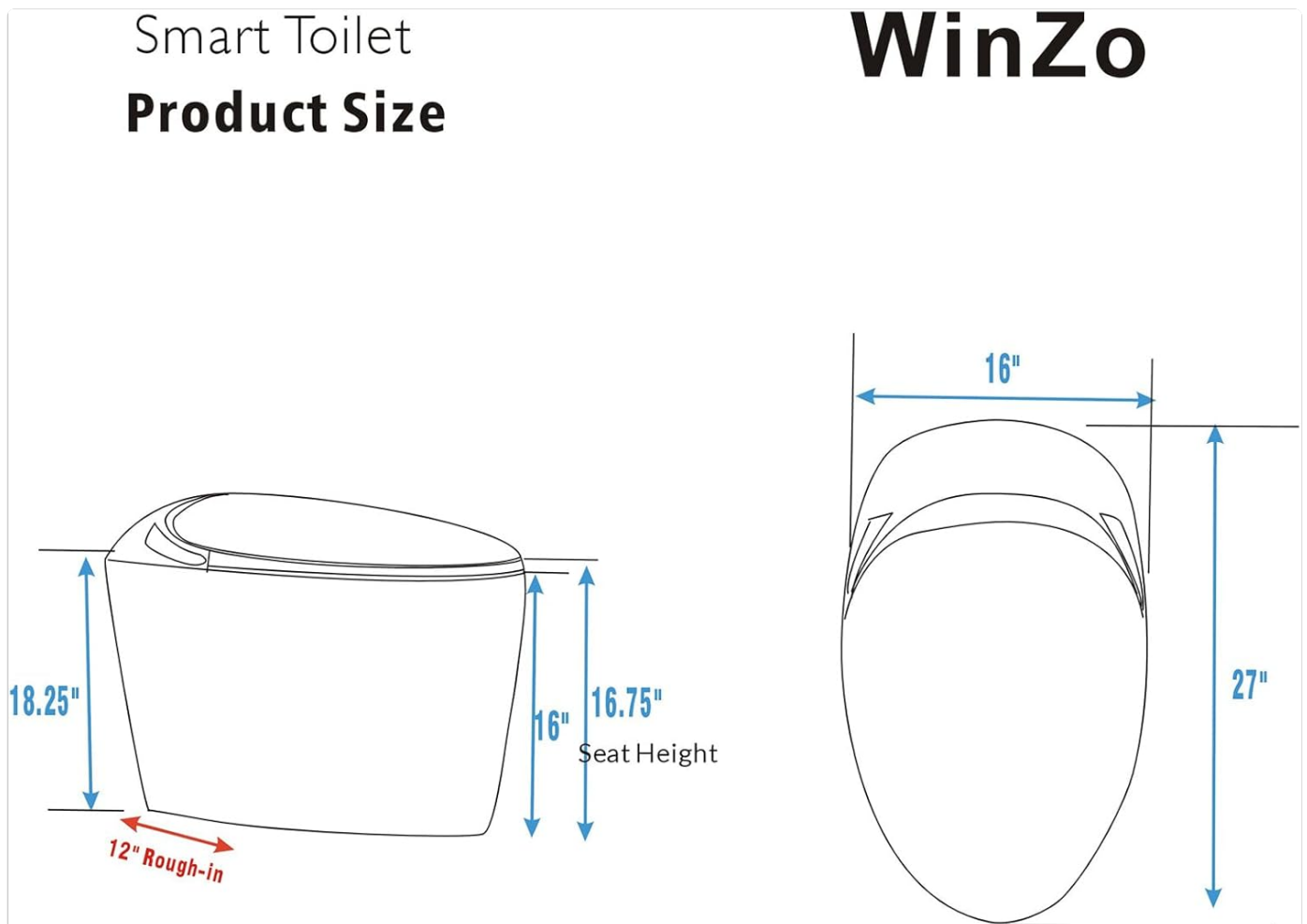


Image: Components included with the WinZo Smart Toilet, showing the wax ring, bolts, and washers.

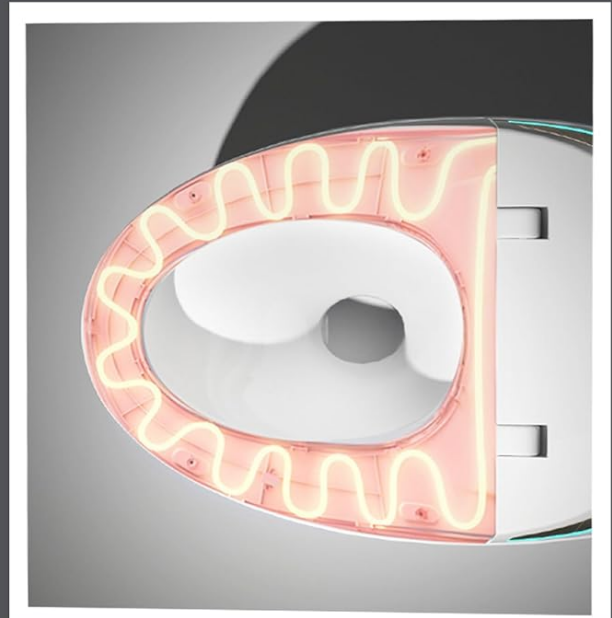
SPECIFICATIONS

Feature	Detail
Model Number	SM8006
Color	Gray
Product Dimensions	27"D x 16"W x 18.5"H
Material	Porcelain (Toilet), Acrylonitrile Butadiene Styrene (ABS) (Seat)

Item Weight	90 Pounds
Installation Type	Floor Mounted
Shape	Oval
Rough-in	Standard 12"
Flushing System	Siphonic Jet and Jet Flushing
Heated Seat	3 Adjustable Levels
Warm Air Dryer	3 Adjustable Levels
Night Light	Integrated LED

Heated Seat

3 Levels Adjustable



Warm Air Dry

3 Levels Adjustable



Image: Detailed dimensions and rough-in measurement for the WinZo Smart Toilet.

SETUP AND INSTALLATION

Proper installation is crucial for the optimal performance and longevity of your smart toilet. It is recommended to have a qualified plumber or technician perform the installation.

Pre-Installation Checklist:

- Ensure a standard 12-inch rough-in is available.
- Verify water pressure is over 0.14MPa and flow rate is over 18L/min.
- Confirm a grounded electrical outlet (120V, 60Hz) is within reach of the power cord.
- Gather necessary tools: adjustable wrench, screwdriver, measuring tape, level.

Installation Steps:

1. Prepare the Area:

Clean the floor around the drain and ensure it is dry. Check if the ground is horizontal using a level. Ensure the sewer pipe is unobstructed.

Your browser does not support the video tag.

Video: WinZo Smart Toilet installation guide, showing preparation steps like cleaning the area and checking the rough-in.

2. Install the Flange and Bolts:

Install the toilet flange and secure the bolts into the floor drain. Ensure the bolts are properly aligned.



Image: Illustration of installing the flange and bolts into the floor.

3. Install the Wax Ring:

Place the wax ring onto the bottom of the toilet unit, ensuring it forms a tight seal around the drain opening.

4. Position the Toilet:

Carefully lift the toilet and align it over the flange bolts. Gently lower the toilet, pressing down firmly to create a seal with the wax ring.

5. Secure the Toilet:

From inside the toilet bowl, put two washers over the bolts and tighten the nuts to secure the toilet to the floor. Do not overtighten.

6. Connect Water Inlet Pipe:

Install the angle valve to the water supply line. Wrap the raw material belt (Teflon tape) around the interface of the foot valve before installing. Connect the water inlet pipe to the angle valve and the toilet. Open the angle valve to the maximum and check for any water leaks.

7. Power Connection:

Plug the smart toilet into a grounded electrical outlet.

Your browser does not support the video tag.

OPERATING INSTRUCTIONS

Your WinZo Smart Toilet can be operated via the side touch buttons, foot sensor, or the wireless remote control.

Basic Functions:

- **Auto Open/Close:** The lid automatically opens when approached and closes after use.
- **Auto Flush:** The toilet flushes automatically after you leave.
- **Foot Sensor Flush:** A gentle tap with your foot near the sensor can activate flushing.
- **Heated Seat:** Adjust the seat temperature to your preference using the remote or side controls. There are 3 adjustable levels.
- **Night Light:** The integrated LED night light provides soft illumination in the dark.

Easy and Convenient Control

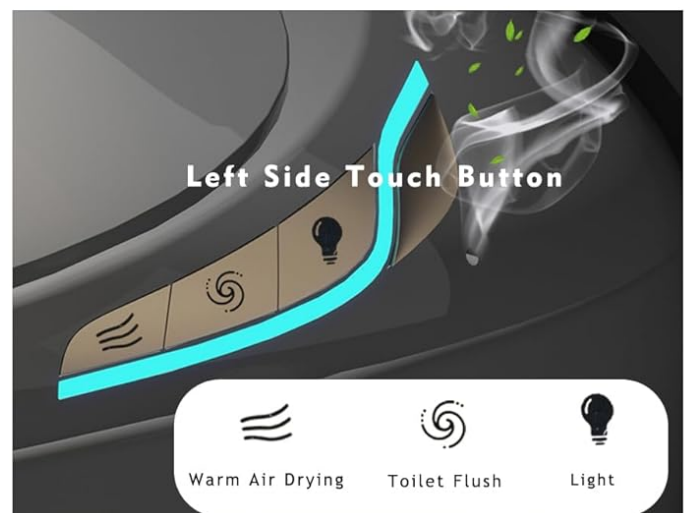
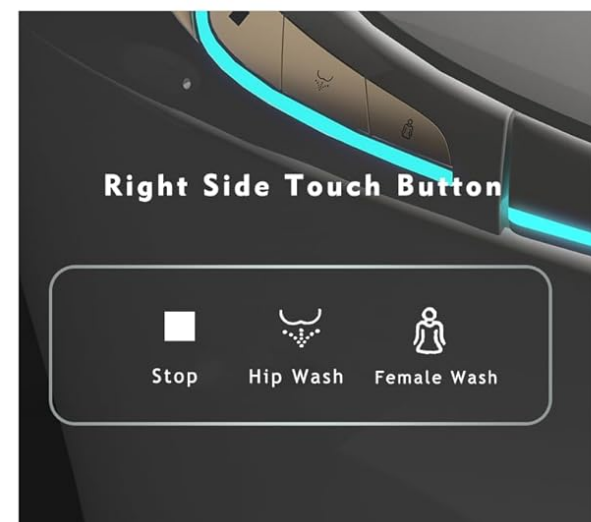


Image: Overview of the control options including the wireless remote, side touch buttons, and foot sensor.

Your browser does not support the video tag.

Video: WinZo Modern Design Smart Toilet With Nice Light Auto Flush, demonstrating auto-flush and night light features.

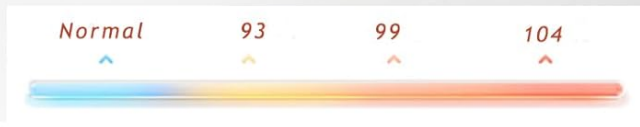
Bidet Functions:

- **Female Wash:** Gentle front wash for feminine hygiene.
- **Hips Wash (Rear Wash):** Thorough rear wash for general cleansing.
- **Mobile Wash:** The nozzle moves back and forth for a wider cleaning area.
- **Warm Water:** Adjustable water temperature for comfortable washing.
- **Warm Air Drying:** Adjustable warm air for drying after washing (3 levels).
- **Nozzle Self-Cleaning:** Automatic cleaning of the nozzle before and after each use, enhanced with UV-C sterilization.

Comfortable Cleaning Functions

Adjustable Water Temp

Adjustable Water Flow



Nozzle Self Cleaning



Hip Cleaning



Female Cleaning



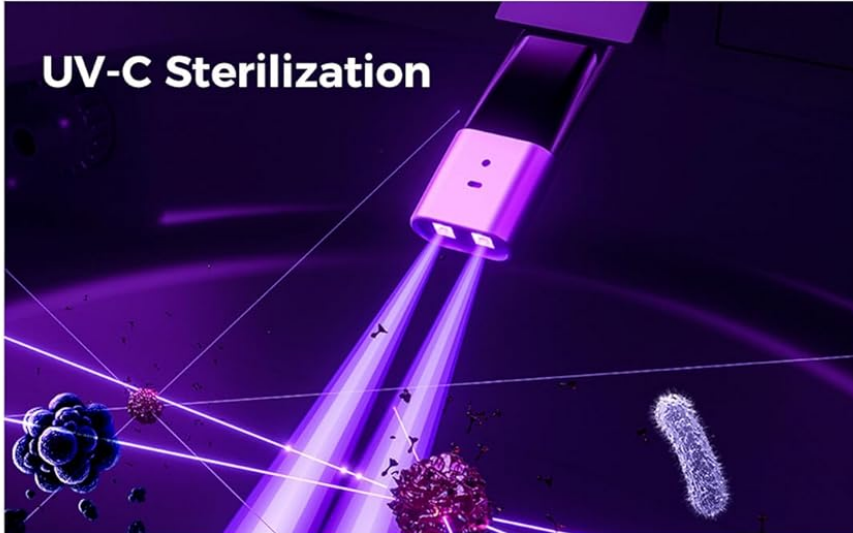
Mobile Cleaning

Image: Visual representation of the various cleaning functions and adjustable settings.

Self-Cleaning Nozzles with UV-C Technology

Multiple Cleaning Modes

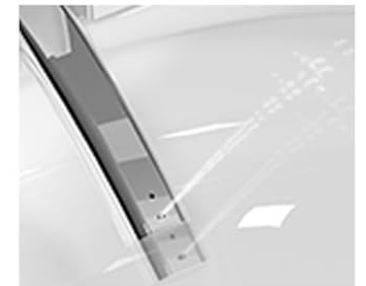
Keep Healthy and Hygienic Life



Female Wash (Front Wash)



Hip Washing (Back Wash)



Mobile Wash



Self Cleaning

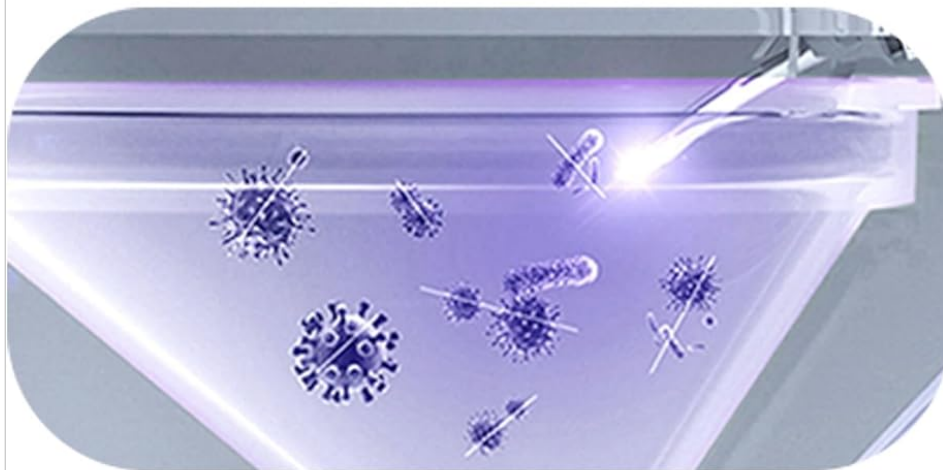


Image: Depiction of UV-C sterilization for nozzles and different cleaning modes.

Your browser does not support the video tag.

Video: WinZo Luxury Night Light Smart Toilet with Powerful Flush, showcasing flushing power and night light.

MAINTENANCE

Regular maintenance ensures the hygiene and longevity of your WinZo Smart Toilet.

Cleaning the Exterior:

- Wipe the exterior surfaces with a soft, damp cloth and mild, non-abrasive cleaner.
- Do not use harsh chemicals, abrasive cleaners, or scrub brushes, as these can damage the finish.

- Ensure no water enters the electrical components.

Nozzle Cleaning:

- The nozzle performs an automatic self-cleaning cycle.
- For deeper cleaning, refer to the remote control for a dedicated nozzle cleaning function.
- Gently wipe the nozzle with a soft cloth if visible residue is present.

Filter Maintenance:

Periodically check the water filter (if applicable) for sediment buildup. Clean or replace as needed according to the filter's instructions.

TROUBLESHOOTING

If you encounter issues with your WinZo Smart Toilet, refer to the following common problems and solutions:

Problem	Possible Cause	Solution
Toilet does not flush automatically.	Sensor obstruction, power issue, or auto-flush setting disabled.	Ensure the sensor is clean and unobstructed. Check power connection. Verify auto-flush setting on remote.
Bidet water is not warm.	Heater setting too low or disabled, water supply issue.	Adjust water temperature setting on the remote. Ensure water supply is connected and valve is open.
Heated seat is not working.	Heated seat setting too low or disabled.	Adjust seat temperature setting on the remote or side buttons.
Weak flush.	Low water pressure, partial clog, or water valve not fully open.	Check water supply valve is fully open. Inspect for clogs. Ensure water pressure meets specifications.
Lid/Seat not opening/closing automatically.	Sensor obstruction or malfunction.	Clean the proximity sensor. If the issue persists, contact customer support.

WARRANTY AND SUPPORT

For warranty information, please refer to the documentation included with your purchase or visit the official WinZo website. For technical support, troubleshooting assistance, or to order replacement parts, please contact WinZo customer service.

WinZo Customer Support:

- Online: [Visit the WinZo Store on Amazon](#)
- Refer to your product packaging for additional contact methods.

