



Manuals.plus /

- › WinZo /
- › WinZo Luxury Smart Toilet Instruction Manual

WinZo SM8006

WinZo Luxury Smart Toilet User Manual

Model: SM8006 | Brand: WinZo

Introduction

Safety Information

Package Contents

Setup & Installation

Operating Instructions

Maintenance

Troubleshooting

Specifications

Support

1. INTRODUCTION

Thank you for choosing the WinZo Luxury Smart Toilet. This advanced toilet system combines modern design with intelligent features to enhance your bathroom experience. It includes functions such as auto-flush, a bidet seat with adjustable warm water and dryer, a heated seat, night light, and convenient control options. This manual provides detailed instructions for installation, operation, maintenance, and troubleshooting to ensure optimal performance and longevity of your smart toilet.



Figure 1.1: WinZo Luxury Smart Toilet (Matte Black)

2. SAFETY INFORMATION

Please read all safety instructions carefully before installation and use. Failure to follow these instructions may result in electric shock, fire, or other hazards.

- Ensure the power supply is disconnected before any installation or maintenance.
- This product must be installed by a qualified professional in accordance with local plumbing and electrical codes.
- Do not immerse the product or its electrical components in water.
- Do not use abrasive cleaners or harsh chemicals on the toilet surface or internal components.
- Keep children and pets away from the toilet during operation, especially when the lid is opening/closing automatically or bidet functions are active.
- The built-in battery is for emergency flushing during power outages; it is not intended for continuous operation. Ensure the battery is properly installed (battery not included).

3. PACKAGE CONTENTS

Verify that all components are present in the package before beginning installation:

- WinZo Luxury Smart Toilet Unit
- Angle Valve
- Fixing Bolts
- Wax Ring
- Remote Control (with batteries, if included)
- User Manual (this document)

4. SETUP & INSTALLATION

The WinZo Smart Toilet is designed for standard 12-inch rough-in installations and offers easy setup. Professional installation is recommended.

4.1 Pre-Installation Checks

- Ensure your bathroom has a standard 12-inch rough-in for the toilet.
- Confirm the availability of a grounded electrical outlet near the installation area.
- It is highly recommended to change your existing water service valve behind the toilet to the included angle valve to ensure strong water flow, which is crucial for optimal flushing performance.

4.2 Installation Steps

1. Turn off the water supply to the existing toilet and flush to empty the tank. Disconnect and remove the old toilet.
2. Clean the flange area thoroughly.
3. Install the new angle valve to the water supply line.
4. Place the wax ring onto the toilet flange.
5. Carefully position the WinZo Smart Toilet over the wax ring and align it with the fixing bolts. Press down firmly to create a seal.
6. Secure the toilet to the floor using the provided fixing bolts. Do not overtighten.
7. Connect the water supply hose from the angle valve to the toilet's water inlet.
8. Connect the power cord to a grounded electrical outlet.
9. Turn on the water supply and check for leaks.
10. Perform an initial flush to ensure proper operation.

Smart Toilet Product Size

WinZo

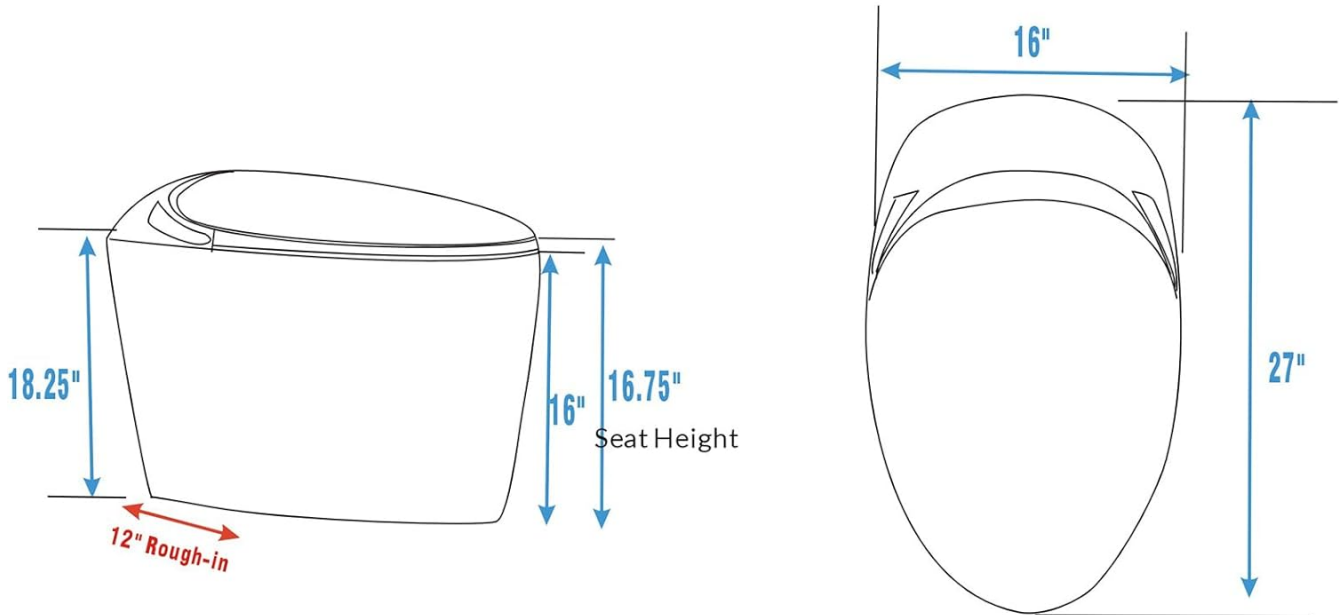


Figure 4.1: Product Dimensions and Rough-in



Figure 4.2: Installed Smart Toilet

5. OPERATING INSTRUCTIONS

The WinZo Luxury Smart Toilet offers a range of automated and user-controlled features for comfort and hygiene.

5.1 Auto Open & Soft Close Lid

The toilet lid features an auto-open function, detecting presence to lift automatically. Both the lid and seat are designed with a soft-close mechanism to prevent slamming.



Figure 5.1: Auto-Opening Lid

5.2 Flushing Functions

The toilet offers multiple flushing options:

- **Auto Flush:** The toilet will automatically flush after you leave.
- **Remote Control Flushing:** Use the wireless remote to activate flushing.
- **Foot Sensor Flushing:** A sensor at the base allows for hands-free flushing by tapping your foot.
- **Side Button Flushing:** Press the dedicated flush button on the side panel.



Figure 5.2: Auto-Flush Activation



Figure 5.3: Foot Sensor for Flushing

5.3 Bidet & Cleaning Options

The integrated bidet offers various washing modes with adjustable water temperature and flow.

- **Female Washing:** Gentle front wash.
- **Hips Washing (Rear Wash):** Thorough rear wash.
- **Move Washing:** The nozzle oscillates for a wider cleaning area.
- **Adjustable Water Temperature:** Select your preferred water temperature (e.g., 93°F, 99°F, 104°F).

- **Adjustable Water Flow:** Control the intensity of the water spray.



Figure 5.4: Bidet Cleaning Functions

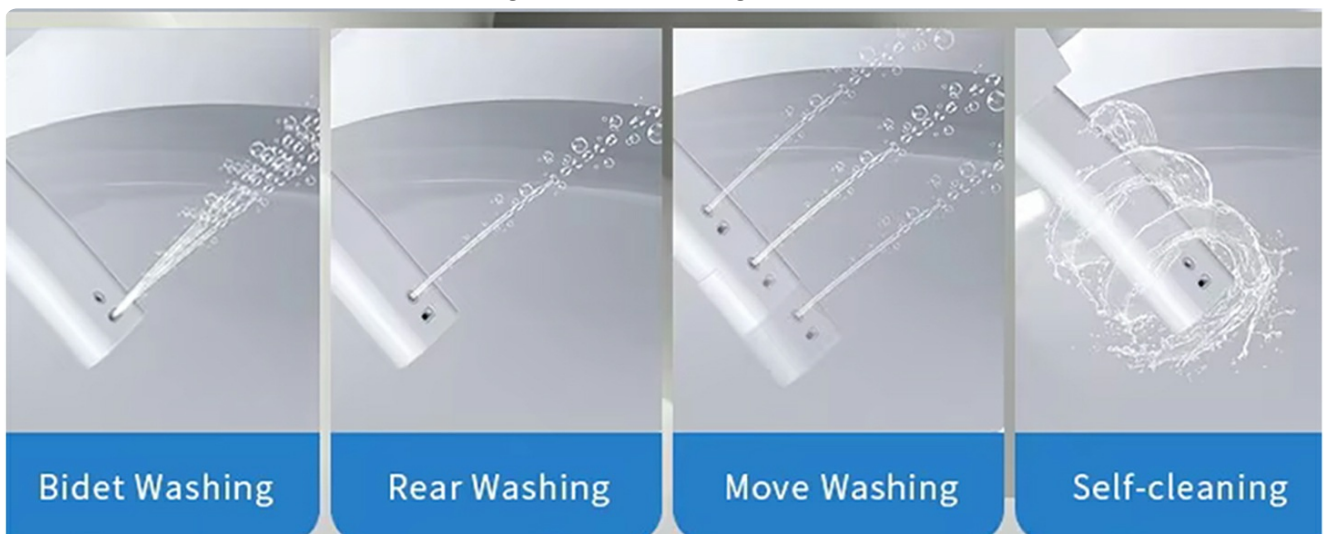


Figure 5.5: Various Washing Modes

5.4 Warm Air Drying

After washing, use the warm air dryer for a comfortable and hygienic finish. The dryer offers 3 adjustable temperature levels.



Figure 5.6: Warm Air Drying Function

5.5 Heated Seat

Enjoy a comfortable experience with the heated seat, offering 3 adjustable temperature levels (OFF, 93°F, 100°F, 104°F).

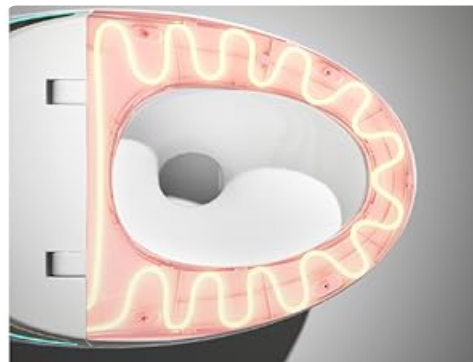


Figure 5.7: Heated Seat Mechanism



Figure 5.8: Seat Temperature Display

5.6 Night Light & LED Display

The toilet features an ambient blue light strip, perfect for nighttime visits, and an LED display for function status.



Figure 5.9: Night Light Feature

5.7 Control Options: Remote & Side Buttons

Control all features using the wireless remote control or the convenient side touch buttons.

- **Wireless Remote Control:** Provides full control over all smart features.
- **Right Side Touch Buttons:** Includes Stop, Hip Wash, and Female Wash functions.
- **Left Side Touch Buttons:** Includes Warm Air Drying, Toilet Flush, and Light functions.

Easy and Convenient Control

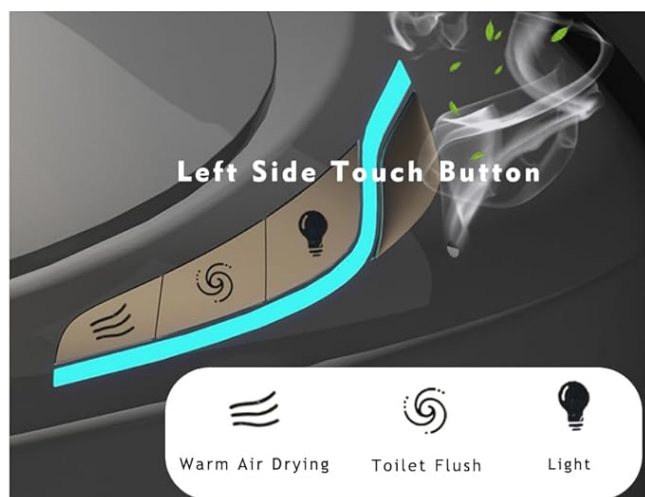
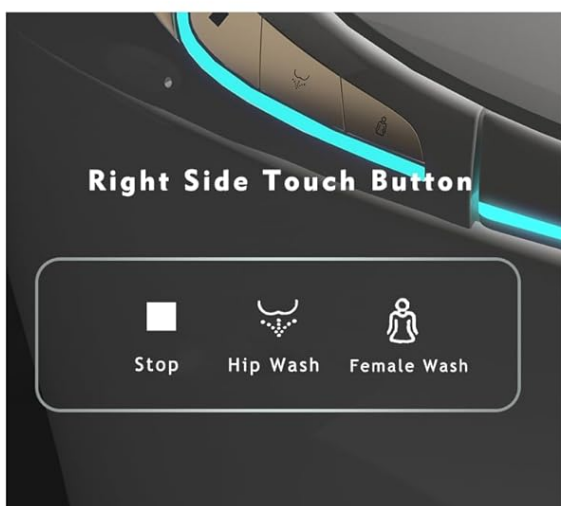
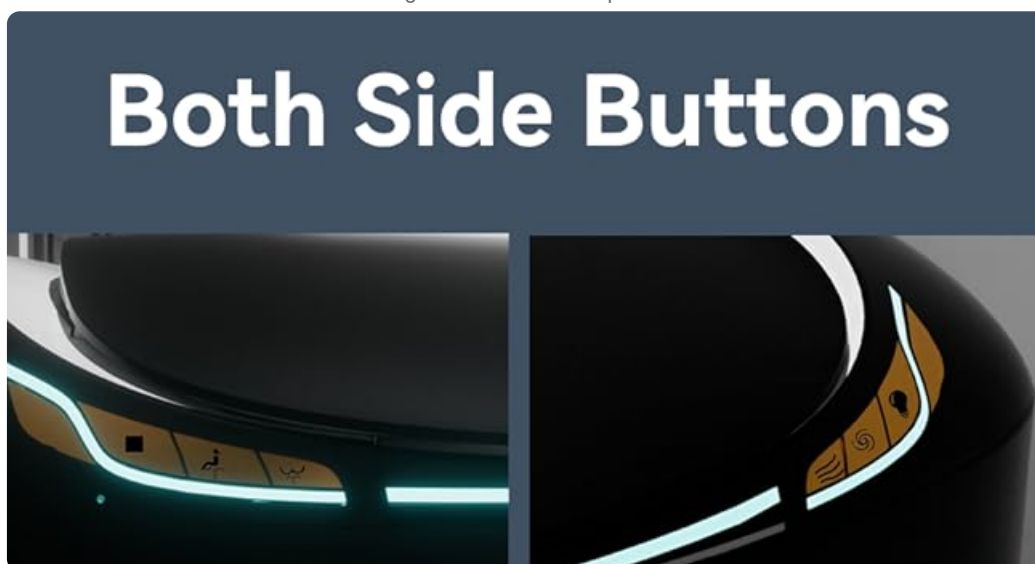


Figure 5.10: Control Options



5.8 Child Seat Attachment

The toilet includes an extra child seat attachment, making it suitable for the entire family.

Adult Smart Seat With Child Seat

Perfect Fit for the Whole Family



Figure 5.12: Adult Smart Seat with Child Seat



Figure 5.13: Child Seat Attachment

6. MAINTENANCE

Regular cleaning and maintenance will ensure the longevity and hygienic operation of your WinZo Smart Toilet.

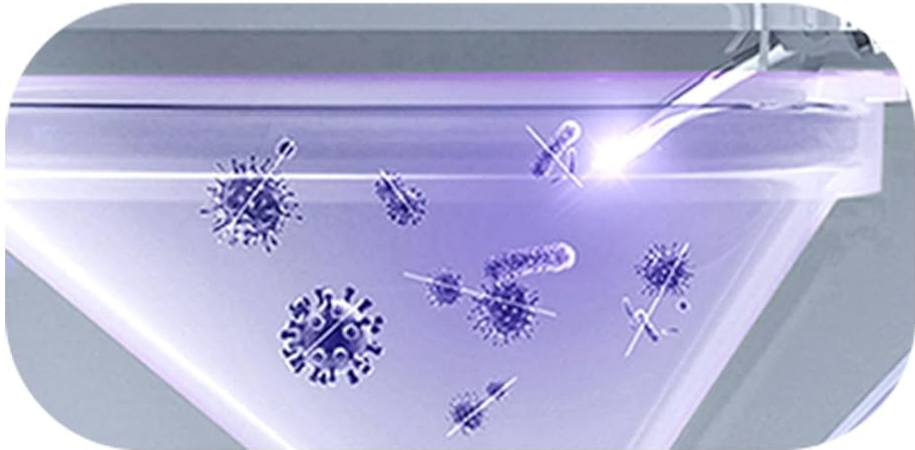
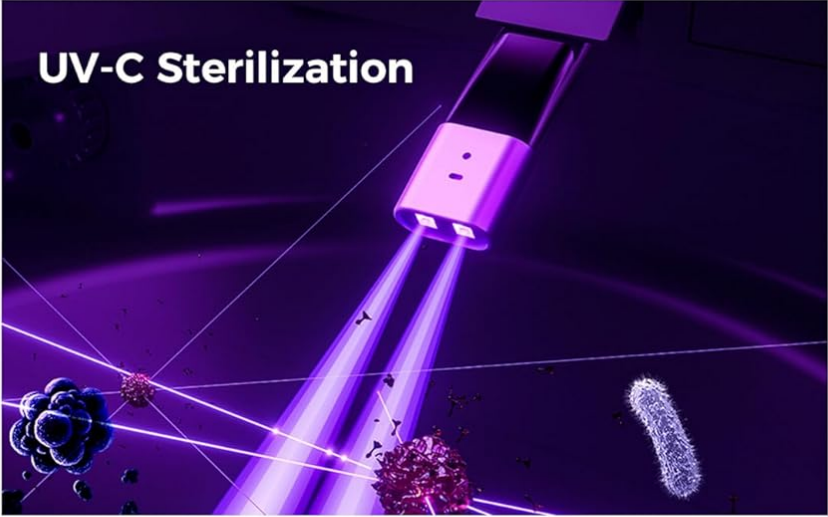
6.1 Nozzle Self-Cleaning with UV-C Technology

The bidet nozzle features an automatic self-cleaning function, utilizing UV-C technology for sterilization to maintain hygiene.

Self-Cleaning Nozzles with UV-C Technology

Multiple Cleaning Modes

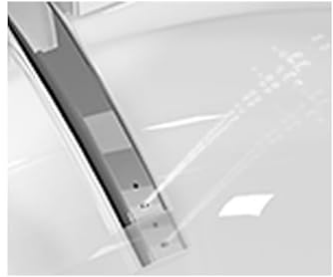
Keep Healthy and Hygienic Life



Female Wash (Front Wash)



Hip Washing (Back Wash)



Mobile Wash



Self Cleaning

Figure 6.1: Self-Cleaning Nozzles with UV-C Technology



Figure 6.2: Nozzle Self-Cleaning

6.2 General Cleaning

- Use a soft cloth and mild, non-abrasive bathroom cleaner for external surfaces.
- Avoid spraying water directly onto electrical components.
- For the seat and lid, use a damp cloth with mild soap.
- Do not use harsh chemicals, bleach, or abrasive pads, as these can damage the finish and electronic components.

7. TROUBLESHOOTING

This section addresses common issues you might encounter with your WinZo Smart Toilet.

Problem	Possible Cause	Solution
Toilet does not flush during power outage.	Emergency battery not installed or depleted.	Install a new battery (not included) or replace the existing one. The battery ensures uninterrupted flushing during power outages.
Lid auto-open/foot sensor not responding consistently.	Sensor obstruction or sensitivity issue.	Ensure the sensor area is clean and unobstructed. Note that the floor sensor may struggle with darker colored flooring.
LED light strip around the toilet is not working.	Internal component failure.	This indicates a potential internal issue. Please contact WinZo customer support for assistance.
Plastic foil on flush button is peeling.	Wear and tear.	This is a cosmetic issue. You may use a strong adhesive like superglue to re-secure the foil.
Weak bidet spray or flushing.	Insufficient water pressure.	Ensure the angle valve is fully open. Verify that the water service valve behind the toilet provides strong water flow.

If the problem persists after attempting these solutions, please contact WinZo customer support.

8. SPECIFICATIONS

Feature	Detail
Model Number	SM8006
Color	Matte Black
Product Dimensions (D x W x H)	27"D x 16"W x 18.5"H
Material	Porcelain (Toilet), Acrylonitrile Butadiene Styrene (ABS) (Seat)
Item Weight	90 Pounds
Installation Type	Floor Mounted
Shape	Oval
Rough-in	Standard 12"
Finish	Ceramic
Included Components	Angle valve, Smart toilet, fixing bolts, wax ring
Batteries Included?	No (for emergency flush battery)

9. WARRANTY & SUPPORT

WinZo is committed to providing high-quality products and customer satisfaction. While specific warranty details are not provided in this manual, WinZo offers customer support for product inquiries and assistance.

For any questions, technical support, or warranty claims, please contact WinZo customer service through the retailer where you purchased the product or visit the official WinZo brand store online.

Note: No official product videos from the seller were found to be relevant for embedding in this manual.