

## Manuals+

[Q & A](#) | [Deep Search](#) | [Upload](#)

manuals.plus /

› [MSI](#) /

› [MSI MAG 276CXF Curved Gaming Monitor User Manual](#)

### MSI MAG 276CXF

# MSI MAG 276CXF Curved Gaming Monitor User Manual

Model: MAG 276CXF



Figure 1.0.1: Front view of the MSI MAG 276CXF Curved Gaming Monitor.

## 1. IMPORTANT SAFETY INFORMATION

Please read these safety instructions carefully before using your monitor. Keep this manual for future reference.

- Always disconnect the power cord from the electrical outlet before cleaning the monitor.
- Do not expose the monitor to rain or moisture to avoid fire or shock hazards.

- Do not open the monitor casing. There are no user-serviceable parts inside. Refer all servicing to qualified service personnel.
- Ensure proper ventilation. Do not block ventilation openings.
- Place the monitor on a stable, level surface to prevent it from falling.
- Use only the power adapter and cables provided by the manufacturer.

## 2. PACKAGE CONTENTS

---

Verify that all items are present in your product package. If any items are missing or damaged, contact your retailer.

- MSI MAG 276CXF Monitor
- Monitor Stand (Base and Neck)
- Power Cable
- HDMI Cable
- DisplayPort Cable
- User Manual / Quick Start Guide
- Screws for Stand Assembly

## 3. SETUP AND INSTALLATION

---

### 3.1 Stand Assembly

1. Carefully place the monitor face down on a soft, clean surface to prevent scratches.
2. Attach the stand neck to the monitor using the provided screws.
3. Attach the stand base to the stand neck and secure it with the thumb screw or screws.
4. Gently lift the monitor and place it on a stable desk.

The monitor also supports VESA wall mounting (100x100mm) if the stand is removed.

### 3.2 Connecting the Monitor

Connect the monitor to your computer and power source using the appropriate cables.

- **Power Connection:** Connect the power cable to the monitor's power input and then to a wall outlet.
- **Video Connection:**
  - For optimal performance, use the DisplayPort cable to connect to your computer's graphics card.
  - Alternatively, use an HDMI cable to connect to your computer.
  - A VGA port is also available for older systems.
- **Audio Output:** Connect headphones or external speakers to the 3.5mm earphone out port on the monitor.



Figure 3.2.1: Rear view of the MSI MAG 276CXF monitor, highlighting the HDMI, DisplayPort, and power input connections.



Figure 3.2.2: Bottom view of the MSI MAG 276CXF monitor, showing the downward-facing input ports for cable management.

## 4. OPERATING THE MONITOR

---

### 4.1 Power On/Off

The monitor features a 5-way joystick control located on the rear for power and OSD menu navigation.

- To power on the monitor, press the joystick button.
- To power off the monitor, press and hold the joystick button for a few seconds until the monitor turns off.

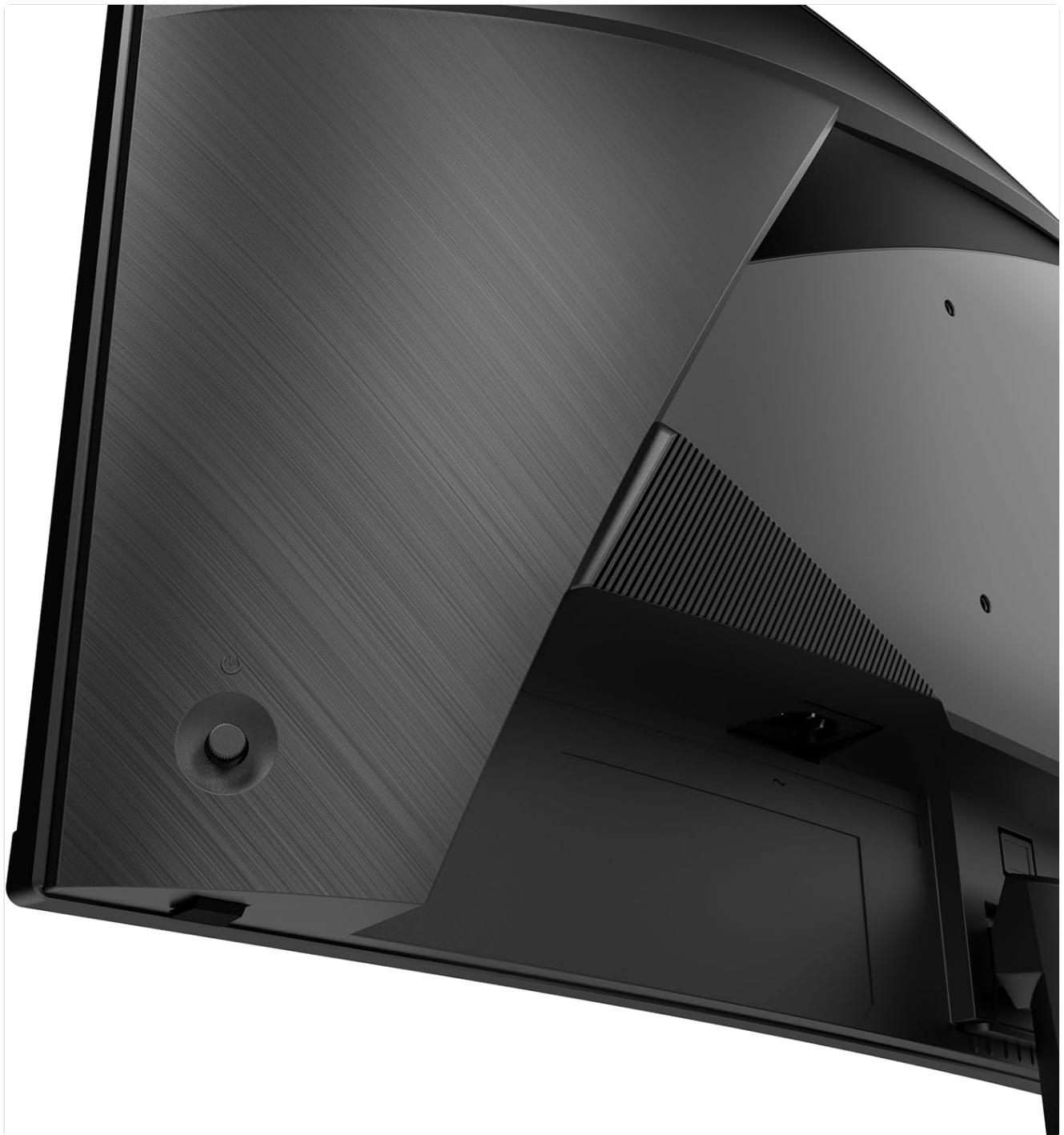


Figure 4.1.1: Rear view of the MSI MAG 276CXF monitor, indicating the location of the 5-way joystick for power and menu control.

## 4.2 OSD (On-Screen Display) Menu Navigation

The OSD menu allows you to adjust various monitor settings. Use the 5-way joystick to navigate.

- Press the joystick button once to open the OSD menu.
- Move the joystick Up/Down to navigate through menu options.
- Move the joystick Left/Right to adjust values or enter sub-menus.
- Press the joystick button again to confirm a selection or exit a sub-menu.
- Move the joystick Left to exit the OSD menu.

## 4.3 Basic Settings

Commonly adjusted settings include:

- **Gaming:** Adjust refresh rate, response time (Rapid VA), FreeSync/G-Sync compatibility, and game modes.

- **Image:** Adjust Brightness, Contrast, Sharpness, and Color Temperature.
- **Input Source:** Manually select between HDMI, DisplayPort, or VGA inputs.
- **PIP/PBP:** Picture-in-Picture or Picture-by-Picture modes (if supported).
- **System:** Language, OSD timeout, Reset to default settings.

## 5. MAINTENANCE

---

### 5.1 Cleaning the Monitor

- Always unplug the monitor from the power outlet before cleaning.
- Use a soft, lint-free cloth slightly dampened with water or a mild, non-abrasive screen cleaner.
- Do not spray cleaner directly onto the screen. Apply it to the cloth first.
- Wipe the screen gently to avoid scratching.
- For the casing, use a soft, dry cloth. Avoid harsh chemicals.

### 5.2 Storage

If storing the monitor for an extended period:

- Disconnect all cables and the power cord.
- Disassemble the stand if necessary and pack the monitor in its original packaging or a suitable protective box.
- Store in a cool, dry place away from direct sunlight and extreme temperatures.

## 6. TROUBLESHOOTING

---

If you encounter issues with your monitor, refer to the following common solutions:

Problem	Possible Solution
No image or "No Signal" message	<ul style="list-style-type: none"><li>• Ensure the power cable is securely connected to the monitor and power outlet.</li><li>• Verify the video cable (HDMI/DisplayPort/VGA) is firmly connected to both the monitor and your computer.</li><li>• Check if the correct input source is selected in the OSD menu.</li><li>• Ensure your computer is powered on and not in sleep mode.</li></ul>
Image flickering or unstable display	<ul style="list-style-type: none"><li>• Check video cable connections. Try a different cable if available.</li><li>• Ensure your graphics card drivers are up to date.</li><li>• Reduce the refresh rate in your computer's display settings to see if the issue persists.</li><li>• Test the monitor with another computer if possible.</li></ul>
Incorrect resolution or refresh rate	<ul style="list-style-type: none"><li>• Adjust the display settings in your operating system (Windows Display Settings, NVIDIA Control Panel, AMD Radeon Software).</li><li>• Ensure your graphics card supports the desired resolution and refresh rate.</li><li>• Use a DisplayPort cable for the highest refresh rates.</li></ul>

Problem	Possible Solution
No audio from earphone out	<ul style="list-style-type: none"><li>• Check the volume settings on the monitor's OSD menu and your computer.</li><li>• Ensure the audio output device is correctly selected in your computer's sound settings.</li><li>• Verify the audio cable connection to your headphones/speakers.</li></ul>

## 7. SPECIFICATIONS

---

Feature	Detail
Model Name	MAG 276CXF
Screen Size	27 Inches
Panel Type	VA (Rapid VA)
Curvature	1500R
Resolution	1920 x 1080 (FHD)
Aspect Ratio	16:9
Refresh Rate	280Hz
Response Time	0.5ms (GtG)
Video Ports	HDMI, DisplayPort, VGA
Audio Ports	Earphone Out (3.5mm)
VESA Mounting	100x100mm
Tilt Adjustment	Yes
Dimensions (LxWxH)	9.84 x 24.04 x 17.78 inches
Weight	14.12 pounds
Color	Black
Manufacturer	MSI

## 8. WARRANTY AND SUPPORT

---

For warranty information, technical support, or service inquiries, please refer to the warranty card included in your package or visit the official MSI website. You can find detailed support resources, FAQs, and contact information there.

**MSI Official Website:** [www.msi.com](http://www.msi.com)