

## SMALLRIG 4840

# SmallRig Mini NATO Side Handle 4840 Instruction Manual

### INTRODUCTION

---

The SmallRig Mini NATO Side Handle 4840 is designed to enhance the stability and control of your camera setup during handheld shooting. Its ergonomic design and adjustable features aim to reduce arm fatigue and provide a comfortable grip for extended use. This manual provides detailed instructions for setup, operation, and maintenance of your side handle.



Image: SmallRig Mini NATO Side Handle 4840 attached to a camera cage, showcasing its compact design and integration with a camera system.

## PACKAGE CONTENTS

---

- Side Handle x 1
- Handle Adapter x 1

## Package

Side Handle × 1  
Handle Adapter × 1  
ID: 4840



## Specifications

### Product Dimensions

105.5 × 68.0 × 53.8mm  
4.1 × 2.7 × 2.1in

### Package Dimensions

136.0 × 102.5 × 51.0mm  
5.3 × 4.0 × 2.0in

### Product Weight

149.0 ± 5.0g / 5.3 ± 0.2oz

### Package Weight

198.0 ± 5.0g / 7.0 ± 0.2oz

### Material(s)

PC+10%Gf, Silicone, Aluminum Alloy

Image: The SmallRig Mini NATO Side Handle 4840 and its included handle adapter, laid out to show all components in the package.

## KEY FEATURES

- **Ergonomic Design:** The handle features a non-slip silicone contact surface, designed to conform to the hand's shape for comfortable and stable shooting, even in varying temperatures.
- **Adjustable Versatility:** The side handle can be configured for both left and right-hand use. It offers 43mm (1.7 inches) of vertical adjustment, allowing users to find the optimal holding position for different camera sizes and setups. The maximum load capacity is 6kg (13lbs).
- **Multiple Mounting Options:** Integrated accessory points include a 1/4"-20 threaded hole, a strap hole, and a cold shoe. These allow for the attachment of various accessories such as monitor mounts, magic arms, LED video lights, and microphones.
- **Integrated Magnetic Wrench:** A magnetic wrench is built into the bottom of the handle for convenient access, facilitating quick assembly and disassembly.

## Ergonomic Design

The handle is ergonomically designed, with a silicone patch embedded in the handle, which is comfortable to hold and is anti-slip and anti-freeze



Image: A detailed view of the handle's ergonomic shape and textured silicone for enhanced grip and comfort.

# Product Details Display



Image: Illustration demonstrating the 43mm (1.7 inches) up and down adjustment capability of the handle.



# Up and Down Adjustment

It can be adjusted up and down by 43 mm (1.7 inches)



Image: Product details displaying the cold shoe, 1/4"-20 threaded hole, and strap slot for accessory attachment.

## SETUP AND INSTALLATION

1. **Attaching to a Camera Cage:** The Mini NATO Side Handle is designed to attach to camera cages equipped with a NATO rail. Align the handle's adapter with the NATO rail on your camera cage and slide it into place. Secure it by tightening the locking lever.
2. **Note on NATO Rail:** If your camera cage does not have a built-in NATO rail, it is recommended to use it with a SmallRig NATO rail (e.g., models 1409 or 2172), which must be purchased separately.
3. **Adjusting Hand Orientation:** To switch the handle between left and right-hand use, remove the connecting part of the handle adapter, rotate it, and reattach it to change the direction.
4. **Vertical Adjustment:** Loosen the screws on the handle adapter using the built-in magnetic wrench. Slide the handle up or down by up to 43mm (1.7 inches) to achieve your desired height, then re-tighten the screws to secure.

# Flexibly Installed on the Left and Right Side

It can allow you to adjust to the best holding position  
according to the size of the camera

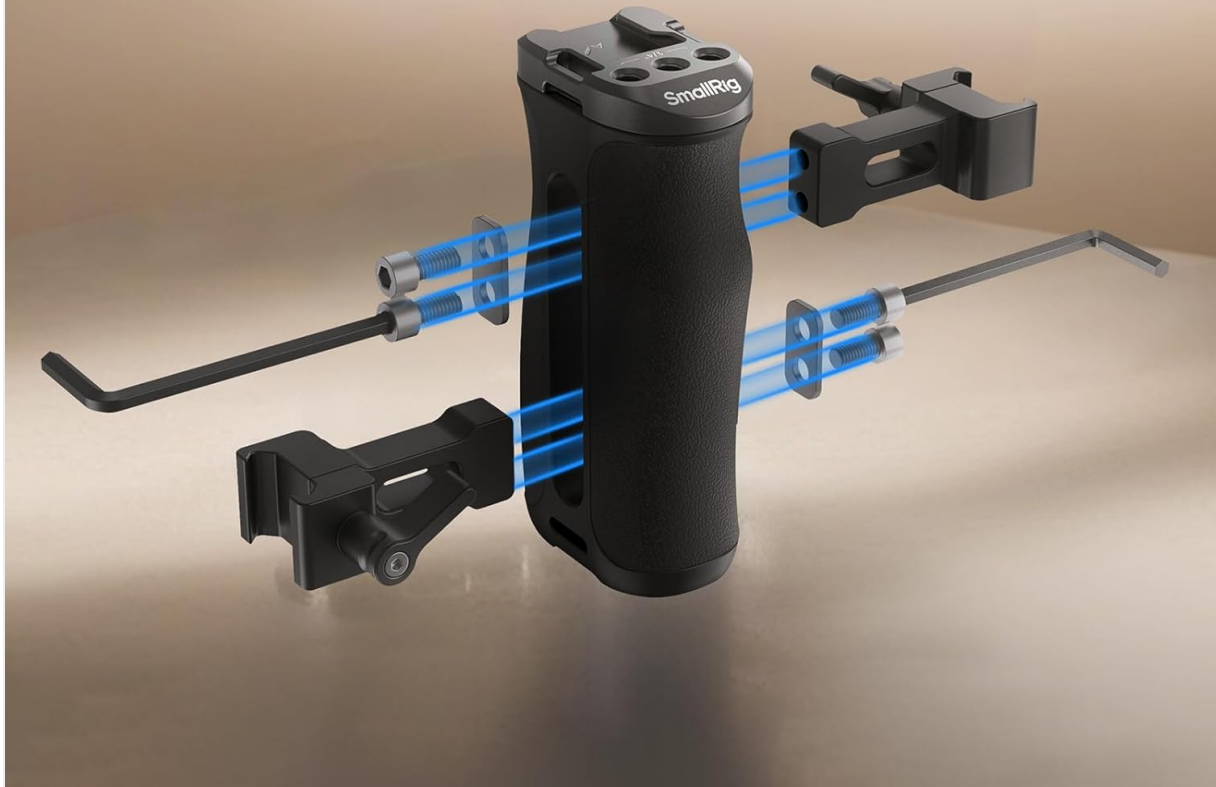


Image: The handle's adapter being installed on a camera cage, illustrating its flexible installation on either the left or right side.



Image: Visual guide on how to configure the handle for left or right-hand operation, including the location of the built-in magnetic hex wrench.

# NO NATO Rail Included



## Please Note

This Handle Kit can also be adapted to the cage with built-in NATO rail. If you do not have a cage with built-in NATO rail, it is recommended to use it with SmallRig NATO rail 1409 or 2172 (purchase separately).



ID: 1409



ID: 2172

Image: A note indicating that the handle requires a NATO rail, suggesting separate purchase of SmallRig NATO rails 1409 or 2172 if not already present on the cage.

## Setup Video

Your browser does not support the video tag.

Video: A short demonstration of attaching a SmallRig NATO side handle to a camera cage, illustrating the quick snap-on mechanism.

Your browser does not support the video tag.

Video: A user demonstrating the attachment of a SmallRig Mini Side Handle to a camera rig, highlighting its comfortable grip and ease of installation.

## OPERATING INSTRUCTIONS

Once the handle is securely attached and adjusted to your preference, you can begin utilizing its various mounting points to expand your camera rig's capabilities.

- **Cold Shoe:** Attach accessories such as microphones, LED lights, or wireless receivers to the cold shoe mount located on top of the handle.



- **1/4"-20 Threaded Hole:** Use this standard thread for attaching monitor mounts, magic arms, or other compatible accessories.
- **Strap Hole:** Secure a wrist strap or shoulder strap through the designated strap hole for added security during handheld operation.



Image: The handle supporting a camera rig with a monitor, power bank holder, and top handle, illustrating its maximum load capacity of 6kg (13lbs).

### SPECIFICATIONS

Feature	Detail
Product Dimensions	4.15 x 2.68 x 2.12 inches (105.5 x 68.0 x 53.8mm)
Item Weight	5.3 ounces (149 Grams)
Package Dimensions	5.3 x 4.0 x 2.0 inches (136.0 x 102.5 x 51.0mm)
Package Weight	7.0 ounces (198.0 Grams)
Material(s)	PC+10%GF, Silicone, Aluminum Alloy

Model Number	4840
Compatible Devices	Camera Cage (with NATO rail)

### MAINTENANCE

To ensure the longevity and optimal performance of your SmallRig Mini NATO Side Handle 4840, follow these maintenance guidelines:

- **Cleaning:** Wipe the handle with a soft, dry cloth to remove dust and debris. For stubborn dirt, use a slightly damp cloth and mild soap, then dry thoroughly. Avoid harsh chemicals or abrasive materials.
- **Storage:** Store the handle in a clean, dry environment away from extreme temperatures and direct sunlight when not in use.
- **Inspection:** Periodically check all screws and connections to ensure they are tight. Use the built-in magnetic wrench to re-tighten any loose components.

### TROUBLESHOOTING

If you encounter any issues with your SmallRig Mini NATO Side Handle 4840, consider the following common solutions:






- **Handle feels loose:** Ensure the locking lever on the NATO clamp is fully tightened. If the vertical adjustment is loose, use the magnetic wrench to tighten the screws on the handle adapter.
- **Difficulty attaching to cage:** Verify that your camera cage has a compatible NATO rail. If not, a separate SmallRig NATO rail is required. Ensure the handle adapter is correctly aligned with the rail.
- **Accessories not fitting:** Check that your accessories have standard 1/4"-20 threads or cold shoe compatibility.

### WARRANTY AND SUPPORT

For warranty information, technical support, or further assistance with your SmallRig Mini NATO Side Handle 4840, please contact SmallRig customer service or visit the official SmallRig website. Keep your purchase receipt as proof of purchase for any warranty claims.

You can also visit the [Official SMALLRIG Store on Amazon](#) for more products and support resources.

### Related Documents - 4840

<div><div>SmallRig</div><div></div><div><div>Lightweight mini Side Handle Kit</div><div>轻量迷你侧手柄套件</div><div>Operating Instruction / 操作指南</div></div></div>	<p><a href="#">SmallRig Lightweight Mini Side Handle Kit - Operating Instructions</a></p> <p>Operating instructions for the SmallRig Lightweight Mini Side Handle Kit, detailing its components, interface, installation steps, and specifications.</p>
<div><div>SmallRig</div><div></div><div><div>Monitor Mount for DJI RS Series</div><div>监视器支架 (适用于大疆 RS 系列)</div><div>Operating Instruction / 操作指南</div></div></div>	<p><a href="#">SmallRig Monitor Mount for DJI RS Series - Operating Instructions</a></p> <p>Official operating instructions and specifications for the SmallRig Monitor Mount designed for DJI RS Series gimbals. Learn about product features, dimensions, materials, and included accessories.</p>
<div><div>SmallRig</div><div></div><div><div>Side Handle Extension Adapter Part with NATO Clamp</div><div>侧手柄延长适配器 (带锁紧口)</div><div>Operating Instruction / 操作指南</div></div></div>	<p><a href="#">SmallRig Side Handle Extension Adapter Part with NATO Clamp - Operating Instructions</a></p> <p>Official operating instructions and specifications for the SmallRig Side Handle Extension Adapter Part with NATO Clamp (Model 4458), detailing its features, compatibility, and installation.</p>
<div><div>SmallRig</div><div></div><div><div>NATO Top Handle (Lite)</div></div></div>	<p><a href="#">SmallRig NATO Top Handle (Lite) Operating Instructions</a></p> <p>Operating instructions for the SmallRig NATO Top Handle (Lite), detailing its features, compatibility, safety guidelines, and specifications for the Sony FX30/FX3 XLR Handle.</p>
<div><div>SmallRig</div><div></div><div><div>Universal Tripod Dolly</div></div></div>	<p><a href="#">SmallRig Universal Tripod Dolly CCP2646 Camera Cage - Operating Instructions</a></p> <p>Operating instructions and specifications for the SmallRig Universal Tripod Dolly CCP2646 camera cage, designed for Panasonic Lumix GH5, GH5 II, and GH5S cameras. Features include protection, accessory mounting, and safety guidelines.</p>
<div><div>SmallRig</div><div></div><div><div>Mini Side Handle with 14-20 Screws Kit</div></div></div>	<p><a href="#">SmallRig Mini Side Handle with 14-20 Screws Kit - Operating Instructions and Specifications</a></p> <p>Operating instructions and specifications for the SmallRig Mini Side Handle (2916), a lightweight and ergonomic accessory for mirrorless and digital cameras, featuring 1/4"-20 screw mounts, cold shoe, and strap eyelet. Includes safety guidelines, compatibility, and technical details.</p>

