

manuals.plus /

- › [hakimonoe](#) /
- › [Hakimonoe 6B17 USB 3.0 WiFi Adapter User Manual](#)

hakimonoe 6B17

Hakimonoe 6B17 USB 3.0 WiFi Adapter User Manual

Model: 6B17 | Brand: hakimonoe

INTRODUCTION

The Hakimonoe 6B17 USB 3.0 WiFi Adapter is designed to provide high-speed, stable wireless connectivity for your desktop PC or laptop. Featuring dual-band support (2.4GHz and 5GHz) and a USB 3.0 interface, it significantly enhances your internet experience for activities such as browsing, streaming, and gaming. Its enhanced antenna design ensures wider coverage and a more reliable connection.



Image: Hakimonoe 6B17 AC1300Mbps WiFi USB 3.0 Adapter with its accompanying USB driver.

WHAT'S IN THE BOX

- 1 x 6B17 AC1300Mbps WiFi USB 3.0 Adapter
- 1 x USB Driver
- 1 x User Manual

SETUP AND INSTALLATION

Follow these steps to install your Hakimonoe 6B17 WiFi Adapter:

1. **For Windows 11/10:** The adapter is designed for plug-and-play functionality. Simply insert the adapter into an available USB 3.0 port on your computer. Your system should automatically detect and install the necessary drivers, allowing you to connect to a wireless network immediately.
2. **For Windows 8.1/8/7/XP/Vista:** Driver installation is required. Insert the included USB driver disk into your computer's USB port. Follow the on-screen instructions to install the driver. Once the driver is installed, plug the WiFi adapter into a USB 3.0 port.
3. **Driver Troubleshooting (if adapter not recognized):**
 - Try plugging the adapter into a different USB 3.0 port on your PC.
 - Press 'Win+X' to open Device Manager and disable your PC's built-in WiFi network device.
 - Unplug the adapter, then plug in the USB Driver to install the driver manually. After installation, plug the adapter back in.
 - In Device Manager, right-click on 'Realtek 8812BU Wireless...' and choose 'Update Driver'.

Plug and Play or Driver from USB Disk

Plug n Play for Windows 11/10



Driver Required for
Windows 8.1/8/7/XP/Vista

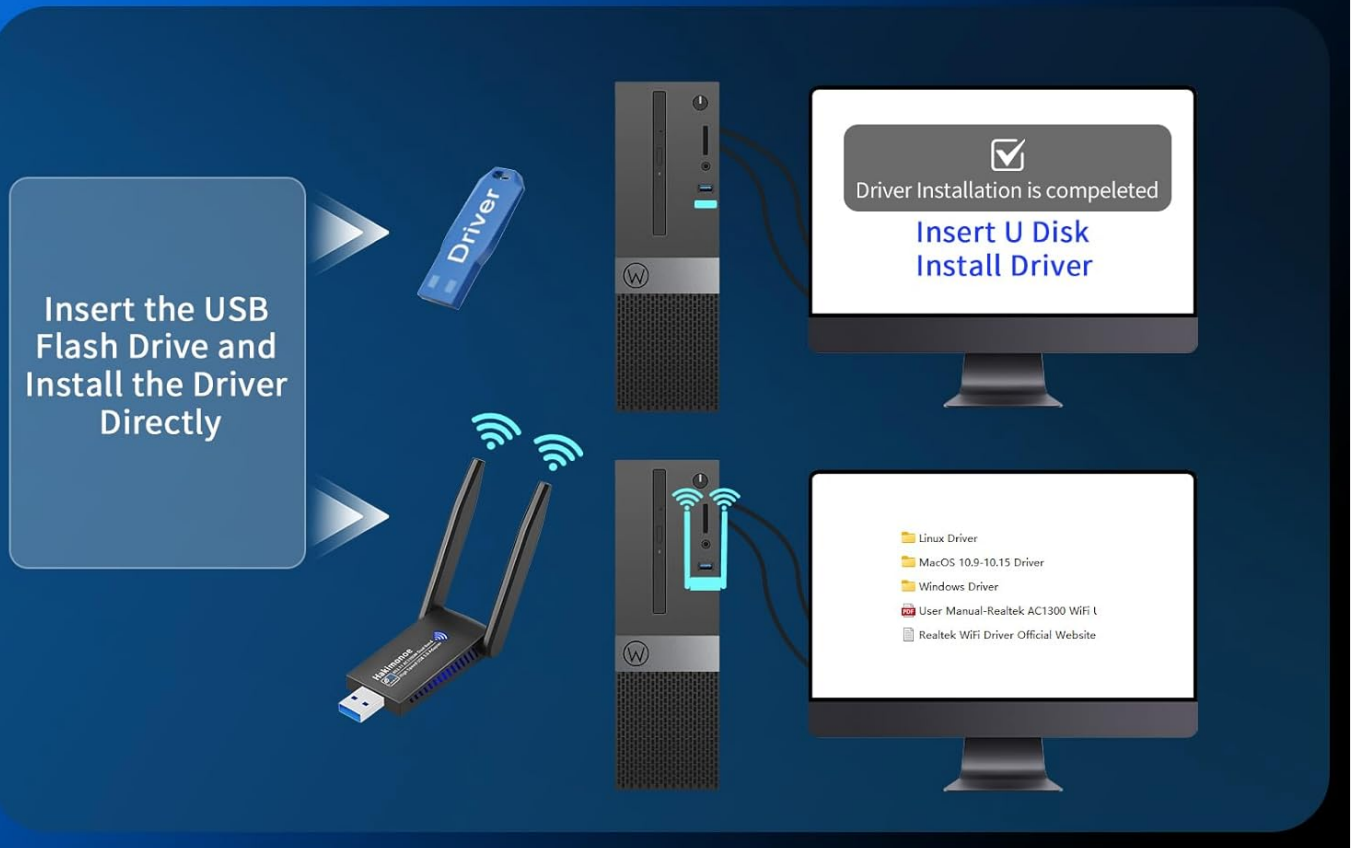


Image: Installation guide illustrating plug-and-play for Windows 10/11 and driver installation for other Windows OS versions.

Easy Setup, Wide Compability



Plug & Play



Install the driver through USB driver that is included in the package.
(Not from the annoying CD or website link.)



Image: Visual representation of the adapter's easy setup and broad compatibility with Windows operating systems.

Dual-Band Performance

The 6B17 adapter supports dual-band frequencies, 2.4GHz and 5GHz, providing flexible connectivity options. The 5GHz band offers speeds up to 867Mbps, ideal for high-bandwidth activities like 4K streaming and online gaming, while the 2.4GHz band provides speeds up to 400Mbps, suitable for general web browsing and email.

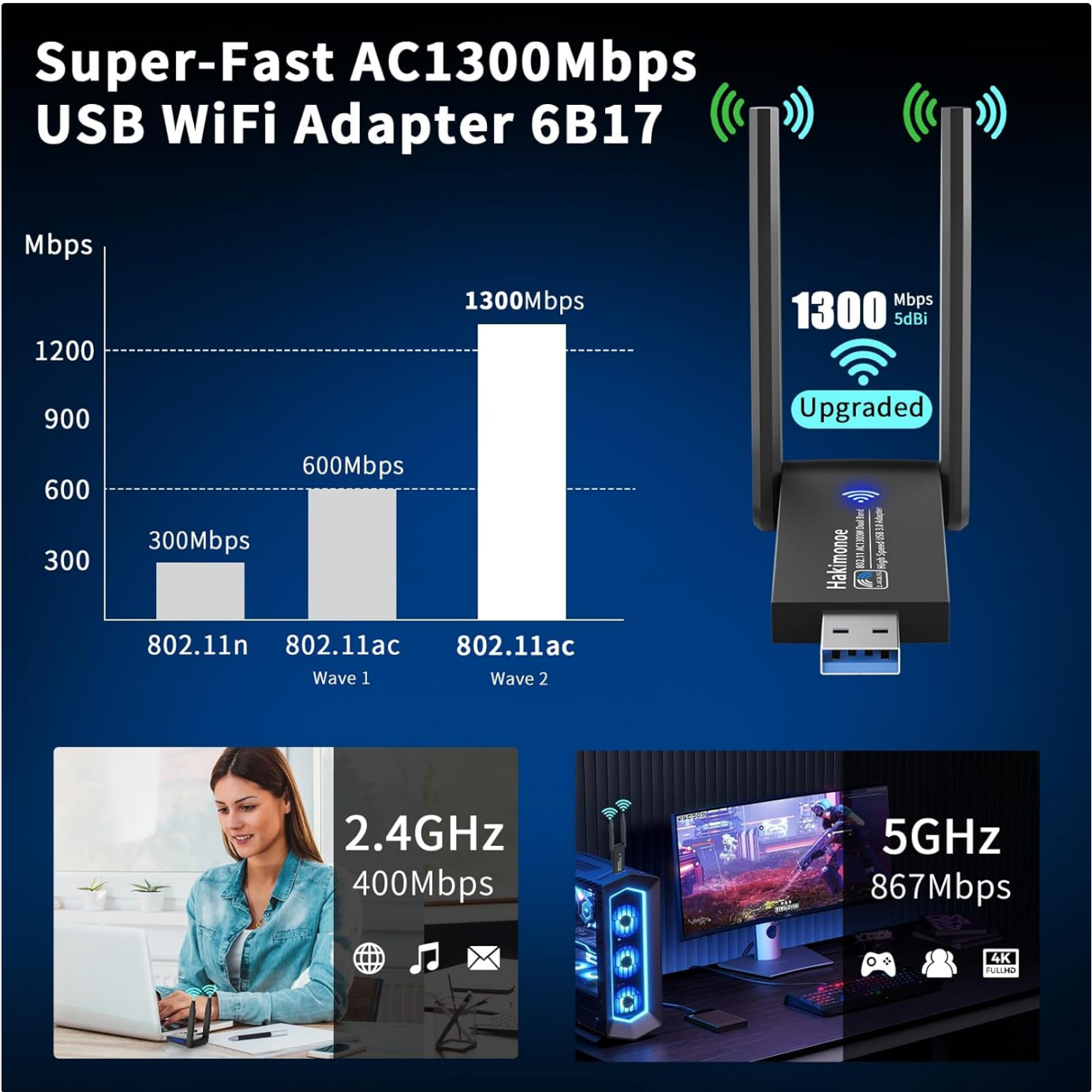


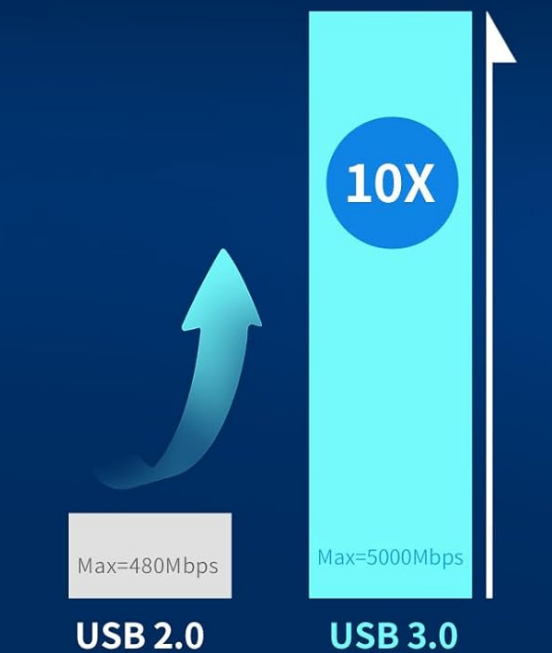
Image: Speed comparison chart highlighting the performance benefits of AC1300Mbps dual-band WiFi.

USB 3.0 Advantage

Utilizing a USB 3.0 interface, this adapter ensures maximum data transfer speeds, up to 5000Mbps, which is 10 times faster than USB 2.0. This is crucial for achieving the full potential of the 5GHz band's high speeds.

USB 3.0 for Superior Data Speeds

USB 3.0 makes the WiFi Adapter Faster and Smoother for HD Streaming, Online Gaming and Large Files Download.



(Also Backwards Compatible with USB2.0)



Notes: Recommend to plug the adapter into the USB 3.0 port of your PC back.

Image: Illustration demonstrating the significant speed advantage of USB 3.0 over USB 2.0 for optimal WiFi performance.

Adjustable High-Gain Antennas

The adapter features two high-gain 5dBi antennas that are adjustable and multi-directional. This design improves signal reception capabilities and, combined with beam-forming technology, intelligently focuses WiFi signals towards your connected devices, providing a more reliable and uninterrupted experience throughout your home or office.

Wider Coverage and More Stable

Featured 5dBi High-Gain Dual External Antenna, Ensure Stronger Signal to Enjoy Stable WIFI Connection Throughout Your Home or Office.



Image: Depiction of the adapter providing wider and more stable WiFi coverage across various rooms.

Adjustable Directional Antenna

With 180° Rotations to Provide Flexibility for Maximized Performance Where You Are.



Unique Design with Additional Cooling Function

With Louver Hole on Both Sides, More Durable and Long-Lasting



Image: Details on the adjustable directional antenna with 180-degree rotation and the unique design with additional cooling function.

Wireless Security

The adapter supports various wireless security protocols including WPA/WPA2/WEP/802.1X/WMM to ensure your network connection is secure and protected from unauthorized access.

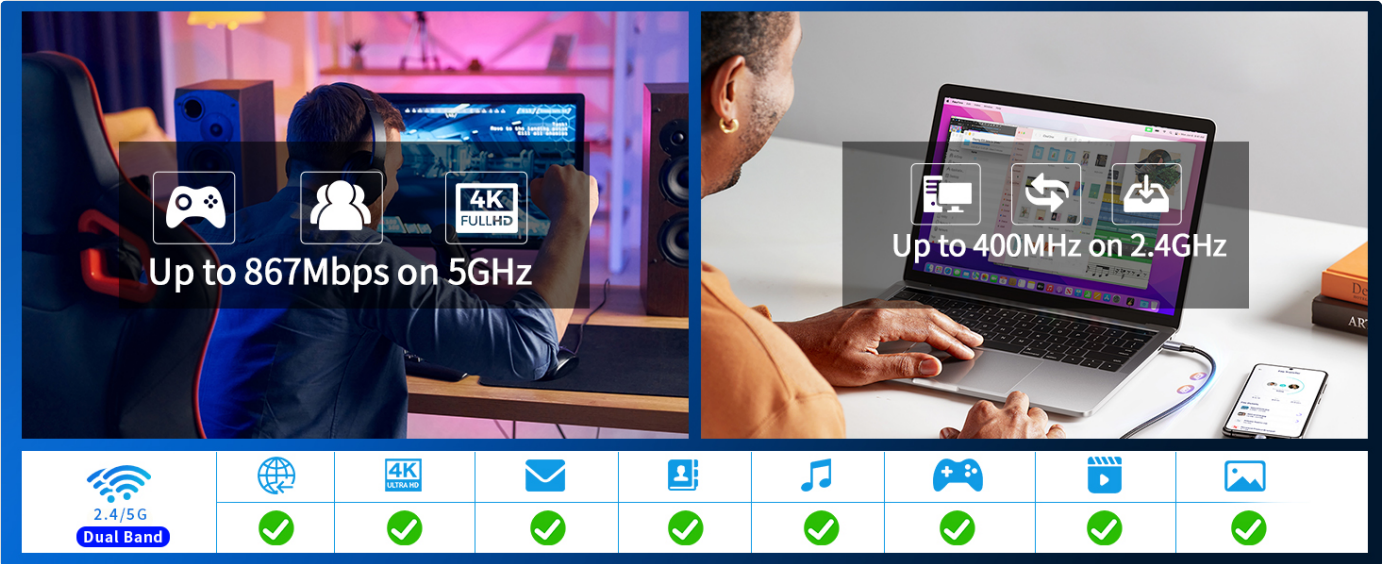


Image: Examples of how the adapter enhances online experiences, from gaming to 4K content.

SPECIFICATIONS

Feature	Detail
Product Dimensions	5.5 x 1.18 x 0.27 inches
Item Weight	0.635 ounces (18 Grams)
Item Model Number	6B17
Brand	hakimonoe
Hardware Interface	USB, USB 3.0, USB 2.0, 802.11 ac/b/g/n
Color	Black
Compatible Devices	Desktop, Laptop, PC with Windows 11/10/8.1/8/7/XP/Vista OS
Data Link Protocol	IEEE 802.11ac, USB
Data Transfer Rate	1300 Megabits Per Second
Manufacturer	SHEN ZHEN XIN HUA TIAN TECHNOLOGY CO., LTD
Country of Origin	China



Image: Various views and dimensions of the Hakimonoe 6B17 WiFi Adapter.

TROUBLESHOOTING

If your WiFi USB Adapter is not recognized or you encounter connectivity issues, please follow these steps:

1. **Change USB Port:** Try plugging the adapter into a different USB 3.0 port on your PC.
2. **Disable Built-in WiFi:** Press 'Win+X' on your keyboard to open the Quick Link menu, then select 'Device Manager'. Locate and disable your PC's built-in WiFi network device.
3. **Manual Driver Installation:** Unplug the adapter. Insert the USB Driver (included in the package) into a USB port and install the driver directly from it. After successful driver installation, plug the WiFi adapter back into your computer.
4. **Update Driver via Device Manager:** Open 'Device Manager', locate the 'Realtek 8812BU Wireless LAN 802.11ac USB NIC' (or similar), right-click on it, and choose 'Update Driver'.
5. **Consult User Manual / Contact Support:** If the issue persists, refer to the detailed user manual on the USB disk or

contact our customer support for further assistance.

If the WiFi USB Adapter can't recognised, Please Check The Steps:

- A1** Please change to PC back another USB 3.0 port to try it.
- A2** Please press "Win+x" into your PC "Device Manager" to disable the PC's built-in wifi network devices to try it.
- A3** Unplug the adapter and plug the USB Driver to install the driver manually, then plug the adapter again to try it.
- A4** Open the PC "Device Manager" and right-click the "Realtek 8812BU Wireless..." to choose "Update Driver".
- A5** If still not solved the issue, Please read the user manual in the USB disk or get back to us.



Image: Visual guide for common troubleshooting steps if the WiFi adapter is not recognized.

WARRANTY AND SUPPORT

Hakimonoe is committed to providing excellent customer service. This product comes with a **12-Month Warranty Commitment** and **Life-time Technical Support**.

If you have any questions regarding driver installation, product usage, or require technical assistance, please do not hesitate to contact our reliable customer support team via Amazon Message. We aim to reply to all inquiries quickly, typically within 24 hours.