

hakimonoe BT548

Hakimonoe BT548 Long Range Bluetooth 5.4 Adapter User Manual

Model: BT548

1. INTRODUCTION

The Hakimonoe BT548 is a long-range USB Bluetooth 5.4 adapter designed to add advanced Bluetooth capabilities to your non-Bluetooth enabled PC, laptop, or desktop computer. This adapter allows seamless wireless connection with various Bluetooth devices such as headphones, headsets, mice, keyboards, printers, and tablets, providing stereo audio, clear calls, and efficient data transfer.

Equipped with the latest Realtek Bluetooth 5.4 chipset, the BT548 supports dual mode (BR/EDR + BLE), ensuring improved connection stability, faster data transfer speeds (up to 3 Mbps), reduced 2.4GHz signal interference, and low power consumption. It is backward compatible with older Bluetooth versions (5.3/5.1/5.0/4.2/4.0/3.0/2.1/2.0/1.1).

Featuring a 5dBi detachable antenna and Class 1 Radio RF technology, the BT548 offers an extended transmission range of up to 492ft (150m) in open areas, minimizing distance limitations for your Bluetooth connections. Please note that walls, physical obstructions, and wireless interference can affect the operational range.

The adapter supports simultaneous connection of up to 7 different types of devices, allowing you to use multiple peripherals without interference. For audio devices of the same type (e.g., multiple headphones), only one will be able to play music at a time.



Image 1.1: The Hakimonoe BT548 Bluetooth 5.4 USB Adapter with its detachable 5dBi antenna.

2. PACKAGE CONTENTS

Please verify that all items are present in your package:

- 1 x Hakimonoe BT548 Bluetooth 5.4 USB Adapter

- 1 x User Manual (this document)

3. SETUP AND INSTALLATION

3.1 System Requirements

- Operating Systems: Windows 11, Windows 10, Windows 8.1, Windows 7.
- USB Port: Available USB 2.0 or 3.0 port.
- Internet Connection: Required for Windows 8.1/10/11 for automatic driver installation.

Important Compatibility Notes:

- Not compatible with Mac OS, TV, Car-Stereo, Windows 8, Windows XP, or Windows Vista.
- Not for direct use on game consoles (e.g., Xbox, PlayStation, Nintendo Switch); only for game controllers used on PC.



Image 3.1: The Hakimonoe BT548 adapter supports Windows 11, 10, 8.1 (Plug and Play) and Windows 7 (driver required).

3.2 Installation Steps

1. **Disable Existing Bluetooth (if applicable):** If your computer has built-in Bluetooth, it is crucial to disable it before installing the BT548 adapter to prevent conflicts.
 - Right-click "This PC" or press "Win+X" and select "Manage".
 - Navigate to "Device Manager".
 - Expand the "Bluetooth" section.
 - Right-click on your PC's built-in Bluetooth device (e.g., "Intel(R) Wireless Bluetooth") and select "Disable device".
2. **Insert the Adapter:** Plug the Hakimonoe BT548 USB adapter into an available USB port on your PC. Ensure the antenna is securely attached and adjusted for optimal signal reception.
3. **Driver Installation:**
 - **For Windows 11/10/8.1:** The adapter is typically plug-and-play. Windows should automatically detect and install the necessary drivers if your computer is connected to the internet.
 - **For Windows 7:** A driver is required. You can download it from the following link <https://bit.ly/3R7oyaC>. Follow the on-screen instructions to install the driver.
4. **Verification:** After installation, check Device Manager under the "Bluetooth" section. You should see "Realtek Bluetooth 5.4 Adapter" listed, indicating successful installation.

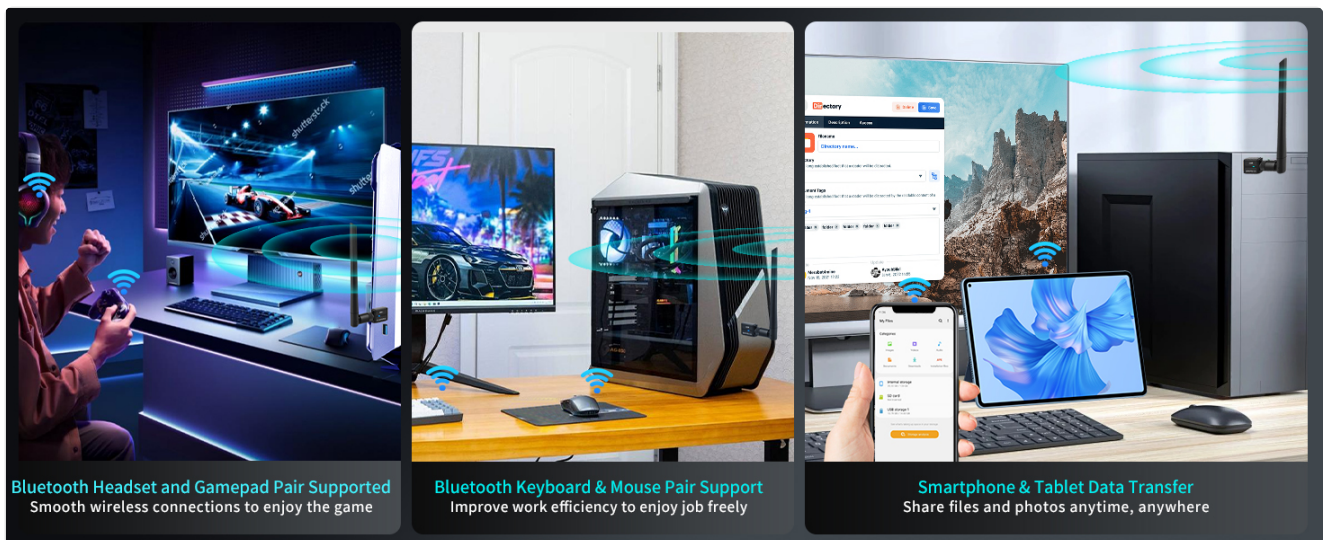


Image 3.2: Visual guide for disabling existing Bluetooth and verifying adapter installation in Device Manager.

4. OPERATING INSTRUCTIONS

4.1 Pairing Bluetooth Devices

Once the BT548 adapter is installed, your computer will have Bluetooth functionality. You can now pair your Bluetooth devices:

1. Ensure your Bluetooth device (headphones, mouse, keyboard, etc.) is in pairing mode. Refer to your device's manual for specific instructions.
2. On your Windows PC, go to **Settings > Bluetooth & devices** (or **Devices > Bluetooth & other devices** on older Windows versions).
3. Click **"Add device"** or **"Add Bluetooth or other device"**.
4. Select **"Bluetooth"** from the options.
5. Your computer will scan for nearby Bluetooth devices. Select your device from the list and follow any on-screen prompts to complete the pairing process.



Image 4.1: The BT548 adapter enables connection with various Bluetooth devices, supporting up to 7 simultaneous connections.

4.2 Multi-Device Connectivity

The BT548 adapter supports connecting up to 7 different types of Bluetooth devices simultaneously. This allows for a versatile wireless setup, such as using a Bluetooth keyboard, mouse, and headphones at the same time without interference.

Note: If you connect multiple audio devices of the same type (e.g., two pairs of Bluetooth headphones), only one will be able to play audio at any given moment.

4.3 Antenna Adjustment

The 5dBi detachable antenna can be rotated 90 degrees vertically and 360 degrees horizontally. Adjust the antenna's position to optimize signal strength and range, especially if you experience connection drops or reduced range.

Multi-Directional Rotatable Antenna Design

5dBi Enhanced, Longer Range, Stronger Signal, Better Anti-Interference

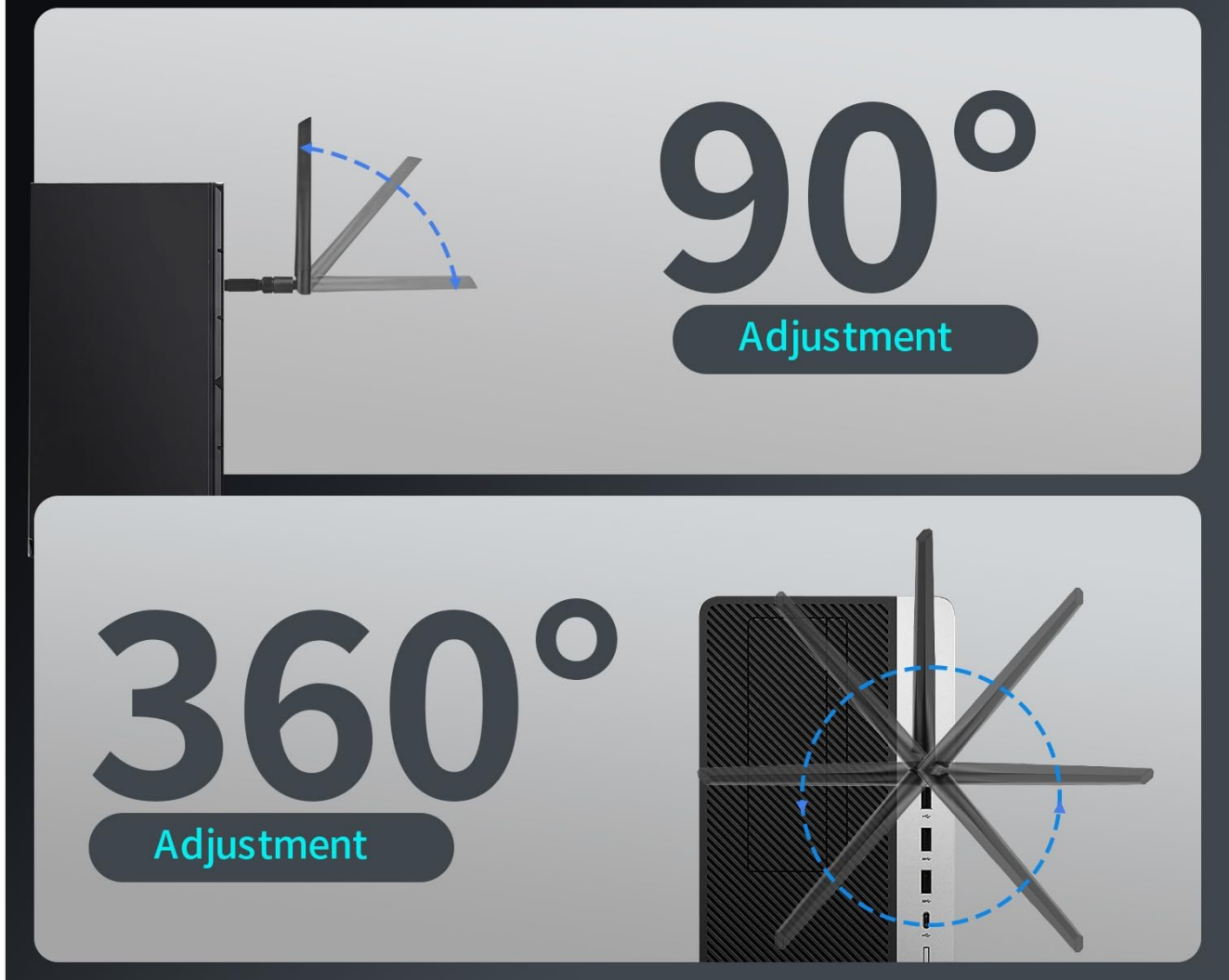


Image 4.2: The multi-directional rotatable antenna allows for flexible adjustment to enhance signal strength and coverage.

5. TROUBLESHOOTING

• Adapter Not Detected or Not Working:

- Ensure any built-in Bluetooth on your computer is disabled in Device Manager before inserting the BT548 adapter.
- Try plugging the adapter into a different USB port.
- For Windows 7, confirm that the correct driver has been installed.
- Restart your computer after installation.

• Poor Range or Disconnections:

- Adjust the antenna's position for optimal signal.
- Ensure there are no significant physical obstructions (walls, large metal objects) between the adapter and your Bluetooth device.
- Minimize wireless interference from other 2.4GHz devices (Wi-Fi routers, cordless phones).
- Ensure the adapter is plugged into a USB port that is not obstructed or too close to other devices

causing interference.

- **Device Not Pairing:**

- Ensure your device is in pairing mode.
- Check if your device is compatible with Bluetooth 5.4 (it is backward compatible, but some very old devices might have issues).
- Verify that the BT548 adapter is correctly installed and recognized by your system.
- Remove any previous pairings of the device from your computer's Bluetooth settings and try again.

- **Linux Compatibility:** While not officially advertised as Linux compatible, many users have reported successful operation on various Linux distributions. If you encounter issues, ensure your Linux kernel and Bluetooth stack (e.g., BlueZ) are up to date.

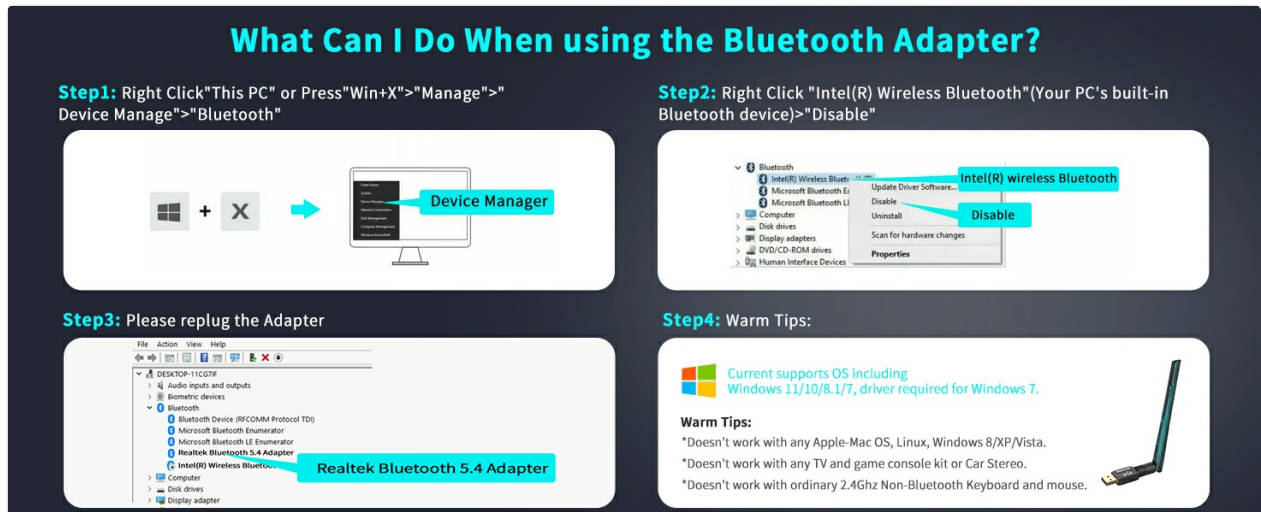


Image 5.1: User experiences indicate the BT548 adapter can function effectively with Linux systems.

6. SPECIFICATIONS

Feature	Description
Model Number	BT548
Bluetooth Version	5.4 (Backward compatible with 5.3/5.1/5.0/4.2/4.0/3.0/2.1/2.0/1.1)
Chipset	Realtek Bluetooth 5.4
Antenna	5dBi Detachable, Multi-Directional Rotatable
Transmission Range	Up to 492ft (150m) in open areas (Class 1 Radio RF technology)
Data Transfer Rate	Up to 3 Mbps
Hardware Interface	USB 2.0, USB 3.0
Compatible Operating Systems	Windows 11, 10, 8.1, 7 (Linux with community support)
Product Dimensions	7.09 x 0.79 x 0.28 inches (180 x 20 x 7 mm)
Item Weight	0.635 ounces (18 grams)



Image 6.1: Detailed dimensions of the Hakimonoe BT548 Bluetooth adapter.




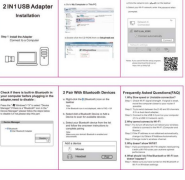

7. SUPPORT

For any questions regarding driver installation, product usage, or troubleshooting not covered in this manual, please contact Hakimonoe customer service. You can typically reach support via the Amazon Message system, and responses are usually provided within 24 hours.



Image 7.1: Contact customer support for assistance.

Related Documents - BT548

	<p>Bluetooth 5.4 Adapter Installation Guide</p> <p>A guide to installing the Bluetooth 5.4 adapter for Windows operating systems, including plug and play instructions and manual driver installation.</p>
	<p>AX913B Wi-Fi 6 Bluetooth 5.4 Adapter Troubleshooting Guide</p> <p>A comprehensive guide to troubleshooting common issues with the AX913B Wi-Fi 6 and Bluetooth 5.4 USB adapter for Windows PCs. Covers disabling built-in Bluetooth, resolving yellow errors on the adapter, Wi-Fi connectivity problems, slow speeds, connection issues, and Bluetooth pairing.</p>
	<p>Hakimonoe AX918B Wi-Fi 6 Bluetooth 5.4 USB Adapter Troubleshooting Guide</p> <p>A comprehensive troubleshooting guide for the Hakimonoe AX918B 2-in-1 Wi-Fi 6 and Bluetooth 5.4 USB adapter, covering common issues with Wi-Fi and Bluetooth connectivity, OS compatibility, and device pairing.</p>
	<p>Hakimonoe AX900Mbps Wi-Fi 6 Bluetooth 5.4 USB Adapter: User Guide & Setup</p> <p>Comprehensive user guide for the Hakimonoe 2-in-1 Wi-Fi 6 and Bluetooth 5.4 USB adapter. Learn about installation, features, and specifications for Windows 10/11 PCs and laptops.</p>
	<p>Realtek Bluetooth Adapter Troubleshooting Guide</p> <p>A comprehensive guide to troubleshooting common issues with Realtek Bluetooth 5.3 and 5.4 adapters for PC, including disabling built-in Bluetooth, resolving yellow errors, and connecting devices.</p>