

## topzee K- AFT11001-UL

# TOPZEE 11-QT Large Air Fryer

Model: K-AFT11001-UL

## 1. IMPORTANT SAFETY INFORMATION

---

Please read all instructions carefully before using this appliance to ensure safe and efficient operation. Retain this manual for future reference.

- Always place the air fryer on a stable, heat-resistant surface, away from walls or other appliances to allow for proper air circulation.
- Do not immerse the main unit, cord, or plug in water or other liquids.
- Ensure the voltage indicated on the appliance corresponds to your local mains voltage before connecting.
- Close supervision is necessary when any appliance is used by or near children.
- Do not operate the appliance if the plug, power cord, or the appliance itself is damaged.
- Unplug the air fryer from the outlet when not in use and before cleaning. Allow it to cool completely before handling.
- Do not block any ventilation openings.
- Avoid touching hot surfaces. Use handles or knobs.
- Do not place anything on top of the air fryer.

## 2. PRODUCT OVERVIEW

---

The TOPZEE 11-QT Large Air Fryer is designed for versatile cooking with its flexible basket system and multiple functions. It features an intuitive touch control panel for easy operation.



Image: The TOPZEE 11-Qt Large Air Fryer, showcasing its sleek design and the dual basket configuration with a divider.

### Components:

- Main Unit with Control Panel
- 11-Qt Cooking Basket
- Removable Divider
- Crisper Plate

## 3. SETUP AND FIRST USE

### Unboxing:

1. Carefully remove all packaging materials from the air fryer and its accessories.
2. Inspect the appliance for any signs of damage. Do not use if damaged.
3. Remove any stickers or labels.

### Before First Use:

1. Wash the cooking basket, removable divider, and crisper plate thoroughly with warm, soapy water. Rinse and dry completely. These parts are dishwasher safe.
2. Wipe the exterior of the main unit with a damp cloth. Do not immerse the main unit in water.
3. Place the air fryer on a flat, stable, heat-resistant surface. Ensure there is at least 6 inches of clear space around the back and sides for proper ventilation.
4. It is recommended to run the air fryer empty for about 10-15 minutes on a high temperature (e.g., 400°F)

during its first use to eliminate any manufacturing odors. A slight odor may be present, which is normal and will dissipate.

## 4. OPERATING INSTRUCTIONS

### Control Panel:

The air fryer features a touch control panel. Use the intuitive icons to select functions, adjust temperature, and set time.

### Flexible Basket Design:

The 11-QT basket offers versatility for various cooking needs.

- **11-QT Full Basket:** For large family meals, remove the divider to utilize the full 11-quart capacity. This is ideal for cooking whole chickens, large roasts, or significant quantities of food.



Image: The air fryer basket configured for its full 11-QT capacity, suitable for larger food items like a roast.

- **Dual 5.5-QT Baskets:** Insert the removable divider to create two independent 5.5-quart cooking zones. This allows you to cook different dishes simultaneously without mixing flavors.



## 11-QT Full Basket

Remove the divider for large family meals in XL capacity

Image: The air fryer basket with the divider inserted, showing two distinct compartments for cooking different foods.

### Dual Cooking Modes:

When using the divider, you can leverage advanced cooking synchronization features:

- **Cook & Serve Together (Smart Finish):** This feature allows you to cook two different foods at unique temperatures and times, ensuring they both finish cooking simultaneously. Select this mode and set the desired temperature and time for each basket. The air fryer will automatically adjust the cooking start times so both items are ready at the same moment.

# SYNC for Both Baskets

The SYNC Setting enables you to cook two baskets with identical cooking settings quickly



Image: The air fryer with two baskets, illustrating how different foods can be cooked to finish at the same time.

- **Sync Cook Mode:** Easily synchronize settings for both 5.5-quart baskets with one button. This mode is ideal for cooking 11 quarts of food at the same temperature, time, and function across both compartments.

# 8-in-1 Functions

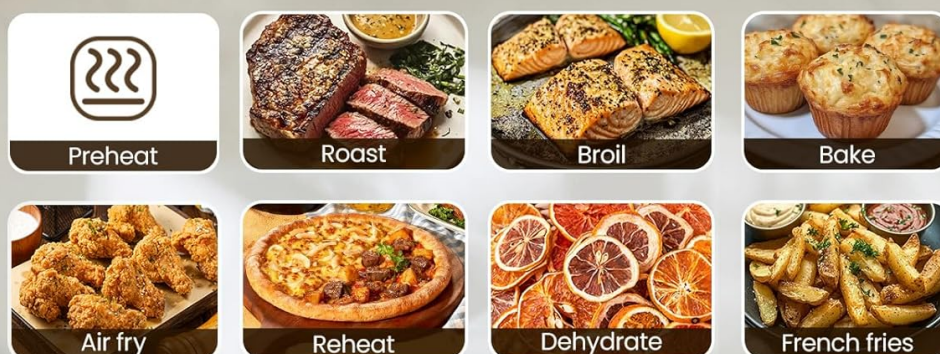


Image: The air fryer showing the 'SYNC' function on its display, indicating both baskets are set to identical cooking parameters.

## 8-in-1 Versatile Cooking Functions:

The TOPZEE Air Fryer offers 8 preset cooking modes for various dishes:

- **Preheat:** Warms the air fryer to the desired temperature before adding food for optimal cooking results.
- **Air Fry:** Circulates hot air to cook food with little to no oil, achieving a crispy texture similar to deep-frying.
- **Roast:** Ideal for cooking meats, vegetables, and other dishes that require even browning and tender interiors.
- **Broil:** Uses direct top heat for quick cooking and browning, perfect for melting cheese or crisping surfaces.
- **Bake:** Suitable for preparing cakes, pastries, and other baked goods.
- **Reheat:** Warms up leftovers while maintaining their texture and flavor.
- **Dehydrate:** Removes moisture from food at low temperatures, preserving fruits, vegetables, and meats.
- **French Fries:** Optimized setting for cooking crispy and delicious French fries.

# Fast and Oil Free

Air fry fast and with little-to-no oil for guilt-free deep-fried flavor



Image: A visual representation of the 8 distinct cooking functions available on the TOPZEE Air Fryer, including Preheat, Roast, Broil, Bake, Air Fry, Reheat, Dehydrate, and French Fries.

## Temperature and Time Control:

The air fryer offers a wide temperature range from 90°F to 400°F, allowing precise cooking for various foods. The cooking time can be set from 1 minute to 24 hours, depending on the selected function.

## Shake Reminder:

For certain recipes, the air fryer may prompt a 'Shake Reminder' during the cooking cycle. This indicates that food should be shaken or flipped for even cooking and browning. Open the basket, shake or flip the food, and then reinsert the basket to resume cooking.

## 5. MAINTENANCE AND CLEANING

Regular cleaning ensures the longevity and optimal performance of your air fryer.

- **Always unplug the air fryer** and allow it to cool completely before cleaning.
- **Basket, Divider, and Crisper Plate:** These components are non-stick and dishwasher safe. For manual

cleaning, wash with warm, soapy water and a non-abrasive sponge. Avoid metal utensils or abrasive cleaners that can damage the non-stick coating.

- **Main Unit:** Wipe the exterior with a damp cloth. Never immerse the main unit in water or any other liquid.
- **Interior:** If food residue is stuck to the interior, wipe with a damp cloth and mild detergent.
- Ensure all parts are completely dry before storing or next use.

## 6. TROUBLESHOOTING

If you encounter issues with your air fryer, refer to the following common problems and solutions:

Problem	Possible Cause	Solution
Air fryer does not turn on.	Not plugged in; power outlet issue; main unit damage.	Ensure the power cord is securely plugged into a working outlet. Check your circuit breaker. If still not working, contact customer support.
Food is not cooked evenly.	Overcrowding the basket; not shaking/flipping food.	Cook in smaller batches. Shake or flip food halfway through cooking, especially for items like fries or chicken wings.
White smoke coming from the appliance.	Grease residue from previous use; high-fat food.	Clean the basket and crisper plate thoroughly after each use. For high-fat foods, consider draining excess fat during cooking.
E4 Error Code.	Internal malfunction, possibly related to heating element or fan.	Unplug the air fryer for 10-15 minutes, then plug it back in and try again. If the error persists, contact customer support.
Appliance smells during first use.	Manufacturing residue burning off.	This is normal. Run the air fryer empty for 10-15 minutes at 400°F before first use. The smell will dissipate.

## 7. SPECIFICATIONS

Feature	Detail
Model Name	AFT11001-UL
Capacity	11 Quarts (can be split into 2 x 5.5 Quarts)
Product Dimensions (D x W x H)	15.7"D x 15.4"W x 12"H
Wattage	1700 Watts
Temperature Range	90°F to 400°F
Time Range	1 minute to 24 hours
Control Method	Touch
Material	Metal, Plastic
Nonstick Coating	Yes

Feature	Detail
Dishwasher Safe Parts	Basket, Crisper Plate, Divider
Item Weight	20.4 pounds



Image: Diagram illustrating the physical dimensions of the TOPZEE 11-Qt Large Air Fryer.

## 8. WARRANTY AND CUSTOMER SUPPORT

TOPZEE stands behind the quality of its products. For specific warranty details, please refer to the warranty card included with your purchase or visit the official TOPZEE website.

If you have any questions, concerns, or require technical assistance, please contact our customer support team:

Email: [Support@topzee.com](mailto:Support@topzee.com)



Image: Icon representing customer support with the email address 'Support@topzee.com'.