

[Manuals.plus](#) /

> [CreaCity](#) /

> CreaCity MCT-3 Linear Megacode Garage Door Opener Remote Instruction Manual

CreaCity MCT-3

CreaCity MCT-3 Linear Megacode Garage Door Opener Remote Instruction Manual

Model: MCT-3 | Brand: CreaCity

1. INTRODUCTION

Thank you for choosing the CreaCity MCT-3 Linear Megacode Garage Door Opener Remote. This remote is designed to provide secure and convenient access to your garage or gate. It utilizes 318MHz MegaCode technology for enhanced security and reliable operation. This manual will guide you through the installation, programming, and maintenance of your new remote control.

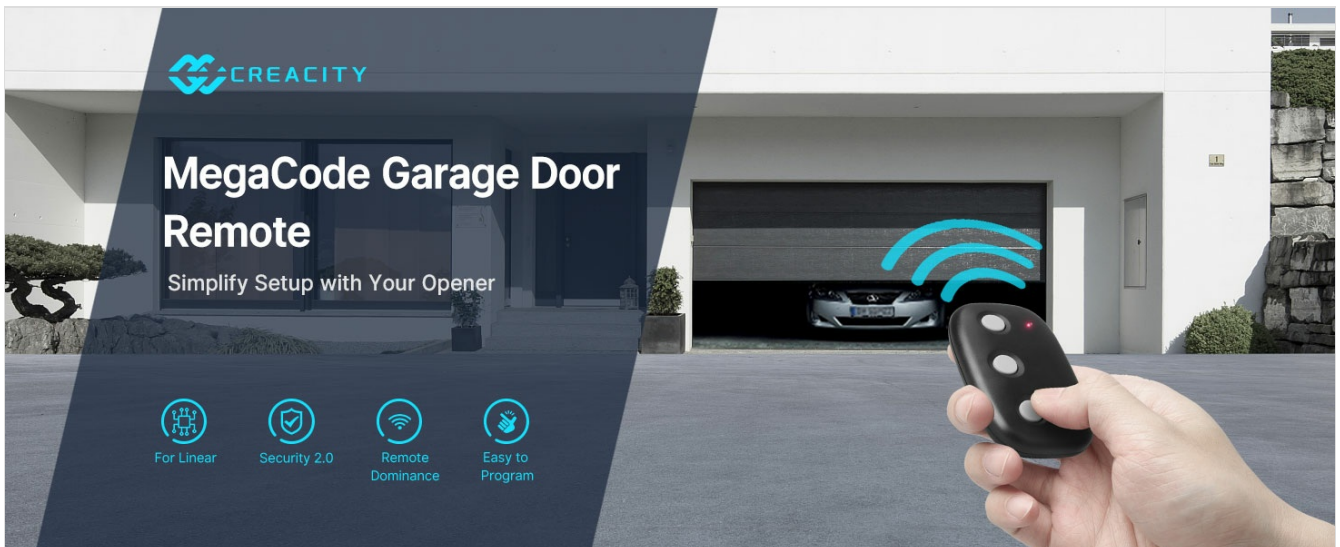


Image: Overview of the CreaCity MCT-3 remote highlighting its key features such as Security 2.0, remote dominance, ability to control up to 3 garage doors, ease of programming, compatibility with Linear systems, and lightweight design.

2. SAFETY INFORMATION

Please read and understand all safety instructions before operating your garage door opener remote. Improper use

can lead to serious injury or property damage.

- Keep remote controls out of reach of children.
- Only operate the garage door when it is in full view and free of obstructions.
- Never allow children to play with or near the garage door.
- Ensure the garage door is fully closed before leaving the premises.
- This remote is designed for use with garage door openers that have safety features in place to prevent injury.



Image: The CreaCity MCT-3 remote emphasizing its safe and reliable operation through MegaCode technology, which generates a new security code with each use to prevent code-grabbing.

3. COMPATIBILITY

The CreaCity MCT-3 remote is compatible with Linear MegaCode-enabled openers and receivers. Please verify your existing system's compatibility before programming.

Compatible Openers:

- LINEAR LD033
- LINEAR LD050
- LINEAR LS050
- LINEAR LC075
- LINEAR LDCO800
- LINEAR LSO50
- LINEAR LSO50-2T

Compatible Receivers:

- MDR
- MDR-U
- MDR-2
- MDRG
- MDRM

- MGR
- MGR-2
- SMDRG

Note: This remote is NOT compatible with dip switch garage door openers.

Compatibility Guide		
For Linear MegaCode Openers	For Linear MegaCode Receivers	Replacement for remote
LD033, LD050, LS050, LC075, LDC0800,LS050, LSO50-2T	MDR, MDR-U, MDR-2, MDRG, MDRM, MGR, MGR-2,SMDRG	MCT-3, DNT00089, ACT-31B, ACP00879, MCT-11, DNT00090, MCT-1

* For inquiries about compatibility with other models, please contact us. *

Image: A detailed compatibility table listing specific Linear MegaCode opener models (LD033, LD050, LS050, LC075, LDC0800, LSO50, LSO50-2T) and receiver models (MDR, MDR-U, MDR-2, MDRG, MDRM, MGR, MGR-2, SMDRG).

4. PACKAGE CONTENTS

Your package should contain the following items:

- 2 x CreaCity MCT-3 Garage Door Opener Remotes
- 2 x CR2032 Batteries (pre-installed)
- 2 x Visor Clips
- Instruction Manual

5. SETUP AND PROGRAMMING

Follow these steps to program your CreaCity MCT-3 remote to your Linear MegaCode garage door opener:

1. **Locate the Learn Button:** On your garage door opener motor unit, locate the 'LEARN' button. This button is typically found on the back or side panel of the motor unit. You may need a ladder to reach it.
2. **Activate Learn Mode:** Press and hold the 'LEARN' button on your garage door opener motor unit until the indicator light (often an LED) turns blue, then release it. The light may then go out, and a long LED will begin flashing purple, indicating it is in programming mode.
3. **Program the Remote:** Within 30 seconds of activating the learn mode, press and release your desired button on the CreaCity MCT-3 remote twice.
4. **Confirm Programming:** The indicator light on your garage door opener motor unit should flash and then turn off, confirming successful programming.

5. **Test the Remote:** Press the programmed button on your remote to ensure it operates the garage door correctly.

If programming is unsuccessful, repeat the steps. Ensure you are within range of the opener and that the opener's learn mode is active.

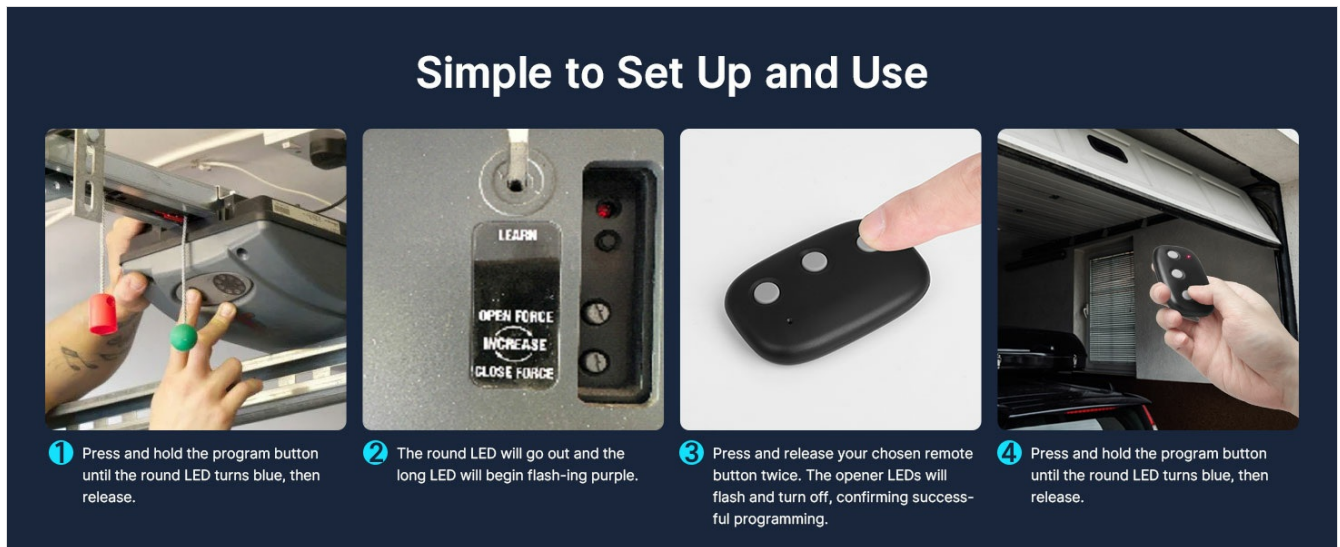


Image: A visual guide illustrating the four steps for programming the remote: locating and pressing the opener's program button, observing the opener's LED status, pressing the remote button, and confirming successful programming.

6. OPERATION

Once programmed, operating your CreaCity MCT-3 remote is straightforward:

- **Opening/Closing:** Press the programmed button on your remote once to open or close your garage door.
- **Stopping:** Press the button again while the door is in motion to stop it.
- **Multi-Channel Control:** The 3-button design allows you to control up to three different garage door openers or gate operators. Each button can be programmed independently.
- **Operating Range:** The remote operates effectively within a range of up to 160 feet from the garage door opener, providing convenient access.

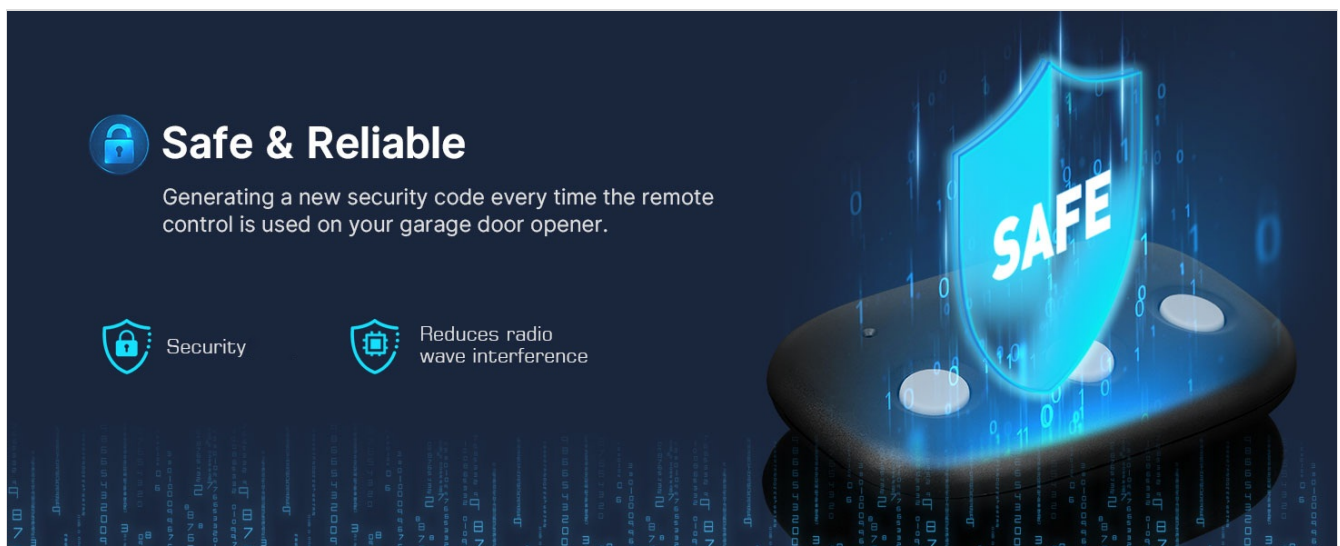


Image: The CreaCity MCT-3 remote demonstrating its ultra-remote range, allowing operation from up to 160 feet away from the garage door opener.

7. MAINTENANCE (BATTERY REPLACEMENT)

The CreaCity MCT-3 remote uses two CR2032 lithium metal batteries, which are included and pre-installed. When the remote's range decreases or the indicator light fails to illuminate, it's time to replace the batteries.

To Replace Batteries:

1. Carefully open the remote casing. This usually involves prying it open with a small flat-head screwdriver at the seam.
2. Remove the old CR2032 batteries.
3. Insert two new CR2032 batteries, ensuring the positive (+) side faces up.
4. Snap the remote casing back together securely.

Warning: Dispose of old batteries properly according to local regulations. Keep batteries out of reach of children.

8. TROUBLESHOOTING

If you encounter issues with your CreaCity MCT-3 remote, try the following troubleshooting steps:

Problem	Possible Cause	Solution
Remote does not operate the garage door.	Not programmed correctly.	Repeat the programming steps in Section 5.
Remote does not operate the garage door.	Dead or low batteries.	Replace the CR2032 batteries (refer to Section 7).
Remote range is reduced.	Low batteries or interference.	Replace batteries. Ensure no large metal objects or strong radio signals are blocking the remote's signal.
Remote is not compatible.	Opener/receiver is not a Linear MegaCode system or uses dip switches.	Verify your garage door opener/receiver model against the compatibility list in Section 3. This remote is not compatible with dip switch systems.

9. SPECIFICATIONS

- **Manufacturer:** CreaCity
- **Model Number:** MCT-3

- **Part Number:** MCT-3
- **Item Weight:** 2.89 ounces
- **Product Dimensions:** 4.7 x 3.9 x 0.7 inches
- **Color:** Black
- **Item Package Quantity:** 1 (Note: Product is sold as a 2-pack)
- **Included Components:** Garage door opener remote
- **Batteries:** 2 CR2032 batteries required (included)
- **Battery Cell Type:** Lithium Metal
- **Frequency:** 318MHz (MegaCode)
- **Operating Range:** Up to 160 feet

10. WARRANTY AND SUPPORT

For warranty information or technical support, please contact CreaCity customer service directly. Refer to the product packaging or the CreaCity official website for contact details.