

Junsun B0DJKWDV6M

Junsun 13.1 inch Car Radio Stereo User Manual

Model: B0DJKWDV6M (6GB+128GB)

For Chevy Silverado & GMC Sierra 2014-2018

1. PRODUCT OVERVIEW

The Junsun 13.1 inch Car Radio Stereo is designed for Chevy Silverado and GMC Sierra models from 2014 to 2018. This unit features a large touchscreen display, an 8-core processor, 6GB RAM, and 128GB of internal storage, providing a comprehensive infotainment solution for your vehicle.

Key features include:

- 13.1-inch High-Resolution Touchscreen Display
- 8-Core Processor with 6GB RAM and 128GB ROM for smooth performance
- Wireless CarPlay and Android Auto compatibility
- Integrated GPS Navigation with online and offline map support
- Bluetooth for hands-free calling and audio streaming
- Wi-Fi connectivity for app downloads and online services
- Retained Steering Wheel Control (SWC) functionality
- Built-in EQ for audio customization and FM/AM Radio
- Support for reverse camera input

Power Processor

Equip with 8core CPU, 6GB RAM 128GB ROM, Cortex A55 processor, up to 1.6GHz which ensures lightning fast loading time, efficient multitasking startup, and plenty of storage space.



6GB ROM



128GB RAM

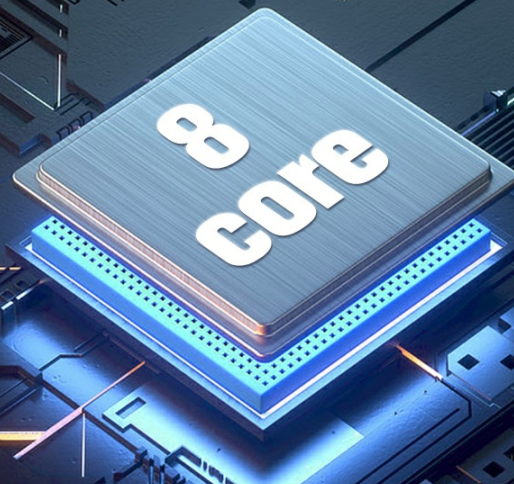


Image: Illustration of the powerful 8-core processor, 6GB RAM, and 128GB ROM for efficient performance.

2. PACKAGE CONTENTS

Before installation, verify that all components are present in the package:



Power cable



Microphone



GPS Module



USB cable



4G-Model



Can Bus



Reversing radar



RCA cable



Reversing line



USB cable



Screwdriver
Crowbar



Camera



Antenna adapter cable

Image: A visual representation of all items included in the product package, such as the main car radio unit, various cables (power, USB, RCA), GPS module, microphone, Can Bus, reversing radar, camera, and installation tools.

- Junsun 13.1 inch Car Radio Stereo Unit
- Power Cable
- Microphone
- GPS Module
- USB Cables (multiple)
- 4G-Model Antenna
- Can Bus Decoder
- Reversing Radar Cable
- RCA Cable
- Reversing Line
- Screwdriver Crowbar
- Backup Camera
- Antenna Adapter Cable

- User Manual (this document)

3. SETUP AND INSTALLATION

Installation of this car radio stereo requires technical knowledge and experience with automotive electronics. Professional installation is highly recommended to ensure proper functionality and avoid damage to your vehicle or the unit.

3.1 Wiring Connections

Carefully connect all cables according to your vehicle's wiring diagram and the provided instructions. Ensure all connections are secure to prevent intermittent issues.

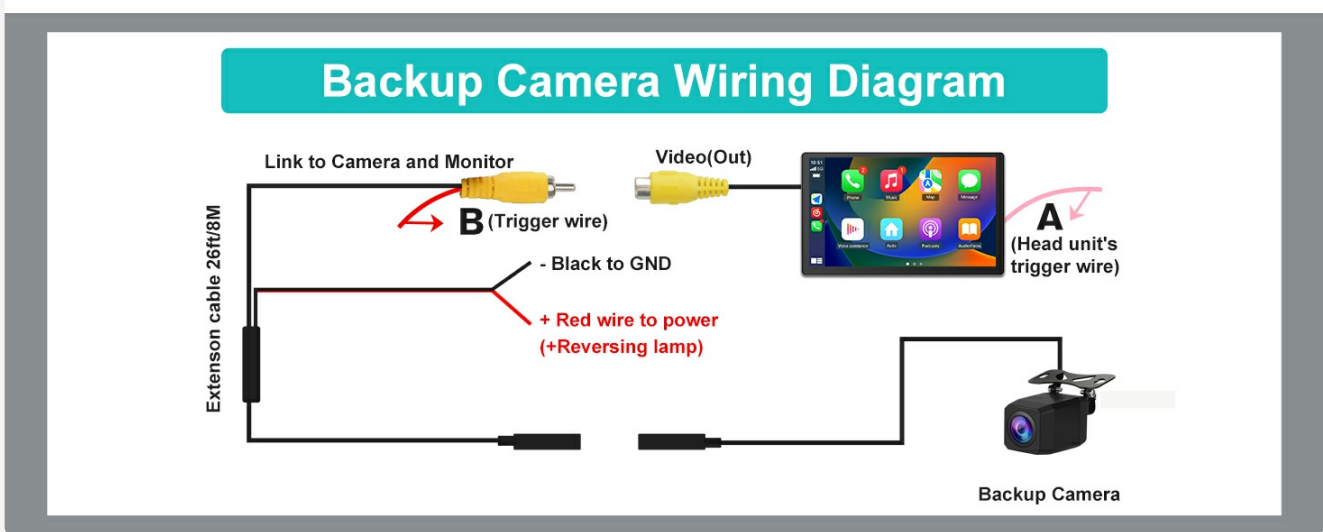


Image: A detailed diagram illustrating how to connect the backup camera to the car radio unit, including the video output, trigger wire, and power connections.

Important Note for Bose Sound Systems:

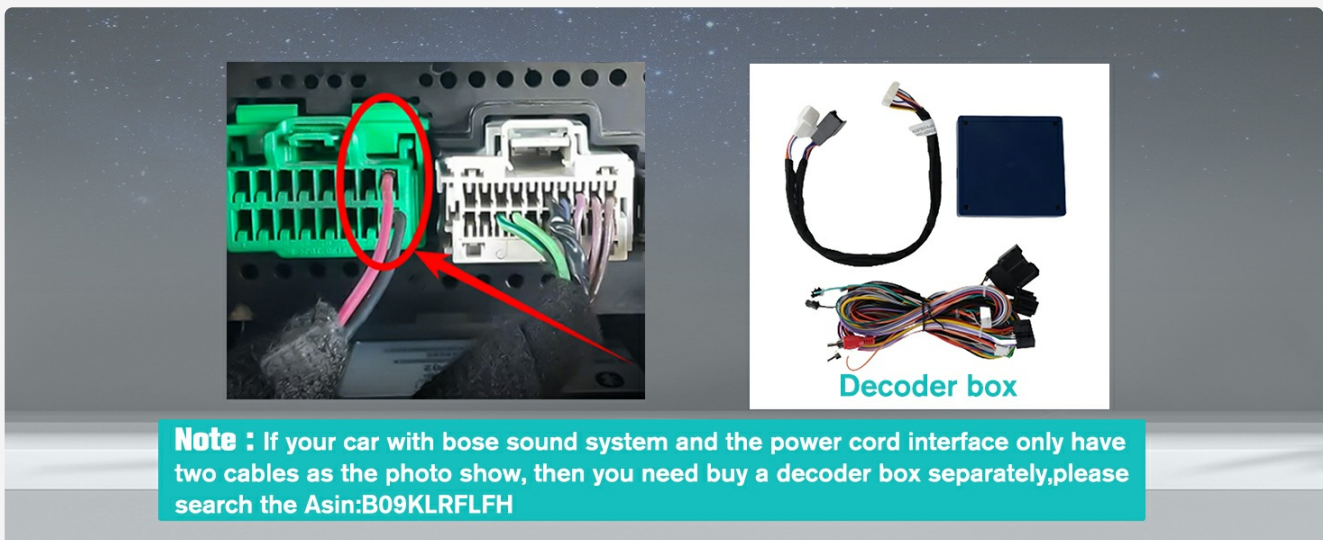


Image: A close-up of a wiring harness showing two specific cables and a separate decoder box. This image highlights the need for an additional decoder box if your vehicle has a Bose sound system and the power cord interface only has these two specific cables. If your vehicle is equipped with a Bose sound system and the power cord interface has only two specific cables (as shown in the image), a separate decoder box is required. This decoder box is not included and must be purchased separately. Please search for ASIN: B09KLRFLFH.

3.2 Steering Wheel Control (SWC) Setup

After physical installation, the steering wheel controls may need to be configured within the unit's settings. Access the SWC settings menu to map your vehicle's steering wheel buttons to the corresponding functions on the radio. Refer to the on-screen instructions for calibration.

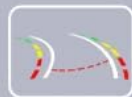
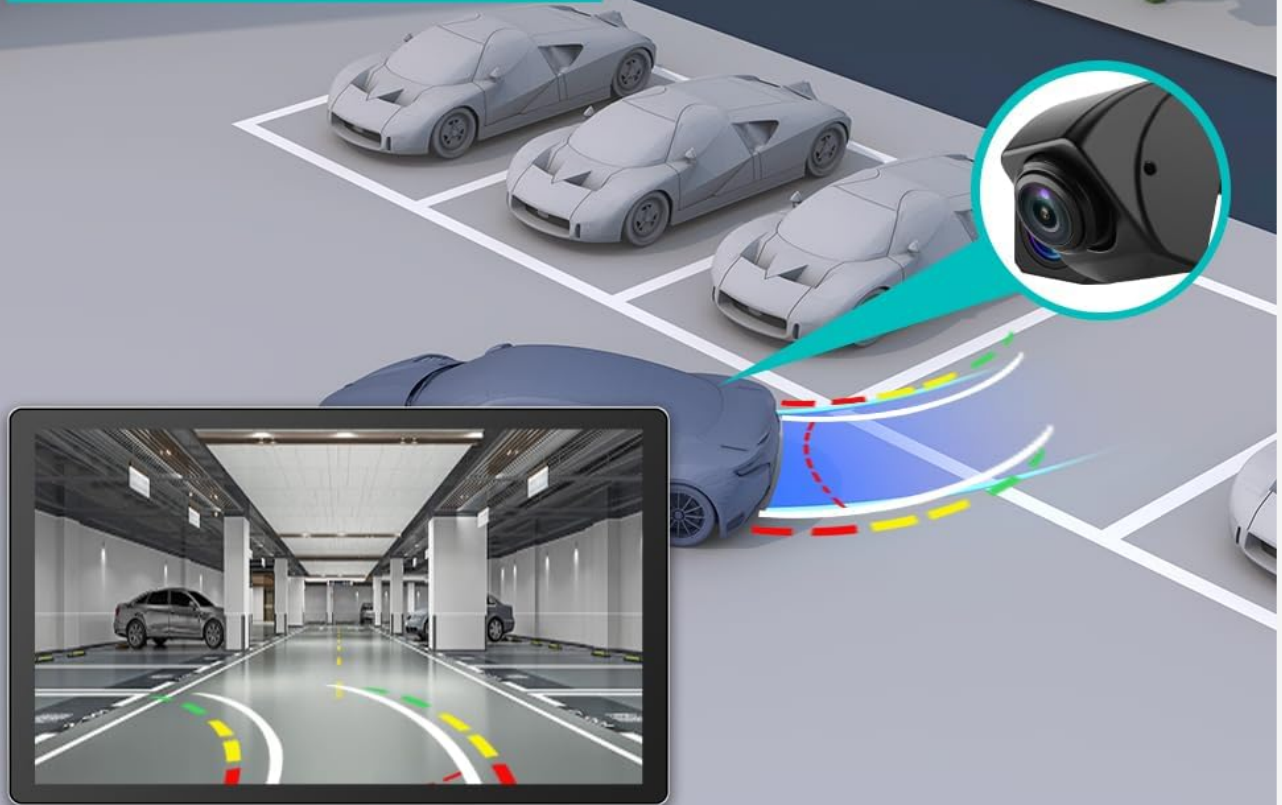


Image: A screenshot of the car radio's interface showing the Steering Wheel Control setup menu, where users can program buttons for functions like volume, track skip, and call management.

3.3 Backup Camera Connection

Connect the provided backup camera using the RCA cable and ensure the trigger wire is correctly connected to your vehicle's reverse light circuit. This enables automatic display of the rear view when shifting into reverse. Adjust camera settings within the unit's menu if necessary.

Reverse Camera



Dynamic trajectory



Waterproof



Viewing Angle

Image: The car radio display showing a clear view from a reverse camera with dynamic trajectory lines and parking assistance, indicating the unit's compatibility with backup cameras.

3.4 USB and 4G Antenna

The unit comes with multiple USB connectors. Connect them to the appropriate ports for data transfer, charging, or wired CarPlay/Android Auto. The 4G antenna is optional; if you plan to use your phone's hotspot for internet access, the 4G antenna may not be necessary.

4. OPERATING INSTRUCTIONS

4.1 Wireless CarPlay & Android Auto

Connect your iPhone or Android phone wirelessly or via USB to access features like navigation, music, messages, and contacts directly on the car radio display. This provides a seamless integration of your smartphone's functionalities.

Wireless CarPlay



Wireless Android Auto



Image: The car radio display showing both Wireless CarPlay and Wireless Android Auto interfaces, demonstrating the ability to mirror and control smartphone applications.

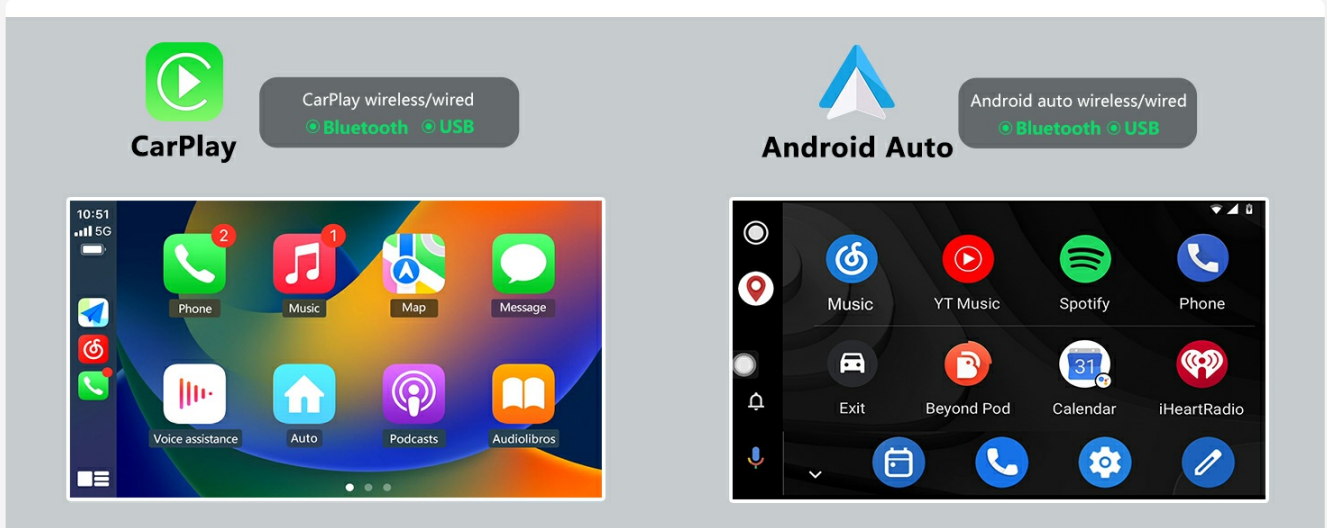


Image: An illustration showing both wireless (Bluetooth) and wired (USB) connection options for CarPlay and Android Auto.

4.2 GPS Navigation & Wi-Fi

The unit supports both online and offline navigation. Connect to a Wi-Fi hotspot to use online maps, download new applications from the App Store, and access other internet-based services. The GPS module ensures accurate positioning.



Image: The car radio display showing a GPS navigation map with route information, current speed, and estimated arrival time.

WIFI Applications

Easy to connect to wifi hotspot and access the internet in car, such as online music, online navigation maps.



Image: A visual representation of the Wi-Fi connectivity feature, showing the car radio connected to a hotspot for online music and navigation.

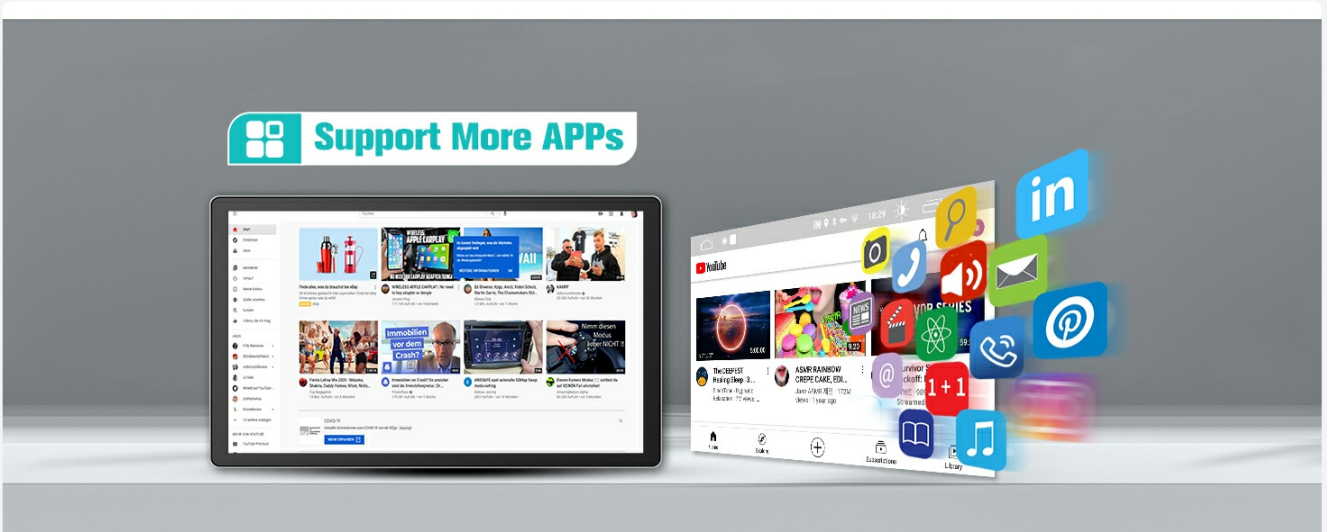


Image: The car radio display showing various applications, indicating the ability to download and use a wide range of apps via Wi-Fi.

4.3 Bluetooth Connectivity

Pair your phone via Bluetooth for hands-free calling and wireless audio streaming. The external microphone ensures clear voice pickup during calls, and your car speakers provide precise audio output.



Image: The car radio display showing the Bluetooth interface for phone calls, music playback, and phonebook access, with an external microphone for improved call quality.

4.4 FM/AM Radio & EQ Settings

Enjoy FM and AM radio with support for RDS channels, providing real-time traffic, news, and weather updates. The built-in Equalizer (EQ) allows you to fine-tune audio settings for a personalized listening experience.

FM AM Radio

Elevate your driving experience with our car radio, offering comprehensive FM, AM, and RDS channel support for easy access to news, music, and real-time traffic updates, enriching your time on the road.



Image: The car radio display showing the FM radio interface with frequency selection and station presets.



Image: The car radio display showing the 48-band EQ adjustment interface, allowing users to customize audio frequencies for optimal sound quality.

36EQ DSP Sound System

Equip with 36EQ, enjoy pure timbre bring happiness, including Normal, Jazz, Pop, Classical, Rock, ect. Feel the high sound quality make you immersive.



Image: An illustration detailing the 36EQ DSP sound system, showing sound distribution within a car and various EQ presets for different music genres.

4.5 Split Screen Functionality

The unit supports split-screen mode, allowing you to run two applications simultaneously, such as navigation and music playback, or video and maps, enhancing multitasking capabilities.

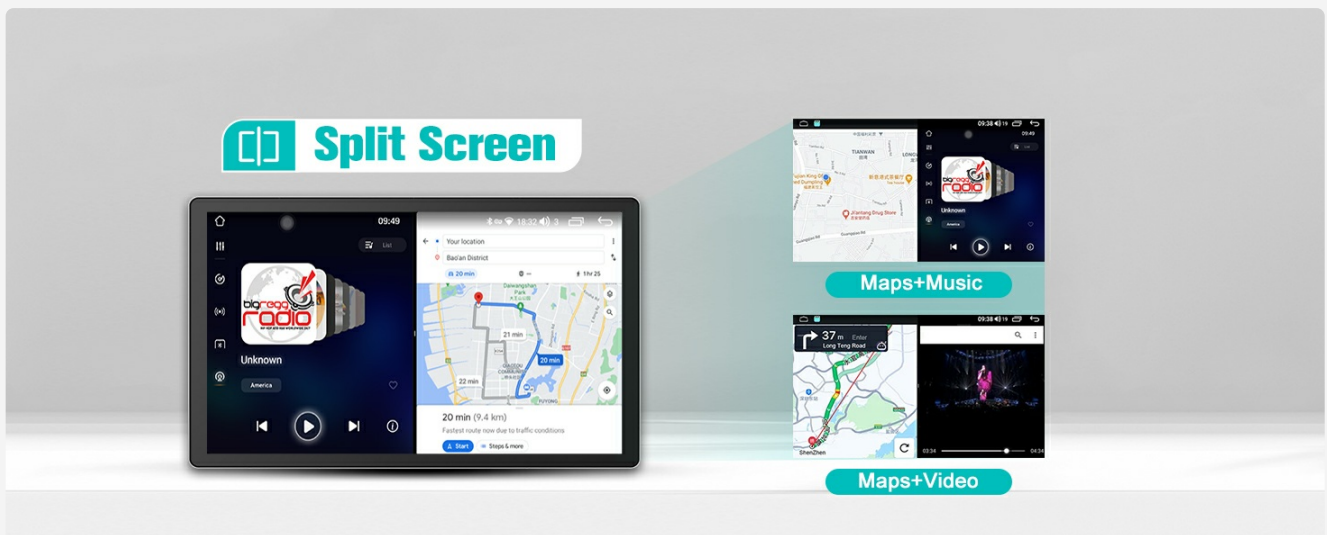


Image: The car radio display demonstrating the split-screen feature, showing maps and music running concurrently, and maps with video.

5. MAINTENANCE

To ensure the longevity and optimal performance of your Junsun Car Radio Stereo, follow these maintenance guidelines:

- **Screen Cleaning:** Use a soft, lint-free cloth to gently wipe the touchscreen. Avoid abrasive cleaners or solvents that could damage the display.
- **Software Updates:** Periodically check for available software updates through the unit's settings menu or the official Junsun website. Keeping the software updated can improve performance and add new features.
- **Environmental Conditions:** Avoid exposing the unit to extreme temperatures, direct sunlight for prolonged periods, or excessive moisture.
- **Cable Connections:** Ensure all cables remain securely connected. Loose connections can lead to intermittent functionality.

6. TROUBLESHOOTING

This section addresses common issues you might encounter. If you experience problems not listed here, please contact customer support.

6.1 Installation Challenges

- **Wiring Confusion:** The unit comes with multiple harnesses. Ensure you are using the correct harness for your vehicle. Incorrect wiring can lead to blown fuses or unit malfunction. Refer to the specific wiring diagrams for your vehicle model.
- **Bezel Fitment:** The outer bezel may require careful alignment and some force to fit around the screen. Ensure all internal components are properly seated before attempting to reattach the bezel.
- **USB Ports Not Working:** Verify that the USB connectors are plugged into the correct ports on the unit. Some vehicles may require an additional adapter to retain factory USB functionality.

6.2 Connectivity Issues

- **Bluetooth Disconnection:** If Bluetooth disconnects frequently, try restarting the unit and your phone. Ensure no other devices are interfering with the Bluetooth signal. Re-pair the device if necessary.
- **Wireless CarPlay/Android Auto Interruption:** Ensure a stable Wi-Fi connection (if applicable) and that your phone is within range. Check for any software updates for both the head unit and your smartphone.

6.3 Functionality Problems

- **Steering Wheel Control Inversion:** If track forward/reverse controls are inverted, access the SWC settings menu and attempt to re-calibrate or adjust the button assignments.
- **Grainy OEM Reverse Camera:** The quality of the OEM reverse camera may appear grainy on the new display due to resolution differences or signal conversion. Ensure all camera connections are secure.
- **Low Volume Output (External Systems):** If connecting to an external amplifier or sound system and experiencing low power output, verify all RCA connections and amplifier settings. The unit's internal amplifier may have different characteristics than your previous head unit.
- **Screen Restarts:** If the screen restarts unexpectedly, check power connections to ensure they are stable. Ensure the unit is not overheating. If the issue persists, contact customer support.
- **Voice Commands Not Heard:** If people cannot hear you during calls, ensure the external microphone is properly connected and positioned. Adjust microphone sensitivity settings if available.

7. SPECIFICATIONS

Feature	Specification
Model	B0DJKWDV6M
Screen Size	13.1 inches
Operating System	Android
Processor	8-Core
RAM	6GB
Internal Storage	128GB
Connectivity	Bluetooth, Wi-Fi, USB, 4G (optional antenna)

Special Features	Touchscreen, GPS Navigation, Wireless CarPlay, Android Auto, EQ, FM/AM Radio, Steering Wheel Control Support, Reverse Camera Input
Applicable Vehicle Service Type	Truck (Chevy Silverado, GMC Sierra 2014-2018)
Item Weight	6.91 pounds
Package Dimensions	14.57 x 13.94 x 6.46 inches

8. WARRANTY AND SUPPORT

8.1 Warranty Information

For detailed warranty information regarding your Junsun Car Radio Stereo, please refer to the official Junsun website or contact Junsun customer support directly. Warranty terms and conditions may vary.

8.2 Customer Support

If you require assistance with installation, operation, or troubleshooting, please contact Junsun customer support:

Email: Junsun-US@outlook.com

Online Store: Visit the official [Junsun Store on Amazon](#) for additional resources and product information.



Image: A customer support representative with a headset, symbolizing available assistance.