

Sujata MG03

Sujata MG03 Mixer Grinder Instruction Manual

INTRODUCTION

Welcome to the Sujata MG03 Mixer Grinder instruction manual. This document provides essential information for the safe and efficient operation, maintenance, and care of your new appliance. Please read this manual thoroughly before first use and retain it for future reference.

IMPORTANT SAFETY INSTRUCTIONS

General Safety Precautions

- Read all instructions before using the appliance.
- Ensure the voltage indicated on the appliance corresponds to your local mains voltage before connecting.
- Do not immerse the motor unit, cord, or plug in water or any other liquid.
- Keep hands and utensils out of the jar while blending to reduce the risk of severe injury or damage to the blender. A scraper may be used but only when the blender is not running.
- Close supervision is necessary when any appliance is used by or near children.
- Unplug from outlet when not in use, before putting on or taking off parts, and before cleaning.
- Avoid contact with moving parts.
- Do not operate any appliance with a damaged cord or plug or after the appliance malfunctions, or has been dropped or damaged in any manner.
- The use of attachments not recommended or sold by the manufacturer may cause fire, electric shock, or injury.
- Do not use outdoors.
- Do not let cord hang over edge of table or counter or touch hot surfaces.
- Always operate the appliance on a flat, stable surface.
- Do not fill jars beyond the maximum fill line.
- Ensure the lid is securely locked in place before operating the appliance.

PRODUCT OVERVIEW

The Sujata MG03 Mixer Grinder is designed for efficient grinding, blending, and juicing tasks. It features a powerful motor and a versatile set of jars to cater to various kitchen needs.

Key Components

- **Motor Unit:** The main power unit housing the 1000-watt double ball bearing motor.
- **Liquidizer Jar (1.75L):** Transparent jar for blending liquids, shakes, and includes a coconut milk extractor.
- **Dome-Shaped Stainless Steel Jar (1.5L):** For wet grinding batters and includes changeable blades for whisking, mincing, and grating.
- **Dry Grinding Jar (1.0L):** For grinding dry spices and coffee beans.
- **Chutney Jar (0.5L):** Compact jar for small quantities like chutneys and pastes.
- **Blades:** Food-grade, high-tensile stainless steel blades.
- **Tamper Tool:** For pushing ingredients down in the blender jar.



Figure 1: Sujata MG03 Mixer Grinder with its four accompanying jars.

DURABLE & RELIABLE

J A R S

500ML
FOOD GRADE
STAINLESS
STEEL JAR

1000ML
FOOD GRADE
STAINLESS
STEEL JAR

1.5L
STAINLESS STEEL
BLENDER JAR

1.75L
UNBREAKABLE
CLEAR JAR



Figure 2: The four durable jars included with the Sujata MG03: 500ml, 1000ml, 1.5L stainless steel, and 1.75L unbreakable clear jar.



6-POINT BLADE FOR
ULTRA-SMOOTH BLEND



TAMPER FOR STIRRING THE
MATERIAL IN THE BLENDER JAR



ERGONOMIC
HANDLE GRIP



COCONUT MILK EXTRACTOR FOR
POLYCARBONATE BLENDER JAR

Figure 3: Detailed view of key features: 6-point blade for smooth blending, tamper for stirring, ergonomic handle grip, and the coconut milk extractor.



A SPECIAL

COCONUT MILK AND PUREE EXTRACTOR

Figure 4: The specialized coconut milk and puree extractor attachment for efficient separation.

3F BENEFITS

FASTER, FINER, FOREVER



25,000 RPM
FOR HIGH-SPEED
OPERATIONS



RESEARCH BASED
BLADES DESIGN FOR
FINE GRINDING



DOUBLE BALL
BEARING FOR
LONGER LIFE



Figure 5: Overview of the 3F benefits: Faster operation with 25,000 RPM, Finer grinding with research-based blade design, and Longer life with double ball bearings.



90
MINUTES
NON-STOP
RUNNING



3WAY
VENTS
FOR EXTRA
COOLING



100%
COPPER WIRE
WITH H-CLASS
INSULATION

Figure 6: Features highlighting continuous operation for 90 minutes, efficient 3-way cooling vents, and a durable 100% copper wire motor with H-class insulation.

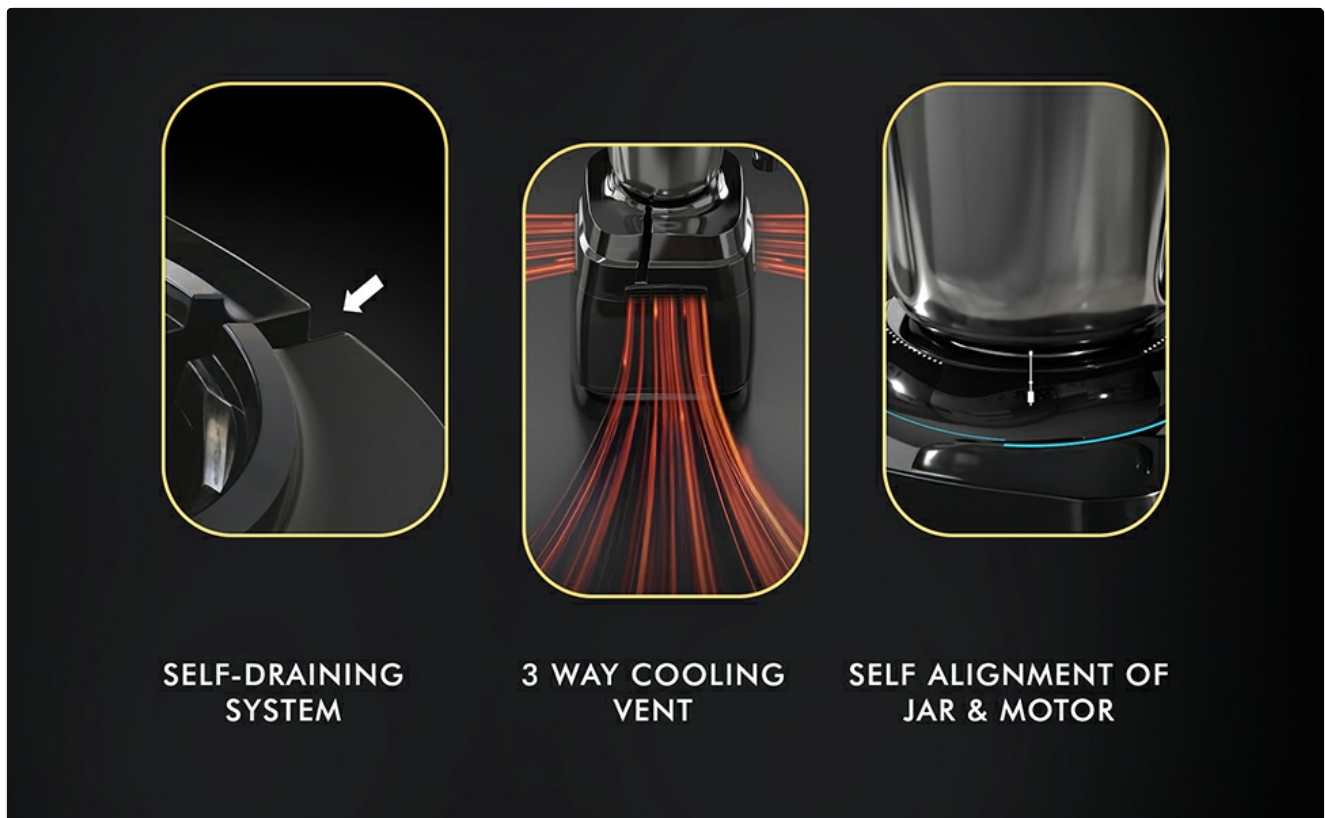


Figure 7: Advanced design features including a self-draining system, 3-way cooling vents, and automatic jar-to-motor alignment for enhanced safety and performance.

SETUP AND FIRST USE

Unpacking

- Carefully remove all components from the packaging.
- Inspect the appliance for any damage. Do not use if damaged.
- Remove all packaging materials, stickers, and labels.
- Clean all removable parts (jars, lids, blades) with warm soapy water before first use. Rinse thoroughly and dry.
- Wipe the motor unit with a damp cloth. Do not immerse the motor unit in water.

Assembly

- Place the motor unit on a stable, flat, and dry surface.
- Select the appropriate jar for your task.
- Ensure the blade assembly is securely fitted inside the jar.
- Place the ingredients into the jar, ensuring not to exceed the maximum fill line.
- Secure the lid onto the jar.
- Place the assembled jar onto the motor unit, aligning the locking tabs. Turn clockwise until it locks securely into place.
- Ensure the jar is properly seated and locked before plugging in the appliance.

OPERATING INSTRUCTIONS

General Operation

- Plug the mixer grinder into a suitable power outlet.

- Turn the speed selector knob to the desired speed setting (1, 2, or 3).
- For short bursts of power, use the **Pulse** function by turning the knob to 'P' and releasing. This is ideal for whipping or precise blending.
- The Sujata MG03 is designed for non-stop operation for up to 90 minutes, ensuring consistent performance for longer tasks.
- If ingredients stick to the sides of the jar during operation, switch off the appliance, unplug it, remove the lid, and use the tamper tool or a spatula to push the ingredients down. Never use your hands or other utensils while the appliance is running.
- After use, turn the speed selector to 'OFF' and unplug the appliance.

Specific Applications

Blending (1.75L Liquidizer Jar)

Use for shakes, cold coffee, mocktails, buttermilk, and other liquid preparations. The coconut milk extractor mesh can be inserted for efficient coconut milk separation.

Wet Grinding (1.5L Dome-Shaped Stainless Steel Jar)

Ideal for preparing thick batters like dosa, hummus, and gravies. Utilize the changeable blades for specific tasks such as egg whisking, meat mincing, or grating.

Dry Grinding (1.0L Dry Grinding Jar)

Suitable for grinding dry spices such as turmeric, coffee beans, and garam masala.

Chutney Grinding (0.5L Chutney Jar)

Perfect for small quantities of chutneys, ginger-garlic paste, and tamarind.



Figure 8: Examples of ingredients ground to perfection, such as coffee and turmeric, demonstrating the grinder's efficiency.

CARE AND MAINTENANCE

Cleaning

- Always unplug the appliance before cleaning.
- **Motor Unit:** Wipe the motor unit with a soft, damp cloth. Do not use abrasive cleaners or immerse it in water. The self-drainage design helps prevent water accumulation, enhancing motor safety.
- **Jars and Lids:** Wash jars, lids, and blades with warm soapy water immediately after use to prevent food from drying on. Use a brush for hard-to-reach areas. Rinse thoroughly and dry completely before storing.
- **Blades:** Handle blades with extreme care as they are sharp.
- Do not wash any parts in a dishwasher unless explicitly stated in the product specifications.

Storage

- Store the mixer grinder and its accessories in a clean, dry place.
- Ensure the cord is neatly wrapped and not kinked.

TROUBLESHOOTING

Common Issues and Solutions

Problem	Possible Cause	Solution
Appliance does not start.	Not plugged in; jar not properly locked; power outage.	Check power connection; ensure jar is securely locked; check household power supply.
Motor stops during operation.	Overload; motor overheating.	Switch off, unplug, reduce load, allow motor to cool for 15-20 minutes before restarting.
Loud noise or vibration.	Jar not seated correctly; uneven load; worn coupler.	Ensure jar is locked properly; distribute ingredients evenly; contact customer support if coupler is worn.
Leakage from jar.	Lid not secured; gasket missing or damaged; jar overfilled.	Ensure lid is tightly closed; check and replace gasket if necessary; do not overfill the jar.

TECHNICAL SPECIFICATIONS

Brand: Sujata

Model: MG03

Power: 1000 Watts

Motor Type: Double Ball Bearing Motor with 100% Copper Windings

RPM: 25,000

Operating Time: Non-Stop 90 Minutes

Jars Included:

- 1.75 L Unbreakable Transparent Liquidizer Jar (with Coconut Milk Extractor)
- 1.5 L Dome-Shaped Stainless Steel Jar (with 3 changeable blades)
- 1.0 L Dry Grinding Jar
- 0.5 L Chutney Jar

Blade Material: Food-grade, High-tensile Stainless Steel

Container Material: Stainless Steel, Polycarbonate

Number of Speeds: 3 + Pulse

Voltage: 240 Volts (AC)

Product Dimensions: 55D x 28W x 42H Centimeters

Item Weight: 7 kg 580 g

Special Features: Changeable Blades, Self-Drainage Design, 3-Way Cooling Vents

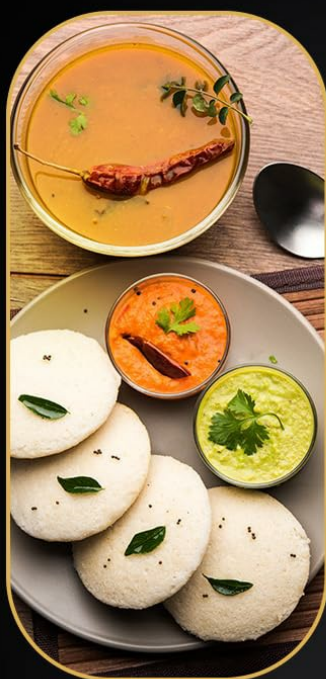
WARRANTY AND CUSTOMER SUPPORT

Warranty Information

The Sujata MG03 Mixer Grinder comes with a full warranty. Please refer to the warranty card included with your product for specific terms and conditions, including the warranty period and coverage details.

Customer Support





For any queries, service requests, or technical assistance, please contact Sujata customer support. You can find contact details on the official Sujata website or on the warranty card.



GRIND. BLEND. SIP.
EFFORTLESS, EVERY TIME.

Figure 9: Sujata offers nationwide doorstep service. For support, contact Sujata Care at 1800-1022-758.

Related Documents - MG03

	<p>Sujata Supermix Mixer Grinder Operating Manual - Features, Usage, and Specifications</p> <p>Comprehensive operating manual for the Sujata Supermix Mixer Grinder (900 Watts, 3 Jars). Learn about parts identification, usage instructions for blender, dry grinder, and chutney grinder, cleaning, maintenance, precautions, specifications, and warranty.</p>
	<p>Sujata Powermatic Plus Mixer Grinder Operating Manual</p> <p>User manual for the Sujata Powermatic Plus Mixer Grinder, providing essential instructions for safe operation and initial checks.</p>
	<p>Sujata Powermatic Plus Juicer Mixer Grinder Operating Manual & Specifications</p> <p>Comprehensive operating manual for the Sujata Powermatic Plus Juicer Mixer Grinder, covering usage, cleaning, safety precautions, specifications, and warranty information.</p>
	<p>Sujata Multimix Mixer Grinder Juicer: User Guide & Features</p> <p>Learn how to use your Sujata Multimix Mixer Grinder Juicer for various kitchen tasks, including grinding, juicing, and making coconut milk. This guide covers operation, maintenance, and safety.</p>