

## Manuals+

[Q & A](#) | [Deep Search](#) | [Upload](#)

Manuals.plus /

› [rag & bone](#) /

› rag & bone Women's Flexi Peyton Mid Rise Ankle Bootcut Jeans Instruction Manual

## rag & bone WDD25S2972FXOW

# rag & bone Women's Flexi Peyton Mid Rise Ankle Bootcut Jeans Instruction Manual

Model: WDD25S2972FXOW

## 1. INTRODUCTION

---

This manual provides essential information for the rag & bone Women's Flexi Peyton Mid Rise Ankle Bootcut Jeans. It covers product features, sizing, care instructions, and general maintenance to ensure the longevity and optimal wear of your garment.

## 2. PRODUCT FEATURES

---

- **Fit:** Designed to run true to size, featuring a mid-rise waist, a bootcut leg, and an ankle length. The fit may be roomy at the back waistband.
- **Fabric:** Constructed from mid-weight, super-stretch denim for comfort and flexibility.
- **Styling:** Classic 5-pocket styling.
- **Closure:** Button closure with a zip fly.





Image: Detail of the button closure and front pocket, highlighting the classic 5-pocket design.

### **3. SIZING INFORMATION**

---

To ensure the best fit, please refer to the size guide below. Measurements are provided in inches for waist and hip circumference. The jeans are designed with a mid-rise of 9.75 inches (25 cm), an inseam of 26.75 inches (68 cm), and a leg opening of 16.25 inches (41 cm).

## US REGULAR

Brand Size	Waist (in)	Hip (in)
23	24	34.5
24	25	35.5
25	26	36.5
26	27	37.5
27	28	38.5
28	29	39.5
29	30	40.5
30	31	41.5
31	32	42.5
32	33	43.5
33	34	44.5
34	35	45.5

## 4. WEARING AND FIT

---

The Flexi Peyton jeans are designed for a comfortable mid-rise fit with a bootcut leg that finishes at the ankle. The super-stretch denim adapts to your body while maintaining its shape. Consider your usual size, noting the potential for a slightly roomier fit at the back waistband.





Image: Front view of the jeans, showcasing the mid-rise and bootcut silhouette.





Image: Back view of the jeans, illustrating the pocket placement and leg shape.

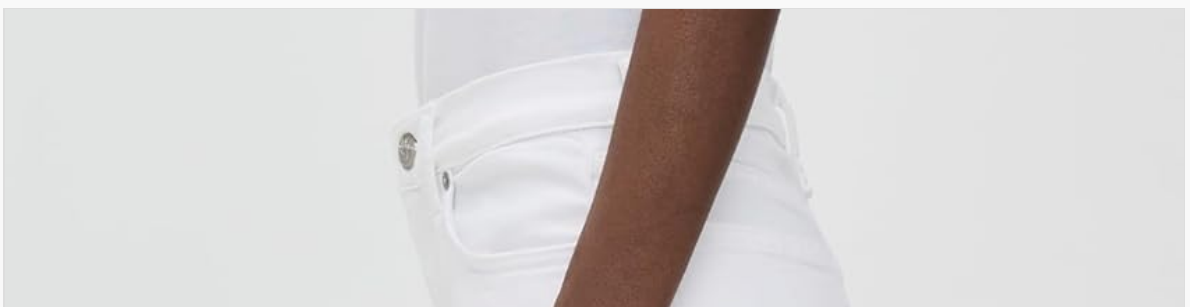




Image: Side view of the jeans, showing the ankle length and bootcut flare.





Image: Model wearing the jeans, demonstrating the overall fit and style.

## 5. CARE INSTRUCTIONS

---

Proper care will help maintain the quality and appearance of your jeans.

- **Washing:** Wash cold. It is recommended to wash inside out to preserve color and fabric integrity.
- **Drying:** Tumble dry low or hang dry to prevent shrinkage and maintain shape.
- **Bleaching:** Do not bleach.
- **Ironing:** Iron on low heat if necessary, avoiding direct contact with any embellishments.

## 6. MAINTENANCE AND STORAGE

---

To extend the life of your jeans:

- **Regular Cleaning:** Follow care instructions for washing. Avoid overwashing to maintain fabric quality.
- **Storage:** Store jeans folded or hung in a cool, dry place away from direct sunlight to prevent fading and damage.
- **Stain Treatment:** Address stains promptly according to fabric care guidelines.

## 7. PRODUCT SPECIFICATIONS

---

Specification	Detail
Item Model Number	WDD25S2972FXOW
Fabric Type	Shell: 77% cotton, 16% lyocell, 5% polyester, 2% elastane
Origin	Imported
Closure Type	Button closure and zip fly
Package Dimensions	10.13 x 7.88 x 2.06 inches; 1.13 Pounds
Department	Womens
Date First Available	October 3, 2024

## 8. TROUBLESHOOTING FIT

---

If you experience fit issues:

- **Too Tight/Loose:** Refer to the sizing chart in Section 3 and compare your measurements. Consider trying a different size.
- **Back Waistband Roominess:** As noted in features, these jeans may fit roomy at the back waistband. This is part of the design.
- **Length:** The jeans are designed for an ankle length. If the length is not as expected, verify the inseam measurement against your preference.

## 9. WARRANTY AND SUPPORT

---

This product is subject to a 30-day return policy for refund or replacement. For further assistance or inquiries regarding your rag & bone Flexi Peyton Mid Rise Ankle Bootcut Jeans, please contact the retailer or manufacturer's customer support.

