

KoolMore KM-BR32SS

KoolMore 3.2 Cu. Ft. Beverage Refrigerator Merchandiser User Manual

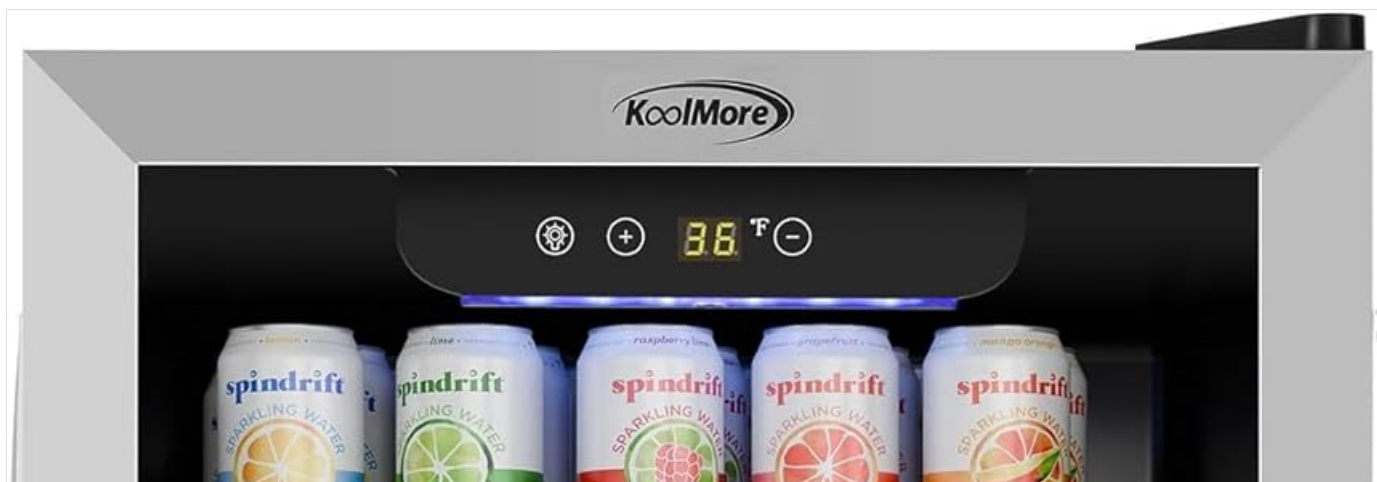
Model: KM-BR32SS

1. INTRODUCTION AND OVERVIEW

Thank you for choosing the KoolMore 3.2 Cu. Ft. Beverage Refrigerator Merchandiser (Model: KM-BR32SS). This appliance is designed to provide efficient and stylish storage for your beverages, suitable for both commercial and home settings. Its compact design, quiet operation, and advanced features ensure your drinks are perfectly chilled and easily accessible.

Key features include:

- Sleek black finish with durable stainless steel trim.
- Quiet operation at just 43 dB, ideal for various environments.
- Generous 3.2 cu. ft. capacity, holding up to 119 standard cans.
- Blue LED interior lighting for enhanced visibility and display.
- Durable tempered glass door for safety and clear viewing.
- Digital temperature control for precise cooling.
- Four adjustable wire shelves for versatile storage.
- Reversible door for flexible placement.
- ETL Listed for safety and sanitation.



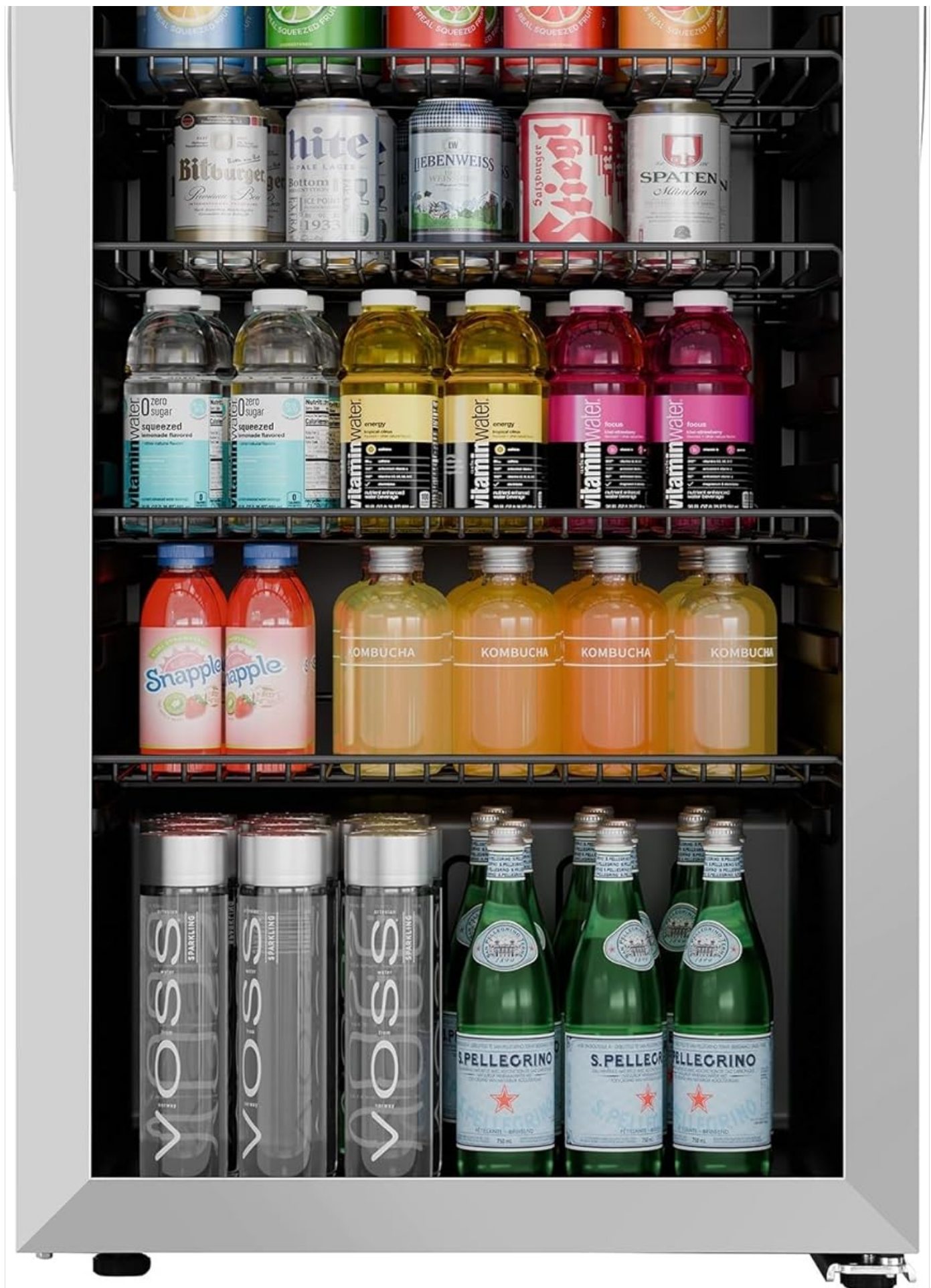


Figure 1.1: Front view of the KoolMore beverage refrigerator, showcasing its capacity filled with various beverages.

2. SAFETY INFORMATION

WARNING: To reduce the risk of fire, electric shock, or injury when using your appliance, follow these basic precautions:

- Read all instructions before using the appliance.
- Connect to a grounded 3-prong outlet only. Do not remove the grounding prong, do not use an adapter, and do not use an extension cord.
- It is recommended that a separate circuit, serving only your appliance, be provided. Use receptacles that cannot be turned off by a switch or pull chain.
- Never clean appliance parts with flammable fluids. The fumes can create a fire hazard or explosion.
- Do not store or use gasoline or other flammable vapors and liquids in the vicinity of this or any other appliance. The fumes can create a fire hazard or explosion.
- Before proceeding with any cleaning or maintenance operations, make sure the power line of the unit is disconnected.
- Do not connect or disconnect the electric plug when your hands are wet.
- Unplug the appliance or disconnect power before cleaning or servicing. Failure to do so can result in electric shock or death.
- Do not attempt to repair or replace any part of your appliance unless it is specifically recommended in this manual. All other servicing should be referred to a qualified technician.
- This appliance contains isobutane refrigerant (R600a), a natural gas with high environmental compatibility, which is nevertheless flammable. During transportation and installation, ensure that none of the refrigerant circuit components become damaged.
- Keep ventilation openings, in the appliance enclosure or in the built-in structure, clear of obstruction.
- Do not use mechanical devices or other means to accelerate the defrosting process, other than those recommended by the manufacturer.
- Do not damage the refrigerant circuit.
- Do not use electrical appliances inside the food storage compartments of the appliance, unless they are of the type recommended by the manufacturer.

3. WHAT'S IN THE BOX

Upon unpacking your KoolMore Beverage Refrigerator, please ensure all components listed below are present and in good condition:

- One (1) KoolMore Beverage Refrigerator Unit
- Four (4) Wire Shelves
- User Manual (this document)

If any items are missing or damaged, please contact KoolMore customer support immediately.

4. SETUP AND INSTALLATION

4.1 Unpacking

Carefully remove all packaging materials, including foam and adhesive tape. Inspect the refrigerator for any shipping damage. Keep the packaging materials until you are satisfied with the product's condition.

4.2 Placement

- **Ventilation:** Ensure adequate air circulation around the unit. Allow at least 4 inches (10 cm) of space at the back and sides for proper ventilation and heat dissipation.

- **Leveling:** Place the refrigerator on a flat, stable surface. Use the adjustable leveling legs at the bottom of the unit to ensure it is perfectly level. This is crucial for proper door sealing and efficient operation.
- **Temperature:** Avoid placing the unit in direct sunlight or near heat sources (e.g., ovens, radiators). Extreme ambient temperatures can affect cooling performance.
- **Quiet Operation:** While designed for quiet operation (43 dB), ensure the unit is not touching any walls or cabinets that could amplify vibrations.



Figure 4.1: Rear view of the refrigerator, highlighting the need for adequate ventilation space.

4.3 Power Connection

Before plugging in the unit, allow it to stand upright for at least 2-4 hours. This allows the refrigerant to settle. Connect the refrigerator to a dedicated, grounded 115 Volts, 60 Hz AC outlet. Do not use extension cords or multi-outlet adapters.

4.4 Shelf Installation

The four wire shelves can be adjusted to accommodate various bottle and can sizes. Simply slide the shelves into the desired grooves inside the refrigerator. Ensure they are securely seated before placing items on them.



Figure 4.2: Interior of the refrigerator showing the adjustable wire shelves.

4.5 Reversible Door

The door hinges are reversible, allowing you to change the door swing direction to best suit your space. Refer to the detailed diagram and instructions provided in a separate supplement or contact customer support for assistance with this procedure.

5. OPERATING INSTRUCTIONS

5.1 Initial Startup

After plugging in the unit, the internal temperature will begin to drop. Allow the refrigerator to operate empty for at least 24 hours to reach its set temperature before loading beverages.

5.2 Digital Temperature Control

The refrigerator features a touch panel with digital temperature control located at the top interior. The display shows the current internal temperature. Use the '+' and '-' buttons to adjust the desired temperature. The recommended operating temperature range is 37-61°F (approximately 3-16°C).



Figure 5.1: Digital touch panel for temperature control and LED lighting.

5.3 Blue LED Interior Lighting

The blue LED lights illuminate the interior, enhancing visibility and creating an attractive display. These lights can typically be controlled via a dedicated button on the touch panel. Press the light bulb icon to turn the interior lights on or off.

5.4 Loading Beverages

Arrange beverages on the adjustable wire shelves. Avoid overloading shelves to ensure proper air circulation and efficient cooling. The unit can hold up to 119 standard 12oz cans. For optimal performance, do not block the internal air vents.

6. MAINTENANCE

6.1 Cleaning the Interior

Before cleaning, unplug the refrigerator. Clean the interior with a solution of mild detergent and warm water. Do not use abrasive cleaners or harsh chemicals, as they may damage the surfaces. Wipe dry thoroughly after cleaning.

6.2 Cleaning the Exterior

Wipe the exterior surfaces, including the stainless steel trim and tempered glass door, with a soft cloth and a mild glass cleaner or stainless steel cleaner. Avoid spraying cleaner directly onto the control panel. Ensure the door gasket is clean and free of debris to maintain a proper seal.

6.3 Manual Defrost

This unit features manual defrost. Frost buildup on the interior cooling surfaces is normal. When the frost layer becomes about 1/4 inch (0.6 cm) thick, it's time to defrost. To defrost:

1. Unplug the refrigerator from the power outlet.
2. Remove all beverages and shelves.
3. Leave the door open to allow frost to melt naturally. Place towels or a shallow pan at the bottom to collect water.
4. Once defrosted, clean and dry the interior thoroughly before plugging the unit back in and reloading.

Do not use sharp objects or heating devices to remove frost, as this can damage the cooling system.

7. TROUBLESHOOTING

Before contacting customer service, please check the following common issues and solutions:

Problem	Possible Cause	Solution
Refrigerator does not operate.	Not plugged in; Circuit breaker tripped/fuse blown; Temperature control set to "OFF" or too high.	Ensure plug is securely in outlet; Reset circuit breaker/replace fuse; Adjust temperature setting to a lower value.
Temperature is not cold enough.	Door opened too frequently; Door not closed completely; Warm beverages added recently; Poor ventilation; Unit located in direct sunlight or near heat source.	Minimize door openings; Ensure door is fully closed; Allow time for new items to cool; Ensure adequate space around unit; Relocate unit if necessary.
Excessive frost buildup.	High humidity; Door not sealed properly; Door opened too frequently.	This is a manual defrost unit, regular defrosting is required; Check door gasket for proper seal; Minimize door openings.
Vibrations or unusual noises.	Unit not level; Unit touching wall/cabinet; Loose parts.	Adjust leveling legs; Move unit away from contact points; Contact customer support if noise persists.
Condensation on glass door.	High ambient humidity; Door opened frequently.	This is normal in humid conditions; Minimize door openings.

8. SPECIFICATIONS

Feature	Detail
Brand Name	KoolMore
Model Info	KM-BR32SS
Item Weight	50 pounds
Product Dimensions	18.3 x 17.5 x 31.5 inches (46.5 x 44.5 x 80 cm)
Capacity	3.3 Cubic Feet (approx. 119 cans)
Annual Energy Consumption	116.5 Kilowatt Hours Per Year
Installation Type	Freestanding
Form Factor	Mini Fridge
Special Features	Adjustable Shelves, Blue LED Lights, Digital Temperature Control, Manual Defrost, Reversible Door
Color	Black
Voltage	115 Volts
Number of Shelves	4
Shelf Type	Wire
Door Material Type	Glass
Certification	ETL Listed for Safety and Sanitation
Date First Available	October 2, 2024

9. WARRANTY AND CUSTOMER SUPPORT

KoolMore products are manufactured to the highest quality standards. For information regarding your product's warranty, please refer to the warranty card included with your purchase or visit the official KoolMore website. Keep your purchase receipt as proof of purchase for warranty claims.

For technical assistance, troubleshooting not covered in this manual, or to order replacement parts, please contact KoolMore Customer Support:

- Website:** [www.koolmore.com](#) (example link, actual link not provided)
- Phone:** [Insert Customer Service Phone Number Here] (example, actual number not provided)
- Email:** [Insert Customer Service Email Here] (example, actual email not provided)

When contacting support, please have your model number (KM-BR32SS) and purchase date ready.