

Logitech G 920-013131

Logitech G PRO X TKL Rapid Wired Gaming Keyboard User Manual

Model: 920-013131

1. INTRODUCTION

The Logitech G PRO X TKL Rapid Wired Gaming Keyboard is engineered for competitive gaming, offering advanced features such as magnetic analog key switches, Rapid Trigger functionality, and extensive customization options. This tenkeyless keyboard provides a compact design without compromising performance, making it suitable for various gaming environments.



Figure 1: Logitech G PRO X TKL Rapid Wired Gaming Keyboard

2. WHAT'S IN THE BOX

Verify that all items are present in the packaging:

- PRO X TKL RAPID tenkeyless gaming keyboard
- USB A to C Charging/data cable
- User documentation

WHAT'S IN THE BOX

PRO X TKL RAPID



USB-A TO USB-C CHARGING AND DATA CABLE

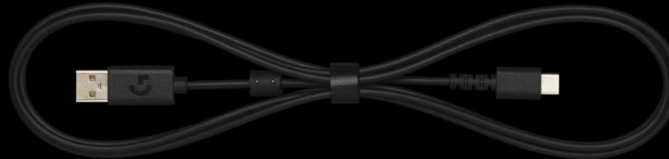


Figure 2: Contents of the product packaging

3. SETUP

To begin using your Logitech G PRO X TKL Rapid keyboard:

1. Connect the provided USB-A to USB-C cable to the keyboard's USB-C port.
2. Plug the USB-A end of the cable into an available USB port on your computer.
3. The keyboard will automatically power on and establish a wired connection.
4. For advanced customization and control, download and install the Logitech G HUB software from the official Logitech G website.



Figure 3: Keyboard connection points and dedicated controls

4. KEY FEATURES

4.1 Magnetic Analog Switches

The keyboard features magnetic analog (Hall-Effect) switches, providing fluid and reliable key actuation at 35g of force. This technology allows for precise control and responsiveness.

ANALOG SWITCHES



Figure 4: Responsive magnetic linear experience with analog switches

4.2 Rapid Trigger Functionality

The Rapid Trigger mode enables key reactivation without requiring a full release. This feature is particularly beneficial in fast-paced games where quick, repeated inputs are critical.

RAPID TRIGGER



REPEAT FAST AND PRECISE ACTIONS

Figure 5: Rapid Trigger for fast and precise actions

4.3 Customizable Actuation Points

Achieve optimal speed and accuracy by customizing the actuation points and sensitivity for each key. This can be configured within the Logitech G HUB software for a personalized gaming experience.

CUSTOMIZABLE ACTUATION POINTS



Figure 6: Precise 0.1 mm control, adjustable per key

4.4 KEYCONTROL

KEYCONTROL provides total command over your keyboard. You can set specific commands and build multi-action combos across multiple layers on every single key using the Logitech G HUB software.

CUSTOMIZE WITH KEYCONTROL

ADJUST EVERY KEY VIA LOGITECH G HUB

Figure 7: Adjust every key via Logitech G HUB with KEYCONTROL

4.5 LIGHTSYNC RGB Lighting

The LIGHTSYNC RGB lighting system allows for dynamic synchronization with music or on-screen action. You can personalize the color of any key to match your preferences and gaming setup.

LIGHT IT UP



LIGHTSYNC RGB LIGHTING

Figure 8: Dynamic LIGHTSYNC RGB Lighting

5. OPERATING INSTRUCTIONS

5.1 Dedicated Media Controls

The keyboard features dedicated media controls and a volume roller for convenient audio management during use.

5.2 Game Mode

Activate Game Mode to disable certain keys (e.g., Windows key) that might interrupt gameplay. This ensures an uninterrupted gaming experience.

5.3 Key Priority (via G HUB)

Within Logitech G HUB, you can select key priority functions such as Key Travel Priority, Last Input Priority, or Absolute Priority for specific keys. Note that some key priority functions may be restricted in certain games.

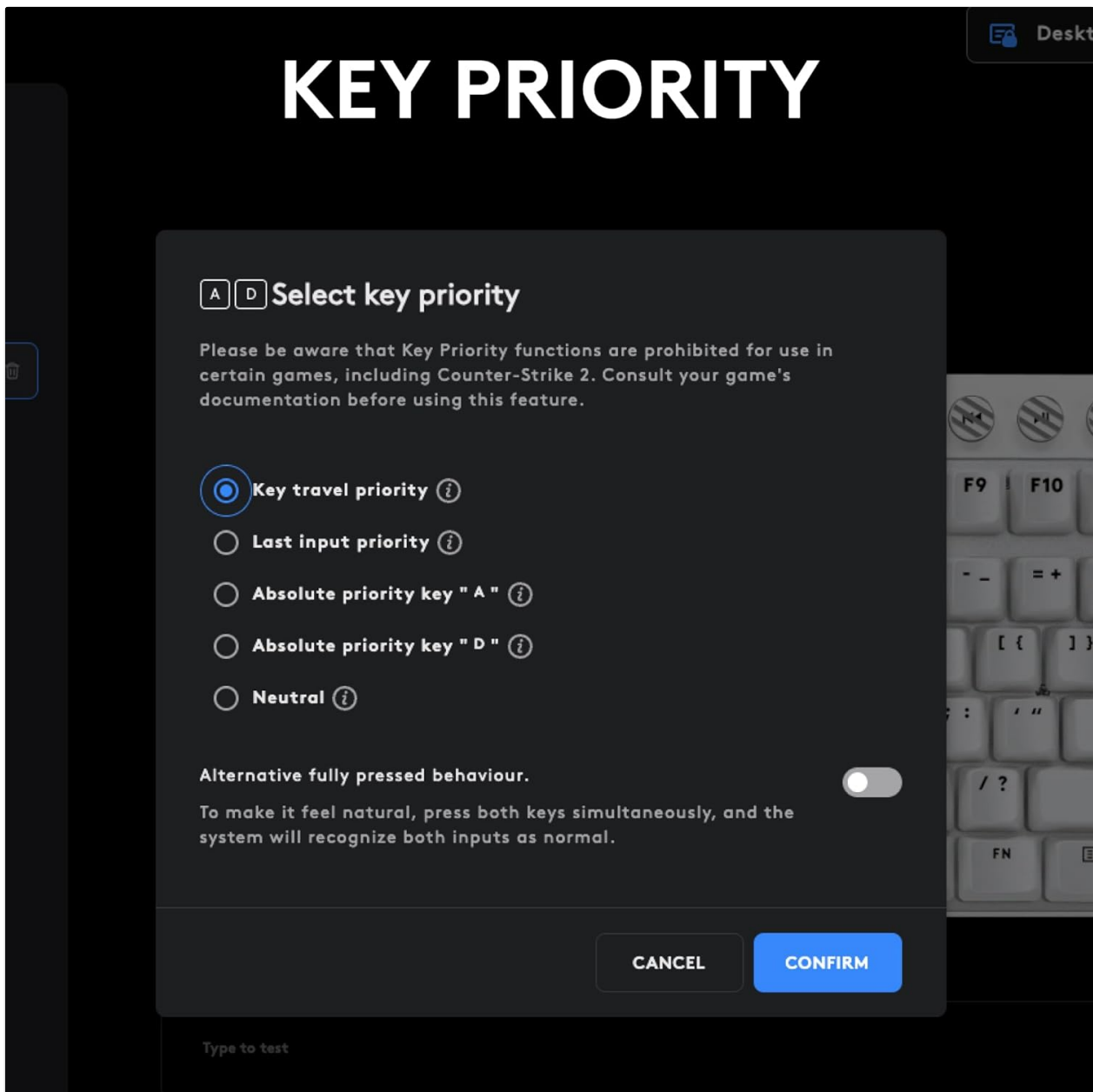


Figure 9: Logitech G HUB Key Priority settings

6. MAINTENANCE

To ensure the longevity and optimal performance of your keyboard:

- Regularly clean the keycaps and keyboard surface with a soft, dry cloth.
- Avoid exposing the keyboard to excessive moisture or extreme temperatures.
- Use the provided USB-C cable for charging and data transfer to prevent damage.

7. TROUBLESHOOTING

If you encounter issues with your keyboard, consider the following:

- **Keyboard not responding:** Ensure the USB-C cable is securely connected to both the keyboard and your computer. Try a different USB port.
- **Lighting issues:** Check Logitech G HUB software for lighting settings. Ensure the keyboard is receiving sufficient power.
- **Customization not applying:** Verify that Logitech G HUB software is running and updated to the latest version. Ensure profiles are correctly saved and activated.

8. SPECIFICATIONS

Feature	Detail
Brand	Logitech G
Series	PRO X TKL
Model Number	920-013131
Item Weight	5.3 ounces
Product Dimensions	14.06 x 5.91 x 1.5 inches
Color	Black
Power Source	USB Power
Batteries	1 Lithium Polymer batteries required (included)
Connectivity Technology	USB-A, USB-C
Keyboard Description	Gaming
Special Feature	Backlit, Lightweight, Portable, Programmable Keys
Keyboard Backlighting Color Support	RGB
Style	Rapid Trigger Wired

9. WARRANTY AND SUPPORT

For warranty information and technical support, please refer to the user documentation included in your product packaging or visit the official Logitech G support website.

