

Marley EM-JE123-BL

House of Marley Little Bird True Wireless Earbuds User Manual

Model: EM-JE123-BL

INTRODUCTION

Thank you for choosing the House of Marley Little Bird True Wireless Earbuds. These earbuds are designed to provide a high-quality audio experience with the convenience of true wireless technology, crafted with sustainable materials. This manual provides essential information for setup, operation, and maintenance of your earbuds.



Image: The Little Bird True Wireless Earbuds in blue, showcasing their compact design and bamboo-finished stems.

WHAT'S IN THE BOX

Your House of Marley Little Bird True Wireless Earbuds package includes:

- Little Bird True Wireless Earbuds (Left and Right)
- Charging Case
- USB-C Charging Cable
- User Manual (this document)



Image: The Little Bird Earbuds nestled within their blue charging case, ready for storage or charging.

SETUP

1. Charging the Earbuds and Case

Before first use, fully charge the earbuds and the charging case. The case provides additional charges for extended listening.

1. Place both earbuds into the charging case.
2. Connect the USB-C charging cable to the charging port on the case and plug the other end into a USB power

source.

3. The indicator lights on the case will show charging status. A full charge for the earbuds provides approximately 6 hours of playtime, and the case provides up to 18 additional hours, totaling 24 hours of listening.

2. Pairing with Your Device

Follow these steps to pair your Little Bird Earbuds with a Bluetooth-enabled device:

1. Ensure the earbuds are charged and inside the charging case.
2. Open the charging case lid. The earbuds will automatically enter pairing mode, indicated by a flashing LED light on the earbuds.
3. On your device (smartphone, tablet, computer), go to the Bluetooth settings.
4. Select "Little Bird" from the list of available devices.
5. Once connected, the LED indicator on the earbuds will stop flashing, and you will hear an audible confirmation.



Image: A person wearing a Little Bird earbud, demonstrating its in-ear fit.

OPERATING INSTRUCTIONS

Touch Controls

The Little Bird Earbuds feature intuitive touch controls on each earbud for managing audio playback and calls. You will hear an alert sound with each successful touch input.

Action	Control
Play/Pause	Single tap on either earbud
Next Track	Double tap on the right earbud
Previous Track	Double tap on the left earbud
Answer/End Call	Single tap on either earbud
Reject Call	Press and hold either earbud for 2 seconds
Activate Voice Assistant	Triple tap on either earbud

Calling

The built-in microphone allows for clear communication during phone calls. Use the touch controls as described above to manage calls.

Movie and Gaming Mode

Enhance your audio experience for video content and gaming by activating the dedicated Movie and Gaming Mode. This mode optimizes audio latency for better synchronization between audio and video.

- To activate: Consult the quick start guide or product packaging for the specific touch sequence to enable Movie and Gaming Mode.

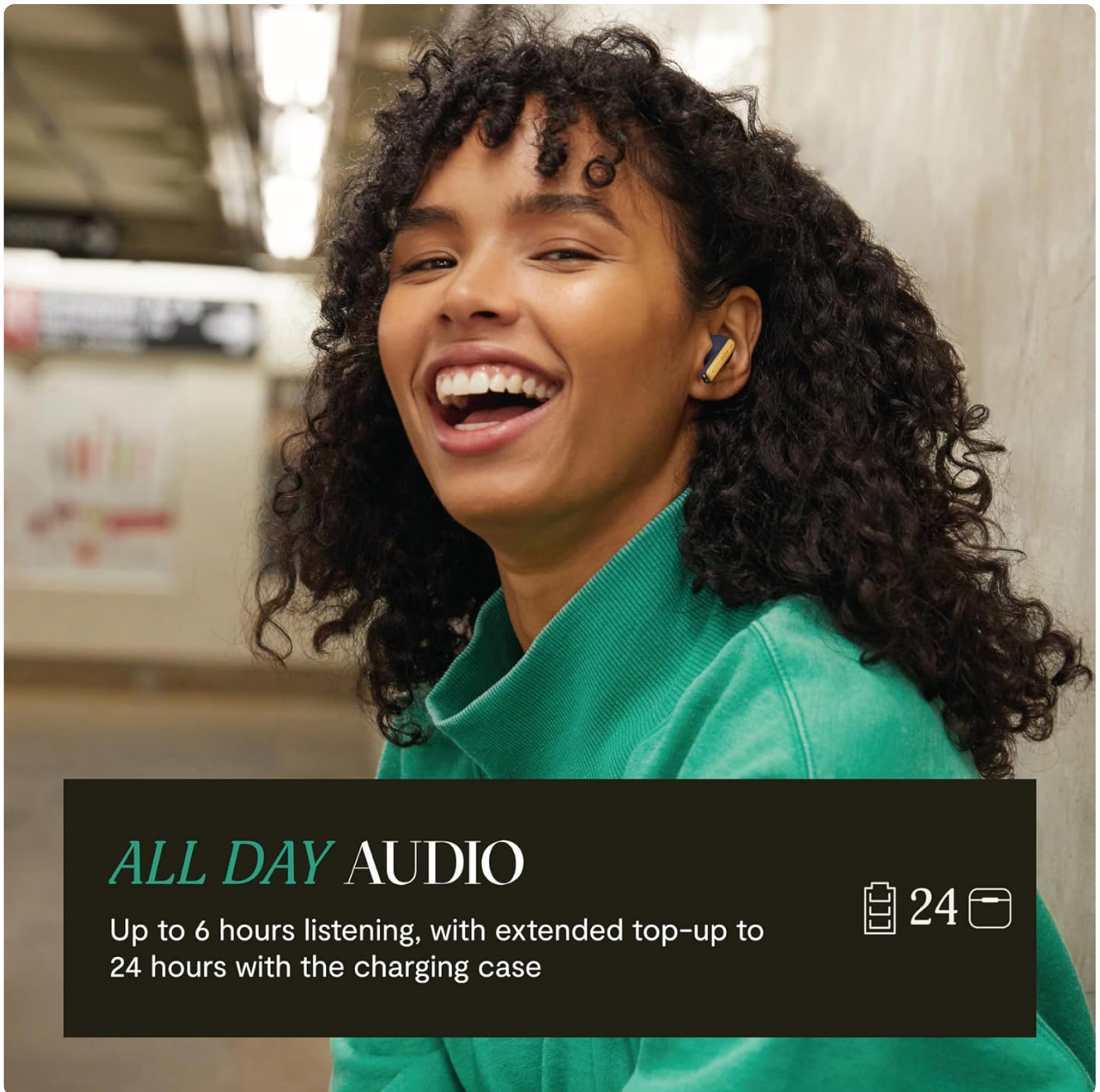


Image: A person enjoying music with the Little Bird earbuds, illustrating the "All Day Audio" capability.

MAINTENANCE

Proper care will extend the life and performance of your Little Bird Earbuds.

- **Cleaning:** Gently wipe the earbuds and charging case with a soft, dry, lint-free cloth. Do not use harsh chemicals or abrasive materials.
- **Storage:** When not in use, store the earbuds in their charging case to protect them and keep them charged.
- **Water Exposure:** These earbuds are not water resistant. Avoid exposure to water, sweat, or excessive moisture.
- **Temperature:** Avoid exposing the earbuds to extreme temperatures (hot or cold).



WATER & SWEAT
RESISTANT



CRYSTAL CLEAR AUDIO

Enhance your audio experience with movie and gaming modes

Image: Hands holding the earbuds and case, emphasizing their construction from sustainable materials like bamboo and recycled plastics.

TROUBLESHOOTING

If you encounter issues with your Little Bird Earbuds, try the following solutions:

Problem	Solution
Earbuds not pairing	<p>Ensure earbuds are charged.</p> <p>Turn off Bluetooth on your device and turn it back on.</p> <p>Forget "Little Bird" from your device's Bluetooth list and re-pair.</p> <p>Place earbuds back in case, close lid, wait 10 seconds, then open lid to re-enter pairing mode.</p>

Problem	Solution
No sound from one earbud	Ensure both earbuds are charged. Place both earbuds back in the case, close the lid, then take them out again. Reset the earbuds (refer to manufacturer's website for specific reset instructions if needed).
Poor sound quality	Ensure earbuds are clean and free of debris. Check the audio source quality. Move closer to your device to avoid interference.
Earbuds not charging	Ensure the charging cable is securely connected to both the case and the power source. Try a different USB-C cable or power adapter. Clean the charging contacts on the earbuds and inside the case.

SPECIFICATIONS

Feature	Detail
Model Name	Little Bird
Model Number	EM-JE123-BL
Connectivity Technology	Wireless (Bluetooth)
Bluetooth Version	5.0
Earbud Playtime	Up to 6 hours
Total Playtime (with case)	Up to 24 hours
Charging Interface	USB-C
Control Method	Touch
Built-in Microphone	Yes
Water Resistance Level	Not Water Resistant
Materials	Bamboo, natural wood fibre, mica composites, recycled plastics
Item Weight	0.03 Kilograms (earbuds) / 1.06 ounces (total product)
Product Dimensions	0.79 x 2.2 x 1.73 inches
UPC	846885011560

WARRANTY AND SUPPORT

House of Marley products are designed with quality and durability in mind. For detailed warranty information and customer support, please visit the official House of Marley website or contact their customer service.

Online Support: www.thehouseofmarley.com/support

Manufacturer: House of Marley, FKA Brands

UPC: 846885011560

© 2023 House of Marley. All Rights Reserved.

The Bluetooth® word mark and logos are registered trademarks owned by Bluetooth SIG, Inc. and any use of such marks by House of Marley is under license.