

## wheelfun LR960

# wheelfun LESU LR960 1/14 RC Hydraulic Excavator Instruction Manual

Model: LR960 (Item Model Number: TH24404-AMZUS2-S)

## 1. PRODUCT OVERVIEW

The wheelfun LESU LR960 is a 1/14 scale Ready-To-Run (RTR) RC hydraulic excavator model. This highly detailed and functional model is designed for hobbyists interested in realistic remote-controlled construction equipment. It features a robust metal construction, a sophisticated hydraulic system, and a comprehensive control setup.

### Key Features:

- **Hydraulic Power System:** The entire machine operates on hydraulic power, with 90% of the fixed oil circuit welded from pure copper for stability and sealing.
- **Modular Design with Lighting:** Features a modular design with full lighting, including one warning light, two simulated GPS units, and nine openable doors for convenient operation.
- **Dual-Pump Hydraulic Workstation:** Equipped with a dual-pump, dual-power system for balanced power distribution and coordinated, smooth movements. The oil tank includes a visible window and hydraulic oil filter.
- **Durable Metal Construction:** Composed of 95% metal parts, including an all-metal track and copper-material travel frame, with steel counterweights for stability.
- **Hydraulic Travel and Rotation:** Features hydraulic power for both track travel and 360° continuous rotation of the hydraulic crusher.
- **Adjustable Telescopic Travel Frame:** Includes an adjustable-width, dual-hydraulic-cylinder-powered telescopic travel frame with adjustable guide wheels for maneuverability.
- **Advanced Rotation System:** Integrates a seven-channel oil slip ring for high precision, excellent sealing, and stable hydraulic power to chassis components.
- **Simulated Rotary Support Turntable:** Newly designed for easy installation, maintenance, and space-saving.

- **Detailed Cab:** Features a simulated stainless steel cab protective net, a hydraulically powered lifting cab, and an electronic display screen for real-time monitoring.
- **Versatile Arm and Attachments:** Excavator arm processed through full sheet metal welding. Equipped with a 13-channel quick-release oil circuit system and magnetic electrical connection. Includes a demolition arm stand for quick switching between demolition and excavator booms. Compatible with LESU AC360 excavator attachments.



Figure 1: Front-side view of the LESU LR960 1/14 RC Hydraulic Excavator with its arm extended and bucket attached.

## 2. SETUP INSTRUCTIONS

Before operating your LESU LR960 hydraulic excavator, please follow these setup steps carefully.

### 2.1 Unpacking and Inspection

- Carefully remove all components from the packaging.
- Inspect the excavator for any visible damage during transit. Contact customer support immediately if any damage is found.
- Verify all included items are present: 1/14 RC Hydraulic Excavator Model, Metal Rack of Arm, ESC, Motor, Servo, Light System, Hydraulic Motor Driving Wheel, Hydraulic System with 13-ways

Directional Valve, Integrated Pump, Manual Quick Release Coupler, Rotating Warning Lights, Metal GPS, Frsky XE Customized Remote Controller and Receiver, Battery.

## 2.2 Battery Installation and Charging

- Locate the battery compartment on the excavator.
- Connect the provided battery to the excavator's power connector.
- *Note: A charger is not included with this model. Please use a compatible charger for the provided battery type (e.g., LiPo charger). Ensure the battery is fully charged before first use.*
- Securely close the battery compartment.

## 2.3 Remote Controller Setup

- Install appropriate batteries (not included) into the Frsky XE Customized Remote Controller.
- Power on the remote controller.
- Refer to the Frsky XE remote controller manual for specific binding procedures if the excavator and controller are not already paired.

## 2.4 Hydraulic Oil Filling

- *Note: Hydraulic oil is not included with this model. Use only recommended hydraulic oil for RC models.*
- Locate the hydraulic oil reservoir, identifiable by its visible large window and filter.
- Carefully fill the reservoir with the appropriate hydraulic oil, ensuring not to overfill. Monitor the oil level through the visible window.
- After filling, operate the hydraulic functions slowly to bleed any air from the system. Top up oil if necessary.



Figure 2: Rear view of the LESU LR960 1/14 RC Hydraulic Excavator, showing the detailed bodywork and hydraulic lines.

## 3. OPERATING INSTRUCTIONS

Familiarize yourself with the remote controller and the excavator's functions before operating in a real

environment.

### 3.1 Powering On

- Ensure the remote controller is powered on first.
- Turn on the power switch on the excavator. The light system will activate.
- Wait for the remote controller and excavator to establish a connection.

### 3.2 Basic Controls (Frsky XE Remote Controller)

The Frsky XE remote controller provides precise control over the excavator's functions. Refer to the controller's specific manual for detailed button assignments.

- **Track Movement:** Typically controlled by joysticks for forward, backward, and turning movements. The adjustable-width travel frame can be controlled via a dedicated channel.
- **Boom, Arm, and Bucket:** Controlled by joysticks, allowing for independent movement of the main boom, stick arm, and bucket. The 13-way directional valve enables complex hydraulic movements.
- **Turntable Rotation:** A dedicated control allows for 360° continuous rotation of the excavator's upper structure.
- **Hydraulic Crusher/Attachments:** If equipped, the hydraulic crusher or other attachments are controlled via specific channels on the remote. The quick-release coupler allows for easy attachment changes.
- **Lights and Warning Lights:** Operated via switches or buttons on the remote controller.
- **Cab Lift:** The hydraulically powered lifting cab can be raised or lowered via a designated control.

### 3.3 Operating Tips

- Start with slow, deliberate movements to get accustomed to the controls.
- Avoid sudden or jerky movements, especially with hydraulic functions, to prevent damage and ensure smooth operation.
- Monitor the electronic display screen in the cab for real-time information on electrical components.
- When switching attachments, ensure the excavator is powered off and the hydraulic system is depressurized.

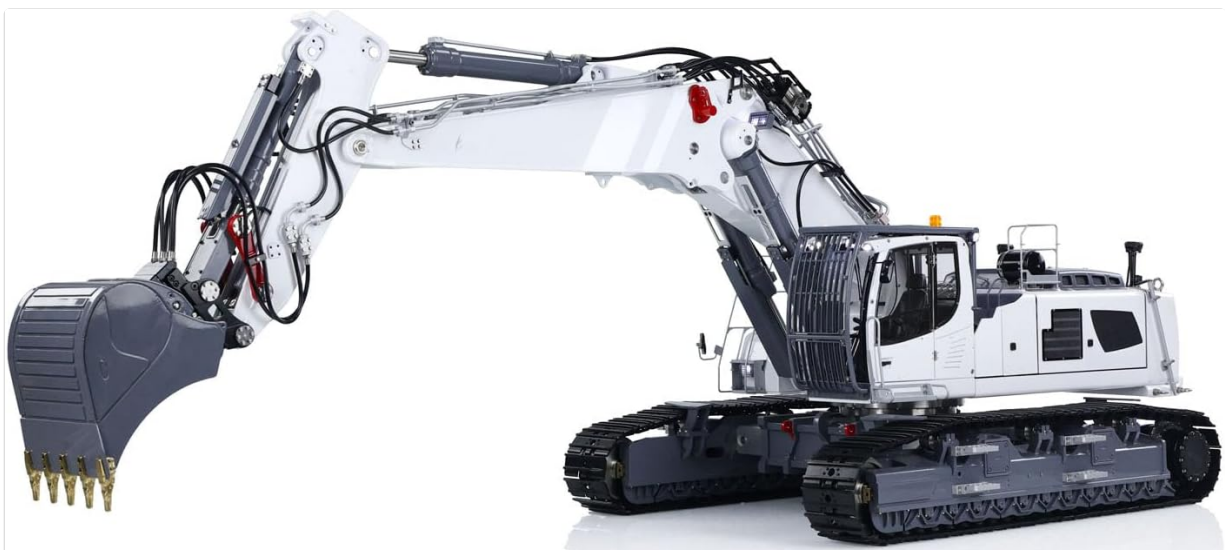


Figure 3: Side view of the LESU LR960 1/14 RC Hydraulic Excavator with its arm raised, showcasing the hydraulic cylinders.

## 4. MAINTENANCE

---

Regular maintenance ensures the longevity and optimal performance of your LESU LR960 excavator.

### 4.1 General Cleaning

- After each use, clean the excavator to remove dirt, dust, and debris. Use a soft brush or compressed air.
- Avoid using water directly on electronic components. If cleaning with a damp cloth, ensure all parts are dry before storage or next use.

### 4.2 Hydraulic System Maintenance

- **Check Hydraulic Oil Level:** Regularly inspect the hydraulic oil level through the visible window. Top up with recommended hydraulic oil as needed.
- **Inspect for Leaks:** Periodically check all hydraulic lines, cylinders, and connections for any signs of leaks. Address leaks promptly to prevent system damage.
- **Filter Inspection:** Inspect the hydraulic oil filter for contamination. Replace if necessary.

### 4.3 Track and Undercarriage

- Clean debris from the tracks and undercarriage regularly to prevent binding and wear.
- Inspect track links and drive sprockets for wear or damage.

### 4.4 Battery Care

- Always disconnect the battery from the excavator when not in use.
- Store batteries in a cool, dry place, away from direct sunlight and extreme temperatures.
- Follow the manufacturer's guidelines for charging and discharging LiPo batteries.



Figure 4: Side profile of the LESU LR960 1/14 RC Hydraulic Excavator, highlighting the track system and cab details.

## 5. TROUBLESHOOTING

---

This section provides solutions to common issues you might encounter with your excavator.

Problem	Possible Cause	Solution
Excavator does not power on.	<ul style="list-style-type: none"> <li>• Battery not charged.</li> <li>• Battery not connected properly.</li> <li>• Power switch off.</li> </ul>	<ul style="list-style-type: none"> <li>• Charge the battery fully.</li> <li>• Ensure battery is securely connected.</li> <li>• Turn on the excavator's power switch.</li> </ul>
Controls are unresponsive.	<ul style="list-style-type: none"> <li>• Remote controller not powered on.</li> <li>• Remote controller and excavator not bound.</li> <li>• Remote controller batteries low.</li> </ul>	<ul style="list-style-type: none"> <li>• Power on the remote controller.</li> <li>• Perform the binding procedure as per the remote controller manual.</li> <li>• Replace or recharge remote controller batteries.</li> </ul>
Hydraulic functions are weak or slow.	<ul style="list-style-type: none"> <li>• Low hydraulic oil level.</li> <li>• Air in the hydraulic system.</li> <li>• Battery charge low.</li> </ul>	<ul style="list-style-type: none"> <li>• Check and top up hydraulic oil.</li> <li>• Operate functions slowly to bleed air.</li> <li>• Recharge the excavator's battery.</li> </ul>
Tracks are not moving smoothly.	<ul style="list-style-type: none"> <li>• Debris in tracks.</li> <li>• Track links or drive sprockets damaged.</li> </ul>	<ul style="list-style-type: none"> <li>• Clean tracks and undercarriage.</li> <li>• Inspect and replace damaged components.</li> </ul>

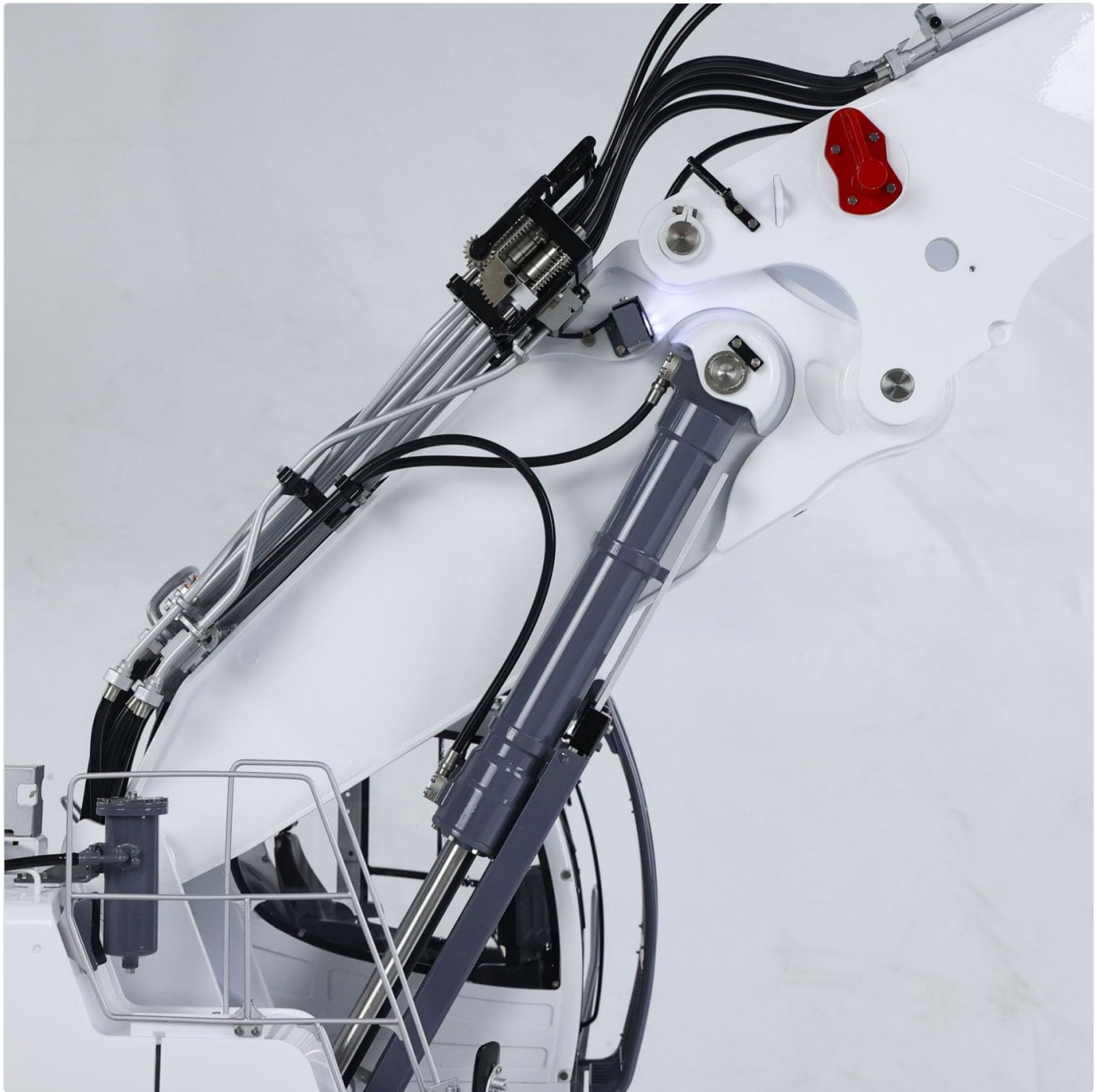


Figure 5: Close-up view of the LESU LR960 1/14 RC Hydraulic Excavator's cab, showing interior details and protective netting.

## 6. SPECIFICATIONS

---

Feature	Detail
Brand	LESU (wheelfun)
Scale	1/14
Item Condition	New, Painted and Assembled (RTR)
Material	Metal, Plastic (95% metal parts, including tracks and travel frame)
Net Weight (LR960 Digging Arm Excavator B0028)	Approximately 38.5 KG (151.8 pounds)
Tracks Color	Black
Excavator Color	White
Product Dimensions	44 x 24 x 20 inches
Item Model Number	TH24404-AMZUS2-S
Recommended Age	21 years and up
Included Components	Excavator Model, Metal Rack of Arm, ESC, Motor, Servo, Light System, Hydraulic Motor Driving Wheel, Hydraulic System with 13-ways Directional Valve, Integrated Pump, Manual Quick Release Coupler, Rotating Warning Lights, Metal GPS, Frsky XE Remote Controller and Receiver, Battery.
Not Included	Sound System, Charger, Hydraulic Oil.

## 7. WARRANTY AND SUPPORT

wheelfun is committed to providing quality products and customer satisfaction.

### 7.1 Damage Upon Arrival

If the item is damaged out of the box, please contact customer support. A free replacement part can be resent.

### 7.2 Technical Support and Maintenance Services

A professional after-sales team and technical maintenance team are available. Technicians can provide guidance in English through video or text for repairs and troubleshooting.

For support, please visit the wheelfun Store on Amazon or contact their customer service directly.