

RoyalCraft ZWD008

RoyalCraft Sideboard Buffet Kitchen Storage Cabinet

Model: ZWD008

Instruction Manual

1. PRODUCT OVERVIEW

The RoyalCraft Sideboard Buffet Kitchen Storage Cabinet (Model ZWD008) is a versatile furniture piece designed for various rooms including the dining room, living room, hallway, kitchen, and bedroom. It features a rustic design with carved doors, a weathered texture, and antique metal handles, providing both aesthetic appeal and functional storage.

This cabinet is constructed from solid wood and P2 Grade MDF, ensuring durability and stability. It includes two doors with internal shelving for organized storage.

2. PRODUCT SPECIFICATIONS

Feature	Detail
Brand	RoyalCraft
Model Number	ZWD008
Color	Natural
Material	Solid Wood, P2 Grade MDF
Product Dimensions (D x W x H)	15.7" x 29.5" x 29.7"
Item Weight	35 Pounds
Weight Capacity Maximum	200 Pounds (Top), 30 Pounds (Shelf), 50 Pounds (Bottom)

Number of Doors	2
Number of Shelves	2 (internal)
Assembly Required	Yes
Installation Type	Freestanding
Mounting Type	Floor Mount

Note: All dimensions are approximate and may vary slightly.

3. SAFETY INFORMATION

Anti-Tipping Kit Installation

To prevent accidental tipping and ensure a safe environment, especially in households with children or pets, it is crucial to install the included anti-tipping kit. Follow these general steps:

1. Locate a suitable wall stud behind the cabinet.
2. Attach one bracket to the back of the cabinet near the top edge using the provided screws.
3. Attach the second bracket to the wall stud, ensuring it aligns with the cabinet bracket.
4. Secure the cabinet to the wall using the strap or cable provided, connecting both brackets.

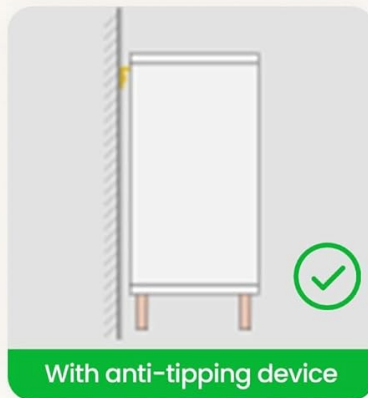
Always ensure the cabinet is placed on a level surface. Do not allow children to climb on the furniture.

Anti-Tipping Kit

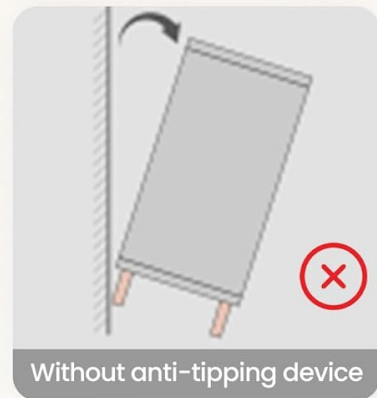
Secures the dresser to the wall, preventing accidental tipping and ensuring a safe environment for families



Anti-tipping kit



With anti-tipping device



Without anti-tipping device

Figure 3.1: Anti-Tipping Kit. This image displays the components of the anti-tipping kit and provides visual guidance on how to secure the cabinet to a wall to prevent it from falling over. It highlights the importance of using the device for safety.

4. ASSEMBLY INSTRUCTIONS

This RoyalCraft cabinet requires assembly. Please ensure all parts are present before beginning. It is recommended to assemble the unit on a soft, clean surface to prevent scratches. A second person may be helpful for certain steps.

General Assembly Steps:

1. Unpack all components and hardware. Verify against the parts list (not provided in this manual, refer to packaging).
2. Attach the legs to the base of the cabinet.
3. Assemble the main frame of the cabinet.
4. Install the internal shelves at the desired height.
5. Attach the doors, ensuring they open and close smoothly.
6. Install the decorative handles.
7. Finally, install the anti-tipping kit as described in Section 3.

For detailed, step-by-step instructions, please refer to the assembly manual included in your product packaging.

5. USAGE AND FEATURES

The RoyalCraft Sideboard Buffet Kitchen Storage Cabinet offers practical storage solutions with its thoughtful design and features:

- **Ample Storage:** Two internal shelves provide space for various items, helping to keep your living area organized.
- **Magnetic Cabinet Doors:** Equipped with magnetic catches for effortless access and secure closure, keeping contents neatly concealed.
- **Refined Layered Wave Carving:** The top edge features a distinctive layered wave carving, adding an elegant touch.
- **Rich Wood Grain Desktop:** The cabinet top showcases a natural wood grain, offering a timeless look and durable surface.
- **Vintage-Style Painted Handles:** Antique metal handles complement the rustic aesthetic and provide a comfortable grip.
- **Exquisite Carved Patterns:** The cabinet doors feature intricate carved patterns, enhancing the French country charm.
- **Stylish Wood Legs:** The gourd-shaped legs provide stable support and contribute to the cabinet's overall design.

Product Dimensions



Figure 5.1: Product Dimensions. This image illustrates the key dimensions of the cabinet, including its overall height, width, depth, internal shelf spacing, and ground clearance.

Large Capacity Drawers

Offer ample space for clothes, accessories, and daily essentials, keeping your items organized and accessible.



Figure 5.2: Internal Storage Capacity. This image demonstrates the cabinet's storage capabilities, showing how the two internal shelves can accommodate various items for organization.



Stylish Wood Legs



Vintage-Style Painted Handle



Exquisite Carved Patterns



Graceful Wavy Bottom Edge

Figure 5.3: Design Details. This collage provides close-up views of the cabinet's aesthetic features, such as the carved door patterns, antique handles, and unique leg design.



Refined Layered Wave Carving

Adds an eye-catching touch, bringing both elegance and a distinctive flair to any room

Magnetic Cabinet Door

Offers effortless access and secure closure



Rich Wood Grain Desktop

Highlights natural beauty and texture, offering a timeless look that enhances the overall design

Figure 5.4: Functional and Aesthetic Details. This image highlights the refined layered wave carving, the magnetic door mechanism for secure closure, and the rich wood grain of the desktop.

Product Videos:

Your browser does not support the video tag.

Video 5.1: The Beauty of "Wash Grey Color". This video showcases the cabinet's aesthetic, focusing on its wash grey finish and overall appearance in a home setting.

Your browser does not support the video tag.

Video 5.2: 49.2" Natural - Actual Shooting Scenes (Turn Off the Light). This video provides a view of a similar RoyalCraft cabinet in a natural finish, demonstrating its appearance in different lighting conditions. Note: This video features a larger variant (49.2"W) but illustrates the general style and finish.

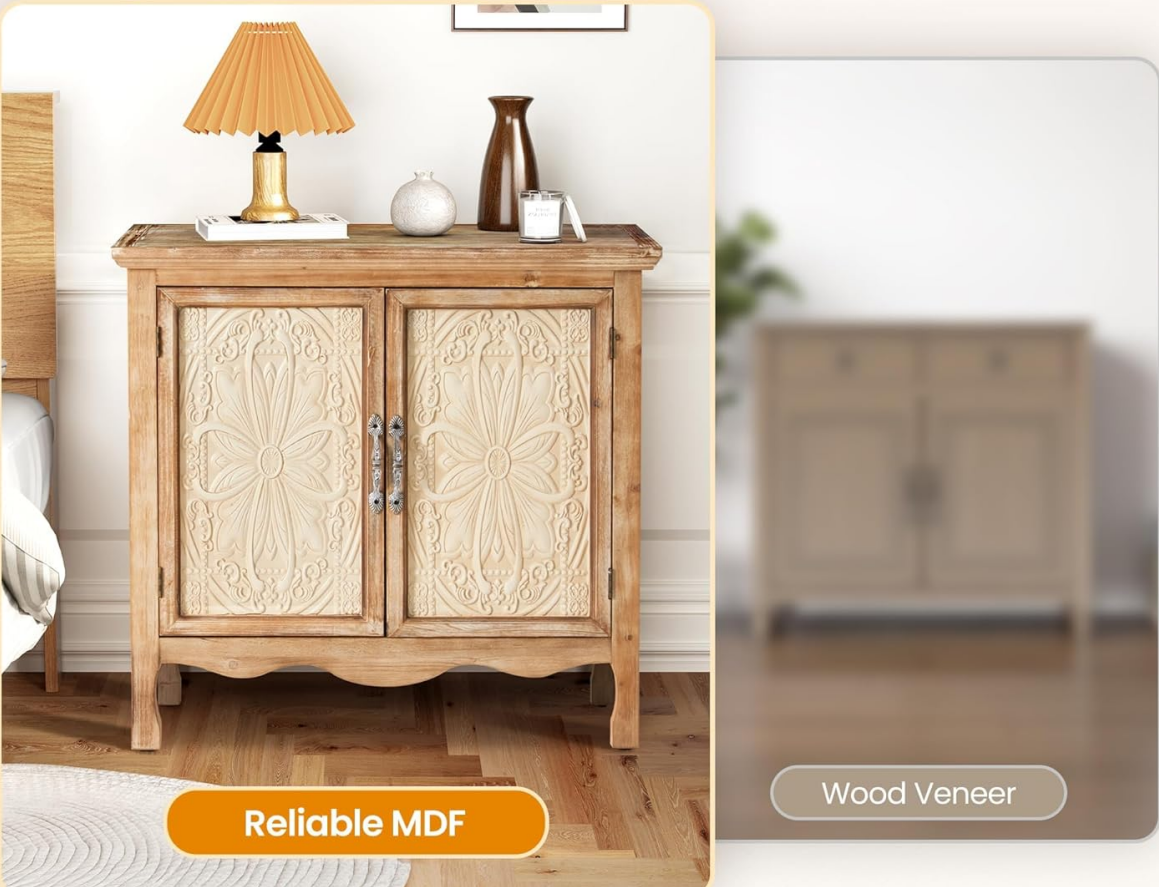
Your browser does not support the video tag.

Video 5.3: The Beauty of "2 Drawer". This video highlights a RoyalCraft cabinet with two drawers, showcasing its design and functionality. Note: This video features a different model with drawers, but illustrates the brand's craftsmanship and style.

6. CARE AND MAINTENANCE

Proper care and maintenance will help preserve the beauty and longevity of your RoyalCraft cabinet.

- **Cleaning:** Wipe surfaces with a soft, damp cloth. Avoid harsh chemicals or abrasive cleaners, which can damage the finish.
- **Spills:** Immediately blot any spills with a clean, dry cloth to prevent staining or water damage.
- **Heat and Moisture:** Protect the cabinet from direct sunlight, excessive heat, and moisture. Use coasters under hot or wet items.
- **Humidity:** Maintain a consistent humidity level in the room to prevent wood from warping or cracking.
- **Moving:** When moving the cabinet, always lift it rather than dragging it to prevent damage to the legs and structure.



Reliable MDF

Wood Veneer

- ✓ 1. Enhanced durability & high stability
- ✓ 2. Resists warping and moisture
- ✓ 3. Smooth surface & seamless texture
- ✓ 4. Easy to clean & maintain

- ✗ 1. Prone to cracking or warping
- ✗ 2. Affected by humidity and mold
- ✗ 2. Has cracks and color variations
- ✗ 4. High Maintenance

Figure 6.1: Material Benefits (Reliable MDF). This image illustrates the advantages of using P2 Grade MDF in the cabinet's construction, emphasizing its durability and resistance to common issues like warping and moisture, which simplifies maintenance.

7. TROUBLESHOOTING

If you encounter any issues with your RoyalCraft cabinet, please consider the following common solutions:

- **Wobbly Cabinet:** Ensure all screws and fasteners are tightened. Verify the cabinet is on a level surface;

use furniture glides or shims if necessary.

- **Doors Not Closing Properly:** Check the door hinges for proper alignment. Adjust if needed. Ensure no items inside are obstructing the door closure.
- **Scratches or Dents:** For minor imperfections, wood repair kits or touch-up pens can be used. Consult a professional for significant damage.

If problems persist, please contact RoyalCraft customer support for further assistance.

8. WARRANTY AND SUPPORT

RoyalCraft is committed to providing quality products. While specific warranty details are typically provided with your purchase documentation, general support is available.

- **Return Policy:** This product typically includes a 30-day return/replacement policy. Please refer to your purchase platform's specific terms.
- **Protection Plans:** Extended protection plans (e.g., 2-Year or 3-Year Protection Plans) may be available for purchase separately to cover unforeseen damages or defects beyond the standard return period.
- **Customer Service:** For any questions, missing parts, or assistance, please contact RoyalCraft customer support. Refer to your product packaging or the retailer's website for contact information.