



[Manuals.plus](#) /

› [JUBEST](#) /

› JUBEST 24x84 Bifold Barn Door Instruction Manual

## JUBEST 24x84

# JUBEST 24"x 84" Bifold Barn Door Instruction Manual

Model: 24x84

## 1. INTRODUCTION

---

This manual provides detailed instructions for the installation, operation, and maintenance of your JUBEST 24"x 84" Bifold Barn Door. Please read all instructions carefully before beginning installation to ensure proper assembly and safe use. Keep this manual for future reference.



Image 1.1: JUBEST 24x84 Bifold Barn Door in a home setting.

## 2. SAFETY INFORMATION

---

- Always wear appropriate safety gear, including gloves and eye protection, during installation.
- Ensure the mounting surface is structurally sound and capable of supporting the door's weight.
- Keep children and pets away from the installation area.
- Do not modify the door or hardware components, as this may compromise safety and void the warranty.
- If any parts are missing or damaged, do not proceed with installation. Contact customer service for assistance.

## 3. PACKAGE CONTENTS

---

Verify that all components listed below are present and undamaged before beginning installation.

# PACKAGE LIST

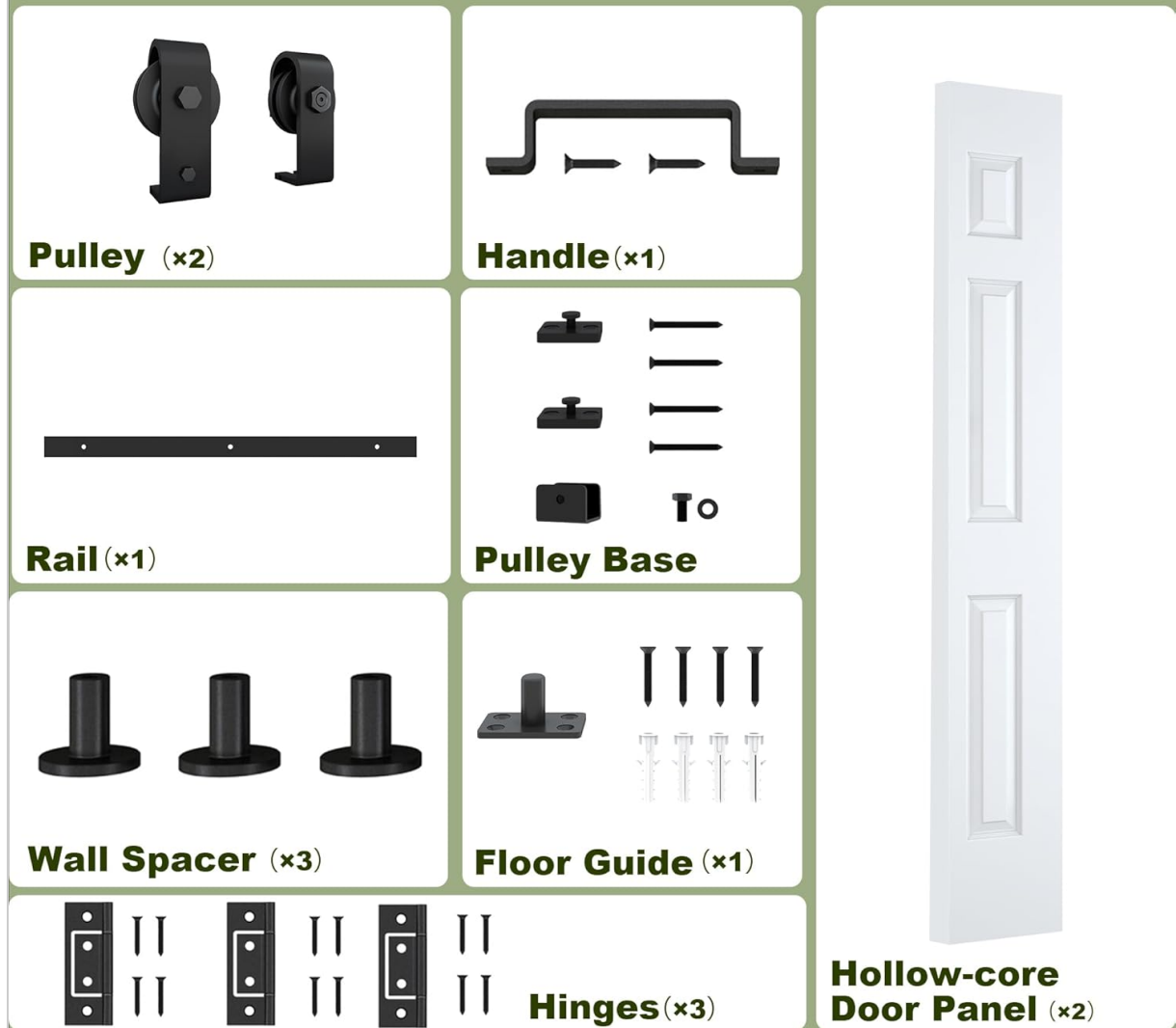


Image 3.1: Included components for the JUBEST Bifold Barn Door.

- 2x Bifold Door Panels (Hollow-core & MDF Molded Panel)
- 1x 28" Rail
- 2x Rollers (Pulleys)
- 2x Roller Rotating Bases (Pulley Bases)
- 1x Roller Fixator
- 4x Wall Spacer Kits
- 3x Hinges
- 1x Floor Guide
- 1x Handle
- Step-by-step installation manual (this document)

## 4. SPECIFICATIONS

Feature	Detail
Brand	JUBEST

Feature	Detail
Model	24" x 84" Bifold Barn Door
Color	White (Primed)
Material	Engineered Wood (Hollow-core & MDF Molded Panel)
Door Panel Construction	HDF Door Skin, Honeycomb Paper, Solid Pine Wood
Item Weight	38 Pounds
Hardware Material	Heavy-duty Carbon Steel, Nylon Wheels
Required Assembly	Yes



Option Size	A Track Length	B Door Panel	C Door Panel Height	D Fit Opening Width
24" x 84"	28"	12"	84"	≤22"
30" x 84"	34"	15"	84"	≤28"
36" x 84"	40"	18"	84"	≤34"

Image 4.1: Bifold Door Size Chart for various models.

## DOOR PANEL CONSTRUCTION



Image 4.2: Detailed view of the door panel construction.

## 5. INSTALLATION GUIDE

### 5.1 Pre-Installation Checks

- Unpack all components and verify against the package contents list.
- Inspect all parts for any damage. Report any issues to customer service before proceeding.
- Measure your door opening carefully. The recommended opening width for the 24"x 84" door is less than or equal to 22 inches.
- Ensure the wall above the opening is suitable for mounting the track and can support the door's weight.

### 5.2 Hardware Assembly

The included hardware kit is designed for smooth and quiet operation.

# HIGH-QUALITY HARDWARE KIT



**360° free rotation,  
saving space.**

**Comfortable edge.  
Easy to install.**



**Quality hangers,  
slide smoothly and quietly.**

Image 5.1: High-quality hardware kit details.

1. Attach the hinges to the two door panels according to the pre-drilled holes. Ensure the hinges allow for proper folding action.
2. Install the handle onto one of the door panels at the desired height.
3. Assemble the rollers (pulleys) onto the roller rotating bases.

## 5.3 Door Panel Assembly

The door panels feature a double-sided molded design and a primed surface ready for painting.

## DOUBLE-SIDED MOLDED DESIGN

**FRONT**



**BACK**

Image 5.2: Double-sided molded design of the door panels.



Image 5.3: Door panels are primed and ready for painting or staining.

4. Connect the two door panels using the installed hinges.

#### 5.4 Mounting the Track and Door

5. Position the rail above the door opening. Use a level to ensure it is perfectly horizontal. Mark the drilling points for the wall spacer kits.
6. Drill pilot holes and secure the wall spacer kits to the wall.
7. Attach the rail to the wall spacer kits.
8. Insert the assembled rollers into the rail.
9. Lift the assembled door panels and attach the rollers to the top edge of the door panels.
10. Install the floor guide at the bottom center of the door opening, ensuring it aligns with the door's path.
11. Adjust the roller fixator to prevent the door from coming off the track.

#### 5.5 Final Adjustments

- Test the door's sliding and folding action. Ensure it moves smoothly and quietly.
- Make any necessary adjustments to the rollers or floor guide for optimal performance.

## 6. OPERATION

The JUBEST Bifold Barn Door is designed for easy operation, providing space-saving functionality.



Image 6.1: Examples of the bifold door in various room settings.

- To open the door, gently pull the handle to fold the panels inward and slide them along the track.
- To close the door, push the panels back into position until they are fully extended and aligned.
- The nylon wheels ensure smooth and quiet sliding.

## 7. MAINTENANCE

- **Cleaning:** Wipe the door panels with a soft, damp cloth. Avoid abrasive cleaners that may damage the primed surface.
- **Hardware:** Periodically check all screws and fasteners for tightness. Lubricate the rollers and track with a silicone-based lubricant if any resistance or noise is observed during operation.
- **Painting:** If you choose to paint the door, ensure the surface is clean and dry. Use a high-quality primer and paint suitable for engineered wood.

## 8. TROUBLESHOOTING

- **Door does not slide smoothly:** Check the track for obstructions. Ensure rollers are clean and lubricated. Verify the track is level and securely mounted.
- **Door panels are misaligned:** Adjust the roller positions on the track or check hinge tightness. Ensure the floor guide is correctly positioned.
- **Door appears warped:** Inspect the door panels upon arrival for any manufacturing defects. If warping is significant and affects functionality, contact customer service immediately.
- **Missing parts or unclear instructions:** Refer to the package contents list. If parts are missing or the manual is unclear, contact JUBEST customer service for assistance.

## 9. WARRANTY AND SUPPORT

---

JUBEST is committed to providing quality products and customer satisfaction. For any quality problems, missing parts, or installation issues, please contact our professional customer service team. We are available to assist you.

Please retain your proof of purchase for warranty claims.