

TOONIOOS B0DJ7B3BZR

TOONIOOS Wireless Stainless Steel Pet Water Fountain (3.2L) User Manual

Model: B0DJ7B3BZR | Brand: TOONIOOS

INTRODUCTION

Thank you for choosing the TOONIOOS Wireless Stainless Steel Pet Water Fountain. This automatic water dispenser is designed to provide fresh, filtered water for your pets, promoting better hydration and overall health. Its wireless design offers flexibility in placement, while multiple operating modes cater to your pet's needs. Please read this manual thoroughly before use to ensure proper setup, operation, and maintenance.

PRODUCT FEATURES

- **Wireless Operation:** Eliminates tripping hazards and chewing risks associated with power cords, allowing flexible placement anywhere in your home.
- **Three Operating Modes:**
 - **Sensor Mode:** Activates water flow for 6 seconds when a pet is detected within 1.5 meters.
 - **Timer Mode:** Dispenses water for 10 seconds every 15 minutes.
 - **Continuous Mode:** Provides a constant water flow when connected to a power source.
- **Long-lasting Battery:** Equipped with a 4000mAh rechargeable battery, providing up to 60 days of operation on a single charge.
- **Large Capacity:** 3.2-liter stainless steel reservoir reduces the frequency of refills.
- **Multi-stage Filtration:** Filters impurities, removes odors, and softens water, ensuring clean and oxygen-rich water.
- **Durable Material:** Constructed from 304 stainless steel, resistant to rust and corrosion.
- **Quiet Operation:** Operates at a noise level of ≤ 25 dB, minimizing disturbance.
- **Easy to Clean:** Designed for simple disassembly and cleaning of all components, except the main control module.
- **Visible Water Level Window:** Allows easy monitoring of the water level without opening the lid.

WHAT'S IN THE BOX

Upon unpacking, please ensure all the following components are present:

- 1x TOONIOOS Pet Water Fountain (Stainless Steel Bowl and Lid)
- 1x Wireless Pump Module
- 1x USB Charging Cable
- 1x Cleaning Brush
- 1x Carbon Filter
- 1x Sponge Filter
- 1x User Manual

What's in the box?



Figure 1: Included Components

SETUP INSTRUCTIONS

- 1. Prepare the Filter:** Before first use, rinse the carbon filter and sponge filter thoroughly under running water. Soak the carbon filter in water for 5-10 minutes to remove any loose carbon dust.
- 2. Assemble the Filter:** Place the sponge filter into the designated slot on the pump module, then place the carbon filter on top of the sponge filter.

3. **Clean the Fountain:** Wash the stainless steel bowl and lid with mild soap and water. Rinse thoroughly.
4. **Fill the Reservoir:** Fill the stainless steel bowl with clean water up to the "MAX" line indicated inside the bowl. Do not overfill.



Figure 2: Water Level Window and MAX Fill Line

5. **Place the Pump:** Carefully place the wireless pump module into the designated slot on the lid, ensuring it is securely seated.
6. **Secure the Lid:** Place the lid onto the stainless steel bowl, ensuring it fits snugly.
7. **Initial Charge:** For optimal performance, fully charge the pump module using the provided USB cable before first use. The indicator light will show charging status.

OPERATING MODES

The fountain offers three distinct operating modes to suit your pet's preferences and conserve battery life. Press the mode button on the pump module to cycle through the modes.

Three Water Modes

Meet the needs of you and your pet



Sensor Mode

Activate 6s water flow when pet comes



Timed Mode

Activate 10s water flow every 15 min



Continuous Mode

Give you more choices

Figure 3: Three Water Modes

- **Sensor Mode:** The fountain will activate and dispense water for 6 seconds when your pet approaches within 1.5 meters. This mode is energy-efficient and encourages pets to drink when they are near.
- **Timer Mode:** Water will flow for 10 seconds every 15 minutes. This provides regular access to fresh water without constant motion detection.
- **Continuous Mode:** For a constant flow of water, connect the pump module to a power source using the USB cable. This mode is ideal for pets who prefer a continuous stream or for households with multiple pets.

Your browser does not support the video tag.

Video 1: Demonstration of the TOONIOOS Wireless Pet Water Fountain in operation, showcasing water flow and pet interaction.

BATTERY AND CHARGING

The fountain is equipped with a 4000mAh rechargeable battery, offering extended use without constant charging.

- A full charge can last up to 60 days, depending on the selected operating mode and frequency of use.
- When the battery is low, an indicator light on the pump module will turn red.
- Connect the USB charging cable to the pump module and a suitable USB power adapter (not included) to charge. The indicator light will blink blue during charging and turn solid blue when fully charged.
- You can use the fountain in Continuous Mode while it is charging.

Rechargeable Battery

Long-lasting power for 60 days



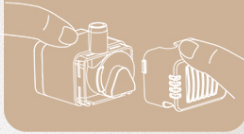
Figure 4: Charging the Wireless Pump Module

Printemps Vivant, Garde à l'aise

Système de circulation d'eau, taux d'utilisation > 90%, réduction des déchets

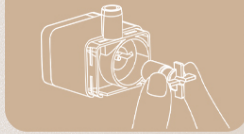
0.8W

01



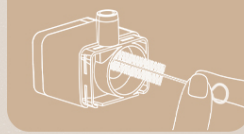
(1) Retirez le couvercle de la pompe et le capuchon de la turbine

02



(2) Retirez la turbine

03



(3) Nettoyez les composants avec la brosse de nettoyage



Conseils: Pour une durée de vie plus longue de la pompe, nous recommandons de nettoyer la pompe à eau toutes les 1 à 2 semaines

Figure 5: LED Indicator Lights for Battery Status

MAINTENANCE AND CLEANING

Regular cleaning and filter replacement are crucial for maintaining water quality and extending the life of your fountain.

Disassembly for Cleaning (4 Steps)

1. Separate the pump module from the fountain lid.
2. Remove the stainless steel bowl from the water reservoir base.
3. Detach the black components (filter housing) from the stainless steel bowl.
4. Disconnect the connecting tube from the water pump.



Figure 6: Disassembly Steps

Cleaning Guidelines

- Wash the stainless steel bowl, lid, and filter housing with mild soap and water. Rinse thoroughly.
- **Important: Do NOT wash or immerse the main control module (pump) in water.** Use a damp cloth to wipe its exterior if needed.
- Do not wash the product with hot water or clean it in a disinfection cabinet.
- Clean the pump every 1 to 2 weeks for longer pump life. Remove the pump cover and turbine, then clean

components with the provided brush.



Figure 7: Cleaning the Pump

Filter Replacement

- The multi-stage filtration system includes a carbon filter and a sponge filter.
- Replace the filters regularly (typically every 2-4 weeks, depending on usage and pet hair).
- Replacement filters can be purchased from authorized TOONIOOS retailers.

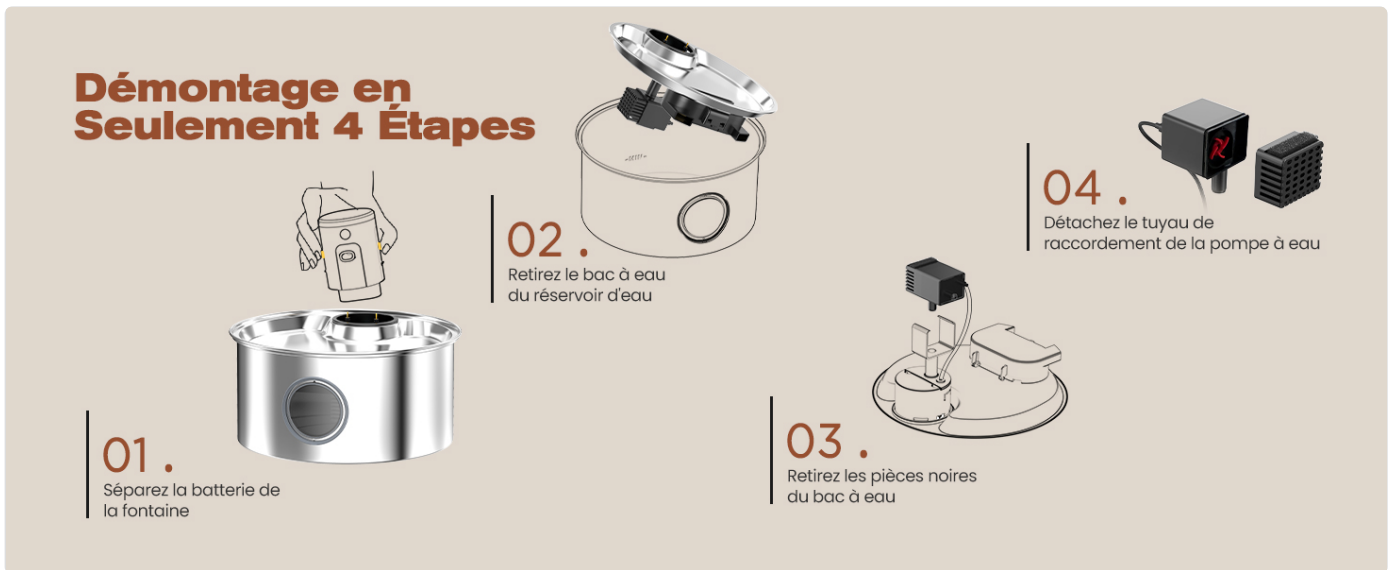


Figure 8: Multi-stage Filtration System

TROUBLESHOOTING

Problem	Possible Cause	Solution
Water not flowing.	Low battery; pump clogged; water level too low; incorrect mode.	Charge the pump; clean the pump and filters; refill water to MAX line; check operating mode.
Fountain is noisy.	Low water level; pump not properly seated; pump needs cleaning.	Refill water; ensure pump is securely placed; clean the pump thoroughly.

Problem	Possible Cause	Solution
Water appears dirty or has an odor.	Filter needs replacement; fountain needs cleaning.	Replace carbon and sponge filters; disassemble and clean all components.
Sensor mode not activating.	Sensor obstructed; pet not within range; low battery.	Ensure sensor is clear; check pet's proximity (within 1.5m); charge battery.

SPECIFICATIONS

- **Brand:** TOONIOOS
- **Model:** B0DJ7B3BZR
- **Material:** 304 Stainless Steel
- **Capacity:** 3.2 Liters
- **Power Source:** Battery Powered (4000mAh rechargeable battery)
- **Dimensions (L x W x H):** 22.5 cm x 22.5 cm x 15.3 cm
- **Item Weight:** 1.07 Kilograms
- **Noise Level:** ≤25 dB
- **Intended Species:** Cat (suitable for small to medium-sized breeds)
- **Usage:** Indoor
- **Country of Origin:** China

WARRANTY AND SUPPORT

The TOONIOOS Wireless Stainless Steel Pet Water Fountain comes with a **2-year warranty**. For any questions, concerns, or warranty claims, please contact TOONIOOS customer service. Our team is dedicated to providing quality support and assistance.

Please refer to the contact information provided with your purchase or visit the official TOONIOOS brand store for support.

Note: Do not attempt to repair the main control module yourself. Unauthorized repairs may void your warranty.