

[Manuals.plus](#) /

> [KVAEY](#) /

> KVAEY 6.5-inch Car Foam Speaker Enhancer Instruction Manual (Model KVAEY-3442CF)

KVAEY KVAEY-3442CF

KVAEY 6.5-inch Car Foam Speaker Enhancer Instruction Manual

Model: KVAEY-3442CF

1. PRODUCT OVERVIEW

The KVAEY 6.5-inch Car Foam Speaker Enhancer is designed to optimize the sound quality of your vehicle's audio system. Made from high-density EDPM foam, this product provides acoustic sealing for speakers, enhancing mid-bass response and preventing sound diffusion. It also helps to absorb door noise and reduce noise transmission, contributing to a clearer and more immersive listening experience. The self-adhesive design ensures easy and secure installation.



Image 1.1: KVAEY 6.5-inch Car Foam Speaker Enhancer (2 PCS) showing the product's circular foam design.

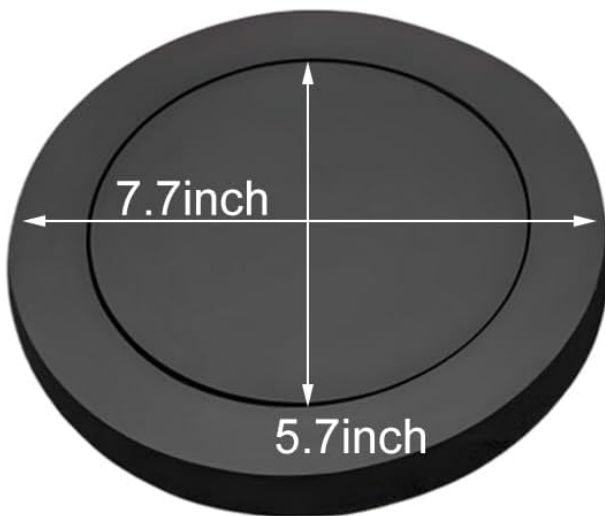
2. SPECIFICATIONS

Attribute	Detail
Material	High-density EDPM Foam
Quantity	2 Pieces
Outer Diameter	7.67 inches (approx. 19.5 cm)
Inner Diameter	5.7 inches (approx. 14.5 cm)
Thickness/Height	1 inch (approx. 2.54 cm)
Weight (per set)	4.6 ounces (approx. 130 grams)
Adhesive Type	Double-sided, high/low temperature resistant

Attribute	Detail
Compatibility	Universal fit for most 6.5-inch car stereo audio speakers
Model Number	KVAEY-3442CF

PRODUCT DIMENSION

(2PCS)



3M double-sided tape

- ✔ Prevents sound diffusion
- ✔ Absorbs door noise
- ✔ Enhances speaker sound



Image 2.1: Detailed product dimensions showing outer diameter of 7.7 inches and inner diameter of 5.7 inches.

3. INSTALLATION GUIDE

Follow these steps for proper installation of the KVAEY Car Foam Speaker Enhancer:

- 1. Prepare the Speaker Area:** Ensure the surface around your car speaker is clean, dry, and free from dust or debris. This will ensure optimal adhesion.
- 2. Unpack and Allow Expansion:** The foam enhancers may arrive in vacuum-sealed packaging. It is recommended to open the packaging and allow the foam rings to expand to their full size for a few days prior to installation.
- 3. Position the Enhancer:** Carefully align the foam speaker enhancer around your 6.5-inch car speaker. The inner diameter of 5.7 inches should fit snugly around the speaker cone or frame.

4. **Apply Adhesive:** The enhancer features a strong double-sided adhesive. Peel off the protective film from the adhesive backing.
5. **Secure the Enhancer:** Press the foam enhancer firmly onto the car door panel or speaker mounting surface, ensuring a complete seal around the speaker. Apply even pressure for several seconds to ensure strong adhesion.
6. **Trim if Necessary:** If your specific speaker or mounting area requires it, the foam speaker enhancer can be slightly trimmed to achieve a perfect fit.



PRODUCTS HAVE PASSED THE GB8410 FLAME RETARDANT TEST

Avoids the spread of sound quality, absorbs door echoes, and enhances the sound effect of the speakers.



Effectively avoids noise transmission and is perforated to ensure better sound quality.

Image 3.1: The KVAEY speaker enhancer showing the double-sided adhesive for secure mounting.



The enhancement system ensures high sound quality to absorb door echoes

Image 3.2: Example of a KVAEY speaker enhancer installed around a car speaker in a door panel.

4. PRODUCT FUNCTIONALITY AND BENEFITS

The KVAEY Car Foam Speaker Enhancer provides several key benefits for your car audio system:

- **Enhanced Sound Quality:** By acoustically sealing the speaker, the enhancer improves mid-bass response and overall sound clarity.
- **Reduced Sound Diffusion:** It prevents sound from escaping into unwanted areas within the car door, directing more sound towards the listener.
- **Noise Absorption:** The foam material absorbs echoes and vibrations from the car door, minimizing distortion and improving the speaker's performance.
- **Noise Transmission Prevention:** It effectively blocks external noise from interfering with the audio output, creating a quieter listening environment.
- **Durability:** Made from EDPM with an open-cell design, the material is resistant to water, icing, and corrosion, ensuring long-term performance.

**Foam speaker rings are perfect for universal
6.5-inch speakers and fit most car
stereo audio speakers**

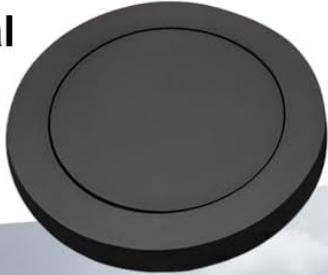
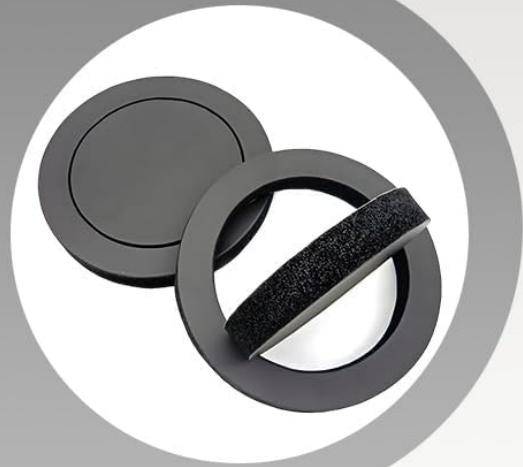


Image 4.1: Diagram illustrating how the speaker enhancer avoids sound spread, absorbs door echoes, and enhances speaker sound.

PRODUCT DETAILS

EDPM MATERIAL SOUNDPROOFING AND WATER-PROOFING

The design of full-open cell foam can effectively drain the water, inhibit the bad situation of winter icing and summer corrosion, and ensure the long-lasting durability of the product.



IMPORTED MATERIALS DOUBLE-SIDED ADHESIVE STRONG ADHESIVE

The product adopts imported materials double-sided adhesive, easy to paste, strong adhesive, adhesive force lasting, high and low temperature resistance, chemical resistance, not easy to fall off

Image 4.2: Close-up of the EDPM material, highlighting its soundproofing and water-proofing properties.

5. MAINTENANCE AND CARE

The KVAEY Car Foam Speaker Enhancer requires minimal maintenance due to its durable EDPM material. To ensure longevity:

- **Regular Inspection:** Periodically check the foam rings for any signs of wear or detachment, especially if exposed to extreme temperatures or moisture.
- **Cleaning:** If necessary, gently wipe the surface of the foam with a damp cloth to remove dust or grime. Avoid using harsh chemicals or abrasive cleaners, as these may damage the material or adhesive.
- **Adhesive Integrity:** The double-sided adhesive is designed for strong, long-lasting hold. If re-installation is required, ensure the surface is clean and dry before re-applying.

6. TROUBLESHOOTING

If you encounter any issues after installing the speaker enhancers, consider the following:

- **Poor Adhesion:**

- Ensure the mounting surface was thoroughly cleaned and dried before application.
- Apply firm, even pressure during installation to activate the adhesive.
- Verify that the foam had sufficient time to expand if it arrived vacuum-sealed.

- **Sound Quality Not Improved:**

- Check for any gaps or incomplete seals around the speaker. Re-adjust or re-apply if necessary.
- Ensure the foam ring is correctly positioned and not obstructing the speaker cone's movement.
- Confirm that the speaker itself is functioning correctly.

- **Incorrect Fit:**

- While designed for 6.5-inch speakers, minor trimming may be required for some specific vehicle models or speaker designs. Use a sharp utility knife for precise cuts.

7. WARRANTY AND SUPPORT

For any questions, concerns, or support regarding your KVAEY Car Foam Speaker Enhancer, please refer to the retailer or your point of purchase. Keep your purchase receipt for warranty claims, if applicable.

Manufacturer: KVAEY

