



Manuals.plus /

› SHEGLAM /

› SHEGLAM Automatic Curling Iron (Model SGH-OTIC-01-25) Instruction Manual

## SHEGLAM SGH-OTIC-01-25

# SHEGLAM Automatic Curling Iron (Model SGH-OTIC-01-25) Instruction Manual

Brand: SHEGLAM | Model: SGH-OTIC-01-25

Introduction	Safety Information	Product Features Troubleshooting	Setup Specifications	Operating Instructions	Maintenance
--------------	--------------------	-------------------------------------	----------------------	------------------------	-------------

### 1. INTRODUCTION

This manual provides detailed instructions for the safe and effective use of your SHEGLAM Automatic Curling Iron, Model SGH-OTIC-01-25. Please read this manual thoroughly before first use and retain it for future reference.

### 2. SAFETY INFORMATION

For external use only. Always ensure the appliance is unplugged when not in use. Keep away from water. Do not use in bathrooms or near water sources. Do not touch the hot barrel directly. Use caution to avoid burns. Keep out of reach of children. Do not use if the cord is damaged. This appliance is designed for hair styling only. Statements regarding dietary supplements have not been evaluated by the FDA and are not intended to diagnose, treat, cure, or prevent any disease or health condition.

### 3. PRODUCT FEATURES

- **Fast Heating and One-Button Automatic Curling:** Achieve beautiful curls in 60 seconds. Simply place your hair, press the button, and let the curling iron automatically curl your hair.
- **Anti-Burn and Anti-Tangle Design for Safety:** Features an anti-burn top and anti-tangle design to protect your hair from damage. No tangling or burns, making it safe for beginners.
- **Travel-Ready Design with Dual Voltage:** Auto-adjusts anywhere you go (100-240V), no converter needed. Comes with a US plug; just bring a plug adapter for use outside the USA.
- **GlossPro Ceramic Coating for Smooth, Shiny Curls:** Uses GlossPro ceramic coating to reduce frizz and heat damage. Locks in moisture and adds shine, leaving curls soft, smooth, and manageable.
- **3 Temperature Settings for Every Hair Type:** Three heat settings (340°F- 410°F) suitable for all hair types. Two-way rotation creates versatile curls, from soft waves to defined curls.

- **Note:** This curling iron is designed for medium to long hair lengths. For very thick or lengthy hair, styling may require additional time and effort.

#### 4. SETUP

1. **Unpack:** Carefully remove the curling iron from its packaging.
2. **Inspect:** Check the appliance and power cord for any signs of damage. Do not use if damaged.
3. **Plug In:** Insert the power plug into a suitable electrical outlet. The device is dual voltage (100-240V) and will auto-adjust.
4. **Power On:** Press and hold the power button for 2 seconds until you hear a beep and the LED light illuminates.
5. **Select Temperature:** Use the temperature control buttons to select your desired heat setting (340°F, 380°F, or 410°F). The LED light will flash while heating up and become steady when ready.



170°C

fine hair texture

190°C

medium hair texture

210°C

coarse hair texture

**3 TEMPERATURE SETTINGS**  
**FOR EVERY HAIR TYPE AND TEXTURE.**



Image: Three temperature settings for different hair textures (fine, medium, coarse) are indicated on the curling iron's display.

## 5. OPERATING INSTRUCTIONS

Follow these steps for optimal curling results:

1. **Preparation:** Ensure your hair is dry and detangled. Section your hair into manageable strands, approximately 1 inch wide.
2. **Tuck Hair:** Hold the curling iron vertically. Take a 1-inch section of hair and place it into the long hair slot. For shorter hair, use the short hair slot.
3. **Curl:** Press and hold the Rotate button. The hair will automatically wrap around the curling barrel. Continue holding until all hair is wrapped.
4. **Hold:** The curling iron will beep after a set time (typically two beeps) to indicate the curl is ready. For longer-lasting curls, hold for an extra 2-3 seconds after the beep.
5. **Release:** After the final beep, release the Rotate button and gently pull the curling iron downwards to release the curl.
6. **Repeat:** Repeat the process for all sections of your hair. Allow curls to cool completely before styling or brushing for best hold.

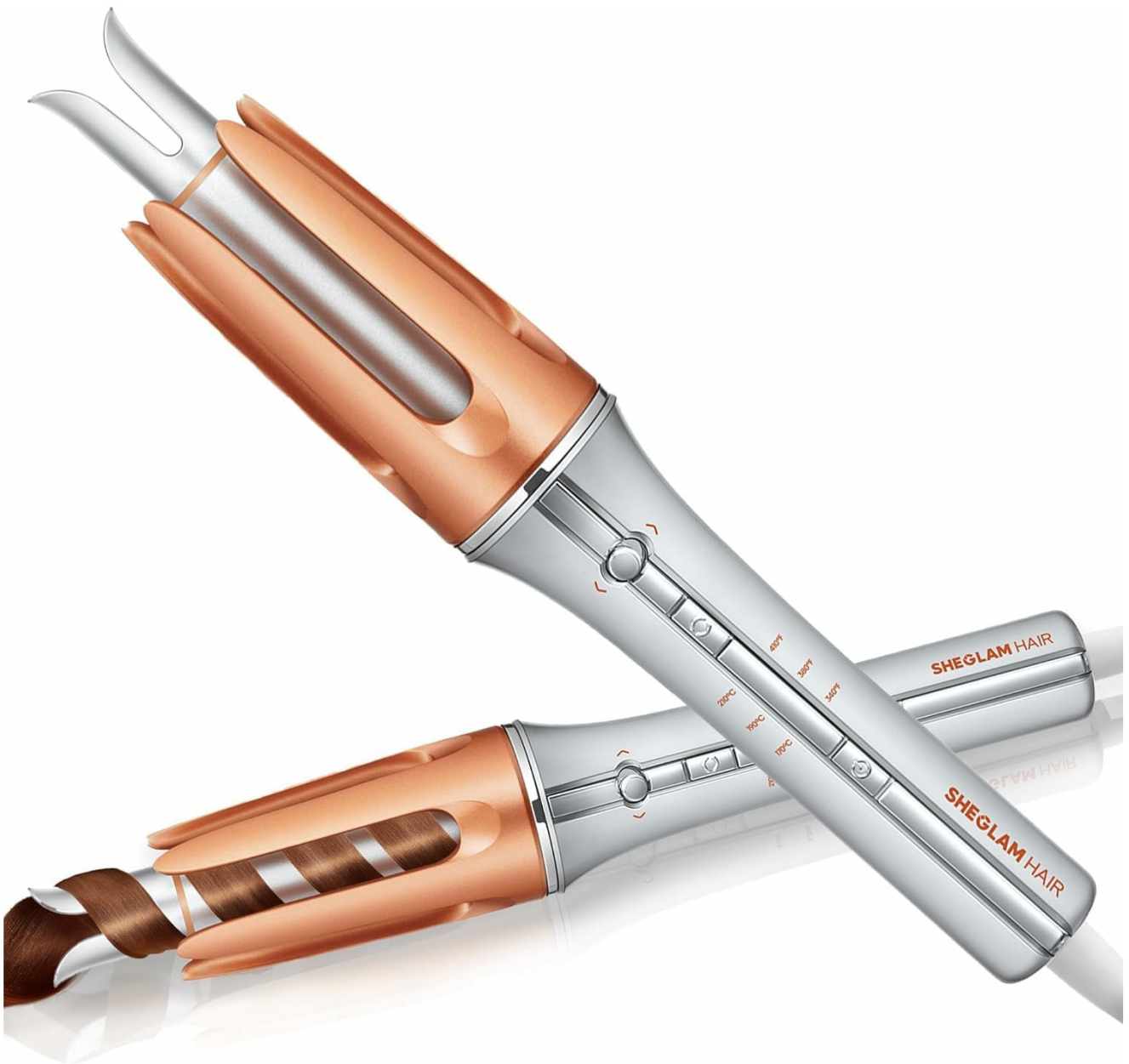


Image: Step-by-step guide for using the SHEGLAM Automatic Curling Iron, from preparation to releasing the curl.

### Achieving Different Curl Styles

- **Tight Curls:** Use the 1-inch barrel (this model) and hold each section for a longer duration.
- **Loose Waves:** For looser waves, use a larger barrel size (if available) or hold each section for a shorter

duration. Gently brush out curls after they cool for a softer wave.

- **Two-Way Rotation:** The device features two-way rotation. Use the left/right buttons to choose the direction of the curl, allowing for symmetrical styling on both sides of your head.

## 2 SIZE CHOICES

1"/25MM

Tight Curl

1.25"/32MM

Loose Wave



Image: Demonstrates the difference between tight curls (1-inch barrel) and loose waves (1.25-inch barrel).

## 6. MAINTENANCE & CARE

- **Cleaning:** Ensure the curling iron is unplugged and completely cool before cleaning. Wipe the barrel and exterior with a soft, damp cloth. Do not use abrasive cleaners or immerse the device in water.
- **Storage:** Store the curling iron in a cool, dry place, away from direct sunlight and moisture. Ensure the cord is not wrapped tightly around the appliance to prevent damage.
- **Anti-Tangle Mechanism:** The smart chip detects tangles to prevent hair snags. If hair gets caught, release the button and gently remove the hair.

# NO MORE STUCK HAIR

Detects tangles to prevent hair snags

SMART CHIP



Image: The smart chip technology prevents hair from getting stuck or tangled during curling.

## 7. TROUBLESHOOTING

Problem	Possible Cause	Solution
Device does not turn on.	Not plugged in correctly or power button not held long enough.	Ensure the device is securely plugged into a working outlet. Press and hold the power button for 2 seconds until you hear a beep.
Hair gets tangled in the barrel.	Section of hair is too large or not placed correctly.	Release the rotate button immediately. Gently pull the hair out. Ensure hair sections are no more than 1 inch wide and placed properly in the hair slot.
Curls are not holding.	Insufficient heat or holding time.	Increase the temperature setting or hold the hair in the barrel for an extra 2-3 seconds after the beep. Ensure hair is completely dry before curling.
Slight odor on first use.	Normal due to heating process.	The smell will dissipate after a few uses. This is normal and not a defect.

## 8. SPECIFICATIONS

- **Product Dimensions:** 10.63 x 1.97 x 1.97 inches
- **Weight:** 1.41 Pounds
- **Item Model Number:** SGH-OTIC-01-25
- **Manufacturer:** SHEGLAM
- **Material:** Acrylonitrile Butadiene Styrene (ABS)
- **Color:** Rose Gold
- **Voltage:** 100-240V (Dual Voltage)
- **Temperature Settings:** 3 (340°F, 380°F, 410°F)
- **Barrel Size:** 1 inch (This model)
- **Features:** Fast Heating, One-Button Automatic Curling, 2-Way Rotation, Automatic Shut-Off, Anti-Scald, Anti-Tangle, GlossPro Ceramic Coating.