



Manuals.plus /

› SHEGLAM /

› SHEGLAM Automatic Curling Iron User Manual

SHEGLAM sb2405315360354252

SHEGLAM Automatic Curling Iron User Manual

Model: sb2405315360354252

INTRODUCTION

Thank you for choosing the SHEGLAM Automatic Curling Iron. This innovative hair styling tool is designed to help you achieve beautiful, long-lasting curls with ease and safety. Featuring fast heating, automatic rotation, and multiple temperature settings, it's perfect for various hair types and styling needs. Please read this manual thoroughly before use to ensure proper operation and maintenance.

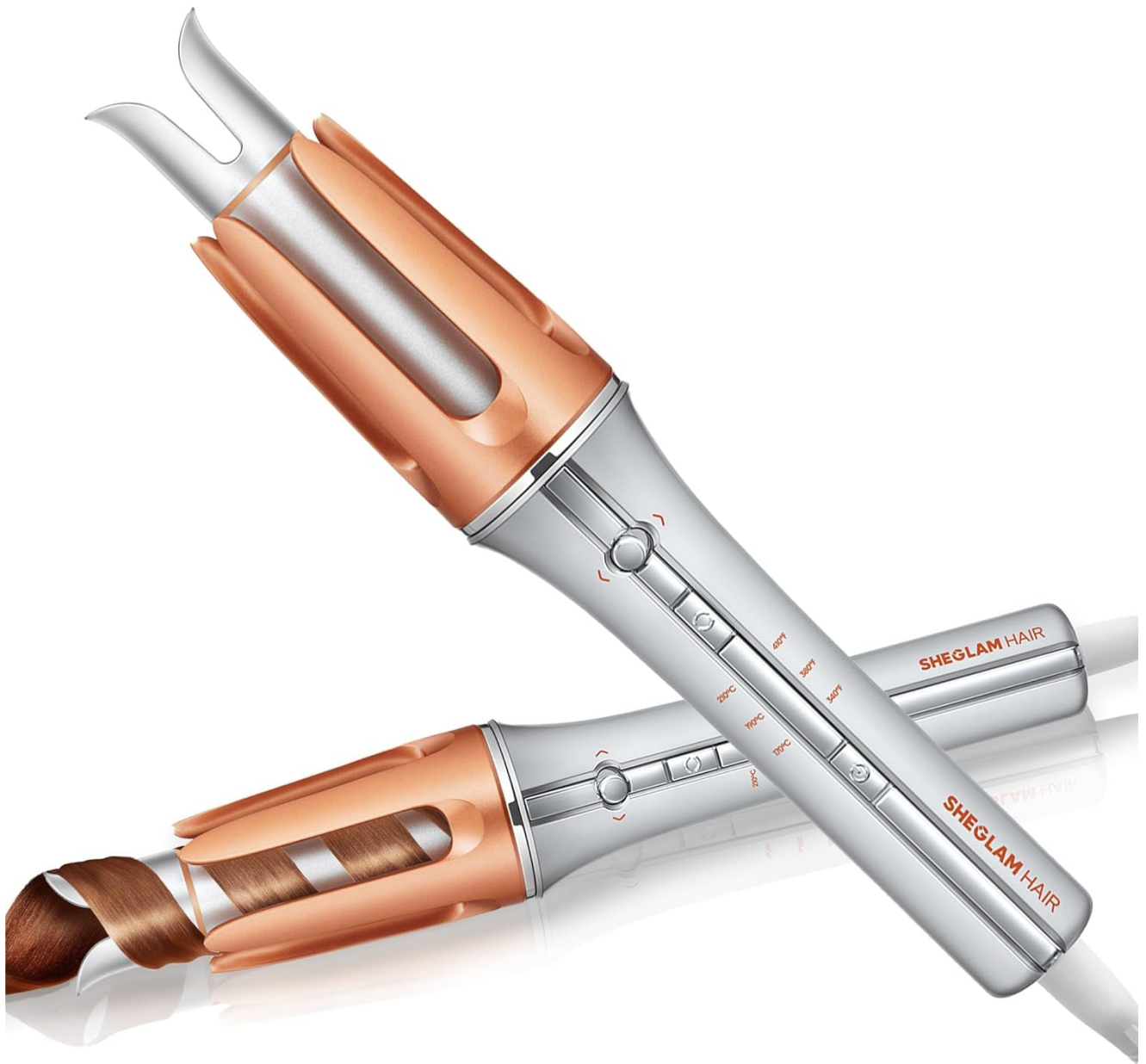


Image: The SHEGLAM Automatic Curling Iron, showcasing its sleek design and curling mechanism.

IMPORTANT SAFETY INFORMATION

To reduce the risk of burns, electrocution, fire, or injury to persons:

- **Burn Hazard:** Surfaces get extremely hot during use. Avoid direct contact with skin, especially the scalp, ears, and neck.
- **Electric Shock Risk:** Keep away from water. Do not use near bathtubs, sinks, showers, or any other water sources. Never reach for an appliance that has fallen into water. Unplug immediately.
- **Fire Risk:** Unplug the appliance when not in use. Do not leave unattended when plugged in. Ensure the appliance is placed on a heat-resistant surface when hot.
- **Children:** Keep out of reach of children. This appliance is not intended for use by children or persons with reduced physical, sensory, or mental capabilities unless supervised.
- Do not wrap the power cord around the appliance.
- Do not use if the cord or plug is damaged.

- Do not use outdoors or operate where aerosol (spray) products are being used or where oxygen is being administered.

WHAT'S INCLUDED

Your SHEGLAM Automatic Curling Iron package should contain the following items:

- SHEGLAM Automatic Curling Iron (1 1/4-inch barrel)
- User Manual



Image: The SHEGLAM Automatic Curling Iron in its retail packaging.

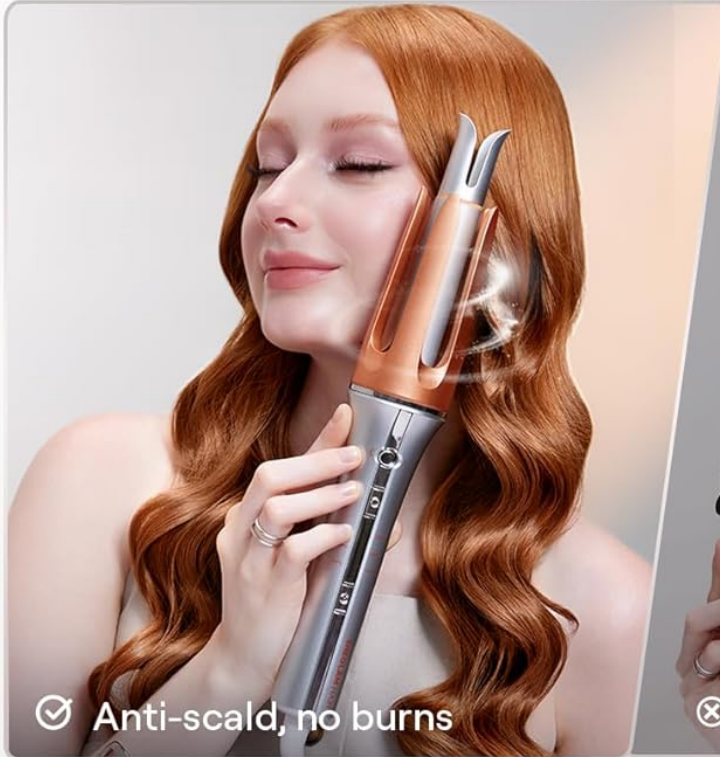
PRODUCT FEATURES

- **Fast Heating & One-Button Automatic Curling:** Achieve beautiful curls in 60 seconds. Simply place your

hair, press the button, and let the curler do the work.

- **Anti-Burn & Anti-Tangle Design:** Features an anti-burn top and anti-tangle design to protect your hair from damage and prevent tangles, making it safe and easy for beginners.
- **Travel-Ready Dual Voltage (100-240V):** Auto-adjusts anywhere you go, no converter needed. Comes with a US plug; just bring a plug adapter for use outside the USA.
- **GlossPro Ceramic Coating:** Reduces frizz and heat damage, locks in moisture, and adds shine for soft, smooth, and manageable curls.
- **3 Temperature Settings:** Three heat settings (340°F - 410°F / 170°C - 210°C) suitable for all hair types.
- **Two-Way Rotation:** Creates versatile curls, from soft waves to defined curls.

OURS:



OTHERS:

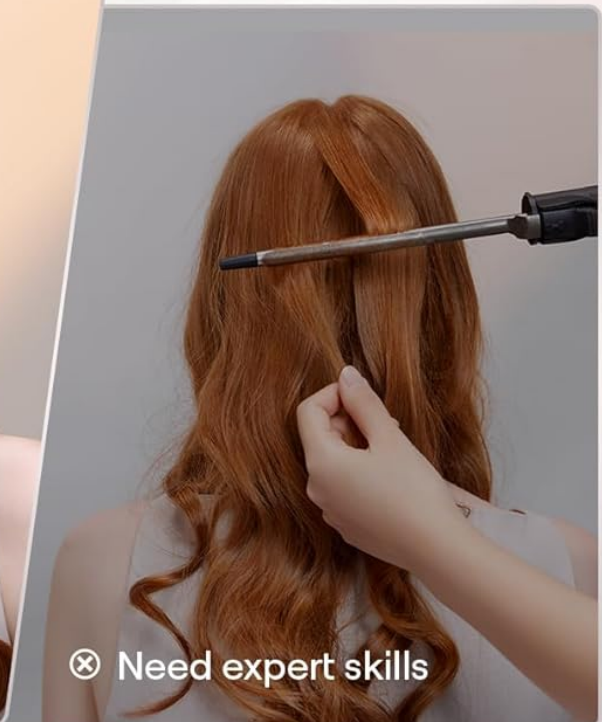
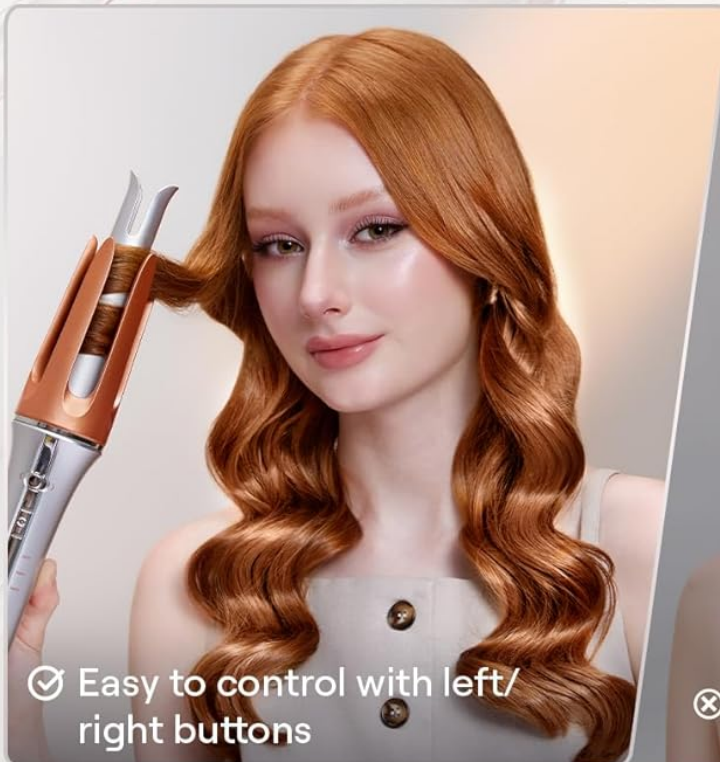


Image: Comparison highlighting the anti-scald design and easy control buttons of the SHEGLAM curler.

NO MORE STUCK HAIR

Detects tangles to prevent hair snags

SMART CHIP



Image: Illustration of the smart chip detecting tangles to prevent hair snags.



170°C

fine hair texture

190°C

medium hair texture

210°C

coarse hair texture

3 TEMPERATURE SETTINGS
FOR EVERY HAIR TYPE AND TEXTURE.



Image: Visual representation of the three temperature settings (170°C/340°F, 190°C/380°F, 210°C/410°F) for different hair textures.

IDENTIFYING YOUR HAIR TEXTURE

Run one hair strand between your fingers.



Fine Hair:
If you can barely feel or see the strand.



Medium Hair:
If you can easily feel the strand, and it glides smoothly.



Coarse Hair:
If the strand feels thick and textured.



Image: Guide to identifying fine, medium, and coarse hair textures to select the appropriate temperature setting.

SETUP

1. **Unpack:** Carefully remove the curling iron from its packaging. Retain the packaging for future storage or

transport.

2. **Inspect:** Check the appliance and power cord for any signs of damage. Do not use if damaged.
3. **Plug In:** Insert the power plug into a suitable electrical outlet (100-240V).
4. **Power On:** Press and hold the power button () for 1 second until the indicator lights illuminate.
5. **Select Temperature:** Use the temperature control buttons to select your desired heat setting (170°C/340°F for fine hair, 190°C/380°F for medium hair, 210°C/410°F for coarse hair). The LED light will flash while heating up and become solid when ready.
6. **Choose Curl Direction:** Use the direction toggle switch to select the desired curl direction (left or right rotation).



Image: Close-up of the curling iron showing the power button, temperature settings, and curl direction toggle.

OPERATING INSTRUCTIONS

For best results, start with clean, dry, and tangle-free hair. This curling iron is designed for medium to long hair lengths. For very thick or lengthy hair, styling may require additional time and effort.

1. **Preparation:** Ensure the curling iron is powered on and has reached the selected temperature.
2. **Section Hair:** Take a 1-inch section of hair. For optimal results, ensure the section is not too thick.

3. **Tuck Hair:** Hold the curler vertically. Insert the hair section into the designated long hair slot. Ensure the hair is neatly placed within the slot.



Image: Close-up showing how to properly tuck a hair section into the long hair slot.

4. **Twirl (Curl):** Press and hold the rotate button. The hair will automatically be drawn into the curling barrel and wrapped around it. Continue holding the button until the hair is fully wrapped. The device will beep twice when the curl is complete.
5. **Release:** Once you hear two beeps, slowly pull the curling iron downwards to release the perfectly formed curl. For longer-lasting curls, hold the curl in your hand for an extra 2-3 seconds after releasing.
6. **Repeat:** Continue these steps section by section until all desired hair is curled.

EASY TO USE

1. PREP

190°C 380°F
170°C 340°F

beeeeeep~

Plug in, hold 2s to turn on, choose temp/direction. Ready at beep.

2. TUCK

Long
hairslot



Short
hairslot



Hold vertically, place hair section.

3. TAP



Press the Rotate button

4. TWIRL



Hold the button until hair is wrapped.

5. RELEASE



After two beeps, pull hair out. Hold for an extra 2-3s after the beep for longer-lasting curls.

6. REPEAT



Repeat for curls or waves.

Image: Visual guide demonstrating the preparation, tucking, tapping, twirling, and releasing steps for curling.

Official Product Videos:

SHEGLAM Automatic Curling Iron for Hair Styling

Your browser does not support the video tag.

Video: A comprehensive demonstration of how to use the SHEGLAM Automatic Curling Iron to style hair, including preparation and curling techniques.

she glam with the iron curler

Your browser does not support the video tag.

Video: A user demonstrating the ease of use and results of the SHEGLAM Automatic Curling Iron.

she glam with the curling iron

Your browser does not support the video tag.

Video: Another demonstration of the curling iron in action, highlighting its automatic features.

MAINTENANCE

Proper care and maintenance will ensure the longevity and optimal performance of your SHEGLAM Automatic Curling Iron.

- **Cleaning:** Always unplug the appliance and allow it to cool completely before cleaning. Wipe the exterior surfaces with a soft, damp cloth. Do not use abrasive cleaners or harsh chemicals.
- **Storage:** Store the curling iron in a cool, dry place. Do not wrap the cord around the appliance, as this can cause damage over time.
- **Avoid Water:** Never immerse the appliance in water or any other liquid.

TROUBLESHOOTING

If you encounter any issues with your SHEGLAM Automatic Curling Iron, please refer to the common problems and solutions below:

| Problem | Possible Cause | Solution |
|---------------------------------|--|---|
| Curling iron does not power on. | Not properly plugged in; Power button not held long enough. | Ensure the plug is fully inserted into the outlet. Press and hold the power button for 2 seconds until you hear a beep. |
| Hair gets stuck or tangled. | Hair section is too large; Hair is not tangle-free. | Use smaller, 1-inch sections of hair. Ensure hair is completely detangled before curling. The smart chip detects tangles to prevent snags. |
| Curls do not last. | Incorrect temperature setting; Not holding curl long enough. | Ensure you are using the appropriate temperature for your hair type (refer to "3 Temperature Settings" in Product Features). After releasing the curl, hold it in your hand for an extra 2-3 seconds to enhance durability. |
| Slight odor during first use. | Normal during initial heating process. | This is normal and will disappear after a few uses. |



Image: Frequently Asked Questions (FAQs) related to the curling iron's operation and common issues.

SPECIFICATIONS

| Attribute | Detail |
|-------------------------|---|
| Brand | SHEGLAM |
| Model Number | sb2405315360354252 |
| Product Dimensions | 12.4 x 2.1 x 2.1 inches |
| Item Weight | 1.32 Pounds |
| Material | Ceramic |
| Hair Type Compatibility | All, Coarse, Fine, Normal, Thick, Damaged, Thin, Straight |
| Temperature Settings | 340°F (170°C), 380°F (190°C), 410°F (210°C) |
| Voltage | 100-240V (Dual Voltage) |
| Wattage | 39 watts |

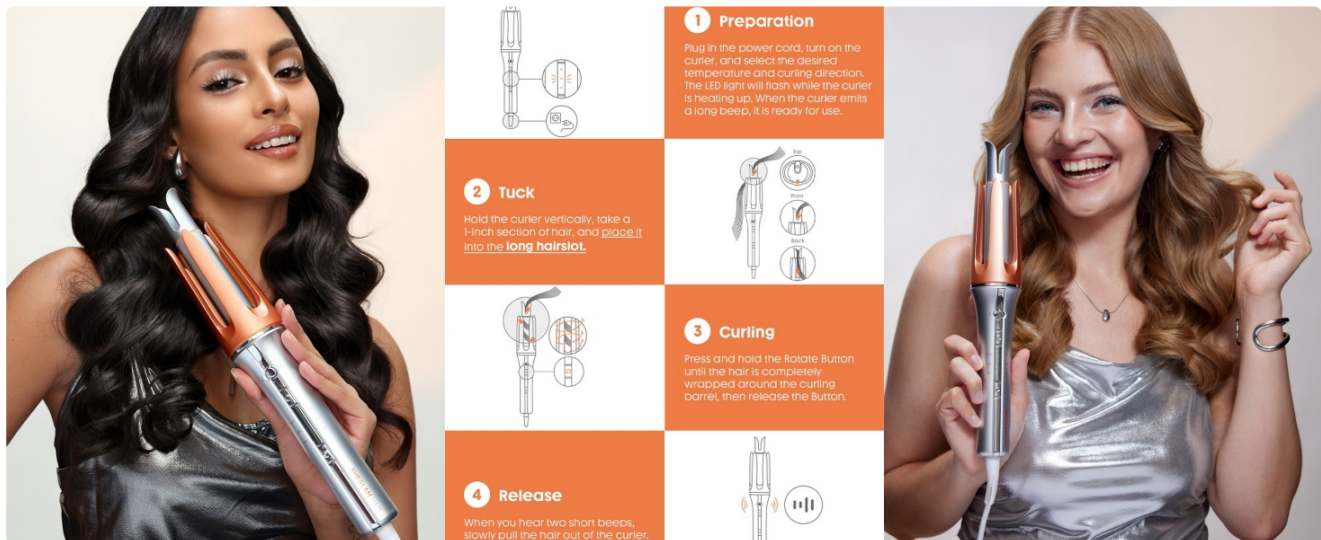


Image: A comparison table showing various SHEGLAM Hair products and their specifications, including the It-Curl Instant Curler.

WARRANTY AND SUPPORT

For warranty information or product support, please visit the official SHEGLAM store or contact their customer service directly. You can find more information and contact details on the SHEGLAM Amazon Store.