

Nitecore EDC29

Nitecore EDC29 LUMINBLADE Flashlight User Manual

Model: EDC29 | Brand: Nitecore

1. INTRODUCTION

The Nitecore EDC29 LUMINBLADE is an ultra-thin, high-performance Everyday Carry (EDC) flashlight designed for both daily use and tactical applications. It features a powerful 6,500-lumen output and a beam distance of up to 400 meters, all within a compact and ergonomic design. This manual provides detailed instructions for the proper use, maintenance, and troubleshooting of your EDC29 flashlight.



Image: The Nitecore EDC29 LUMINBLADE flashlight shown alongside its retractable keychain accessory.

2. KEY FEATURES

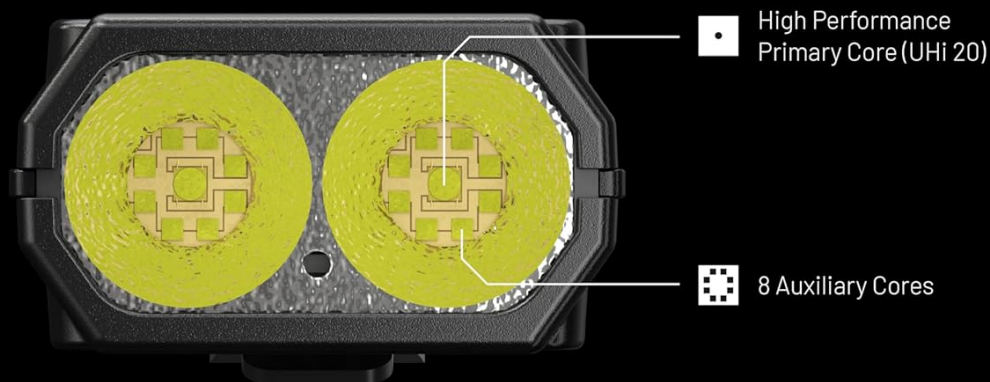
- **Ultra-Slim Design:** Compact and lightweight, ideal for everyday carry.
- **High Performance:** Delivers an impressive 6,500 lumens of brightness with a 400-meter beam distance.

- **Dual LED System:** Equipped with 2 x UHi 20 MAX LEDs and 18 cores for superior illumination.
- **Versatile Modes:** Includes LUMIN SHIELD, Second-Gen STROBE READY (with random frequencies), and 400-Meter Tactical Search Mode.
- **Intuitive Control:** Features dual two-stage tactical tail switches for precise operation and a customizable tactical button.
- **Rapid Lock:** A simple slide mechanism for quick and easy locking/unlocking.
- **Durable Construction:** Armor-inspired anti-slip body with stainless steel shells and a carbon fiber composite frame, reinforced by connector bolts.
- **Extended Runtime:** Powered by a built-in 2,500mAh Li-ion battery, offering up to 61 hours of runtime.
- **Multifunctional OLED Display:** Provides real-time information on brightness level, battery voltage, remaining power, and more.
- **Advanced Functions:** Two lock modes (Semi and Full), brightness level preset function, and sensor protection function to prevent overheating.
- **Waterproof and Impact Resistant:** Rated IP54 and capable of withstanding drops from 1 meter.

NITECORE®

Brighter, Bolder, Better Dual NiteLab UHi 20 MAX LEDs

Featuring a slim design with the powerhouse performance of the Tiny Monster Series, the EDC29 redefines what a compact flashlight can achieve. Built with a dual LED system with 18 cores, it delivers unrivaled brightness and extraordinary long-range capabilities in an ultra-thin design, outperforming bulkier mid-sized flashlights and setting a new standard in terms of performance.



• Dual LEDs With 18 Cores

• 6,500 Lumens

• Spotlight + Floodlight



6500 LUMENS

NITECORE's patented tech, offering broad light for enhanced defense

STROBE READY!
ULTIMATE ONE-HANDED OPERATION

6500 LUMENS
with Random Frequencies

For stronger dizzying effects

400 METERS

Tactical SEARCH Mode (Spotlight)

Offers long-range visibility

Image: Close-up view of the Nitecore EDC29's dual NiteLab UHi 20 MAX LEDs, highlighting its powerful light source.

NITECORE®

Armor-Inspired Anti-Slip Body

The EDC29 features stainless steel shells at its front and rear, which are integrated with a carbon fiber composite frame. Its unique armor-style texture is designed to offer a secure grip, whether barehanded or with gloves.

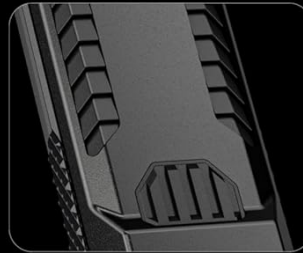
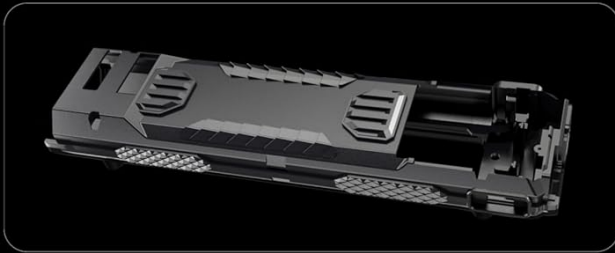


Image: The Nitecore EDC29's armor-inspired anti-slip body, designed for a secure grip even with gloves.

3. SETUP

3.1 Initial Charging

The EDC29 comes with a built-in 2,500mAh Li-ion battery. Before first use, it is recommended to fully charge the device. Connect the flashlight to a USB power source using a USB-C cable (not included). The OLED display will indicate charging status and battery level. A full charge typically takes a few hours.

3.2 First Use

Upon receiving your EDC29, ensure it is unlocked. The Rapid Lock mechanism allows for quick locking and unlocking. Slide the lock switch to the unlocked position to enable full functionality.

4. OPERATING INSTRUCTIONS

4.1 Power On/Off and Brightness Adjustment

The EDC29 features dual two-stage tactical tail switches:

- **Power Button:**
 - **Half Press:** Adjusts brightness levels. Cycle through available brightness settings with repeated half presses.
 - **Full Press:** Turns the flashlight On or Off.



The advertisement features a black background with a yellow Nitecore logo in the top right corner. The main title 'M-TURBO' is in large white letters, followed by 'Dual-Stage Tactical Buttons' in a slightly smaller white font. On the left, a detailed view of the flashlight's tail switch is shown, with two buttons. Lines point from the text descriptions to these buttons. The top button is labeled 'Dual-Stage Power Button' and offers intuitive operations for quick response, including half press for brightness adjustment and full press for on/off. The bottom button is labeled 'Dual-Stage Tactical Customizable Button'. Below these, there are two logos: 'LUMIN SHIELD' and 'STROBE READY!'. At the bottom left, the text 'Rapid Lock™ Available' is written in large blue letters, followed by 'Lock / Unlock With One Slide' in white. On the bottom right, a partial view of the flashlight's body is shown.

NITECORE®

M-TURBO

Dual-Stage Tactical Buttons

Dual-Stage Power Button
Offers intuitive operations for quick response

- **Half Press: Brightness Levels Adjustment**
- **Full Press: On / Off**

Dual-Stage Tactical Customizable Button

LUMIN SHIELD **STROBE READY!**
ULTIMATE ONE-HANDED OPERATION

Rapid Lock™ Available

Lock / Unlock With One Slide

Image: Detailed view of the Nitecore EDC29's dual-stage tactical buttons, illustrating the power and customizable buttons.

4.2 Mode Switching (LUMIN SHIELD, STROBE, Tactical Search)

- **Customizable Tactical Button:** This button allows quick access to specific modes.
- **LUMIN SHIELD:** Activates a 6500-lumen wide-area light for immediate protection and illumination without glare.
- **STROBE READY:** Offers randomly changing frequencies (16 Hz to 20 Hz) for stronger dizzying effects.
- **Tactical Search Mode:** Activates the two primary LED cores for a stunning 3000-lumen beam with 40,230cd

throw.

Refer to the OLED display for current mode and brightness information.

4.3 Rapid Lock Mechanism

The EDC29 features a Rapid Lock slide switch. Slide the switch to fully lock, half-lock, or unlock the flashlight for immediate response or secure storage.

4.4 Lockout Modes

The EDC29 offers two lockout modes:

- **Semi Lockout Mode:** The Power Button is locked, but the Customizable Button remains active for direct access to LUMIN SHIELD / STROBE / SEARCH.
- **Full Lockout Mode:** Both buttons are unavailable, preventing accidental activation. Ideal for long-term storage or transportation.

4.5 Brightness Level Preset Function

Before activating the light, you can half-press the Power Button to preset the desired brightness level. This is useful for tactical operations requiring precise illumination or for everyday use where softer light is preferred.

4.6 Sensor Protection Function

The flashlight is equipped with a sensor protection function. If the flashlight is off and an obstruction is detected near the light outlet, causing it to accidentally access HIGH mode, the flashlight brightness will automatically decrease to avoid overheating and potential damage.



Image: Diagram illustrating the Nitecore EDC29's sensor protection function, which automatically reduces brightness to prevent overheating when an obstruction is detected.

5. MAINTENANCE

- **Cleaning:** Use a soft, damp cloth to clean the flashlight body. Avoid harsh chemicals or abrasive materials.
- **Battery Care:** To maintain battery health, charge the flashlight regularly, even if not in frequent use. Avoid fully discharging the battery for extended periods.
- **Storage:** Store the flashlight in a cool, dry place. For long-term storage, activate the Full Lockout Mode to

prevent accidental activation and battery drain.

6. TROUBLESHOOTING

- **Flashlight not turning on:**

- Check if the flashlight is in a lockout mode. Slide the Rapid Lock switch to unlock.
- Ensure the battery is charged. Connect to a USB-C power source.

- **Light output is dim or flickering:**

- The battery might be low. Recharge the flashlight.
- The sensor protection function might be active due to an obstruction or high temperature. Remove any obstruction and allow the flashlight to cool.

- **Buttons are unresponsive:**

- Verify the lockout mode. If in Full Lockout, unlock the device.
- Ensure the buttons are clean and free of debris.

7. SPECIFICATIONS

NITECORE®

Specifications:

Width:
34.6mm
(1.36")

Length:
133.5mm
(5.26")

Height:
19.2mm
(0.76")

Image: Visual representation of the Nitecore EDC29's dimensions and key specifications.

Feature	Detail
Model	EDC29
Brightness	6500 Lumens (Max)
Beam Distance	400 meters (Max)
Light Source Type	LED (2 x UHi 20 MAX LEDs)
Power Source	Built-in 2,500mAh Li-ion Battery
Max Runtime	Up to 61 hours
Material	Stainless Steel, Carbon Fiber Composite Frame
Dimensions (L x W x H)	5.2" x 1.4" x 0.76" (133.5mm x 34.6mm x 19.2mm)
Weight	3.53 ounces (100 Grams)

Image: The Nitecore EDC29 showing its large lanyard hole and detachable pocket clip, demonstrating accessory compatibility.

9. WARRANTY AND SUPPORT

Nitecore products are manufactured with high standards of quality and craftsmanship. For detailed warranty information, please refer to the official Nitecore website or contact their customer support directly.

For further assistance, product registration, or to explore other Nitecore products, please visit the official Nitecore store: [Nitecore Official Store](#)