



Manuals.plus /

› Huacae /

› Huacae EWeLink 1CH 7-32V Smart Switch Instruction Manual

## Huacae EWB1CH-B1

# Huacae EWeLink 1CH 7-32V Smart Switch Instruction Manual

Model: EWB1CH-B1

## 1. INTRODUCTION

---

The Huacae EWeLink 1CH 7-32V Smart Switch is a versatile, single-channel self-locking relay module designed for remote control of household appliances. It offers mobile phone remote control via the eWeLink or Smart Life APP, timing and delay functions, and compatibility with voice assistants like Amazon Alexa and Google Assistant. This device operates as a dry contact (passive output) switch, meaning it does not supply voltage at its output terminals, acting as a wireless button or switch.

This manual provides detailed instructions for the safe installation, configuration, and operation of your smart switch.

## 2. SAFETY INFORMATION

---

- **Electrical Safety:** Installation should only be performed by qualified personnel. Ensure the power supply is disconnected before any wiring work to prevent electric shock.
- **Voltage Compatibility:** Verify that the input voltage (AC/DC 7-32V or USB 5V) matches your power source.
- **Current Limits:** Do not exceed the maximum current rating of 10A (2200W) for connected appliances.
- **Environment:** Do not expose the device to moisture, extreme temperatures, or corrosive environments.
- **Dry Contact:** Remember that the output is a dry contact (passive output) and does not provide voltage. It acts as a switch to complete or break a circuit.

## 3. PRODUCT OVERVIEW

---

The Huacae EWeLink Smart Switch (Model: EWB1CH-B1) features a compact design with clearly labeled terminals for easy installation. It includes a Wi-Fi module and a manual button for local control.

# AC/DC 7-32V 10A

1CH

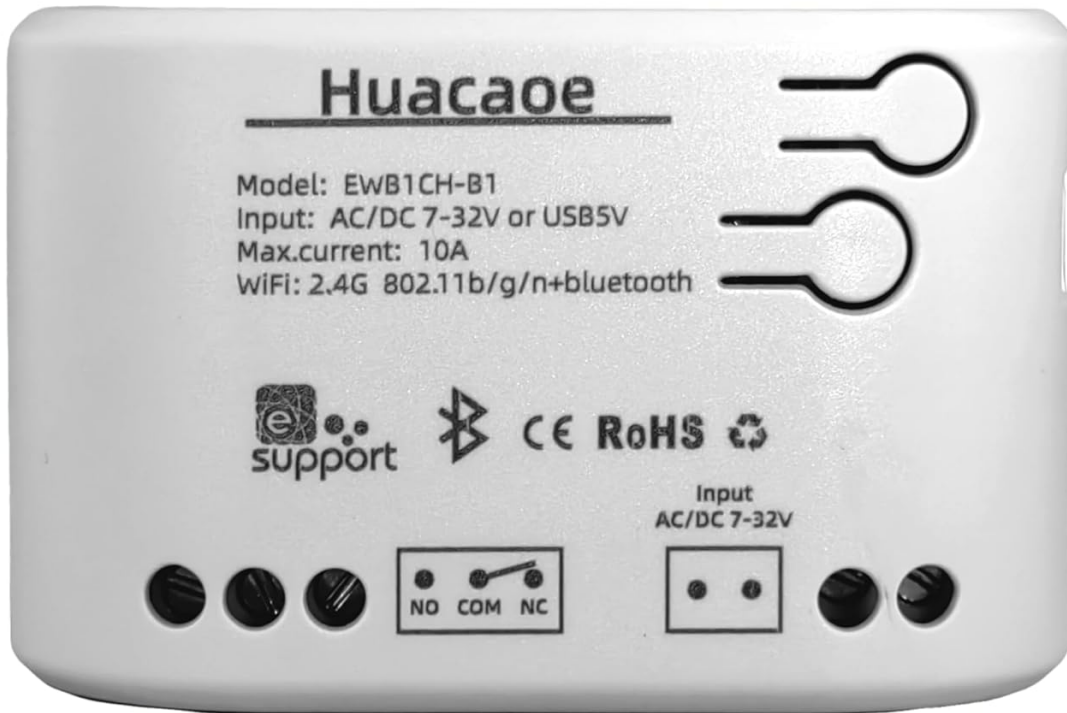
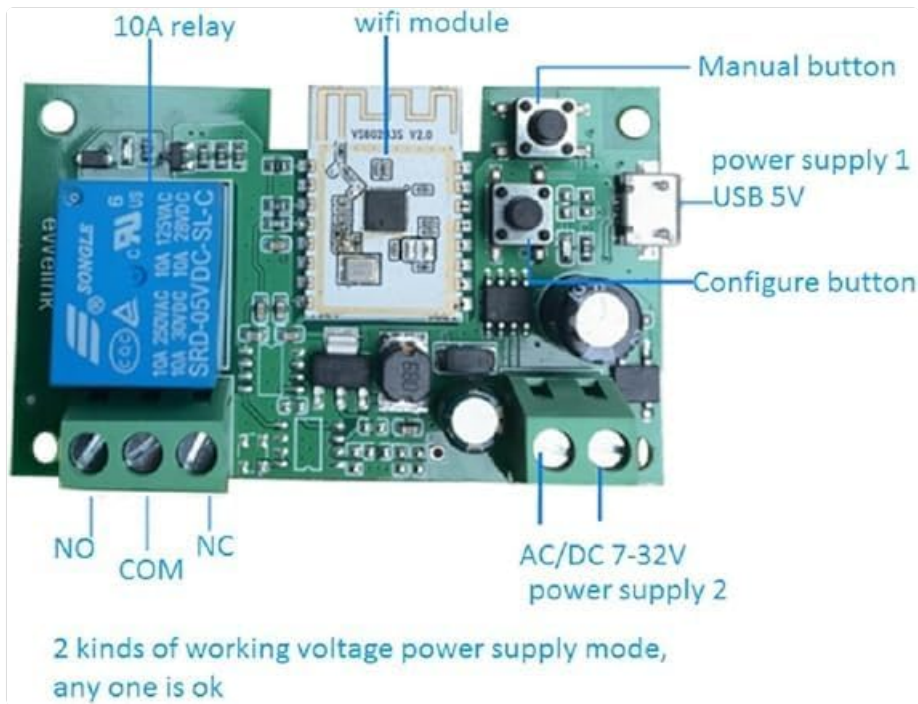


Figure 3.1: Front view of the Huacaoe EWeLink Smart Switch, showing input terminals for AC/DC 7-32V or USB 5V, output terminals (NO, COM, NC), and model information.



**Figure 3.2:** Internal circuit board of the smart switch, highlighting the 10A relay, Wi-Fi module, manual button, and configure button. It also shows the USB 5V and AC/DC 7-32V power supply options.

#### 4. SPECIFICATIONS

Parameter	Value
Model	EWB1CH-B1
Input Voltage	AC/DC 7-32V or USB 5V
Max Current	10A (2200W)
WiFi Standard	2.4G 802.11 b/g/n + Bluetooth
Operating Temperature	-20°C ~ 80°C
Material	Acrylonitrile Butadiene Styrene (ABS)
Dimensions (L x W x H)	2.87 x 1.81 x 1.14 inches (73 x 46 x 29 mm)
Control Method	App, Remote, Touch, Voice
Connectivity Protocol	Wi-Fi
Contact Type	Normally Open (NO)
Switch Type	Relay Switch
Circuit Type	1-way
Mounting Type	DIN Rail Mount

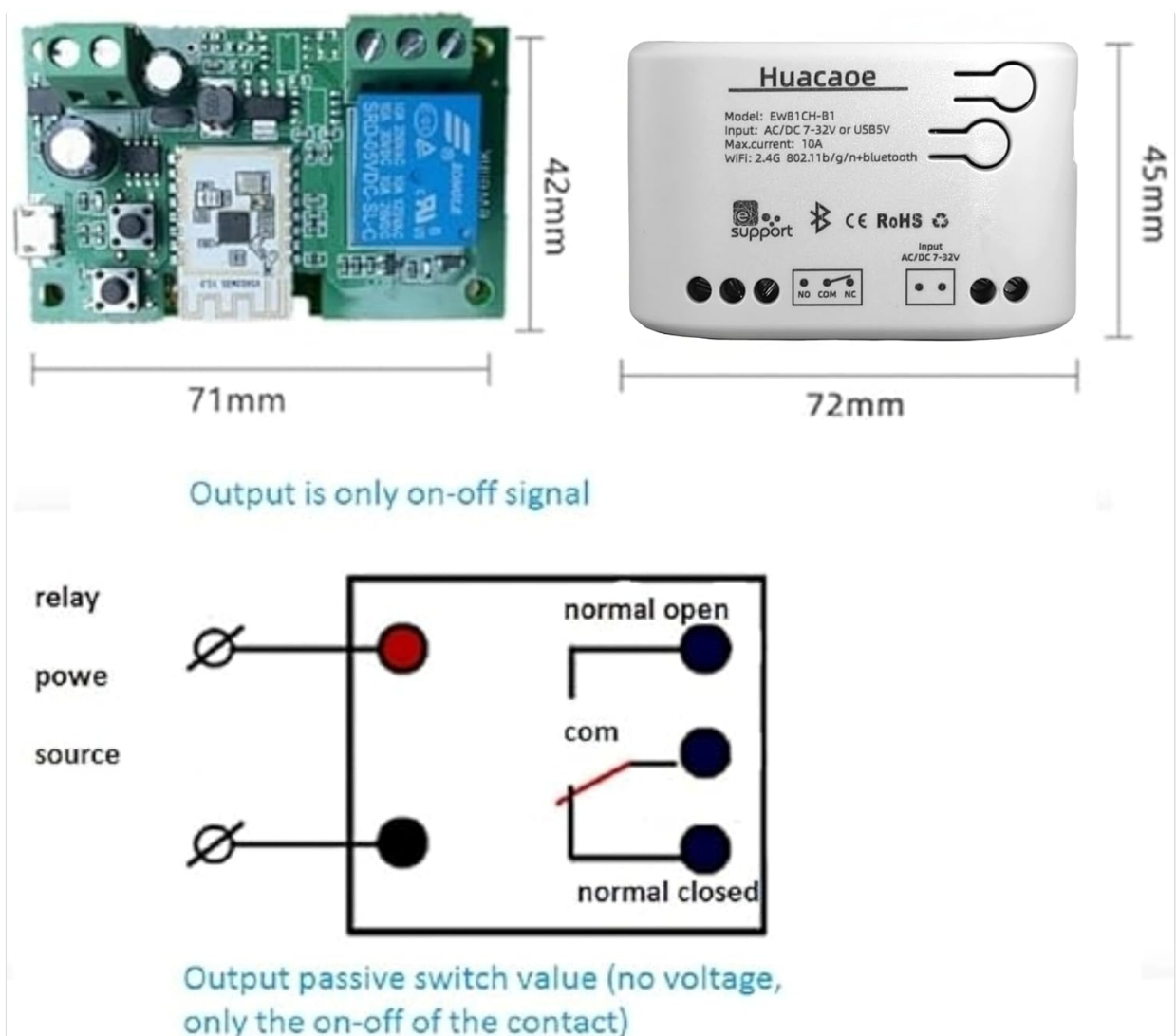


Figure 4.1: Physical dimensions of the smart switch and a diagram illustrating the dry contact output signal (NO, COM, NC).

## 5. SETUP

### 5.1 Wiring and Installation

The smart switch operates as a dry contact relay, meaning its output terminals (NO, COM, NC) do not provide power. They simply open or close a circuit. The device itself requires a separate power supply.

- **Power Input:** Connect your power source to the input terminals labeled "Input AC/DC 7-32V" or use the USB 5V port.
- **Appliance Connection:** Connect the appliance or circuit you wish to control to the output terminals:
  - **COM (Common):** This is the common terminal for the relay.
  - **NO (Normally Open):** The circuit between COM and NO is open when the relay is off and closed when the relay is on.
  - **NC (Normally Closed):** The circuit between COM and NC is closed when the relay is off and open when the relay is on.
- Ensure all connections are secure and insulated.

default on/off mode, add wifi remote to light fan etc. The power supply terminal and the control terminal are connected with different voltages (2 power supplies respectively)

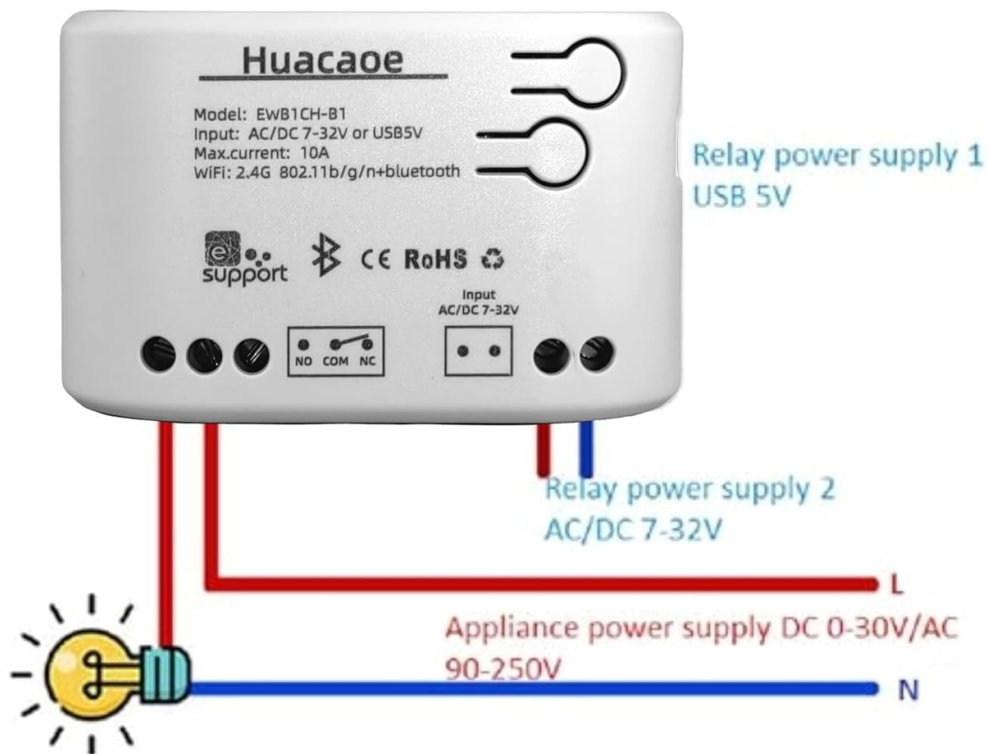


Figure 5.1: Wiring diagram showing connections for relay power supply (USB 5V or AC/DC 7-32V) and the appliance power supply (DC 0-30V / AC 90-250V) to the NO/COM/NC terminals.

## 5.2 App Installation and Device Pairing

The smart switch can be controlled via the eWeLink or Smart Life application. For optimal performance, ensure your router is online and the Wi-Fi module is kept close to the router.

- 1. Download the App:** Download the eWeLink or Smart Life app from your smartphone's app store or by visiting <http://app.coolkit.cc/dl.html>.
- 2. Prepare for Pairing:** Ensure your smartphone's 2.4G Wi-Fi, Bluetooth, and Location services are enabled.
- 3. Enter Pairing Mode:** Long press the configure button on the smart switch for 5 seconds. The night light indicator will begin to flash, indicating it is in pairing mode.
- 4. Add Device in App:** Open the eWeLink or Smart Life app. Tap the "+" icon to add a new device. Select "Bluetooth Pairing" or allow the app to scan for nearby devices.
- 5. Confirm Device:** Once the app detects the device (e.g., "DeviceM210f"), confirm to add it.
- 6. Complete Setup:** Follow the on-screen prompts to connect the device to your 2.4G Wi-Fi network and name it.

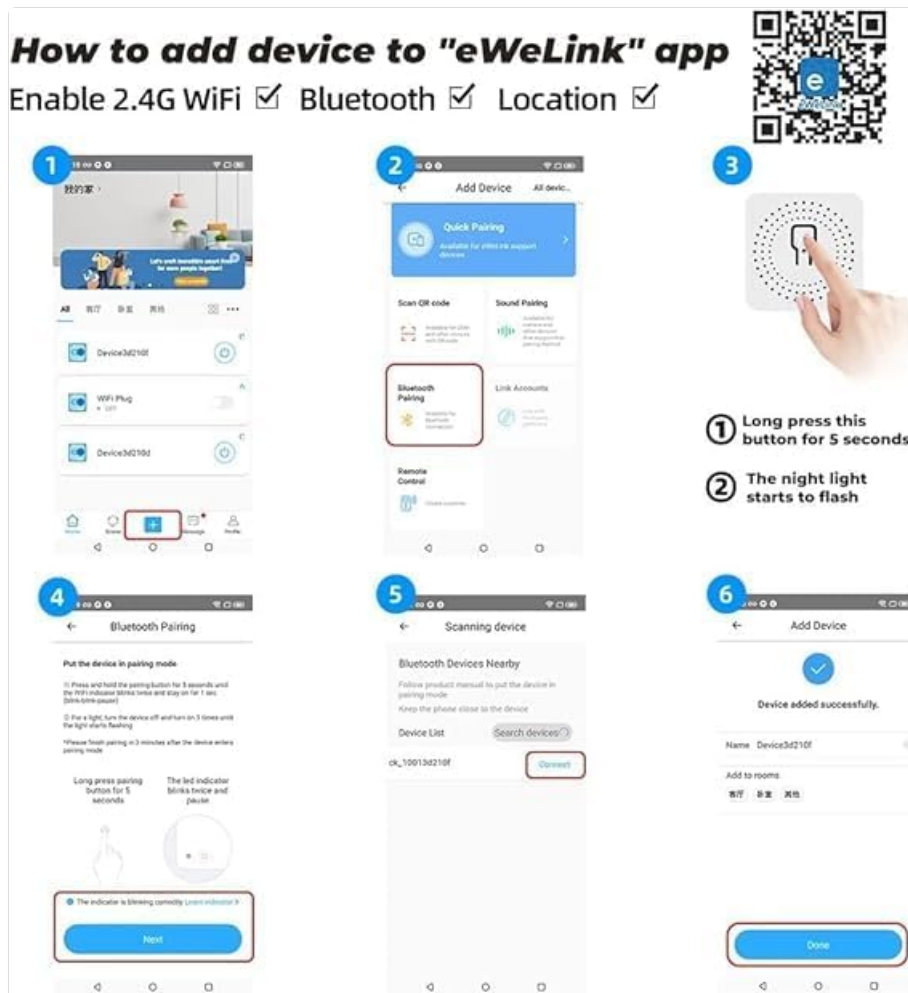


Figure 5.2: Step-by-step guide within the eWeLink app for adding and pairing the smart switch via Bluetooth.

## 6. OPERATING

### 6.1 Working Modes

The smart switch supports two primary working modes:

- **Self-Locking (On/Off) Mode:** In this mode, the relay acts as a traditional switch. A single command toggles its state (on to off, or off to on), and it remains in that state until another command is received.
- **Momentary (Inching/Point-Moving) Mode:** In this mode, the relay acts like a push-button. It momentarily changes its state (e.g., closes the circuit) for a set duration and then automatically returns to its original state. This is ideal for applications like garage door openers or gate controls.

You can configure these modes within the eWeLink or Smart Life app.

### 6.2 Remote Control via App

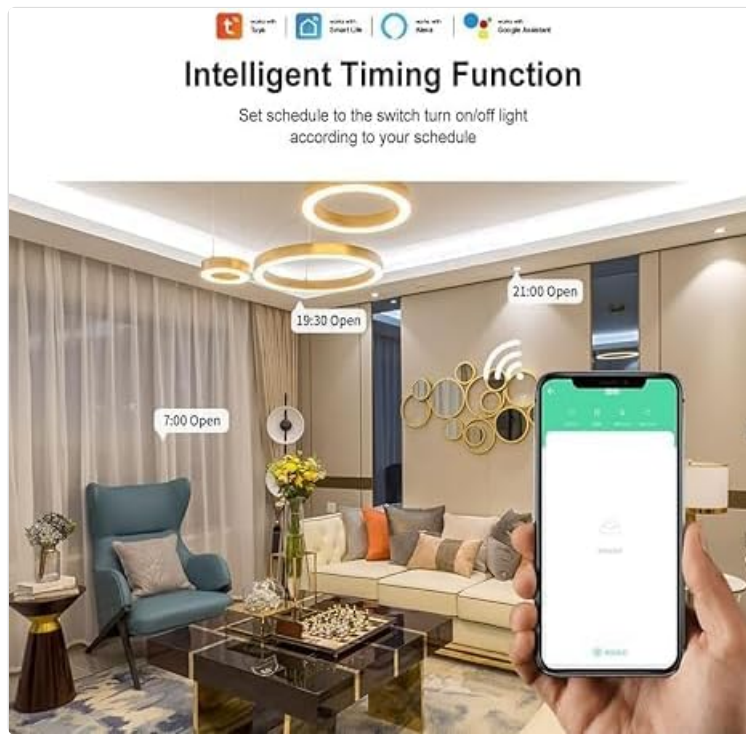
Once paired, you can control the connected appliance from anywhere using the eWeLink or Smart Life app on your smartphone, provided you have an internet connection (2G/3G/4G mobile network or Wi-Fi).

### 6.3 Timing and Scheduling

The app allows you to set various timing functions to automate your appliances:

- **Schedules:** Set specific times for the device to turn on or off daily or on selected days.
- **Countdown Timer:** Set a timer for the device to turn off after a specified duration.
- **Cycle Timer:** Configure the device to repeatedly turn on and off at set intervals.

- **Sunrise/Sunset:** Automate actions based on local sunrise and sunset times.



**Figure 6.1:** Screenshot of the eWeLink app demonstrating the intelligent timing function, allowing users to set schedules for device operation.

## 6.4 Voice Control

The smart switch is compatible with Amazon Alexa and Google Assistant. After linking your eWeLink or Smart Life account to your voice assistant, you can use voice commands to control your connected appliances.

- **Example Commands:**
  - "Alexa, turn on [Device Name]."
  - "Hey Google, turn off [Device Name]."



Figure 6.2: The smart switch is compatible with the eWeLink app, Amazon Alexa, and Google Home, enabling diverse control options.

## 6.5 Multi-Person Sharing

You can share control of your smart switch with family members or other authorized users through the eWeLink or Smart Life app. This allows multiple individuals to manage the connected appliances.

## 7. MAINTENANCE

---

- **Cleaning:** Use a dry, soft cloth to clean the device. Do not use harsh chemicals or abrasive cleaners.
- **Connection Check:** Periodically inspect wiring connections to ensure they are secure and free from corrosion.
- **Firmware Updates:** Keep the eWeLink or Smart Life app updated to receive the latest features and security enhancements. The app may also prompt for device firmware updates.

## 8. TROUBLESHOOTING

---

- **Device Not Responding:**
  - Check if the device is powered on.

- Ensure your Wi-Fi router is online and the device is within range.
  - If Wi-Fi is disconnected, try controlling via Bluetooth if you are in close proximity.
  - Restart the device by disconnecting and reconnecting its power supply.
- **Pairing Failure:**
    - Ensure your phone's 2.4G Wi-Fi, Bluetooth, and Location services are enabled.
    - Confirm your Wi-Fi network is 2.4GHz, as 5GHz networks are not supported.
    - Make sure the device is in pairing mode (flashing indicator light).
    - Try moving the device closer to your Wi-Fi router during pairing.
- **Voice Control Issues:**
    - Verify that your eWeLink/Smart Life account is correctly linked to Alexa or Google Assistant.
    - Check the device name in the app and use that exact name in your voice commands.
    - Ensure your voice assistant device is connected to the internet.

## 9. WARRANTY AND SUPPORT

---

**Warranty:** Please refer to the product packaging or the manufacturer's official website for detailed warranty information regarding your Huacae EWeLink Smart Switch.

**Support:** For technical assistance, troubleshooting, or any product-related inquiries, please contact Huacae customer service through their official channels or the support section within the eWeLink/Smart Life application.