

## CYCLAMI ZKT PUMP-US

# CYCLAMI Tire Booster 1.2L Aluminum Alloy Inflator User Manual

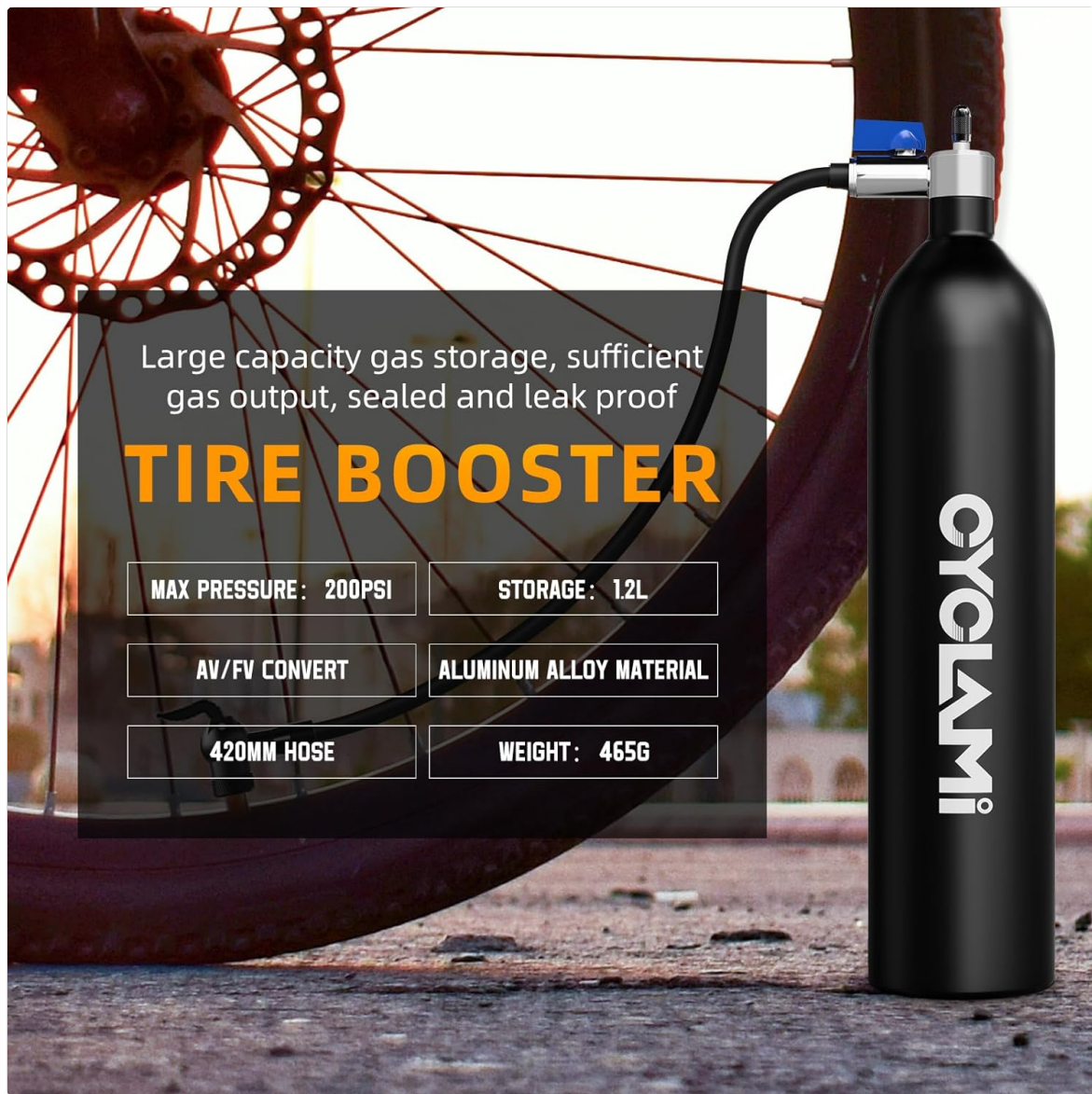
Model: ZKT PUMP-US

## 1. PRODUCT OVERVIEW AND COMPONENTS

The CYCLAMI Tire Booster is a portable air storage tank designed to provide a rapid burst of air for seating tubeless bicycle tires. It features a 1.2L capacity and can be charged up to 200 PSI, making it suitable for various bicycle types including MTB, road, cyclocross, and fat bikes.



**Image 1.1:** The CYCLAMI Tire Booster and its retail packaging. This image displays the sleek black aluminum alloy cylinder and the included hose and valve head.



**Image 1.2:** An overview of the Tire Booster highlighting its key specifications: Max Pressure 200 PSI, Storage 1.2L, AV/FV Convertibility, Aluminum Alloy Material, 420mm Hose, and Weight 465g.

## 2. SETUP AND PREPARATION

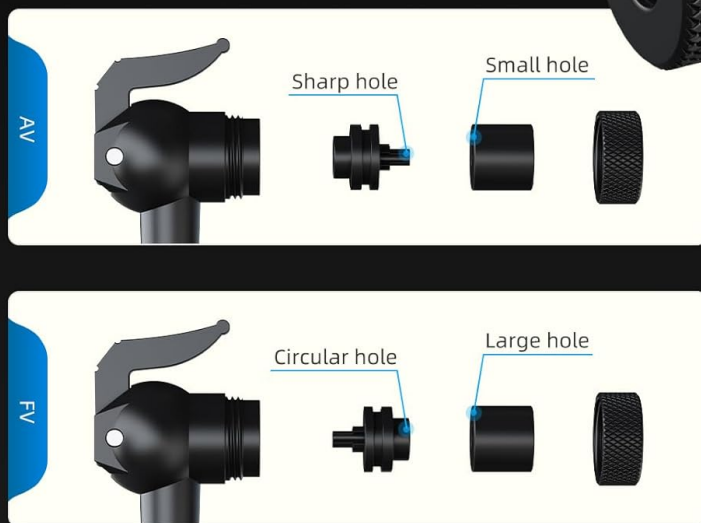
### 2.1 Valve Head Conversion (Presta/Schrader)

The Tire Booster features a universal valve head compatible with both Presta (FV) and Schrader (AV) valves. To switch between valve types, simply reverse the internal components of the nozzle head.

1. Unscrew the outer cap of the nozzle head.
2. Remove the internal rubber gasket and the plastic insert.
3. For Presta (FV) valves, ensure the circular hole of the plastic insert faces outwards.
4. For Schrader (AV) valves, ensure the sharp hole of the plastic insert faces outwards.
5. Reinsert the rubber gasket and plastic insert in the correct orientation, then screw the outer cap back on securely.

# AV/FV CONVERT

AV/FV universal  
Easy to operate, suitable for  
various bicycle models



**Image 2.1:** Detailed diagram illustrating the conversion process for the AV (Schrader) and FV (Presta) valve head.  
Note the different orientations of the internal components for each valve type.

## 2.2 Preparing the Tire for Inflation

Before inflating, ensure the tubeless tire is properly seated against the rim. A tight seal is crucial to prevent air leakage during the initial inflation burst. If there are visible gaps between the tire bead and the rim, the booster may not effectively seat the tire.

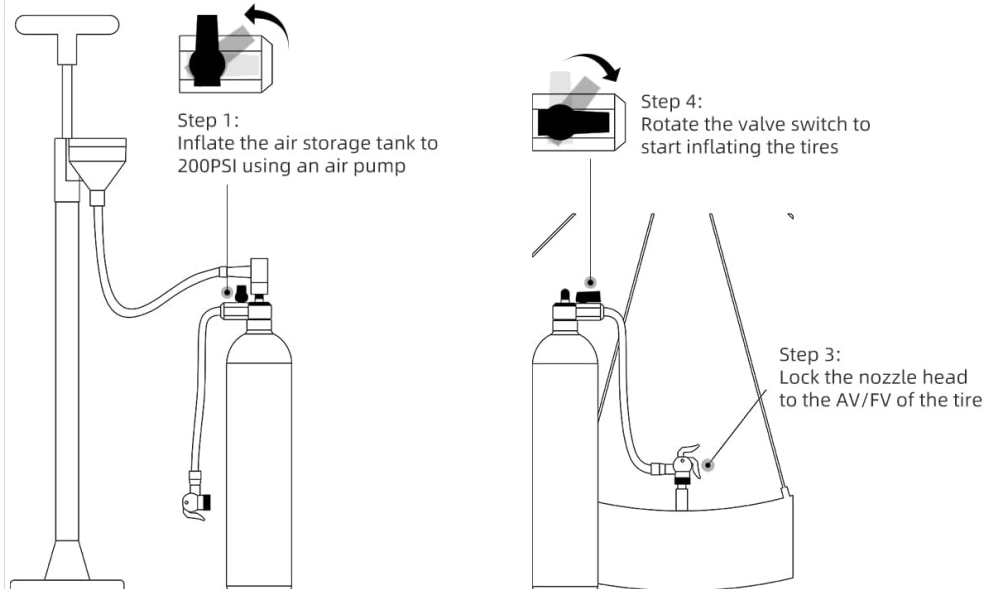
# OPERATING INSTRUCTIONS

Step 1: Use a manual or electric pump to inflate the air storage tank to 150-200 PSI

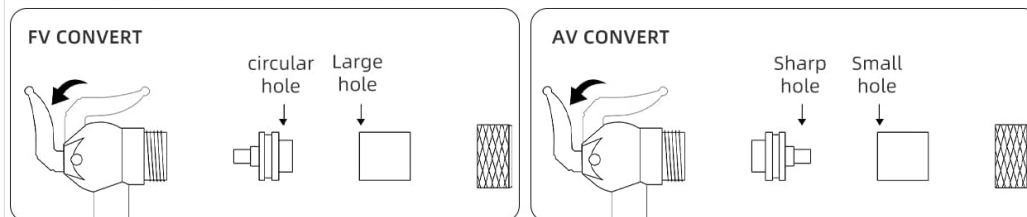
Step 2: Select AV or FV mode based on the tire nozzle

Step 3: Lock the nozzle head to the AV/FV of the tire

Step 4: Rotate the valve switch to start inflating



Step 2: Switch the nozzle head according to the tire nozzle



**Image 2.2:** Visual guide emphasizing the importance of a tight seal between the vacuum tire and the wheel frame. A large gap will prevent successful inflation.

## 3. OPERATING INSTRUCTIONS

### 3.1 Charging the Tire Booster

The Tire Booster must be charged with air using an external pump before use. It can be inflated with a manual floor pump or an electric air compressor.

1. Connect your external pump to the Schrader valve on the top of the Tire Booster.
2. Inflate the air storage tank to 150-200 PSI. Do not exceed 200 PSI.
3. Once charged, disconnect the external pump.





**Image 3.1:** The CYCLAMI Tire Booster connected to a floor pump, demonstrating the process of filling the air tank. The blue valve on the booster should be in the 'storage' position during charging.

### 3.2 Inflating a Bicycle Tire

Follow these steps to inflate your bicycle tire using the charged Tire Booster:

1. Ensure the valve head on the booster's hose is configured for your tire's valve type (Presta or Schrader) as described in Section 2.1.
2. Connect the booster's nozzle head securely to the tire's valve stem.
3. Rotate the blue valve switch on the booster from the 'storage' position to the 'inflation' position. This will release the stored air rapidly into the tire.
4. Listen for the tire bead to audibly 'pop' into place, indicating a successful seal.
5. Once the tire is seated, disconnect the booster. The tire will have some initial pressure, but you will need to use a regular pump to achieve the desired riding pressure.

# ATTENTION SHOULD BE PAID BEFORE INFLATING

The vacuum tire should be tightly attached to the wheel frame without any gaps that may cause air leakage during inflation

**Yes**

The vacuum tire is tightly attached to the wheel frame without any gaps

There is a large gap between the vacuum tire and the wheel frame

**No**

**Image 3.2:** Diagram illustrating the two positions of the valve switch: 'Switch to storage mode to inflate the gas tank' and 'Switch to inflation mode to inflate the tire'.

# LARGE CAPACITY GAS STORAGE CIRCULAR USE

Fill the air tank with an air pump to instantly inflate the vacuum tire, ensuring your ride is not delayed



**Image 3.3:** A comprehensive visual guide detailing the four main steps of operating the Tire Booster: 1) Inflate the air storage tank, 2) Select AV or FV mode, 3) Lock the nozzle head to the tire, and 4) Rotate the valve switch to inflate.

## 4. MAINTENANCE

Proper maintenance ensures the longevity and reliable performance of your CYCLAMI Tire Booster.

- **Cleaning:** Wipe the exterior of the booster with a clean, damp cloth after use. Avoid using harsh chemicals or abrasive materials.
- **Storage:** Store the Tire Booster in a cool, dry place away from direct sunlight and extreme temperatures. It is recommended to store it with a small amount of pressure (e.g., 20-30 PSI) to maintain seal integrity, but not fully charged.
- **Inspect Hoses and Seals:** Periodically check the hose and valve head for any signs of wear, cracks, or damage. Ensure all connections are tight. Replace components if damage is observed.
- **Valve Core:** Ensure the valve core on the booster's inflation port is clean and free of debris to allow for efficient charging.



## 5. TROUBLESHOOTING

If you encounter issues with your Tire Booster, refer to the following troubleshooting guide:

Problem	Possible Cause	Solution
Tire does not seat or inflates slowly.	<ul style="list-style-type: none"><li>• Insufficient air pressure in booster.</li><li>• Tire bead not properly seated on rim.</li><li>• Valve head not securely attached to tire valve.</li><li>• Incorrect valve head configuration (AV/FV).</li></ul>	<ul style="list-style-type: none"><li>• Ensure booster is charged to 150-200 PSI.</li><li>• Apply soapy water to tire beads and rim to aid seating. Ensure no gaps (refer to Image 2.2).</li><li>• Check that the nozzle head is firmly locked onto the tire valve.</li><li>• Verify the valve head is correctly configured for your tire's valve type (Presta or Schrader).</li></ul>
Air leaks from booster during charging or inflation.	<ul style="list-style-type: none"><li>• Loose connections.</li><li>• Damaged hose or seals.</li><li>• Valve switch not fully engaged.</li></ul>	<ul style="list-style-type: none"><li>• Tighten all connections, including the hose to the booster and the valve head.</li><li>• Inspect hose and seals for damage; replace if necessary.</li><li>• Ensure the blue valve switch is fully rotated to the desired position (storage or inflation).</li></ul>
Booster cannot be charged to full pressure.	<ul style="list-style-type: none"><li>• External pump issue.</li><li>• Booster's internal valve core obstruction.</li></ul>	<ul style="list-style-type: none"><li>• Check your external pump for proper function.</li><li>• Inspect the Schrader valve core on the booster for debris or damage.</li></ul>

## 6. SPECIFICATIONS

Feature	Detail
Model	ZKT PUMP-US
Brand	CYCLAMI
Material	Aluminum Alloy
Storage Capacity	1.2 Liters

Feature	Detail
Maximum Pressure	200 PSI
Item Weight	1.03 pounds (approx. 465g)
Product Dimensions	2.95 x 13.5 x 2.95 inches
Valve Compatibility	Presta (FV) / Schrader (AV) Universal






## 7. WARRANTY AND SUPPORT

For warranty information, product support, or to inquire about replacement parts, please contact CYCLAMI customer service. Details regarding specific warranty periods and terms are typically provided with your purchase documentation or can be found on the official CYCLAMI website.

Please retain your proof of purchase for any warranty claims.

© 2024 CYCLAMI. All rights reserved.

### Related Documents - ZKT PUMP-US

	<p><a href="#">CYCLAMI Tire Inflator Operating Instructions</a></p> <p>Comprehensive operating instructions for the CYCLAMI tire inflator, detailing setup, air tank inflation, nozzle conversion for Presta (FV) and Schrader (AV) valves, and the inflation process for bicycle tires.</p>
	<p><a href="#">CYCLAMI A3 MAX Pump User Manual</a></p> <p>Comprehensive user manual for the CYCLAMI A3 MAX portable electric tire inflator, covering setup, operation, maintenance, and troubleshooting for bicycles and cars.</p>
	<p><a href="#">CYCLAMI AM6 Mini Electric Air Pump User Manual</a></p> <p>User manual for the CYCLAMI AM6 Mini Electric Air Pump, a portable and rechargeable device for inflating tires. Includes specifications, operating instructions, charging details, and troubleshooting notes.</p>
	<p><a href="#">CYCLAMI AM6 Pro Mini Electric Air Pump User Manual   Portable Digital Inflator</a></p> <p>Comprehensive user manual for the CYCLAMI AM6 Pro Mini Electric Automatic Air Pump. Learn how to use, set pressure, and maintain your portable digital inflator for bike tires.</p>
	<p><a href="#">CYCLAMI X7 Bicycle Light User Manual</a></p> <p>CYCLAMI X7 Bicycle Light User Manual: A comprehensive guide to the 1000-lumen, USB rechargeable, waterproof smart headlight for road and mountain bikes. Learn about installation, operation, features, and maintenance.</p>

无线智能充气泵  
使用说明书



产品型号: HW-125

CYCLAMI HW-125

CYCLAMI HW-125