

## BRINKS 887132

# BRINKS 50mm Dial Combination Padlock User Manual

Model: 887132

## INTRODUCTION

This manual provides essential information for the proper use and maintenance of your BRINKS 50mm Dial Combination Padlock. Please read these instructions carefully to ensure optimal performance and security.

## PRODUCT OVERVIEW

The BRINKS 50mm Dial Combination Padlock is designed for security in various applications, including school lockers, gym lockers, bikes, and storage containers. It features a durable anodized body and a hardened steel shackle for enhanced cut resistance.



This image displays the BRINKS 50mm Dial Combination Padlock. It features a white dial with red markings for numbers 0-35, a black center with the BRINKS logo, and a silver hardened steel shackle at the top.

### Key Features:

- **50mm Anodized Lock Body:** Durable finish designed to resist wear and corrosion.
- **Chrome Plated, Hardened Steel Shackle:** Provides enhanced cut resistance.
- **3-Digit Combination Lock:** Offers keyless convenience with a preset combination.
- **Versatile Use:** Suitable for school lockers, gym lockers, storage containers, and bikes.

## SETUP AND INITIAL USE

---

This padlock comes with a factory-preset 3-digit combination. The combination cannot be changed by the user. The preset combination is typically found on a sticker or tag attached to the lock packaging at the time of purchase. Please retain this information for future reference.

### To Open the Padlock:

1. Locate the preset 3-digit combination provided with your lock.
2. Align the numbers of the combination with the indicator mark on the top of the dial.
3. Pull up on the shackle to open the lock.

## OPERATING INSTRUCTIONS

---

### Locking the Padlock:

1. Ensure the shackle is fully inserted into the lock body.
2. Scramble the numbers on the dial to a random sequence. This secures the lock.

### Unlocking the Padlock:

1. Rotate the dial to align your preset 3-digit combination with the indicator mark.
2. Pull the shackle upwards to release it.

## MAINTENANCE

Your BRINKS padlock is designed for durability and requires minimal maintenance. To ensure its longevity:

- Keep the lock clean and free from dirt and debris.
- Periodically apply a small amount of graphite lubricant or a silicone-based spray to the shackle and internal mechanism to maintain smooth operation. Avoid oil-based lubricants as they can attract dirt.
- Store the lock in a dry environment when not in use to prevent corrosion.

## TROUBLESHOOTING

Issue	Possible Cause / Solution
Lock is difficult to open or close.	<b>Dirt/Debris:</b> Clean the lock mechanism. <b>Lack of Lubrication:</b> Apply graphite or silicone lubricant. <b>Incorrect Combination:</b> Double-check that the correct preset combination is aligned precisely.
Shackle is stuck.	<b>Corrosion:</b> Apply penetrating oil and gently work the shackle. <b>Misalignment:</b> Ensure the combination is perfectly aligned before attempting to open.
Cannot remember the preset combination.	The combination is factory-preset and cannot be reset by the user. Refer to the original packaging or documentation for the combination. If lost, the lock may need to be replaced.

## SPECIFICATIONS

Feature	Detail
Brand	BRINKS
Model Number	887132
Lock Type	3-Digit Dial Combination Padlock
Body Material	Anodized Metal
Shackle Material	Chrome Plated, Hardened Steel
Body Width	50mm
Color	White
Dimensions (L x W x H)	3 x 1 x 4 inches
Item Weight	6.9 ounces
UPC	039208251167


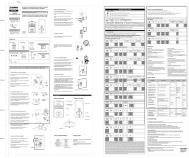
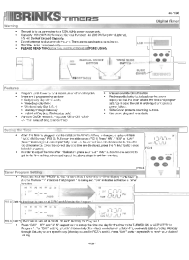

## WARRANTY AND SUPPORT

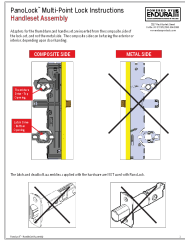
BRINKS products are manufactured to high-quality standards. For specific warranty information or technical support, please refer to the documentation included with your purchase or visit the official BRINKS website. Keep your proof of purchase for warranty claims.

For further assistance, you may contact BRINKS customer service through their official channels.

© 2024 BRINKS. All rights reserved.

### Related Documents - 887132

	<p><a href="#">Brinks 44-1051 Outdoor Programmable Timer: Instructions and Setup Guide</a></p> <p>Detailed instructions for setting up and programming the Brinks 44-1051 outdoor digital timer. Learn how to set current time, create up to 6 daily on/off schedules, and use manual override and random functions.</p>
	<p><a href="#">Brinks 999-70027 Fingerprint and Touchpad Electronic Deadbolt Installation Guide</a></p> <p>Detailed installation and programming instructions for the Brinks 999-70027 electronic deadbolt lock. Learn how to set up fingerprint and touchpad access, manage user codes, and troubleshoot common issues for enhanced home security.</p>
	<p><a href="#">Brinks 44-1030 Digital Timer: Setting Instructions and Warranty Information</a></p> <p>User guide for the Brinks 44-1030 digital timer, covering time setting, program scheduling, and warranty details. Learn how to set your timer for optimal use.</p>
	<p><a href="#">Brinks Padlocks and Portable Security Limited Lifetime Warranty Guide</a></p> <p>Official warranty information for Brinks Padlocks and Portable Security products, detailing coverage, limitations, and claim procedures from Hampton Products International.</p>



[PanoLock Multi-Point Lock Handleset Assembly Instructions](#)

Comprehensive instructions for assembling the PanoLock™ Multi-Point Lock Handleset by Endura. This guide details adapter selection and installation steps for various lock brands and styles, ensuring proper fit and function.