

Phomemo A30

Phomemo A30 Thermal Transfer Label Printer User Manual

Model: A30 (Item Model Number: M836)

1. Introduction

This manual provides detailed instructions for the safe and efficient use of your Phomemo A30 Thermal Transfer Label Printer. Please read this manual thoroughly before operating the device and retain it for future reference.

PRODUCT OVERVIEW

The Phomemo A30 is a compact, portable thermal transfer label printer designed for various labeling needs. It connects wirelessly via Bluetooth to smartphones and tablets, offering ink-free printing with customizable designs.



Image 1.1: The Phomemo A30 Label Printer, showcasing its design and various label outputs.

KEY FEATURES

- **Thermal Transfer Printing:** Utilizes thermal transfer technology for durable, ink-free labels.
- **Bluetooth Connectivity:** Seamless wireless connection to compatible smart devices.
- **Portable Design:** Compact and lightweight for easy transport and use.
- **Rechargeable Battery:** Built-in 1200mAh battery for cordless operation.
- **Durable Labels:** Labels are resistant to water, oil, and abrasion, suitable for indoor and outdoor use.
- **Versatile Label Types:** Supports pre-cut, continuous, patterned, magnetic, fabric iron-on, glitter, and luminous labels.

- **Smart App Integration:** Features the 'Print Master' app with extensive customization options, including fonts, symbols, and templates.

2. Setup

2.1 UNBOXING AND PACKAGE CONTENTS

Carefully unpack all items from the box. Ensure the following components are present:

- Phomemo A30 Label Printer
- Roll Paper for Printer (pre-installed or separate)
- User Manual (this document)
- USB Cable (Type-C)

2.2 CHARGING THE PRINTER

Before first use, fully charge the printer. Connect the provided USB Type-C cable to the printer's charging port and a compatible USB power adapter (not included). The indicator light will show charging status.

2.3 APP INSTALLATION

The Phomemo A30 operates via the 'Print Master' application. Download the app from your device's app store (iOS or Android) or scan the QR code provided in the quick start guide (if applicable).

2.4 BLUETOOTH PAIRING

1. Ensure the printer is powered on.
2. Enable Bluetooth on your smartphone or tablet.
3. Open the 'Print Master' app.
4. Within the app, search for available devices and select 'Phomemo A30' to connect. The app will indicate a successful connection.



Image 2.1: The Phomemo A30 printer demonstrating intelligent connectivity with a smartphone and laptop.

2.5 LOADING LABEL CARTRIDGE

The A30 printer uses label cartridges. Open the printer cover, insert the label cartridge according to the directional indicators, and ensure it clicks into place. Close the cover. The printer automatically recognizes compatible consumables within the supported size of 12mm (0.47 inch) width.

3. Operating Instructions

3.1 POWER ON/OFF

- **Power On:** Press and hold the power button until the indicator light illuminates.
- **Power Off:** Press and hold the power button until the indicator light turns off.

3.2 USING THE 'PRINT MASTER' APP

The 'Print Master' app is your primary interface for creating and printing labels. It offers a wide range of

customization options:

- **Text Input:** Enter desired text for your labels.
- **Fonts & Styles:** Choose from over 200 built-in fonts and adjust size, bold, italic, etc.
- **Symbols & Icons:** Access over 600 symbols to enhance your labels.
- **Templates:** Utilize 200+ border templates and various pre-designed label templates for quick creation.
- **QR Codes & Barcodes:** Generate and print QR codes or barcodes directly from the app.
- **Images & Timestamps:** Insert images or add timestamps to your labels.



Image 3.1: The 'Print Master' app interface, illustrating the extensive customization options available.

3.3 PRINTING PROCESS

1. Design your label within the 'Print Master' app.
2. Ensure the printer is connected via Bluetooth.
3. Tap the 'Print' button in the app.
4. The printer will feed and print the label.

3.4 USING THE BUILT-IN CUTTER

After printing, use the integrated paper cutter to cleanly separate the label from the roll. Slide the cutter lever across the label exit slot to achieve a straight edge.

3.5 SUPPORTED LABEL TYPES AND APPLICATIONS

The A30 supports a wide range of label types, expanding its utility:

- **Pre-cut/Continuous Labels:** Standard labels for general use.
- **Patterned Labels:** Labels with decorative designs.
- **Refrigerator Magnetic Labels:** For organizing items on magnetic surfaces.
- **Fabric Iron-on Labels:** For clothing and textile identification.
- **Glitter Labels:** For decorative purposes.
- **Luminous Labels:** Labels that glow in the dark for visibility in low light.



Image 3.2: The Phomemo A30 printer customizing gift ribbons with personalized content.

Make Classification A Breeze

cleansing lotion
06-23-2026

loose powder
12-16-2025



Image 3.3: Example of magnetically sticking labels on a refrigerator for organization.



Iron-On Sticker

DIY Projects

Henry

Image 3.4: Luminous labels applied to light switches for easy identification in the dark.

Gift Ribbon Printing

Customize your gift ribbons with personalized content.

Happy Birthday! Happy Birthday!

Merry Christmas Merry Christmas

I love you, Mom I love you, Mom



Image 3.5: An iron-on sticker being applied to clothing, demonstrating its use for fabric labeling.

4. Maintenance

4.1 CLEANING THE PRINTER HEAD

To ensure optimal print quality, regularly clean the thermal print head. Use a soft, lint-free cloth lightly dampened with isopropyl alcohol. Gently wipe the print head surface. Ensure the printer is off and cool before cleaning.

4.2 BATTERY CARE

- Avoid fully discharging the battery frequently.
- Charge the printer regularly, even if not in use, to maintain battery health.
- Do not expose the printer to extreme temperatures, as this can affect battery life.

4.3 STORAGE

Store the printer in a cool, dry place away from direct sunlight and excessive dust. If storing for an extended period, ensure the battery is partially charged (around 50%) and recharge every few months.

5. Troubleshooting

This section addresses common issues you might encounter with your Phomemo A30 printer.

Problem	Possible Cause	Solution
Printer does not power on	Low battery; Power button not pressed correctly	Charge the printer; Press and hold the power button firmly.
Cannot connect via Bluetooth	Bluetooth off on device; Printer not in pairing mode; App issue	Ensure Bluetooth is enabled; Restart printer and app; Try pairing again.
Poor print quality (faint, blurry)	Dirty print head; Incorrect label type; Low battery	Clean the print head (see Section 4.1); Ensure correct thermal transfer labels are used; Charge the printer.
Labels not feeding correctly	Label cartridge improperly installed; Label jam	Reinstall the label cartridge; Open cover and clear any jammed labels.
App features require subscription	Some advanced templates/features are premium	Utilize free features or consider purchasing a subscription if desired.

If the issue persists, please refer to the 'Print Master' app's help section or contact Phomemo customer support.

6. Specifications

Feature	Detail
Brand	Phomemo
Model Name	A30 (M836)
Printing Technology	Thermal Transfer
Connectivity Technology	Bluetooth

Feature	Detail
Hardware Interface	USB Type C
Printer Output	Monochrome
Max Print Speed Monochrome	5 ppm
Max Black and White Print Resolution	203 dpi
Compatible Devices	Smartphones, Tablets (Android, iOS)
Max Media Size	15mm
Sheet Size	14 millimeters
Printer Ink Type	No Ink (Thermal Transfer)
Batteries	1 A battery required (included)
Product Dimensions	8.27 x 1.85 x 2.56 inches
Item Weight	5.6 ounces (160 Grams)
Included Components	Label Printer, Roll Paper for Printer, User Manual, USB Cable

7. Warranty and Support

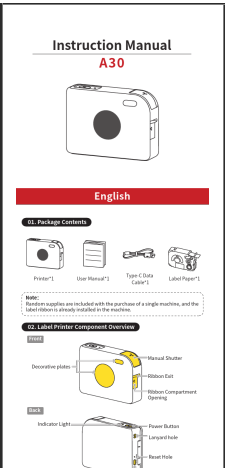
7.1 WARRANTY INFORMATION

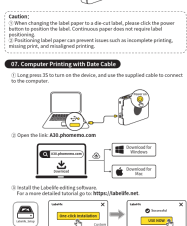
The Phomemo A30 Thermal Transfer Label Printer comes with a limited warranty. Please refer to the warranty card included in your package or the official Phomemo website for specific terms and conditions regarding warranty coverage and duration.

7.2 CUSTOMER SUPPORT

For technical assistance, troubleshooting not covered in this manual, or warranty claims, please contact Phomemo customer support through their official website or the contact information provided with your product documentation.

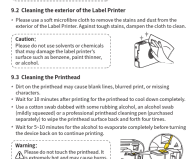
Related Documents - A30





Method I:
Visit download.qq-in-isp.cn for how-to videos, a detailed version of the manual, and FAQs.

Method II:
Please scan the code to view the operation video, detailed version of the electronic manual, frequently asked questions.



Comprehensive user manual for the Phomemo A30 portable label maker, covering setup, app download, usage, maintenance, and troubleshooting. Learn how to print labels wirelessly and via USB.

