



[Manuals.plus](#) /

› [Southwire](#) /

› Southwire MSBMMT1G 1 Gang Multi Mount Device Box Instruction Manual

Southwire MSBMMT1G

Southwire MSBMMT1G 1 Gang Multi Mount Device Box Instruction Manual

Model: MSBMMT1G

1. PRODUCT OVERVIEW

The Southwire MSBMMT1G 1 Gang Multi Mount Device Box is designed for versatile electrical installations. It features a thoughtful design including 1/2" knockouts for conduit connections and built-in wall dividers for safe separation of mixed voltages. This allows for running power and data lines within the same box. Constructed from high-impact polycarbonate, it offers durability and reliability for various applications.

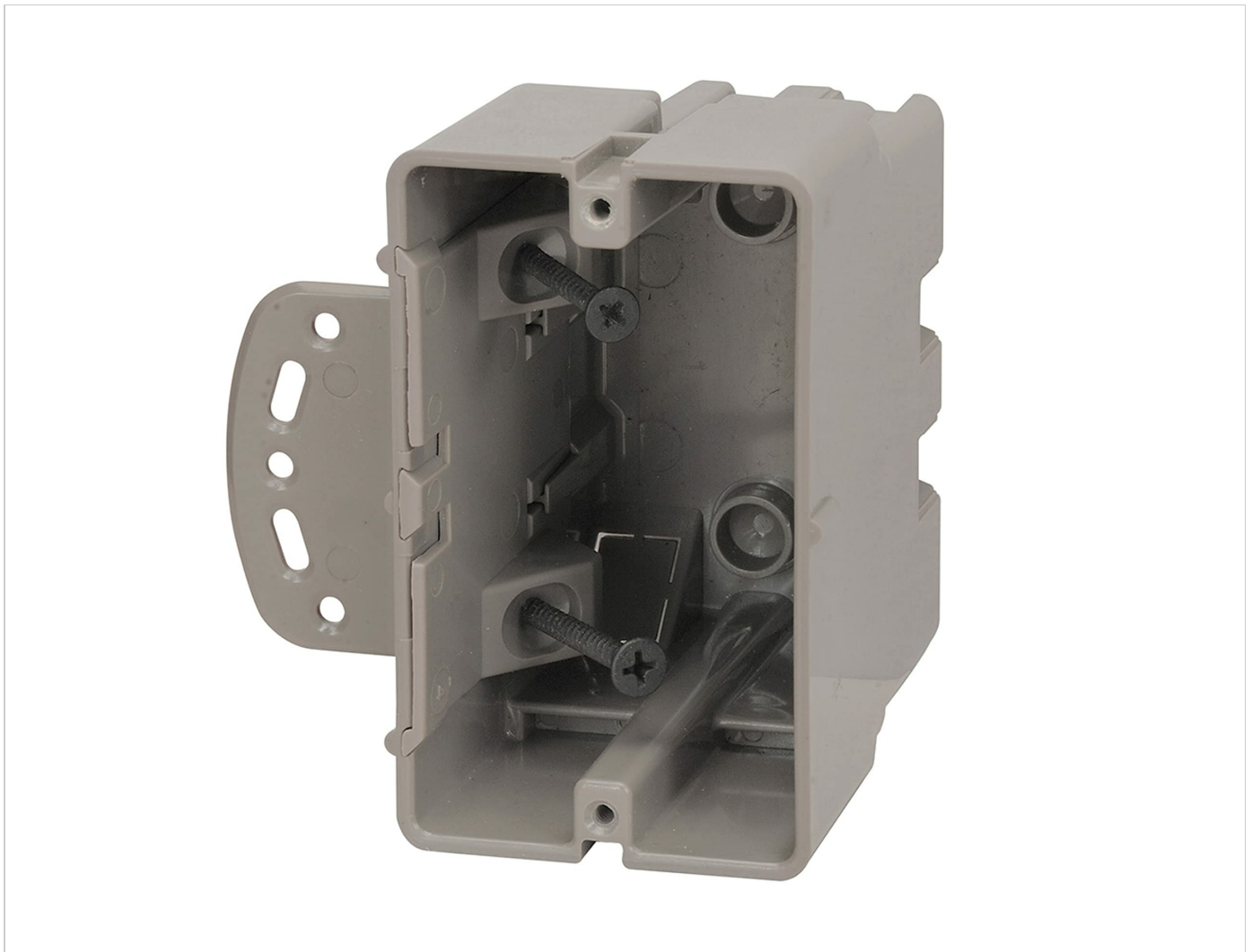


Image 1: Southwire MSBMMT1G 1 Gang Multi Mount Device Box, front view.

2. KEY FEATURES

- **Versatile Installation:** Designed for both horizontal and vertical installations. Includes removable nail tabs for easy metal stud mounting and top blocks for secure vertical placement.
- **Adjustable Capacity:** Removable interior mounting blocks allow for increased cubic inch capacity, providing more room for cables and connections.
- **Conduit Compatibility:** Features 1/2" knockouts compatible with blue tube or PVC conduit for streamlined cable management.
- **Mixed Voltage Separation:** Low voltage wall dividers enable safe separation of mixed voltages within the same box, suitable for combining power and data lines.
- **Durable Construction:** Made from high-impact polycarbonate and backed by UL Listing and RoHS compliance. Includes heavy-duty mounting screws for secure installation.

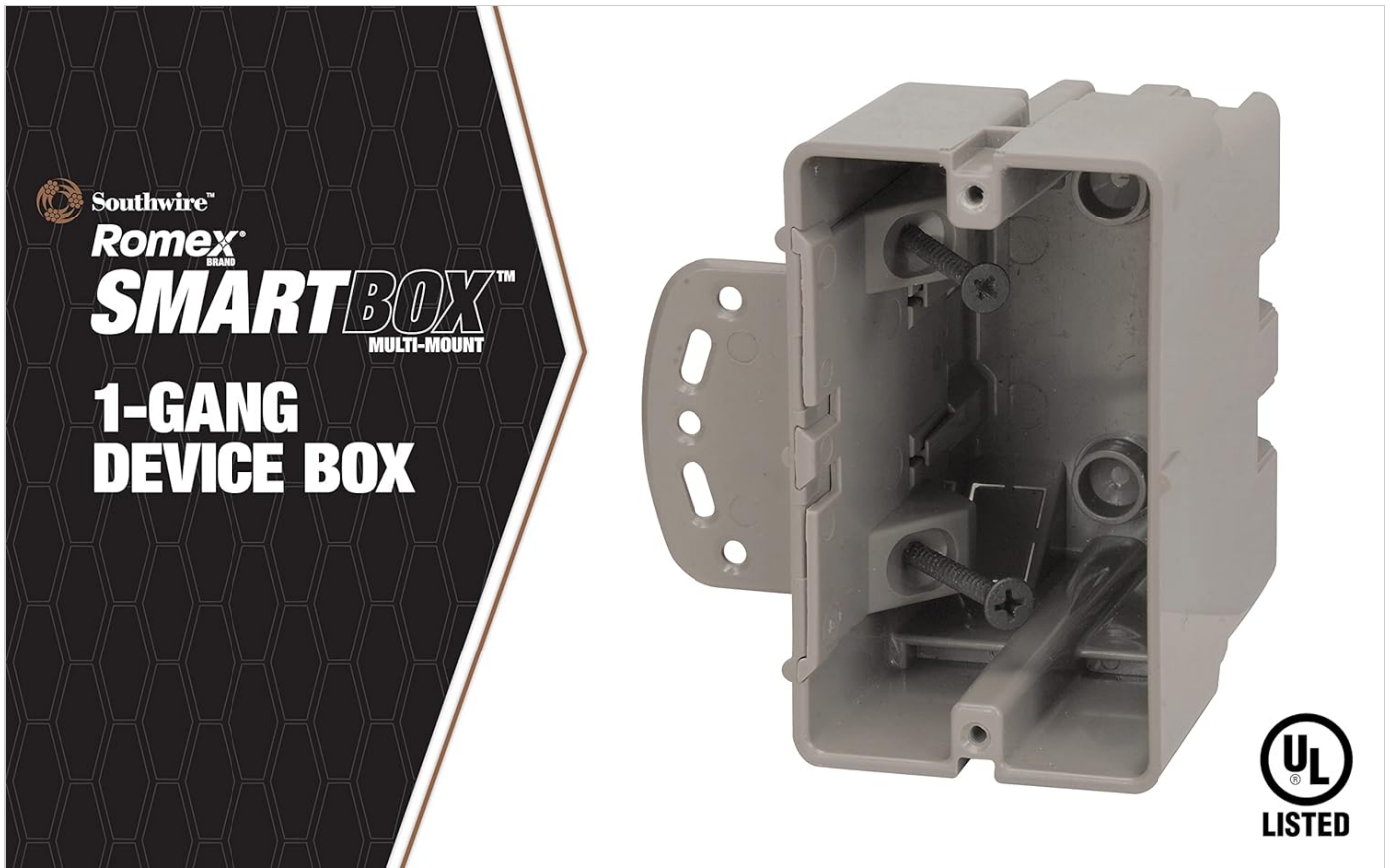


Image 2: Internal view of the device box highlighting features like mounting screws and knockouts.

3. SPECIFICATIONS

Material	Polycarbonate
Brand	Southwire
Color	Gray
Style	Multi-Mount
Product Dimensions (D x W x H)	3.5"D x 2.4"W x 3.82"H
Model Number	MSBMMT1G
UPC	784297017704
Capacity	21 Cubic Inches
Installation Type	Screw-In
Specification Met	UL

4. INSTALLATION INSTRUCTIONS

Always ensure power is turned off at the circuit breaker before beginning any electrical work. Consult a qualified electrician if you are unsure about any steps.

4.1 Mounting the Device Box

1. **Prepare the Opening:** Cut an appropriate opening in the drywall or wall surface for the device box. Ensure the opening size matches the box dimensions for a snug fit.
2. **Positioning:** The Multi-Mount box can be installed horizontally or vertically. Position the box in the desired location, aligning it with a wood or metal stud if applicable.
3. **Secure Mounting:** Use the provided heavy-duty mounting screws to secure the box to the stud. The box features removable nail tabs for metal stud mounting. For wood studs, screw directly into the stud through the designated mounting points.
4. **Depth Adjustment:** The interior mounting screws allow for depth adjustability to accommodate various drywall thicknesses, tile backsplashes, or other wall treatments. Adjust these screws to ensure the box face is flush with the finished wall surface.



Image 3: Device box securely mounted to a wall stud, demonstrating horizontal installation.

4.2 Wiring Connections

1. **Knockouts:** Utilize the 1/2" knockouts for routing electrical conduit (blue tube or PVC) into the box.
2. **Cable Clamping:** The box includes non-metallic cable clamps built into the design. Ensure cables are properly secured when entering the box.
3. **Low Voltage Divider:** If mixing line voltage and low voltage wiring, use the adjustable interior low voltage divider plate to maintain safe separation between the two types of wiring.
4. **Device Mounting:** All 6-32 device holes are machine threaded for secure attachment of electrical devices (outlets, switches, etc.).



Image 4: Detail of the depth adjustable mounting screw, allowing the box to be flush with various wall finishes.



Image 5: View of the 1/2 inch knockouts and removable interior mounting blocks for increased wiring space.

5. OPERATION

The Southwire MSBMMT1G device box serves as a protective enclosure for electrical wiring and devices. Once installed

and wired correctly, its operation is passive, providing a safe and compliant housing for your electrical connections. Ensure all devices are properly secured and cover plates are installed to complete the installation.

6. MAINTENANCE

This electrical device box requires minimal maintenance. Periodically inspect the installed box and connected devices for any signs of damage, loose connections, or wear. Ensure cover plates remain securely fastened. If any issues are observed, disconnect power at the circuit breaker before inspecting or performing repairs.

7. TROUBLESHOOTING

Most issues related to electrical boxes stem from improper installation or wiring. If you experience problems with an electrical device housed in this box, consider the following:

- **No Power to Device:** Check the circuit breaker for the affected circuit. Verify all wire connections within the box are secure and correctly terminated.
- **Loose Device/Cover Plate:** Ensure all mounting screws for the device and cover plate are tightened appropriately.
- **Interference (for mixed voltage applications):** If using the low voltage divider and experiencing signal interference, re-verify that the divider is correctly installed and fully separating the different voltage wires.

For complex electrical issues, it is recommended to consult a licensed electrician.

8. PRODUCT VIDEOS

8.1 Smart Box Multi Mount Overview

Your browser does not support the video tag.

This video provides an overview of the Smart Box Multi Mount, showcasing its features and versatility for various installations.

9. SUPPORT AND WARRANTY

For technical support or inquiries regarding your Southwire MSBMMT1G 1 Gang Multi Mount Device Box, please visit the official Southwire website or contact their customer service. Information regarding product warranty is typically available on the product packaging or the manufacturer's website.

