

[manuals.plus](#) /

› [VilroCaz](#) /

› [VilroCaz Wooden Full Size Daybed with Storage Shelves and Desk Instruction Manual](#)

VilroCaz Wooden Full Size Daybed

VilroCaz Wooden Full Size Daybed with Storage Shelves and Desk Instruction Manual

Model: Wooden Full Size Daybed (Full Gray-m4)



INTRODUCTION

This manual provides essential information for the assembly, operation, and maintenance of your VilroCaz Wooden Full Size Daybed with Storage Shelves and Desk. Please read these instructions carefully before assembly and retain for future reference.



Image 1: The VilroCaz Full Size Daybed with integrated storage shelves and a side desk, shown in a gray finish.

IMPORTANT SAFETY INFORMATION

- Always follow the assembly instructions carefully to prevent instability or collapse.
- Do not exceed the maximum weight capacity of 450 pounds.
- Exercise caution around sharp edges and when operating the storage drawers and compartments to avoid potential injury.
- Ensure all connections are securely fastened before use. Periodically check and tighten all bolts and screws.

PACKAGE CONTENTS

Your VilroCaz Daybed package includes the following main components. Refer to the detailed parts list provided with your product for specific hardware and panel identification.

- Bed Frame Panels (Headboard, Footboard, Side Rails)

- Wooden Slats (10 pieces)
- Integrated Desk Unit
- Storage Shelf Components
- Three Storage Drawers
- Assembly Hardware (screws, bolts, connectors, etc.)
- Assembly Tools (basic tools may be included)

Note: The product comes in two separate packages, which may not arrive simultaneously. Please ensure all packages have been received before beginning assembly.

SETUP AND ASSEMBLY INSTRUCTIONS

Assembly of the VilroCaz Daybed requires careful attention to detail. It is recommended that two adults perform the assembly. Detailed step-by-step instructions and all necessary tools are provided within the product packaging.

General Assembly Guidelines:

1. **Unpack and Identify:** Carefully unpack all components and verify against the parts list. Lay out all pieces on a clean, soft surface to prevent scratches.
2. **Follow Sequence:** Adhere strictly to the numbered steps in the provided assembly manual. Do not skip steps or attempt to assemble parts out of order.
3. **Secure Connections:** Ensure all bolts, screws, and connectors are tightened firmly. Avoid over-tightening, which can damage the wood.
4. **Slat Installation:** Install the 10 wooden slats evenly across the bed frame to provide adequate mattress support.
5. **Drawer Assembly:** Assemble the three storage drawers according to the instructions, ensuring smooth operation.
6. **Integrated Desk and Shelves:** Attach the integrated desk and storage shelves securely to the main frame.

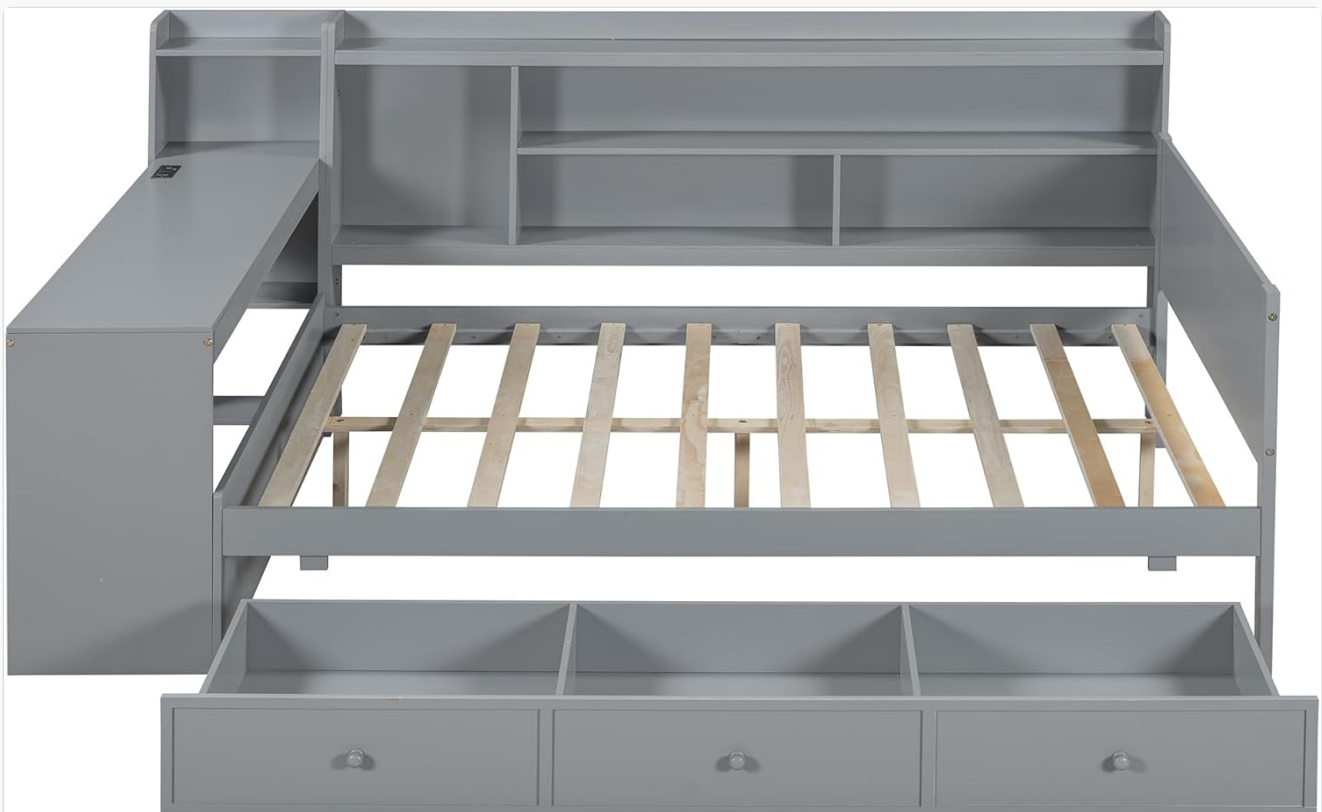


Image 2: Top-down view of the daybed frame, showing the slat system and the three drawer compartments.



Image 3: An angled view of the daybed frame, highlighting the structure and the pull-out drawers.

OPERATING INSTRUCTIONS

Storage Drawers:

The daybed features three spacious drawers located beneath the bed frame. To use, gently pull the knobs to slide the drawers open. Push them back in until they are flush with the bed frame for a neat appearance. These drawers are ideal for storing clothing, linens, or other personal items.



Image 4: The daybed with its three storage drawers partially open, revealing ample space for organization.

Integrated Desk with Charging Ports:

The side desk provides a convenient surface for work or study. It is equipped with built-in USB ports and power outlets. To use, simply plug your devices into the available ports. Ensure the power cord from the desk unit is connected to a wall outlet.

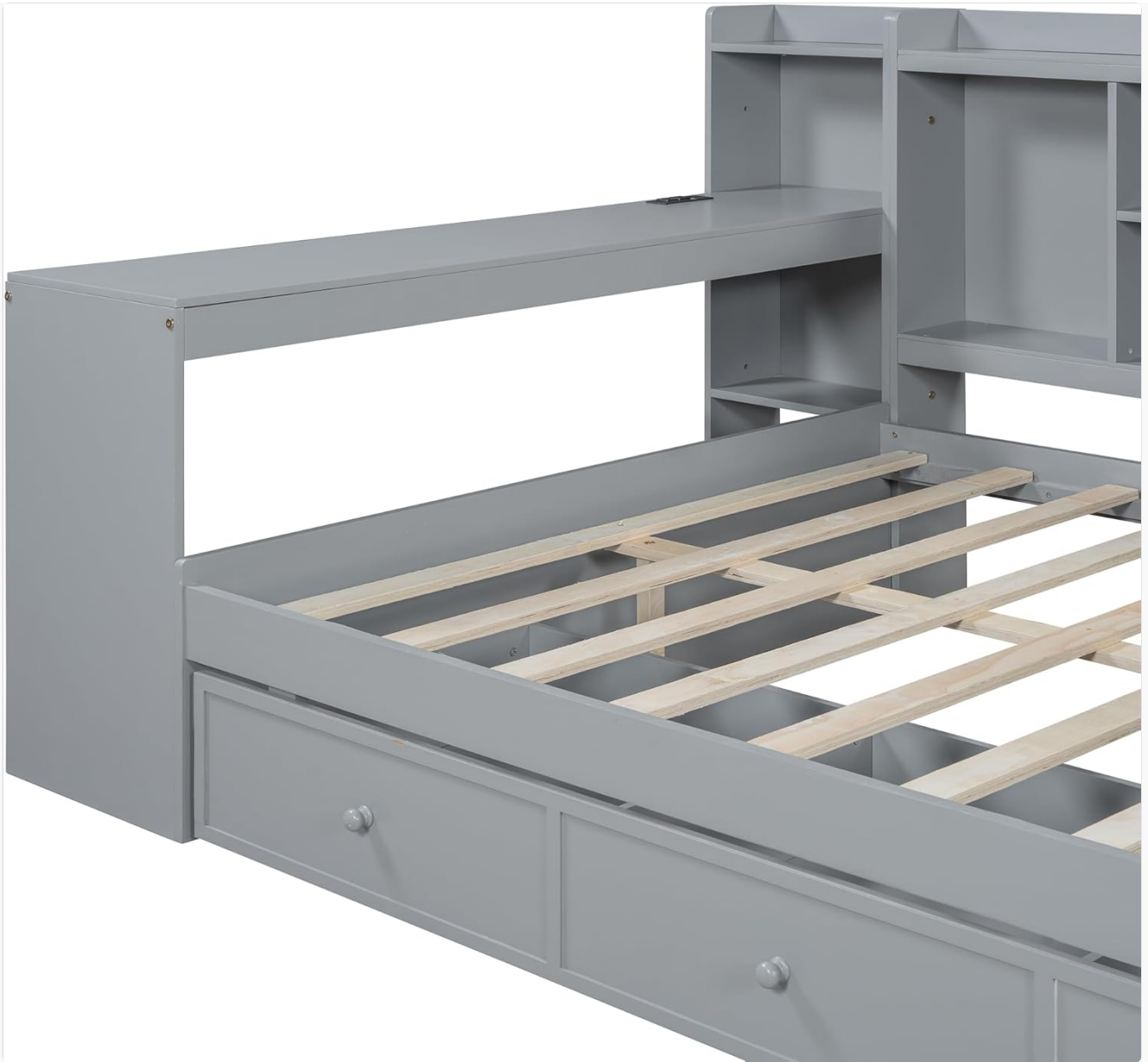


Image 5: A close-up view of the integrated desk, showing the USB ports and power outlets for convenient device charging.

Storage Shelves:

The headboard features multiple open compartments and a top surface for additional storage or display. These are suitable for books, decorative items, or small electronics.

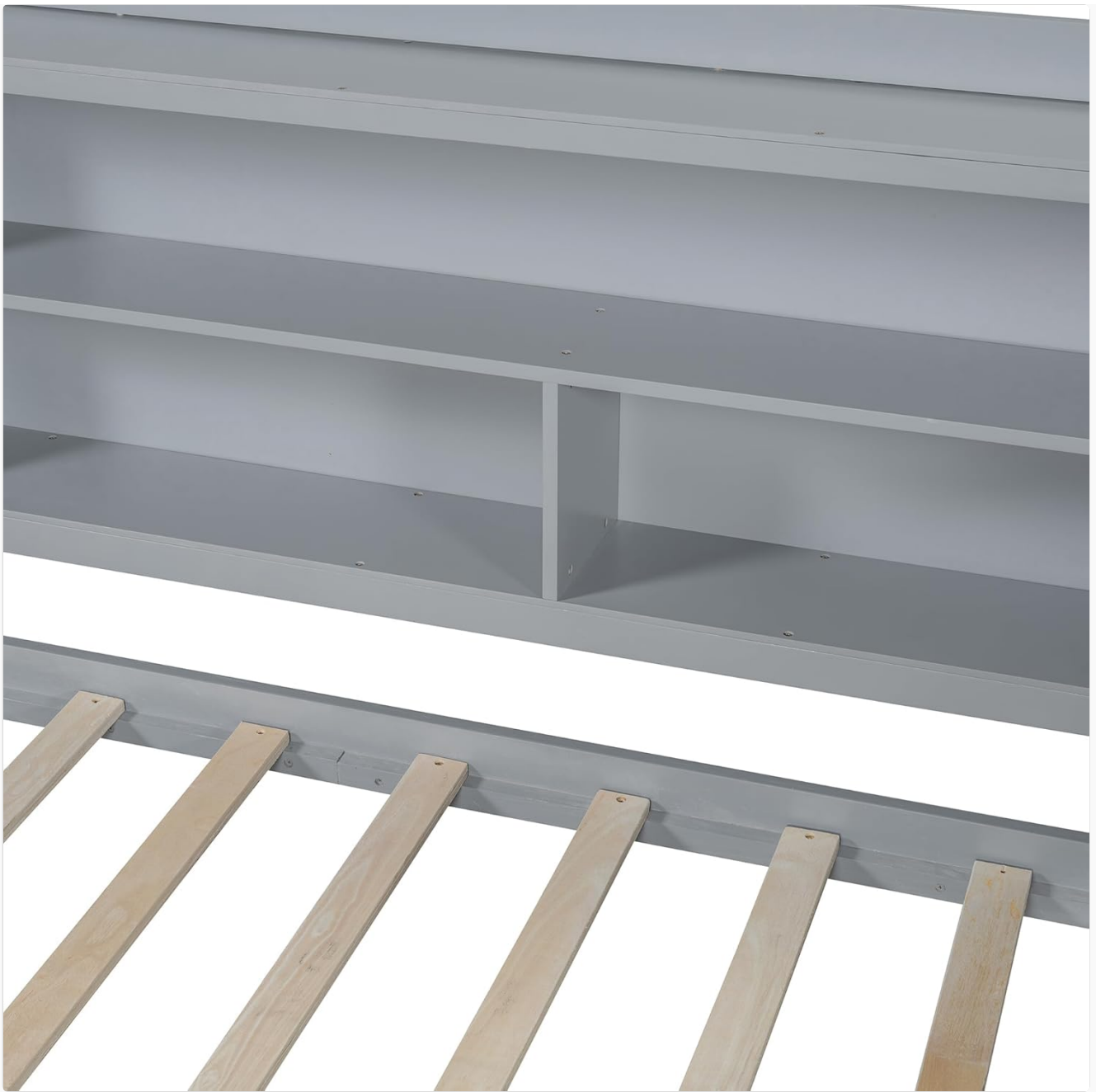


Image 6: Detail of the headboard's integrated shelving units, designed for organizing books and small items.



Image 7: The daybed in a room setting, showcasing the functional desk and accessible storage shelves.

MAINTENANCE AND CARE

- **Cleaning:** Wipe surfaces with a soft, damp cloth. Avoid harsh chemicals or abrasive cleaners, which can damage the finish.
- **Dusting:** Regularly dust the bed frame and shelves with a dry, soft cloth.
- **Hardware Check:** Periodically inspect all bolts and screws to ensure they remain tight. Re-tighten as necessary to maintain stability.
- **Avoid Moisture:** Protect the wood from excessive moisture and direct sunlight to prevent warping or fading.

TROUBLESHOOTING

Problem	Possible Cause	Solution
---------	----------------	----------

Problem	Possible Cause	Solution
Bed feels unstable or wobbly	Loose hardware (bolts, screws)	Check and tighten all assembly hardware. Ensure all connections are secure.
Drawers do not slide smoothly	Misaligned drawer slides or obstructions	Verify drawer assembly. Check for any objects blocking the drawer slides. Ensure the bed frame is on a level surface.
Integrated desk charging ports not working	Power cord not connected or faulty outlet	Ensure the desk's power cord is securely plugged into a functional wall outlet. Test the outlet with another device.
Missing parts during assembly	Packaging error or lost during transit	Review the parts list carefully. Contact customer support with the specific part numbers for assistance.
Crevice between bed and shelf	Design feature	This is a design characteristic. Consider using a bed rail or a mattress stopper if items frequently fall into this space.

PRODUCT SPECIFICATIONS

Feature	Detail
Product Type	Daybed
Size	Full
Color	Gray-m4
Overall Product Dimensions	92.1"L x 63.7"W x 42.5"H
Weight Capacity	450 lbs
Recommended Mattress Thickness	6-8 inches (Mattress not included)
Material	Plywood + MDF + Pinewood
Number of Slats	10
Number of Packages	2
Assembly Required	Yes
Special Features	Built-in desk with USB ports and power outlets, 3 storage drawers, headboard shelves
Item Weight	193 pounds

SIZE: INCH

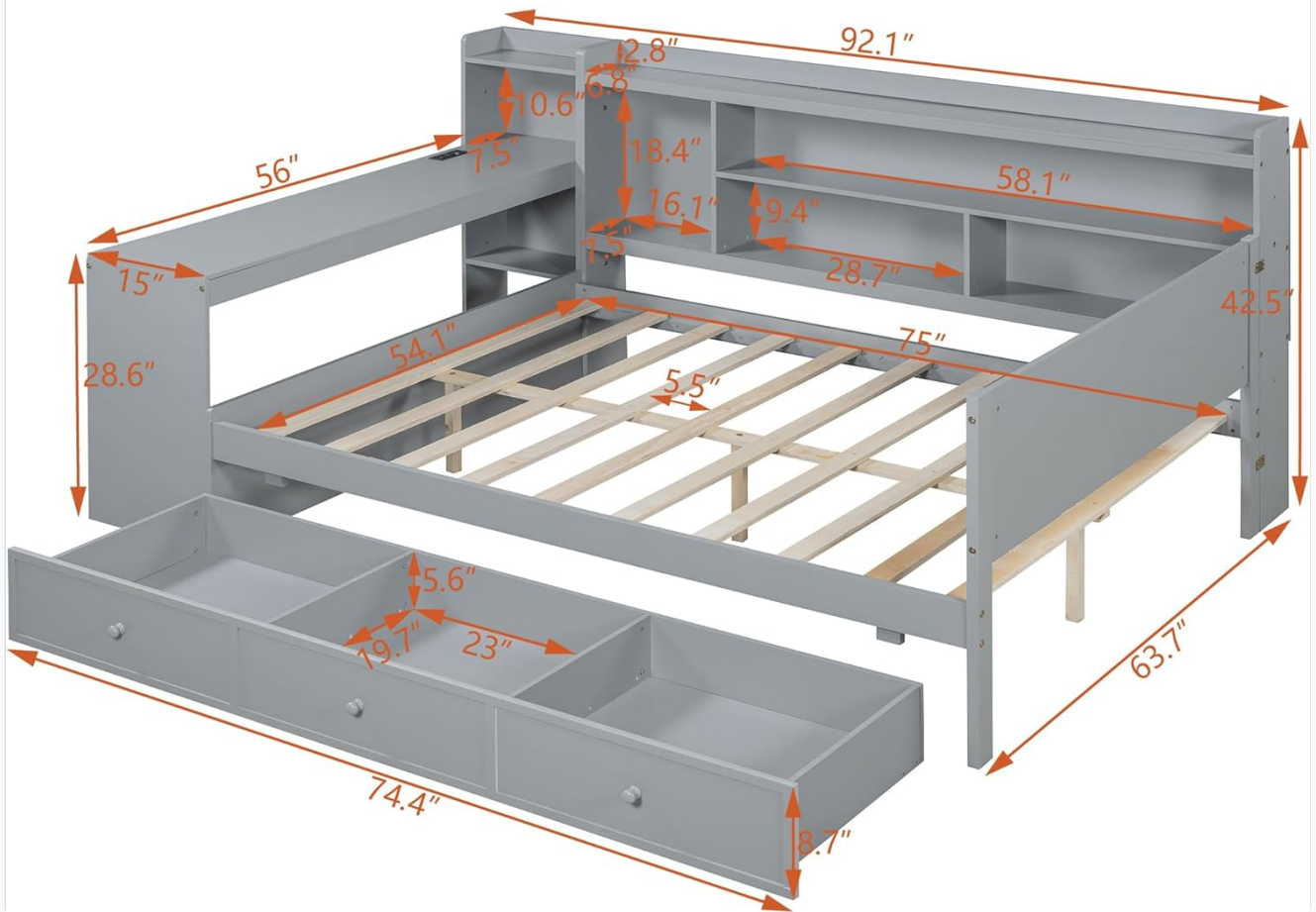


Image 8: Technical drawing illustrating the precise dimensions of the daybed, including the desk and storage areas.

WARRANTY INFORMATION

For specific warranty details regarding your VilroCaz product, please refer to the documentation included with your purchase or contact the seller directly. Warranty terms typically cover manufacturing defects and material flaws under normal use.

CUSTOMER SUPPORT

If you have any questions, require assistance with assembly, or need to report missing/damaged parts, please contact the seller or manufacturer directly. Refer to your purchase documentation for contact information.