



Manuals.plus /

› **Pebble Bee** /

› Pebblebee Tracker Card Universal Instruction Manual

## Pebble Bee Universal Card

# Pebblebee Tracker Card Universal Instruction Manual

Model: Universal Card

## 1. INTRODUCTION

The Pebblebee Tracker Card Universal is a versatile, rechargeable item tracker designed to help you locate your valuables. This slim device offers broad compatibility, working seamlessly with both Apple Find My and Google's Find Hub networks. It features a long-lasting rechargeable battery, bright LED indicators, and a loud sound alert to assist in finding misplaced items. This manual provides essential information for setting up, operating, maintaining, and troubleshooting your Pebblebee Tracker Card Universal.

## 2. PRODUCT OVERVIEW

The Pebblebee Tracker Card Universal is engineered for convenience and reliability. Its key features include:

- **Universal Compatibility:** Works with either Apple Find My or Google's Find Hub network. Note: Only one network can be used at a time.
- **Rechargeable Battery:** A single charge provides up to 18 months of battery life. A USB-C charger is included for easy recharging.
- **Audible and Visual Alerts:** Features a bright LED light for low-light conditions and a loud sound for nearby searching.
- **Slim Design:** Its credit card-like form factor allows it to fit easily into wallets, luggage, or passport holders.
- **Durable and Water-Resistant:** Rated IPX6 for water resistance, protecting against splashes and rain.
- **Phone Finder Function:** Double-press the card to make your paired smartphone ring, even if it's on silent.
- **Extended Bluetooth Range:** Connects via Bluetooth up to 500 feet (150 meters) in open spaces.

# Universal Peace Of Mind



Image 2.1: The Pebblebee Tracker Card Universal, illustrating its key features such as phone finding capability, eco-friendly rechargeable battery, slim design, and IPX6 water resistance.

## 3. SETUP INSTRUCTIONS

Follow these steps to set up your Pebblebee Tracker Card Universal:

1. **Charge the Device:** Before initial use, ensure your Pebblebee Card is fully charged using the included USB-C cable. The LED indicators will show charging status.
2. **Download the App:** Download either the Apple Find My app (for iOS devices) or the Google Find Hub app (for Android devices) from your device's app store.
3. **Activate the Card:** Press the button on the Pebblebee Card twice. A flashing blue light indicates it is in pairing mode.
4. **Pair with Your Device:**
  - **For Apple Find My:** Open the Find My app, navigate to the 'Items' tab, and tap 'Add Item'. Follow the on-screen instructions to connect your Pebblebee Card.
  - **For Google Find Hub:** Open the Find Hub app and follow the prompts to add a new device.

5. **Confirm Connection:** Once successfully paired, the app will confirm the connection, and the flashing blue light on the card will stop.
6. **Placement:** Insert the slim card into your wallet, luggage, backpack, or any item you wish to track.

**Important Note:** The Pebblebee Tracker Card Universal can only be connected to one network (Apple Find My or Google Find Hub) at a time. If you wish to switch networks, a full device reset will be required.

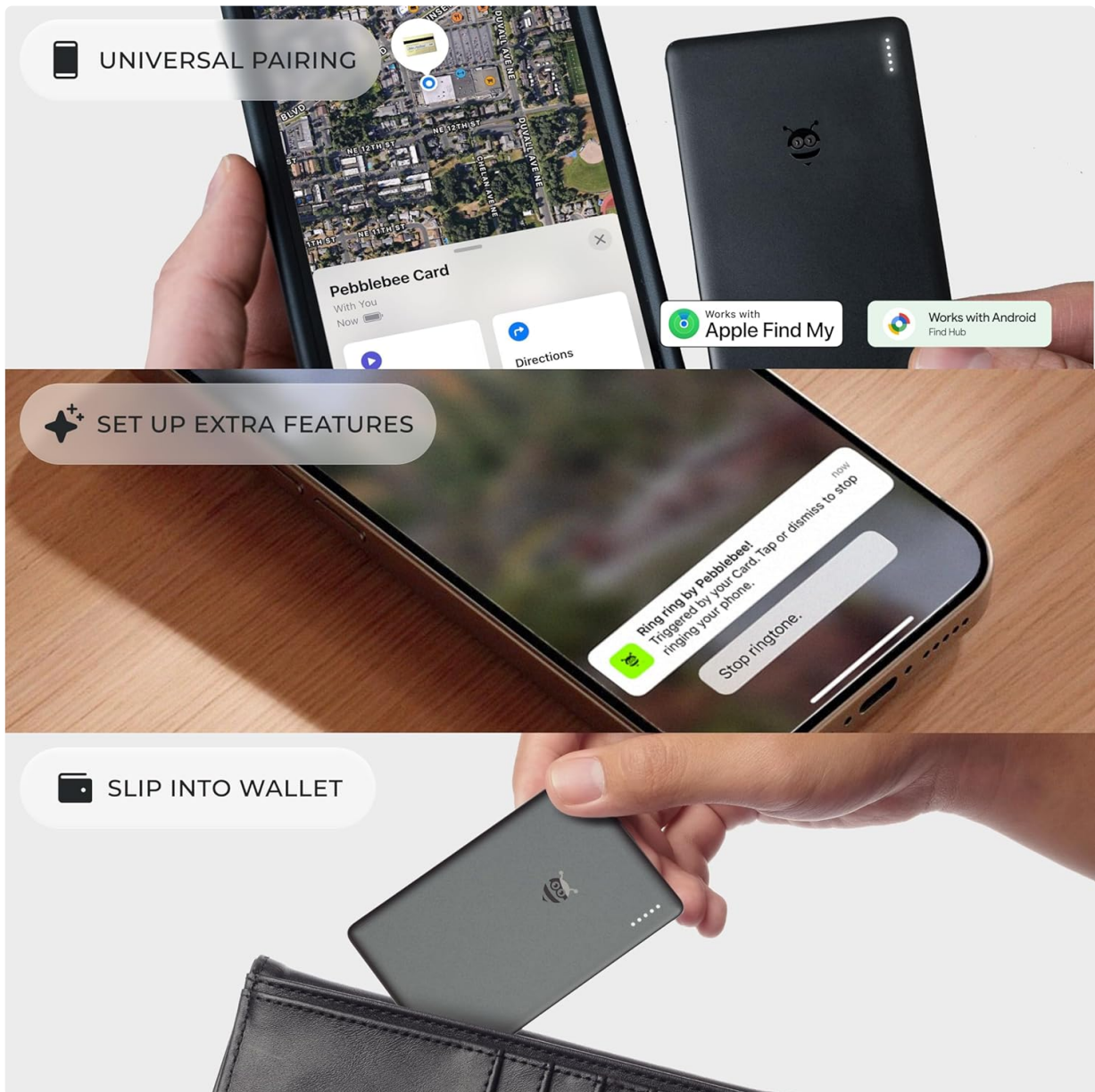


Image 3.1: Visual guide for universal pairing and placement of the Pebblebee Tracker Card Universal.

## 4. OPERATING INSTRUCTIONS

Utilize your Pebblebee Tracker Card Universal to keep track of your belongings:

### 4.1 Locating Items

- **Using the App:** Open the Apple Find My or Google Find Hub app on your paired device. Select your Pebblebee Card from the list of items. You can then view its last known location on a map.
- **Sound and LED Alerts:** If your item is nearby, you can trigger a loud sound and bright LED lights from the app to help pinpoint its exact location. The sound and lights will automatically turn off after a few minutes.

- **Voice Assistant:** Use Siri (for Apple Find My) or Google Assistant (for Google Find Hub) to trigger the sound on your Pebblebee Card by saying commands like "Hey Siri, find my wallet" or "Hey Google, ring my card."

## 4.2 Phone Finder

To locate your paired smartphone using the Pebblebee Card:

- **Double-Press the Card:** Double-press the button on your Pebblebee Card. Your smartphone will ring, even if it is set to silent mode.



Image 4.1: The Phone Finder feature in action, showing a notification on a smartphone.

## 5. MAINTENANCE

### 5.1 Charging the Battery

The Pebblebee Tracker Card Universal features a rechargeable Lithium Ion battery. To charge:

1. Connect the included USB-C cable to the charging port on the card.
2. Connect the other end of the USB-C cable to a compatible USB power adapter (not included).

3. The LED indicators on the card will illuminate to show charging status.
4. A full charge provides up to 18 months of use. Regular charging is recommended to ensure continuous tracking capability.

## 5.2 Cleaning and Care

- Wipe the device with a soft, dry cloth. Avoid using harsh chemicals or abrasive materials.
- The device is IPX6 water-resistant, meaning it can withstand strong jets of water. However, it is not designed for submersion. Avoid prolonged exposure to water.

## 6. TROUBLESHOOTING

---

If you encounter issues with your Pebblebee Tracker Card Universal, refer to the following common solutions:

- **Device Not Connecting/Pairing:**
  - Ensure the card is charged.
  - Confirm Bluetooth is enabled on your smartphone.
  - Make sure you are within Bluetooth range (up to 500 feet in open spaces).
  - Try resetting the device: Press the button three times quickly, then press and hold it for approximately 10 seconds. The device will beep three times; release the button during the third beep. Then attempt pairing again.
  - If experiencing issues with one phone, try pairing with another compatible device to rule out phone-specific issues.
- **Inaccurate Location Tracking:**
  - Location accuracy depends on the density of devices within the Apple Find My or Google Find Hub network. In less populated areas, updates may be less frequent.
  - Ensure your smartphone's location services are enabled for the tracking app.
- **Sound/LED Not Activating or Stopping:**
  - Verify the card is within Bluetooth range of your paired device.
  - The sound and LED alerts are designed to turn off automatically after a short period.
- **Battery Life Shorter Than Expected:**
  - Frequent use of sound/LED alerts or being consistently out of range may slightly reduce battery life.
  - Ensure the device is fully charged before each use cycle.

## 7. SPECIFICATIONS

---

Feature	Detail
Model Number	Universal Card
Dimensions	4.21 x 3.78 x 0.55 inches (10.69 x 9.60 x 1.40 cm)
Item Weight	1.44 ounces (0.04 Kilograms)
Battery Type	1 Lithium Ion battery (rechargeable)
Battery Life	Up to 18 months per charge
Connectivity	Bluetooth
Water Resistance	IPX6
Compatible Devices	Smartphones (iOS and Android)



Image 7.1: Physical dimensions of the Pebblebee Tracker Card Universal.

## 8. WARRANTY INFORMATION

Specific warranty details for the Pebblebee Tracker Card Universal are typically provided at the point of purchase or on the manufacturer's official website. Please refer to your product packaging or the Pebble Bee website for the most current warranty terms and conditions.

## 9. SUPPORT AND CONTACT

---

For further assistance, technical support, or to view frequently asked questions, please visit the official Pebble Bee store or support page:

**Visit the Pebble Bee Official Store**

Pebble Bee is committed to user privacy. Your tracking information is not accessed by Pebble Bee and will not be sold.