

[Manuals.plus](#) /

> [maylit](#) /

> maylit Rechargeable Motion Sensor Ceiling Lights User Manual

maylit Ceiling Lights-S

maylit Rechargeable Motion Sensor Ceiling Lights User Manual

Model: Ceiling Lights-S

1. INTRODUCTION

Thank you for choosing the maylit Rechargeable Motion Sensor Ceiling Lights. This product is designed to provide convenient, wireless illumination with adjustable brightness and color temperature, featuring intelligent motion sensing capabilities. Please read this manual thoroughly before use to ensure proper installation and operation.

2. SAFETY INFORMATION

- Do not disassemble, repair, or modify the product. Unauthorized modifications may cause damage or injury.
- Keep the product away from water and high humidity environments. This product is not water resistant.
- Do not expose the product to extreme temperatures or direct sunlight for prolonged periods.
- Use only the provided USB charging cables for recharging.
- Ensure the installation surface is clean and dry before applying adhesive tapes or mounting with screws.

3. PACKAGE CONTENTS

Please verify that all items are present in your package:

- 2 x Rechargeable Ceiling Lights
- 2 x USB Charging Cables
- 2 x Remotes
- 2 x Metal Sheets
- 4 x Double-sided Adhesive Tapes
- 4 x Screws
- 1 x Instruction Manual



Image 3.1: Package Contents Overview. This image displays the two rechargeable ceiling lights, two remote controls, and two USB charging cables included in the product package.

4. PRODUCT OVERVIEW

The maylit ceiling light features a slim design (0.5 inches thick, 8 inches square) and integrates a motion sensor, light sensor, and rechargeable battery. The included remote control allows for easy adjustment of settings.

4.1 Remote Control Functions

All-in-one Remote Control

0.5inch



8inch

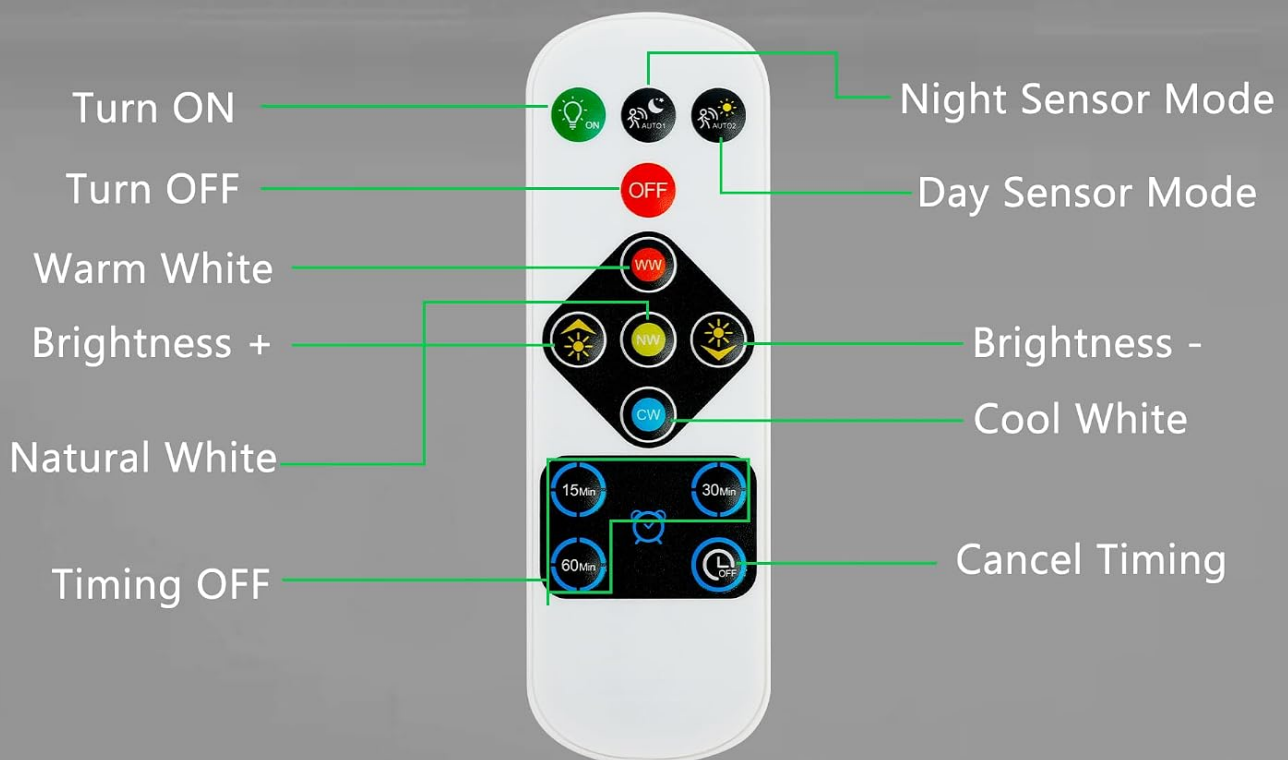


Image 4.1: Remote Control Layout. This image illustrates the various buttons on the remote control, including power, sensor modes, brightness, color temperature, and timer settings.

- **ON:** Turns the light on.
- **OFF:** Turns the light off.
- **Night Sensor Mode:** Activates motion sensor only in low light conditions.
- **Day Sensor Mode:** Activates motion sensor in all light conditions.
- **Warm White (WW):** Sets color temperature to warm white (3000K).
- **Natural White:** Sets color temperature to natural white (4000K).
- **Cool White (CW):** Sets color temperature to cool white (6500K).
- **Brightness + / -:** Adjusts light brightness.
- **15min / 30min / 60min:** Sets auto-off timer for continuous illumination mode.
- **Cancel Timing:** Disables the auto-off timer.

5. SETUP

5.1 Charging the Light

Before first use, fully charge the ceiling light. The light is powered by a 4200mAh rechargeable battery.

1. Connect the provided USB charging cable to the charging port on the light.
2. Connect the other end of the USB cable to a standard USB power adapter (not included).
3. The charging indicator light will be **red** while charging.
4. Once fully charged (approximately 5-6 hours), the indicator light will turn **green**.



Image 5.1: Charging Process. This image demonstrates how to connect the USB charging cable to the light and indicates the color of the charging status light (red for charging, green for fully charged).

5.2 Installation

The maylit ceiling light offers cordless installation using either magnetic attraction or adhesive tapes/screws.

1. **Magnetic Attraction:** The light has built-in magnets. For metal surfaces, simply attach the light directly.

2. **Adhesive/Screw Installation:** For non-metal surfaces, use the provided metal sheets.

- **Step 1:** Place the metal sheet on the desired installation spot.
- **Step 2:** Peel off the protective film from the double-sided adhesive tape and apply it to the metal sheet.
- **Step 3:** Paste the metal sheet firmly onto the clean, dry surface. Alternatively, use the provided screws to secure the metal sheet.
- **Step 4:** Attach the ceiling light to the metal sheet using its magnetic base.

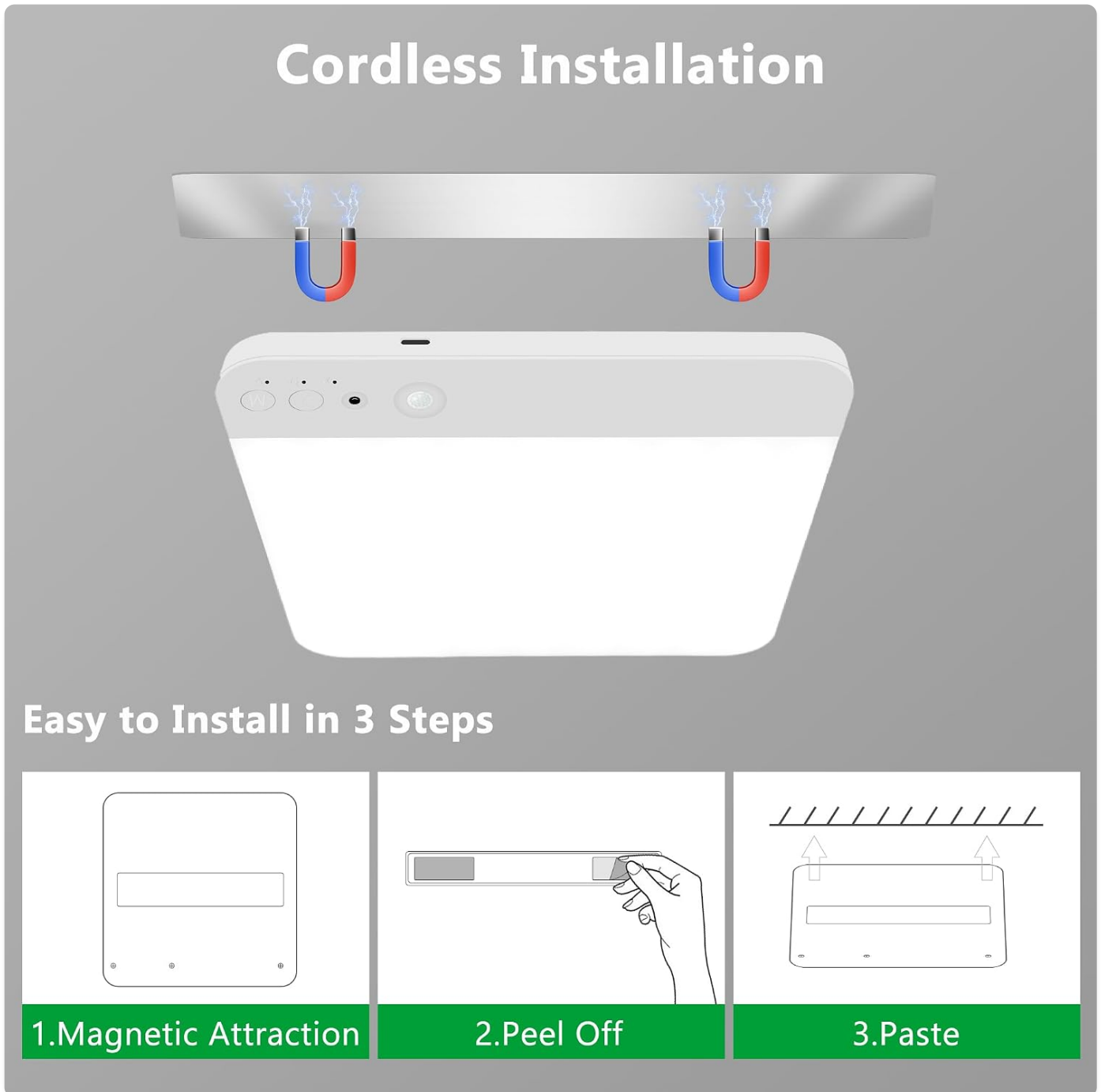


Image 5.2: Cordless Installation Steps. This diagram illustrates the simple three-step process for installing the light using the magnetic attraction and adhesive metal sheets.

6. OPERATING INSTRUCTIONS

6.1 Adjusting Color Temperature and Brightness

Use the remote control to customize the light output:

- Press **WW** for Warm White (3000K).

- Press **Natural White** for Natural White (4000K).
- Press **CW** for Cool White (6500K).
- Use **Brightness +** or **Brightness -** buttons to adjust the light intensity from 10% to 100%.

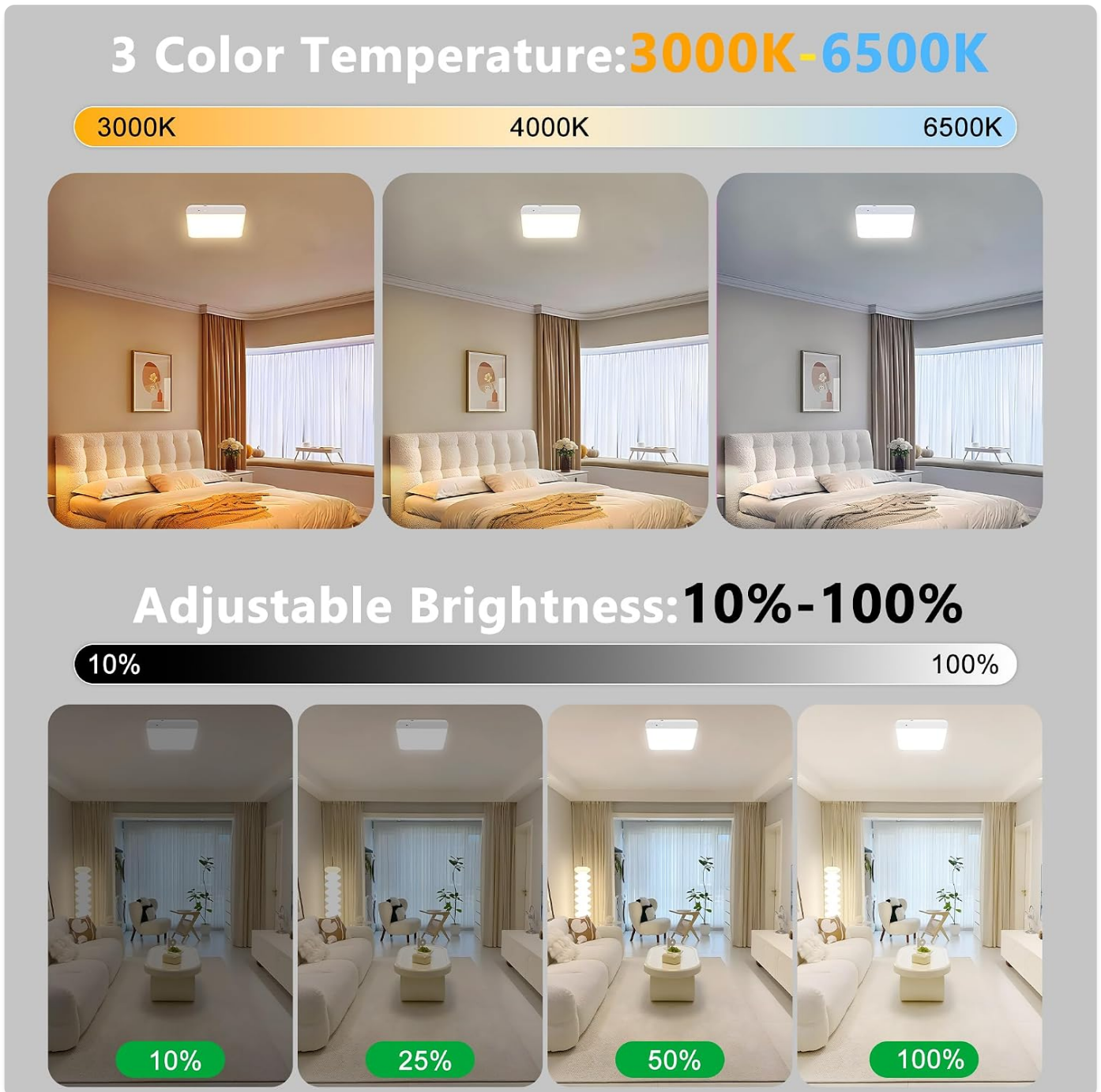


Image 6.1: Color Temperature and Brightness Adjustment. This image visually represents the different color temperatures (warm, natural, cool white) and brightness levels achievable with the light.

6.2 Motion Sensor Modes

The light features two motion sensor modes and a continuous ON mode:

- **Day Sensor Mode:** The light will detect motion within a 120° range and up to 20 feet, turning on for 20 seconds regardless of ambient light conditions.
- **Night Sensor Mode:** The light will only activate upon motion detection when the ambient light is low, conserving battery life.
- **ON Mode:** The light will remain continuously illuminated until manually turned off or a timer is set.

Motion Sensor Light

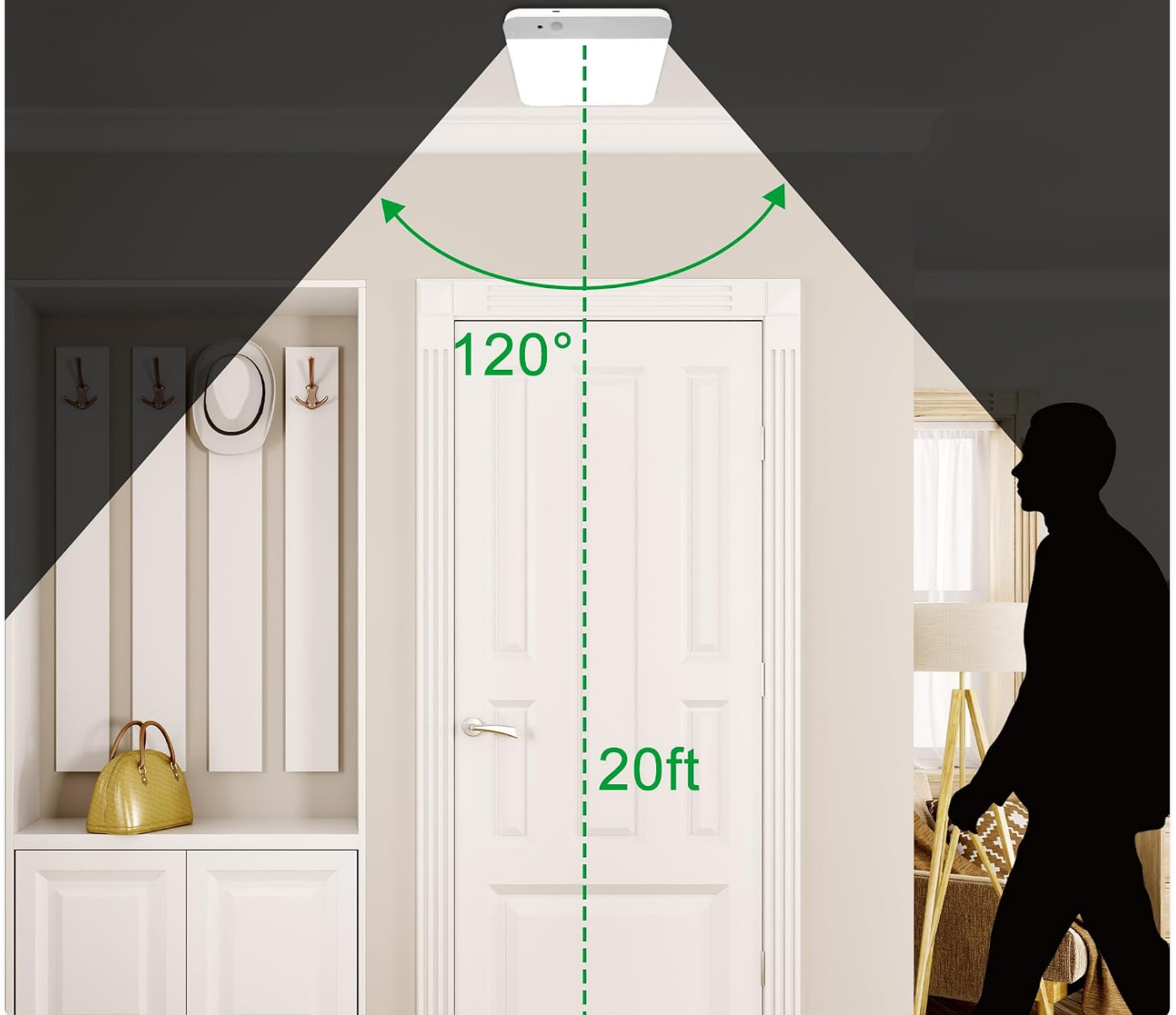


Image 6.2: Motion Sensor Detection. This image illustrates the 120-degree detection angle and 20-foot range of the integrated motion sensor.

6.3 Timer Function

In continuous ON mode, you can set the light to automatically shut off after a specified duration:

- Press **15min**, **30min**, or **60min** on the remote to set the auto-off timer.
- Press **Cancel Timing** to disable the timer function.

7. MAINTENANCE

7.1 Cleaning

To clean the light, gently wipe the surface with a soft, dry cloth. Do not use abrasive cleaners or solvents.

7.2 Battery Care

- Recharge the battery when the light output diminishes or the charging indicator signals low battery.

- Avoid completely draining the battery frequently to prolong its lifespan.
- If storing the light for an extended period, charge it to approximately 50% every 3-6 months.

8. TROUBLESHOOTING

Problem	Possible Cause	Solution
Light does not turn on.	Battery is depleted.	Recharge the light fully.
	Light is in the wrong sensor mode for current ambient light.	Switch to Day Sensor Mode or ON Mode.
Motion sensor not working.	Obstruction in sensor's path.	Ensure clear line of sight for the sensor.
	Sensor mode is incorrect (e.g., Night Sensor in bright room).	Adjust sensor mode via remote.
Remote control not responding.	Remote battery is low or depleted.	Replace remote battery (if applicable, check manual for type).
	Obstruction between remote and light.	Ensure clear path; point remote directly at light.
Battery life is shorter than expected.	Frequent activation in motion sensor mode or continuous ON mode.	Optimize sensor mode for usage area (e.g., Night Sensor for less traffic). Ensure full charge before use.

9. SPECIFICATIONS

Feature	Detail
Brand	maylit
Model Name	2 Pack Ceiling Lights Rechargeable
Item Model Number	Ceiling Lights-S
Color	White
Material	Plastic (Acrylonitrile Butadiene Styrene)
Product Dimensions	8"L x 8"W x 0.5"H
Item Weight	2.12 pounds (for 2 lights)
Power Source	Battery Powered
Battery Capacity	4200mAh (Rechargeable)
Charging Time	Approx. 5-6 hours
Battery Life (Motion Sensor Mode)	Up to 1 month (30-90 days)

Feature	Detail
Battery Life (Continuous ON Mode)	Up to 10 hours
Brightness	250 Lumen
Wattage	2.5 watts
Voltage	5 Volts (DC)
Light Source Type	LED
Number of Light Sources	386
Color Temperature	Warm White, Natural White, Cool White (Adjustable)
Control Method	Remote, Touch
Motion Sensor Range	120° detection angle, 3-20ft range
Installation Type	Magnetic or Adhesive
Indoor/Outdoor Usage	Indoor
Water Resistance Level	Not Water Resistant

10. WARRANTY

This maylit product comes with a **2-Year Warranty** from the date of purchase. This warranty covers manufacturing defects and issues arising from normal use. It does not cover damage caused by misuse, accidents, unauthorized modifications, or improper installation.

11. CUSTOMER SUPPORT

For any questions, concerns, or technical assistance, please contact maylit customer support. Refer to your purchase documentation or the seller's information for contact details.