

Manuals+

[Q & A](#) | [Deep Search](#) | [Upload](#)

manuals.plus /

› [BANIGIPA](#) /

› [BANIGIPA A2 Open Ear Headphones User Manual](#)

BANIGIPA A2

BANIGIPA A2 Open Ear Headphones User Manual

Model: A2 | Brand: BANIGIPA

1. INTRODUCTION

Thank you for choosing the BANIGIPA A2 Open Ear Headphones. These headphones are designed to provide a comfortable and immersive audio experience while keeping you aware of your surroundings. Featuring Bluetooth 5.4, a detachable boom microphone with DSP noise cancellation, and a lightweight, waterproof design, the A2 headphones are ideal for various activities including working, exercising, and daily use.

2. WHAT'S IN THE BOX

- 1 x A2 Open Ear Wireless Earbuds
- 1 x USB-C Charging Cable
- 1 x User Manual
- 1 x Detachable Microphone Boom



Figure 2.1: BANIGIPA A2 Open Ear Headphones, detachable boom mic, and charging case.

3. PRODUCT OVERVIEW

3.1 Design and Comfort

The A2 headphones feature an open-ear design that rests comfortably around your ears without entering the ear canal. This ergonomic design ensures a secure fit for extended wear and allows you to remain aware of your surroundings. Each earbud weighs only 10g, making them extremely lightweight.

Dual LED Digital Display

10_H

Single Charge

600

Charging mAh Case

1.5_H

Charging Time



USB-Type C



Digital Power
Display of Earbuds



Digital Power
Display of Case



Figure 3.1: The open-ear design provides comfort and situational awareness during activities.

3.2 Microphone and Noise Cancellation

Equipped with a detachable magnetic microphone boom, the A2 headphones offer enhanced call quality. The microphone can be rotated 360° and attached to either the left or right earbud for user preference. The DSP noise-canceling algorithm filters out up to 95% of background noise during calls, ensuring clear communication. A mute function is also available for privacy during calls.

Detachable Boom Mic for Both Ears

Easy to install microphone booms to left and right ears earbuds.



Figure 3.2: Detachable and 360° rotatable boom microphone for flexible use.

3.3 Charging Case and Battery Life

The included charging case features dual LED digital displays to show the real-time power levels of both the earbuds and the case. Each earbud provides up to 10 hours of playtime on a single charge. The 600 mAh charging case offers 2-3 full charges for both earbuds, extending total playtime significantly.

Connect Two Devices Simultaneously

Bluetooth 5.4 headset allows you to connect two devices at the same time without missing any calls!



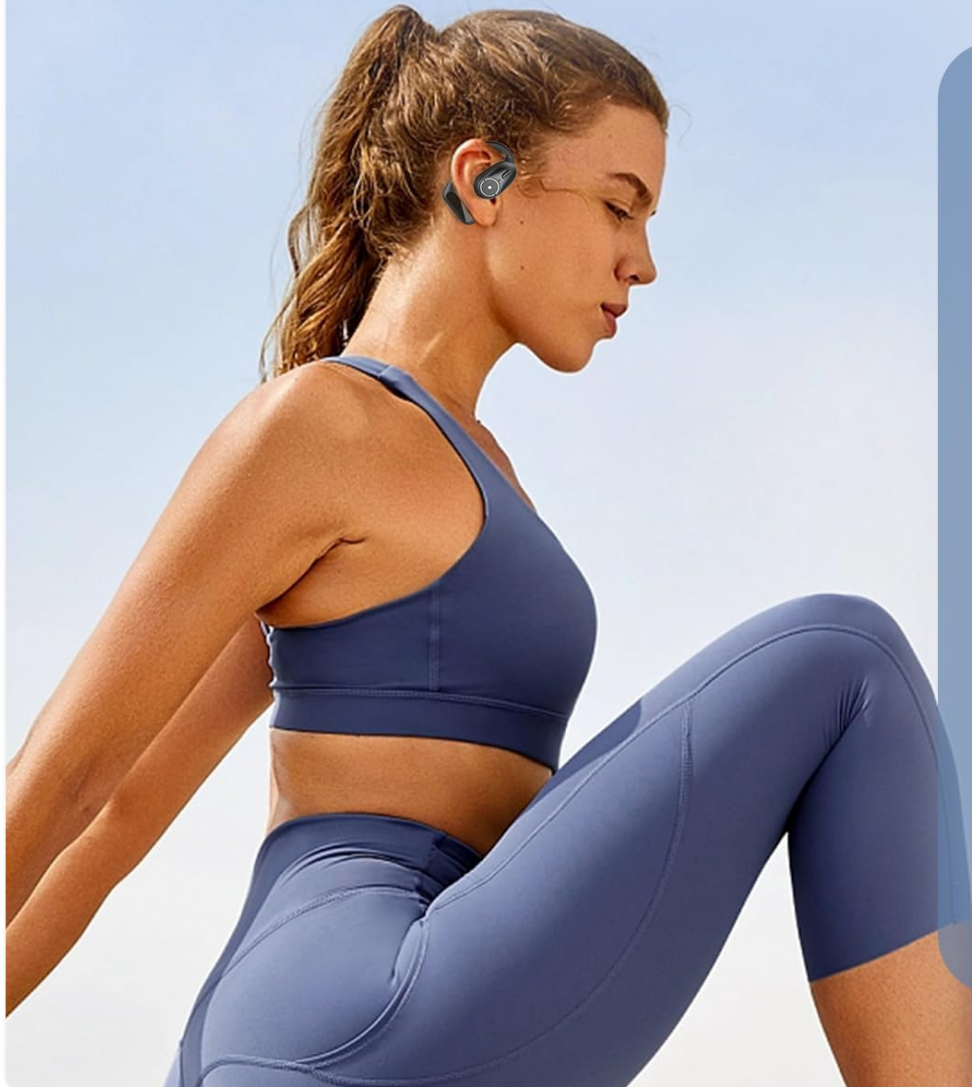
Figure 3.3: Charging case with digital display for battery status.

3.4 Connectivity and Compatibility

Utilizing advanced Bluetooth 5.4 technology, the A2 headphones ensure a stable and fast connection. They support dual device connection, allowing you to connect to two devices simultaneously (e.g., phone and laptop) without missing calls. They are widely compatible with Bluetooth-enabled phones, laptops, tablets, computers, and smartwatches.

Extremely Lightweight and Comfortable

Ergonomically designed for long time wear without ear pain.



Open-ear Design



0.38oz Lightweight



IP54 Waterproof

Figure 3.4: Dual device connection capability.

3.5 Water Resistance

The headphones are IP54 waterproof, providing protection against sweat and dust. This makes them suitable for various activities such as fitness, workouts, hiking, cycling, running, and yoga.

4. SETUP

4.1 Wearing the Headphones

1. Put the ear hook over the back of your ear.
2. Install the magnetic microphone boom (optional).
3. Adjust the ear hooks and boom mic to the best position for comfort and sound.



Figure 4.1: Proper wearing of the BANIGIPA A2 headphones.

4.2 Initial Pairing

1. Ensure the charging case has sufficient power.
2. Open the charging case. The earbuds will automatically enter pairing mode.
3. On your device (smartphone, tablet, PC), enable Bluetooth.
4. Search for "A2" in the list of available Bluetooth devices.
5. Select "A2" to connect. A voice prompt will confirm successful pairing.

4.3 Dual Device Connection

To connect to a second device, disconnect the headphones from the first device. The headphones will re-enter pairing mode. Connect to the second device. Then, manually select "A2" from the Bluetooth list on the first device to establish a dual connection.

5. OPERATING INSTRUCTIONS

5.1 Button Functions

The A2 headphones feature multi-functional buttons on each earbud for easy control. The functions are typically mirrored on both left and right earbuds unless specified.

Function	Action
Answer/Reject/Hang Up Call	Short press R/L
Mute On/Off	Double-click MFB
Voice Assistant	Three click R/L
Play/Pause	One click R/L
Previous Song	Double-click L
Next Song	Double-click L
Volume +	Long press R
Volume -	Long press L



Figure 5.1: Overview of multi-function button controls.

5.2 Power On/Off

- **Automatic:** The earbuds power on automatically when removed from the charging case and power off when placed back into the case.
- **Manual:** To manually power on/off, press and hold the multi-function button on each earbud for approximately 3-5 seconds until you hear a voice prompt.

6. MAINTENANCE

- Clean the earbuds and charging case regularly with a soft, dry cloth.
- Avoid exposing the headphones to extreme temperatures or direct sunlight for prolonged periods.
- Ensure the charging port is dry before charging to prevent damage.
- Store the headphones in their charging case when not in use to protect them and maintain battery life.

7. TROUBLESHOOTING

- **Headphones not pairing:** Ensure both earbuds are charged and removed from the case. Turn off Bluetooth on other nearby devices. Try resetting the headphones (refer to user manual for specific reset steps).
- **One earbud not working:** Place both earbuds back into the charging case, close the lid, and then reopen it. Ensure both earbuds are fully charged.
- **Poor call quality:** Ensure the detachable boom mic is securely attached and positioned correctly. Check for excessive background noise.
- **Disconnection issues with PC:** Some built-in PC Bluetooth modules may have compatibility issues. It is recommended to use a third-party USB Bluetooth dongle for PC if issues persist.
- **Low volume:** Adjust the volume on both the headphones and your connected device.

For more detailed troubleshooting, please refer to the [Troubleshooting Guide \(PDF\)](#).

8. SPECIFICATIONS

Feature	Detail
Model Name	A2
Connectivity Technology	Wireless (Bluetooth 5.4)
Ear Placement	Open Ear
Water Resistance Level	IP54 Waterproof
Item Weight (per earbud)	10 Grams (0.353 ounces)
Audio Driver Size	15.4 Millimeters (Dynamic Driver)
Frequency Range	20 Hz - 20,000 Hz
Charging Case Battery Capacity	600 Milliamp Hours
Charging Time	2 Hours (for case)
Single Charge Playtime	Up to 10 Hours
Control Type	Button Control
Compatible Devices	Bluetooth devices (Phones, PC, Laptop, Tablet, Nintendo Switch, etc.)

9. WARRANTY AND SUPPORT

For warranty information and technical support, please refer to the official BANIGIPA website or contact their customer service directly. You can also find additional resources, including a detailed [User Manual \(PDF\)](#) and [Troubleshooting Guide \(PDF\)](#), through the provided links.



