

## Jocoevol 0818 Fluted dresser

# Jocoevol White 6-Drawer Dresser Instruction Manual

Model: 0818 Fluted dresser

## 1. IMPORTANT SAFETY INFORMATION

---

Please read and understand all instructions before assembly and use. Keep this manual for future reference.

- **Anti-Tip Kit:** This dresser includes an anti-tip kit. It is crucial to install this kit to prevent the dresser from tipping over, especially in households with children. Failure to do so can result in serious injury or death.
- **Weight Capacity:** Do not overload drawers or the top surface. Refer to the specifications section for maximum weight capacities.
- **Assembly:** Assembly should be performed by at least two adults. Ensure all hardware is securely tightened before use.
- **Placement:** Place the dresser on a level, stable surface. Avoid placing it near heat sources or in direct sunlight to prevent material damage.

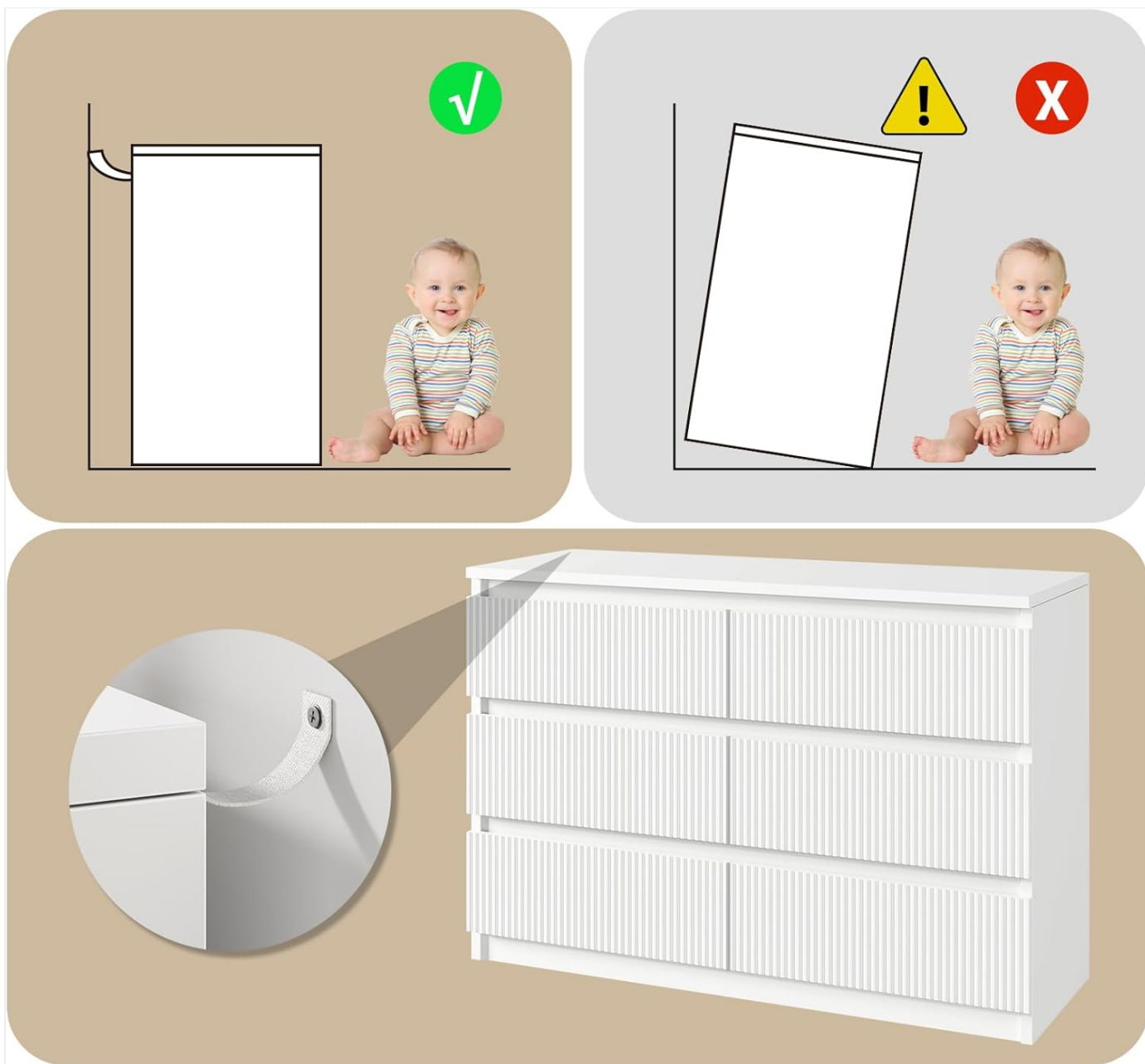


Figure 1: Anti-tip kit installation is essential for safety. The image shows a green checkmark for a properly secured dresser and a red cross for an unsecured, tipping dresser, with a child in both scenarios.

## 2. PACKAGE CONTENTS

Before beginning assembly, verify that all parts and hardware are present and undamaged. If any parts are missing or damaged, contact Jocoevol customer service immediately.

Item	Description	Quantity
Dresser Panels	Side panels, top panel, bottom panel, back panel, drawer panels	Varies
Drawers	6 complete drawer units	6
Hardware Kit	Screws, dowels, cam locks, drawer slides, anti-tip kit, etc.	1 set
Assembly Manual	Detailed step-by-step instructions	1

## 3. SETUP AND ASSEMBLY

Assembly is required for this Jocoevol 6-drawer dresser. It is recommended that two adults perform the assembly. All parts and accessories are labeled with numbers for easy identification. Follow the detailed instructions provided in the separate assembly manual included with your product.

### 3.1 Tools Required (Not Included)

- Phillips Head Screwdriver
- Hammer (optional, for dowels)

### 3.2 Assembly Steps Overview

1. Unpack all components and lay them out on a clean, soft surface (e.g., a blanket or carpet) to prevent scratches.
2. Identify each part using the labels and the assembly manual.
3. Assemble the main frame of the dresser according to the step-by-step diagrams.
4. Install the drawer slides onto the dresser frame.
5. Assemble each of the six drawers individually.
6. Install the drawer slides onto the assembled drawers.
7. Insert the assembled drawers into the dresser frame.
8. Attach the back panel to the dresser frame.
9. **Crucially, install the anti-tip kit to a wall stud using appropriate hardware (not always included, check kit contents).**

For detailed, step-by-step instructions with illustrations, please refer to the dedicated assembly manual provided in the product packaging.

## 4. OPERATING (USAGE)

---

The Jocoevol 6-drawer dresser is designed for versatile storage in various rooms of your home.

### 4.1 Drawer Usage

- The six deep drawers are equipped with high-quality metal slides for smooth and quiet operation.
- To open a drawer, gently pull it outwards. To close, push it inwards until it is fully seated.
- Organize items within the drawers to maximize space and maintain tidiness.
- Avoid forcing drawers open or closed if they feel stuck; check for obstructions.

# 6-DRAWER DRESSER

Meet Your Storage Needs

## Ample Storage Space



30+



20+



60+



12+



20+



40+

Figure 2: The dresser offers ample storage space for various items, including clothing, socks, and accessories.

## 4.2 Placement and Functionality

This dresser's modern design allows it to blend seamlessly into different environments:

- **Bedroom:** Ideal for storing clothing, linens, and personal items.
- **Living Room:** Can serve as a stylish storage cabinet for media, books, or decorative items. The top surface is suitable for lamps, photos, or plants.
- **Hallway/Entryway:** Perfect for organizing everyday essentials like keys, mail, or overflow items.



*Figure 3: The Jocoevol dresser complements various room decors, providing both storage and a display surface.*





*Figure 4: The dresser is suitable for use in hallways or entryways, offering convenient storage.*

## 5. MAINTENANCE

---

Proper care and maintenance will ensure the longevity and appearance of your Jocoevol dresser.

- **Cleaning:** Wipe surfaces with a soft, damp cloth. Avoid harsh chemicals, abrasive cleaners, or polishes that may damage the finish. The wood grain finish is waterproof and easy to clean.
- **Spills:** Immediately wipe up any spills to prevent staining or water damage.
- **Sunlight:** Avoid prolonged exposure to direct sunlight, which can cause fading or discoloration.
- **Heat:** Do not place hot items directly on the surface. Use coasters or protective pads.
- **Hardware:** Periodically check all screws and fasteners to ensure they remain tight. Retighten if necessary.
- **Drawer Slides:** If drawers become stiff, a small amount of silicone-based lubricant can be applied to the metal slides.



Figure 5: The dresser features a durable wood grain finish that is easy to clean and maintain.

## 6. TROUBLESHOOTING

If you encounter any issues with your dresser, refer to the following common problems and solutions:

Problem	Possible Cause	Solution
Drawers do not slide smoothly.	Misaligned slides, debris in tracks, loose screws.	Check that drawer slides are properly aligned and securely fastened. Clean tracks of any debris. Apply silicone lubricant if needed.
Dresser feels wobbly or unstable.	Loose hardware, uneven floor, anti-tip kit not installed.	Ensure all assembly hardware is tightened. Place dresser on a level surface or use shims if necessary. <b>Install the anti-tip kit immediately.</b>
Missing parts during assembly.	Packaging error.	Carefully check all packaging materials. If still missing, contact Jocoevol customer service with your purchase details.

Problem	Possible Cause	Solution
Damage to panels.	Shipping damage, assembly error.	If damaged upon arrival, contact Jocoevol customer service immediately. For minor scratches, touch-up pens may be available.

If the problem persists after attempting these solutions, please contact Jocoevol customer support for further assistance.

## 7. SPECIFICATIONS

---

Attribute	Detail
Model Name	Drawer Dresser
Model Number	0818 Fluted dresser
Brand	Jocoevol
Dimensions (L x W x H)	120.14 cm x 39.88 cm x 80.26 cm (47.3" L x 15.7" W x 31.6" H)
Weight	38.56 kg (85 lbs)
Material	Engineered Wood, Metal
Number of Drawers	6
Drawer Dimensions (L x W x H)	57.15 cm x 30.99 cm x 21.59 cm (22.5" L x 12.2" W x 8.5" H)
Color	White
Assembly Required	Yes
Special Features	Fluted design, deep drawers, smooth metal glides, anti-tip kit included, scratch-resistant, waterproof finish.





Figure 6: Detailed dimensions of the Jocoevol 6-drawer dresser and its individual drawers.

## 8. WARRANTY AND SUPPORT

Jocoevol is committed to providing excellent service. While specific warranty details are not provided in this manual, please retain your proof of purchase for any warranty claims.

### 8.1 Customer Support

If you have any questions, concerns, or require assistance with your Jocoevol dresser, please do not hesitate to contact our customer service team. We aim to respond to all inquiries within 24 hours.

- **Email:** Refer to your product packaging or purchase documentation for the specific customer service email address.
- **Online:** Visit the official Jocoevol website for support resources and contact forms.

When contacting support, please provide your model number (0818 Fluted dresser) and ASIN (B0DHXM6NRX) to help us assist you more efficiently.

