

Lepro P1

Lepro P1 Smart Plug Mini 15A User Manual

Model: P1

1. INTRODUCTION

The Lepro P1 Smart Plug Mini 15A is designed to transform your traditional electrical outlets into smart, controllable power sources. This device allows you to manage connected appliances remotely via a mobile application, voice commands through compatible smart assistants like Amazon Alexa and Google Assistant, and set automated schedules. Its compact design ensures it does not obstruct adjacent outlets, making it suitable for various home environments.

2. SAFETY INFORMATION

Please read and understand all safety instructions before using the Lepro P1 Smart Plug. Failure to follow these instructions may result in electric shock, fire, or other hazards.

- **UL & FCC Certified:** This product is certified for safety and compliance with North American standards.
- **Fire-Resistant Casing:** Constructed with flame-retardant materials for enhanced safety.
- **Overload Protection:** Automatically cuts power to prevent damage from excessive current.
- **Short-Circuit Protection:** Safeguards against electrical shorts.
- **Physical Safety Lock (Child Proof Design):** Prevents accidental operation by children. This feature can be activated via the Lepro APP to disable the physical power button on the plug.
- **Indoor Use Only:** Do not use this device outdoors or in wet conditions.
- **Electrical Rating:** Do not exceed the maximum load of 15A / 1800W.
- **Voltage:** Operates on 120 Volts (AC).

Ensure Home Safety



Flame-retardant
material



Overload
protection



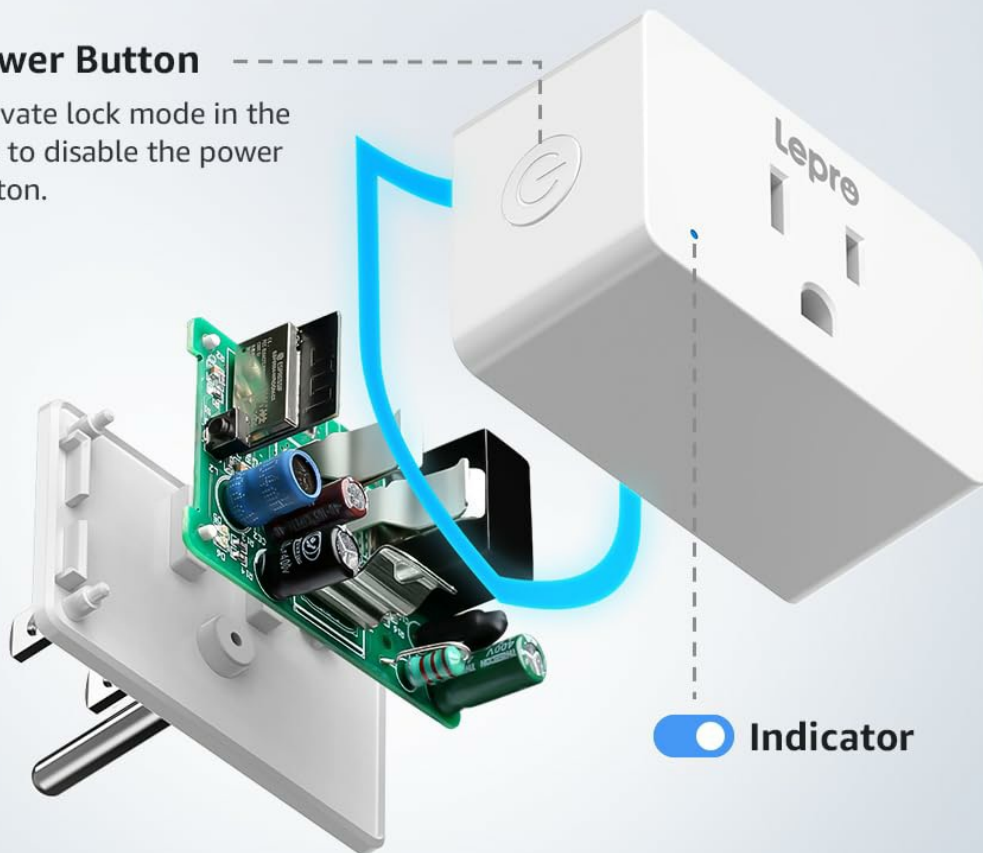
Short-circuit
protection



Child Proof
Design

Power Button

Activate lock mode in the app to disable the power button.



FC

IC

Figure 2.1: Safety features of the Lepre P1 Smart Plug, highlighting its flame-retardant casing, overload and short-circuit protection, and child-proof design. The diagram also shows the internal components and the power button with an indicator light.

3. PRODUCT OVERVIEW

3.1 Components

Each Lepro P1 Smart Plug unit consists of a compact housing with a standard three-prong plug, a single smart outlet, and a manual power button with an indicator light.



Figure 3.1: Lepro P1 Smart Plugs in use, demonstrating their compact design that allows two plugs to be used in a standard duplex outlet without obstruction. The image also shows the accompanying mobile application for control.

3.2 Key Features

- **Smart Voice Control:** Compatible with Amazon Alexa and Google Assistant for hands-free operation.
- **APP Control:** Remote control of connected devices from anywhere using the Lepro APP.
- **Easy Connection:** Supports both Bluetooth and 2.4GHz Wi-Fi for stable and user-friendly setup.
- **Personalized Scheduling:** Set timers and routines to automate device operation.
- **Group Control:** Manage multiple smart plugs simultaneously.
- **Power Outage Memory:** Automatically restores previous settings after a power interruption.
- **Compact Design:** Measures 2.32 x 1.5 x 1.14 inches, designed to leave adjacent outlets free.

Lepro Smart Plug



Wi-Fi+Bluetooth
Connection



Voice
Control



Timer
& Schedule



APP Control



Group Control



Child Proof Design



Figure 3.2: Overview of the Lepro Smart Plug's main functionalities, such as dual connectivity, voice and app control, scheduling, group management, and safety features.

Compact & Practical Design

Leaving other plugs free for use

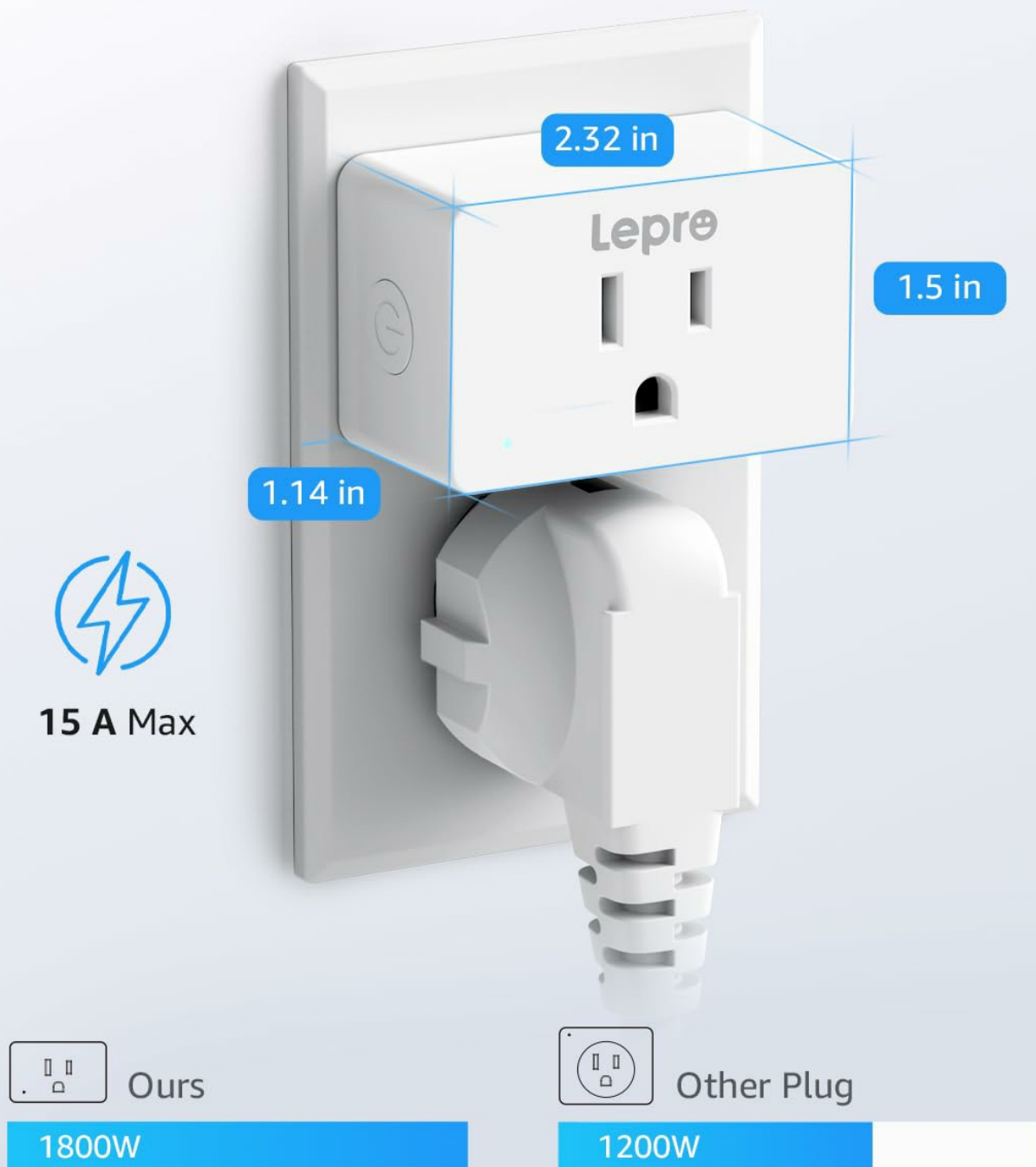


Figure 3.3: The compact and practical design of the Lepre P1 Smart Plug, illustrating its dimensions and how it allows for the use of the second outlet in a duplex receptacle. It also highlights its 15A/1800W maximum capacity.



Figure 3.4: Examples of the Lepro Smart Plug's application in various household settings, including a home office, bedroom, and kitchen, showcasing its adaptability for different appliances.

4. SPECIFICATIONS

Attribute	Value
Model Number	P1
Product Dimensions	2.32 x 1.5 x 1.14 inches
Item Weight	2.12 ounces
Current Rating	15 Amps
Operating Voltage	120 Volts (AC)
Wattage	1800 watts
Operation Mode	ON-OFF-ON
Connector Type	Plug In
Color	White
International Protection Rating	IP40
Connectivity	2.4GHz Wi-Fi, Bluetooth

5. SETUP GUIDE

Follow these steps to set up your Lepro P1 Smart Plug and connect it to your home network.

5.1 Download the Lepro APP

1. Search for "Lepro" in your smartphone's app store (App Store for iOS or Google Play Store for Android).
2. Download and install the Lepro APP.

3. Open the app and register a new account if you don't have one, or log in with existing credentials.



Figure 5.1: Download and register for the Lepro APP. Note that the app requires a 2.4GHz Wi-Fi connection and is not compatible with 5GHz networks or other smart home apps like Smart Life/Lepro LampUX.

5.2 Connect the Smart Plug to Wi-Fi

1. Plug the Lepro P1 Smart Plug into a wall outlet.
2. Ensure your phone's Bluetooth is turned on and connected to a 2.4GHz Wi-Fi network. The smart plug only supports 2.4GHz Wi-Fi.
3. Open the Lepro APP. The app should automatically detect nearby devices or prompt you to add a new device.
4. Click "Add Device" or the "+" icon in the app.
5. Select the P1 model plug from the list.
6. Follow the on-screen instructions to confirm the device's status (e.g., indicator light blinking).
7. Enter your 2.4GHz Wi-Fi network password when prompted.
8. Wait for the app to connect the smart plug to your Wi-Fi network. Once connected, the indicator light on the plug will turn solid blue.
9. You can then rename the device within the app for easier identification (e.g., "Living Room Lamp").



Figure 5.2: Step-by-step guide for connecting the Lepro Smart Plug to your Wi-Fi network using the Lepro APP, including Bluetooth activation and 2.4GHz Wi-Fi network selection.

5.3 Integrate with Alexa or Google Assistant

To enable voice control, link your Lepro account with your Amazon Alexa or Google Home account.

1. In the Lepro APP, navigate to the "Me" or "Profile" section.
2. Select "Alexa" or "Google Home" from the integration options.
3. You will be redirected to the Alexa or Google Home login page. Enter your credentials to link the accounts.
4. Once linked, your smart plug will appear in your Alexa or Google Home app, and you can control it with voice commands.

6. OPERATING INSTRUCTIONS

The Lepro P1 Smart Plug offers multiple ways to control your connected devices.

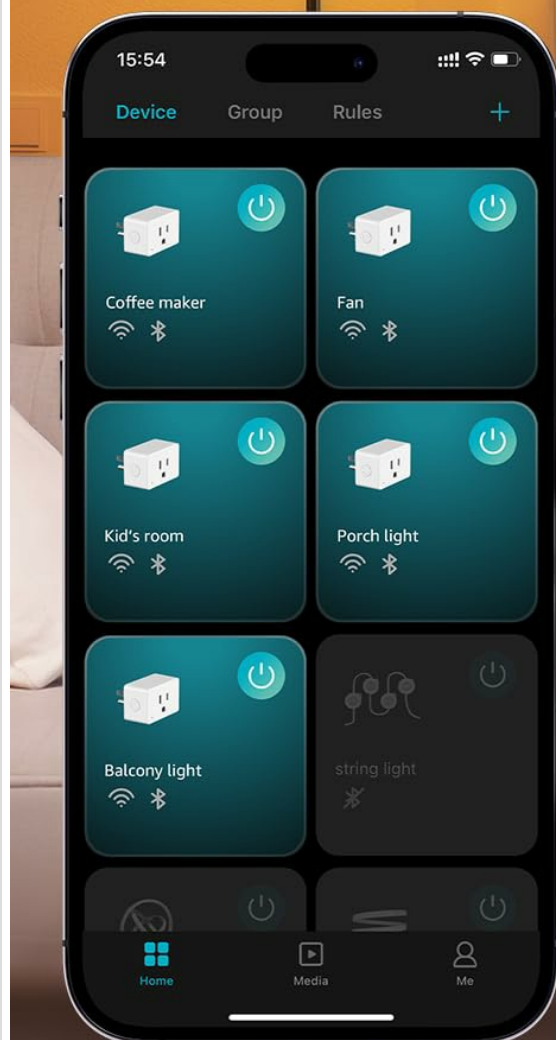
6.1 APP Control

The Lepro APP provides comprehensive control over your smart plugs from anywhere with an internet connection.

- **On/Off Control:** Tap the power icon next to the device name in the app to turn it on or off.
- **Timer & Schedule:** Set specific times for devices to turn on or off automatically. This can be a one-time event, a daily routine, or a countdown.
- **Group Control:** Create groups of smart plugs to control multiple devices simultaneously with a single command.
- **Power Outage Memory:** Configure the plug's behavior after a power outage (e.g., remain off, turn on, or restore previous state).
- **Controllable Indicator Light:** The blue indicator light on the plug can be turned off via the app, which is useful for bedrooms or light-sensitive environments.

APP Remote Control

Control your home anywhere anytime



Only Work with Lepro

Not Compatible with
Lepro LampUX or Smart Life

Figure 6.1: Remote control of home devices using the Lepro APP, showing the interface for managing individual devices and groups from anywhere.

Schedule & Timer

Loop mode
8:00 AM ON

Countdown
30 minutes OFF

Timer
9:00 PM OFF

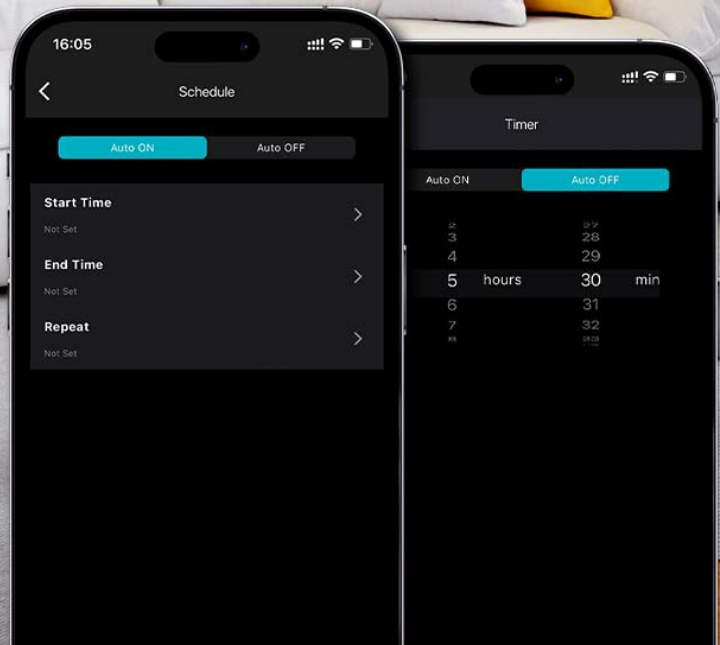


Figure 6.2: Setting up schedules and timers for automated control of devices through the Lepro APP, including loop mode, countdown, and specific on/off times.

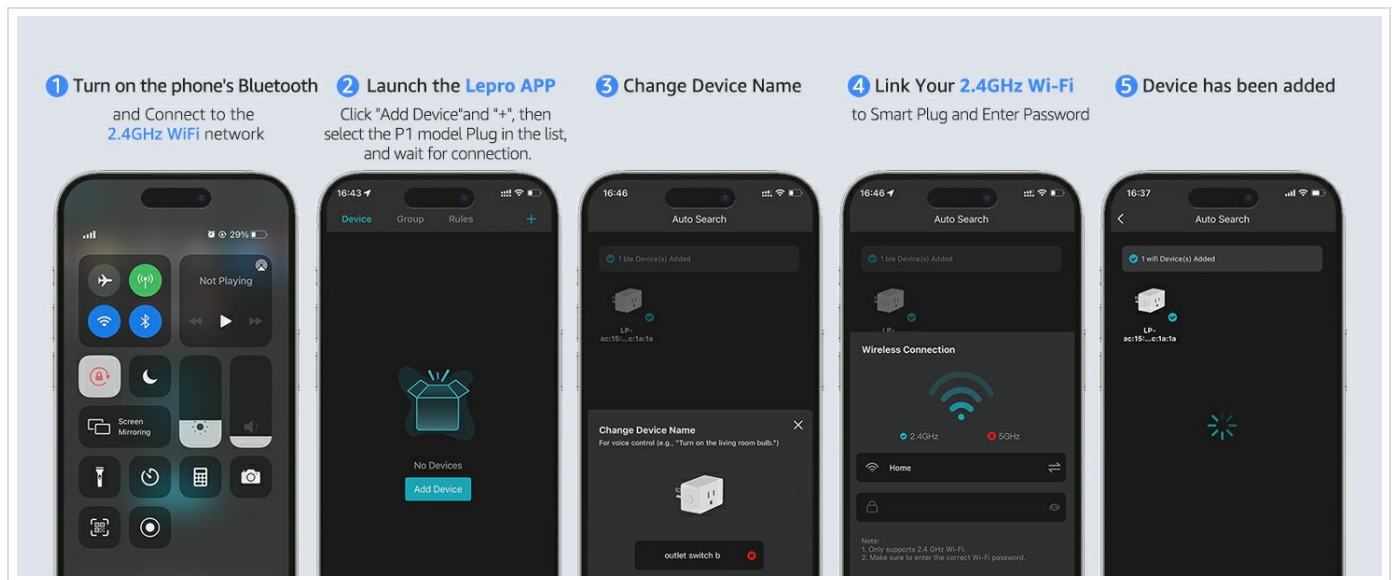


Figure 6.3: Illustrates how to schedule your home devices using the timer and countdown features of the Lepro Smart Plug.

6.2 Voice Control

Once integrated with Alexa or Google Assistant, you can use voice commands to control your smart plug.

- Ensure your smart plug is named clearly in the Lepro APP (e.g., "Kitchen Light").
- Use commands such as:
 - "Alexa, turn on the Kitchen Light."
 - "Hey Google, turn off the Coffee Maker."
 - "Alexa, dim the bedroom lights." (if connected to dimmable lights)

Smart Voice Control

Simple commands free your hands

"Alexa, turn on the kitchen light."

"Alexa, turn on the coffee maker at 7 AM everyday"

"Okay"



Lepro
APP

Works
with



Works with
Hey Google

Figure 6.4: Demonstrates smart voice control using Alexa, allowing users to operate devices with simple commands.

6.3 Manual Control

Each smart plug has a physical power button that allows you to manually turn the connected device on or off. This button can be disabled via the Lepro APP for child safety.

7. MAINTENANCE

To ensure optimal performance and longevity of your Lepro P1 Smart Plug, follow these maintenance guidelines:

- **Cleaning:** Disconnect the smart plug from the power outlet before cleaning. Use a soft, dry cloth to wipe the surface. Do not use liquid cleaners or sprays.
- **Storage:** When not in use for extended periods, store the smart plug in a cool, dry place away from direct sunlight and moisture.
- **Avoid Overloading:** Do not connect devices that exceed the maximum rated power of 1800W (15A).
- **Environmental Conditions:** Avoid exposing the smart plug to extreme temperatures, humidity, or corrosive environments.

8. TROUBLESHOOTING

If you encounter issues with your Lepro P1 Smart Plug, refer to the following common troubleshooting steps:


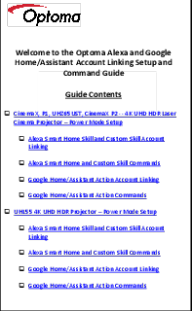
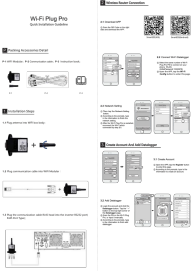


Problem	Solution
Smart plug cannot connect to Wi-Fi.	<ul style="list-style-type: none">◦ Ensure your Wi-Fi network is 2.4GHz. The plug does not support 5GHz Wi-Fi.◦ Check your Wi-Fi password for accuracy.◦ Make sure the smart plug is within range of your Wi-Fi router.◦ Restart your Wi-Fi router and try connecting again.◦ Ensure your phone's Bluetooth is enabled during the setup process.
Voice control (Alexa/Google Assistant) is not working.	<ul style="list-style-type: none">◦ Verify that your Lepro account is correctly linked to your Alexa or Google Home account.◦ Ensure the smart plug is connected to the Lepro APP and online.◦ Check the device name in the Lepro APP and use that exact name in your voice commands.◦ Try disabling and re-enabling the Lepro skill/service in your Alexa/Google Home app.
Scheduled timers are not activating.	<ul style="list-style-type: none">◦ Confirm that the schedule is correctly set up and enabled in the Lepro APP.◦ Ensure the smart plug has a stable Wi-Fi connection.◦ Check your phone's time zone settings and ensure they match the app's settings.
Smart plug is unresponsive.	<ul style="list-style-type: none">◦ Unplug the smart plug from the outlet, wait 10 seconds, and plug it back in.◦ Check if the connected appliance is working correctly when plugged directly into a standard outlet.◦ If the issue persists, consider resetting the smart plug (refer to the app for specific reset instructions, usually involving holding the power button).

9. WARRANTY AND SUPPORT

For warranty information and technical support, please contact Lepro customer service directly. Details are typically available on the product packaging or the official Lepro website. Keep your purchase receipt as proof of purchase for warranty claims.

Manufacturer: Lepro

Related Documents - P1

	<p>Litokam Smart Camera: Quick Start Guide and Setup</p> <p>Comprehensive guide to setting up your Litokam smart camera, including app installation, network connection, customer support, and warranty information.</p>
	<p>Optoma Projector Alexa & Google Home Setup and Command Guide</p> <p>Learn how to link your Optoma 4K UHD HDR projectors with Amazon Alexa and Google Home/Assistant. This guide provides step-by-step instructions for account setup and lists available voice commands for smart control.</p>
	<p>Wi-Fi Plug Pro Quick Installation Guide</p> <p>A concise guide for installing and connecting the Wi-Fi Plug Pro, including packing details, wireless router connection, and account creation with datalogger setup.</p>
	<p>AutomationDirect Productivity1000 User Manual: Installation, Programming, and Operation Guide</p> <p>Comprehensive user manual for the AutomationDirect Productivity1000 Programmable Controller system. Covers installation, hardware specifications, programming with Productivity Suite software, communications, maintenance, and troubleshooting for PLC systems.</p>
	<p>GHome Smart P1 User Manual: Setup, Specifications, and Operation</p> <p>Official user manual for the GHome Smart P1 smart plug by CUCO. Learn how to set up, connect to the GHome Smart app, view specifications, and follow safety guidelines for this 3680W smart plug.</p>

