

GROWNEER AX240101001

# GROWNEER Bathroom Fan with Bluetooth Speaker User Manual

Model: AX240101001 | Brand: GROWNEER

## 1. PRODUCT OVERVIEW

The GROWNEER Bathroom Fan is an advanced ventilation solution designed for modern bathrooms. It integrates multiple functions including powerful exhaust, rapid heating, versatile lighting with RGB and color temperature options, and a built-in Bluetooth speaker for an enhanced audio experience. This manual provides detailed instructions for installation, operation, and maintenance.



Figure 1: GROWNEER Bathroom Fan with Bluetooth Speaker and Remote Control

### Key Features:

- **Ventilation:** 110/160 CFM airflow with 1.0 Sone ultra-quiet operation, suitable for rooms up to 160 sq. ft.
- **Heating:** Integrated heater with two adjustable temperature settings and a Smart Shower Mode (60 min heating, 15 min auto ventilation).
- **Lighting:** 2700K/4000K/5000K 3-speed adjustable color temperature, 200lm 2700K night light, and 9 unique RGB modes.
- **Audio:** Built-in Bluetooth speaker for immersive sound, controllable via remote.
- **Control:** Full-function remote control for all settings.

## 2. SETUP AND INSTALLATION

Proper installation is crucial for optimal performance and safety. It is recommended that installation be performed by a qualified electrician.

### 2.1 Unboxing and Components

Carefully unpack all components and verify against the packing list. The package includes the fan housing, light/speaker panel, mounting bracket, remote control, and instruction manual.

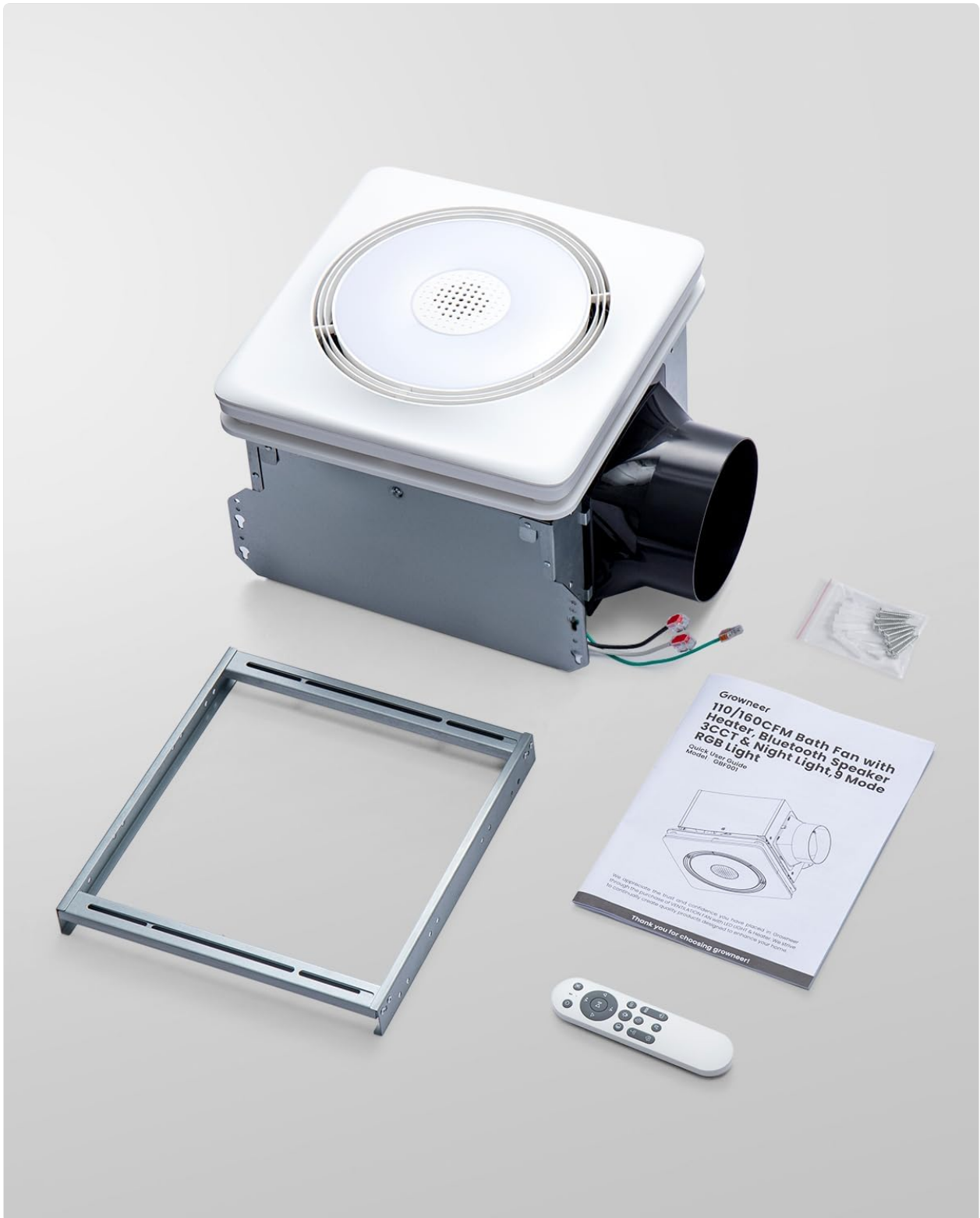


Figure 2: Unboxed Components

## 2.2 Installation Requirements

- Installation size requirement: 12.12 x 11.37 x 9.5 inches.
- Vent duct size: 6 inch (duct not included).
- Power source: AC 120 Volts.

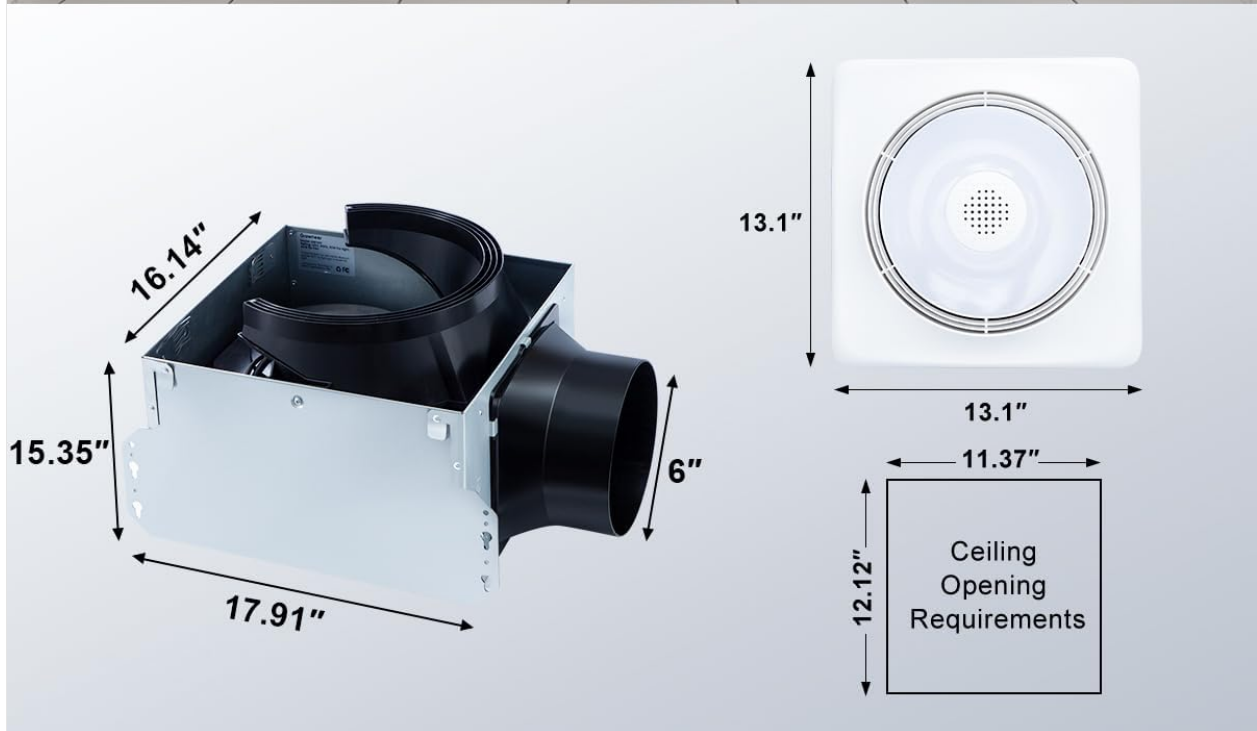


Figure 3: Installation Dimensions

## 2.3 Step-by-Step Installation

1. **Prepare Ceiling Opening:** Use the provided drywall cutout template to mark and cut the appropriate opening in your ceiling.
2. **Mount the Bracket:** Secure the mounting bracket to the ceiling joists using appropriate screws.
3. **Install Fan Housing:** Insert the fan housing into the ceiling opening and attach it to the mounting bracket.
4. **Electrical Wiring:** Connect the fan's electrical wires (Black-L, White-N, Green-GND) to your household wiring. Ensure all connections are secure and follow local electrical codes.
5. **Connect Ducting:** Attach a 6-inch ventilation duct (not included) to the fan's exhaust port and secure it

with tape.

6. **Connect Light/Speaker Panel:** Connect the LED and Bluetooth wires from the light/speaker panel to the corresponding connectors on the fan housing.
7. **Secure Panel:** Squeeze the panel springs and insert them into the spring rails on the fan housing, then push the panel flush with the ceiling.

## 2.4 Installation Videos

Your browser does not support the video tag.

Video 1: Bathroom Exhaust Fan with Light and Heater Installation Guide. This video demonstrates the complete installation process for the fan, light, and heater components.

Your browser does not support the video tag.

Video 2: Mounting GROWNEER Bathroom Exhaust Fan Using a Bracket. This video focuses on the process of securely mounting the fan unit using its bracket.

---

## 3. OPERATING INSTRUCTIONS

All functions of the GROWNEER Bathroom Fan are operated via the included remote control. The maximum range of the remote control is 19 ft; the recommended optimal distance is within 6 ft.

### 3.1 Remote Control Functions



# Easy Operation



Figure 4: Remote Control Layout

- **Power ON/OFF:** Turn on/off all functions with one click.
- **Fan ON/OFF:** Two-speed adjustment (110/160 CFM) with one-touch switching. The 160 CFM speed is higher, and slight noise is a normal occurrence. Note: The fan has a 3-second delay after starting to protect the motor.
- **Heater:** Two-speed adjustment (1800W/900W) with one-touch switching. Note: The heating function will have a 15-second delay after being turned off to protect the lifespan of the heating module.
- **Light Control:** Light ON/OFF, Brightness adjustment (20%-60%-100%), Color Temperature (CCT) adjustment (2700K/4000K/5000K).
- **RGB Mode:** Explore 9 unique RGB modes for personalized ambiance.

- **Night Light:** 200lm 2700K night light for soft illumination.
- **Music Sync:** Play/Pause, Volume Up/Down, Previous/Next Track.

### 3.2 Smart Modes

- **Smart Shower Mode:** Offers 60 minutes of heating followed by 15 minutes of automatic ventilation to dry out the bathroom.
- **Smart Dry Room Mode:** (Not detailed in provided data, assume similar automated ventilation/heating cycle for drying).

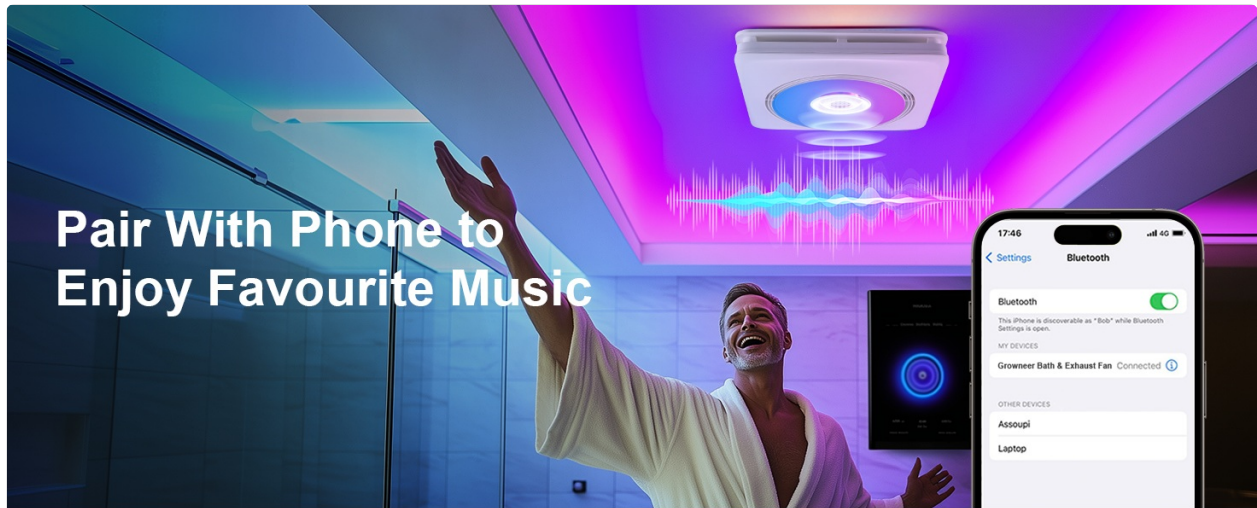


Figure 5: Smart Modes Explained

### 3.3 Bluetooth Speaker Pairing

The remote control is pre-paired with the product at the factory. To connect your phone to the Bluetooth speaker:

1. Ensure the fan is powered on.
2. On your phone, search for "GROWNEER Bath & Exhaust Fan" in your Bluetooth settings.
3. Select the device to connect. A prompt sound from the fan indicates Bluetooth is connected.

## Two Smart Modes

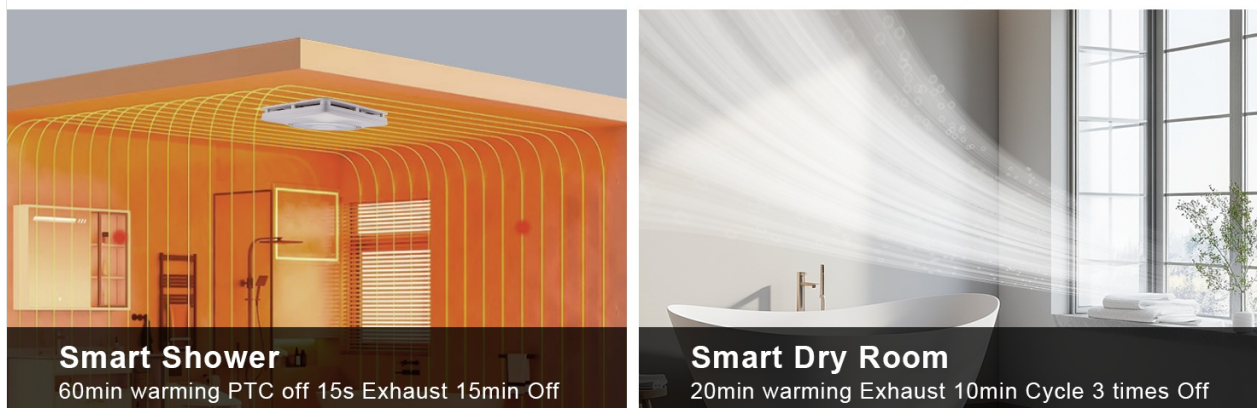


Figure 6: Bluetooth Pairing

Your browser does not support the video tag.

Video 3: GROWNEER Bathroom Exhaust Fan with Bluetooth Speaker Overview. This video highlights the key features and operation of the fan, including the Bluetooth speaker.

## 4. MAINTENANCE

Regular maintenance ensures the longevity and efficient operation of your GROWNEER Bathroom Fan.

### 4.1 Cleaning

- Always disconnect power before cleaning.
- Wipe the exterior surfaces of the fan and light panel with a soft, damp cloth. Do not use abrasive cleaners.
- Periodically clean the fan grille to prevent dust buildup, which can impede airflow.

## 5. TROUBLESHOOTING

If you encounter any issues with your GROWNEER Bathroom Fan, refer to the following common solutions:

### 5.1 Lost Remote Control

1. Request a replacement remote control from GROWNEER customer support.
2. After receiving the new remote, restart the power of the fan. Press the remote control power button 5-6 times within 30 seconds. Pairing is successful after hearing a prompt sound from the fan.

### 5.2 Fan Not Operating / Weak Airflow

- Check the power connection to ensure it is secure.
- Verify that the fan is turned on via the remote control.
- Ensure the exhaust ducting is not blocked or kinked.
- Clean the fan grille and internal components if dust or debris is present.

### 5.3 Light Not Functioning

- Check the light ON/OFF button on the remote.
- Ensure the light panel's wires are securely connected to the fan housing.

### 5.4 Bluetooth Connection Issues

- Ensure the fan is powered on and within Bluetooth range of your device.
- Forget the device on your phone's Bluetooth settings and attempt to re-pair.
- Restart both the fan (by cycling power) and your Bluetooth device.

## 6. SPECIFICATIONS

Feature	Specification
Brand	GROWNEER



Model Name	AX240101001
Air Flow Capacity	110/160 CFM
Noise Level	1.0 Sone
Heater Wattage	1800W / 900W
Light Type	LED (1500lm)
Color Temperature	2700K/4000K/5000K
RGB Modes	9
Nightlight	200lm 2700K
Control Method	Remote
Product Dimensions	9.5"D x 11.37"W x 12.12"H
Power Source	AC
Voltage	120 Volts
Item Weight	18.86 pounds

# 40W Powerful Motor



Figure 7: Motor and Performance Specifications

## 7. WARRANTY AND SUPPORT

GROWNEER offers a **12-month warranty** and **24-hour customer support** to ensure your satisfaction. If you encounter any issues, please do not hesitate to reach out to us.

### Contact Information:

- **Phone:** 1(855)626-9888



- **Online Support:** Refer to your product packaging or the official GROWNEER website for additional contact methods.



Figure 8: Dedicated Customer Support

© 2025 GROWNEER. All rights reserved.

Related Documents - AX240101001

<div><p><b>Growneer</b> <b>110/160CFM Bath Fan with Heater, 3CCT &amp; Night Light, Humidity Sensor</b> Quick User Guide Model: GBF002</p><p><small>We appreciate the trust and confidence you have placed in Growneer through the purchase of this product. We are committed to providing the best possible customer service experience.</small></p><p>Thank you for choosing growneer!</p></div>	<p><a href="#">Growneer 110/160CFM Bath Fan with Heater, 3CCT &amp; Night Light, Humidity Sensor Quick User Guide</a></p> <p>A quick user guide for the Growneer 110/160CFM Bath Fan, detailing its features including a heater, 3-color temperature (CCT) light, night light, and humidity sensor. The guide covers safety information, product specifications, typical installation procedures for new and existing constructions, wiring diagrams, troubleshooting, and remote operation.</p>
<div><p><b>Growneer</b> <b>110/160CFM Bath Fan with Heater, Bluetooth Speaker, 3CCT &amp; Night Light, 5 Mode RGB Light</b> Quick User Guide Model: GBF001</p><p><small>We appreciate the trust and confidence you have placed in Growneer through the purchase of this product. We are committed to providing the best possible customer service experience.</small></p><p>Thank you for choosing growneer!</p></div>	<p><a href="#">Growneer GBF001 Bath Fan with Heater, Bluetooth Speaker, RGB Light: Quick User Guide</a></p> <p>This guide provides instructions for the Growneer GBF001 Bath Fan, including installation, operation, and maintenance. Features include a heater, Bluetooth speaker, RGB lighting, and a night light.</p>

