

## Elitech LogEt5TE External-Temp Blue 1

# Elitech LogEt5TE USB Digital Temperature Data Logger User Manual

Model: LogEt5TE External-Temp Blue 1

## 1. INTRODUCTION

The Elitech LogEt5TE is a reusable USB digital temperature data logger designed for precise and reliable temperature monitoring. Featuring an external probe, shadow data function, and automatic PDF/CSV report generation, it is ideal for applications in life science, food cold chain, and industrial fields. This manual provides detailed instructions for setting up, operating, and maintaining your LogEt5TE data logger.



Figure 1: Elitech LogEt5TE Data Logger with External Probe

## 2. PRODUCT FEATURES

- **Upgraded with Shadow Data Function:** Ensures data integrity even if the logger is stopped or started inadvertently.
- **Auto PDF & CSV Report:** Generates reports with embedded data automatically, requiring no additional software for access.
- **Data Visualization:** Displays current temperature, maximum/minimum values, MKT value, current date, and record points on the screen. Fahrenheit/Celsius units are switchable.
- **Parameter Settable:** Allows configuration of temperature unit, alarm range, and logging interval. Advanced functions are available via Elitechlog software.
- **Reusable Temperature Data Logger:** Offers a wide temperature measuring range of -22°F~158°F (-30°C ~70°C) with high accuracy ( $\pm 0.1^{\circ}\text{C}/\pm 0.1^{\circ}\text{F}$ ). Complies with FDA 21 CFR Part 11 standard.

## 3. SPECIFICATIONS

Specification	Value
---------------	-------

Specification	Value
Brand	Elitech
Model	LogEt5TE External-Temp Blue 1
Temperature Range	-22°F~158°F (-30°C ~70°C)
Temperature Accuracy	±0.1°C/±0.1°F
Data Storage Capacity	32,000 points
Report Format	Auto PDF & CSV
Connectivity	USB
Dimensions	4 x 3 x 1 inches (Package)
Weight	4.8 ounces (Package)
Compliance	FDA 21 CFR Part 11

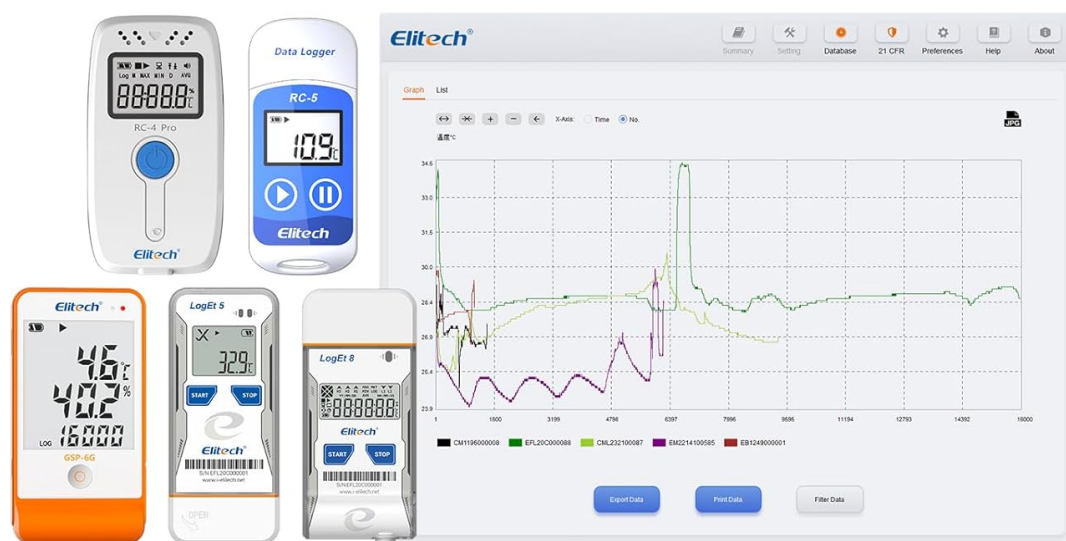
## 4. COMPONENTS OVERVIEW

---

Familiarize yourself with the key components of your LogEt5TE data logger:

# Up to 30 Loggers Data Comparison Graphs & Tables

Powerful Software/ Easy Monitoring/ DIY Your Analysis



Note: Data from the same sensor type can be compared

Figure 2: LogEt5TE Component Diagram

1. **Internal Sensor:** Measures ambient temperature.
2. **LCD Screen:** Displays current readings, status, and other data.
3. **Buttons (START/STOP):** Used for initiating and terminating logging, and navigating display modes.
4. **USB Port:** For connecting to a computer to export data and configure settings.
5. **External Sensor:** Probe for measuring temperature in specific environments (e.g., inside a refrigerator).

## 5. SETUP

### 5.1 Initial Power-Up

The device typically comes with a pre-installed battery. If the device does not power on, ensure the battery is correctly inserted. The battery compartment is located at the back of the device.

### 5.2 Software Installation (Elitechlog)

While the LogEt5TE can generate PDF/CSV reports without software, the Elitechlog software is required for advanced parameter settings, such as temperature unit switching, alarm range configuration, and logging

interval adjustments. It also offers additional data export features.

- Download the Elitechlog software from the official Elitech website: [www.i-elitech.net](http://www.i-elitech.net).
- Install the software on your Windows or macOS computer by following the on-screen instructions.

*Innovation Preceding All*

# Large Capacity Data Storage

32000 Points Large Capacity Data Storage  
Logging Internal 10S~24H  
Data can be cleared and reused when capacity is full



Figure 3: USB Plug and Play for Data Export

## 6. OPERATION

### 6.1 Starting and Stopping Logging

To start recording data:

1. Press and hold the **START** button (left button) for 5 seconds.
2. Recording begins when a triangle symbol appears in the upper left corner of the LCD screen.

To stop recording data:

1. Press and hold the **STOP** button (right button) for 5 seconds.
2. Recording stops when a square symbol appears in the upper left corner of the LCD screen.

## 6.2 Viewing Data on Device

While the device is logging or after it has stopped, you can short press the **START** button to cycle through various display modes:

- Current Date (Month and Day)
- Current Time
- First Record Time
- First Recorded Value
- Maximum Recorded Value
- Minimum Recorded Value
- Number of Data Items Recorded Since Switch-on
- Average (AVG) Value of Recorded Data
- Mean Kinetic Temperature (MKT) Value of Recorded Data

## 6.3 Data Export

The LogEt5TE supports direct data export in PDF and CSV formats without the need for special software. Simply plug the device into a USB port on your computer.

- Connect the data logger to your computer's USB port.
- The device will appear as a removable drive.
- Locate and open the generated PDF and/or CSV files to view your data.
- For advanced analysis, parameter settings, or to clear data for reuse, use the Elitechlog software.



Figure 4: Auto-Generated PDF & CSV Files

## 6.4 Operation Guide Video

For a visual demonstration of the LogEt5TE's operation, please watch the official Elitech operation guide video:

Video 1: Elitech Operation Guide for LogEt5. This video demonstrates how to start and stop logging, and how to cycle through various data displays on the device's screen, including current date, time, recorded values, and statistical data like maximum, minimum, and average.

## 7. MAINTENANCE

- **Cleaning:** Wipe the device with a soft, dry cloth. Do not use abrasive cleaners or immerse the device in



water.

- **Battery Replacement:** If the battery indicator shows low power, replace the battery promptly to ensure continuous operation and data integrity. Refer to the device's back for battery type (typically a coin cell battery).
- **Storage:** Store the data logger in a cool, dry place away from direct sunlight and extreme temperatures when not in use.
- **Data Management:** Regularly back up important data to your computer and clear the logger's memory using the Elitechlog software if needed, especially before starting new long-term logging sessions.

## 8. TROUBLESHOOTING

- **Device Not Responding:** Ensure the battery is charged and properly inserted. If issues persist, try replacing the battery.
- **Software Not Running/Connecting:** Verify that you have downloaded the correct Elitechlog software version for your operating system (Windows/macOS) from the official website. Ensure your USB drivers are up to date. Try running the software as an administrator.
- **Data Corruption/Loss:** Always ensure the device is properly stopped before disconnecting it from a computer or removing the battery. The shadow data function helps mitigate some data loss, but proper handling is crucial.
- **Inaccurate Readings:** Ensure the external probe is securely connected and positioned correctly in the environment being monitored. Avoid placing the logger near heat sources or in direct sunlight if measuring ambient temperature.





## 9. WARRANTY AND SUPPORT

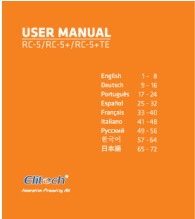


Elitech products are designed for reliability and performance. For warranty information, technical support, or further assistance, please visit the official Elitech website or contact their customer service department. Keep your purchase receipt as proof of purchase for warranty claims.

Official Website: [www.i-elitech.net](http://www.i-elitech.net)

© 2025 Elitech. All rights reserved.

### Related Documents - LogEt5TE External-Temp Blue 1

 Multilingual specification RC-5/5+ series	<a href="#">Elitech RC-5/5+ Series: Temperature Data Logger Specifications and User Manual</a> Comprehensive technical specifications, operation instructions, and user guide for the Elitech RC-5 and RC-5+ series temperature data loggers, designed for cold chain monitoring.
 RCW-600WIFI USER MANUAL Elitech cloud login: <a href="http://www.i-elitech.com">www.i-elitech.com</a>  	<a href="#">Elitech RCW-600WIFI IoT Temperature Monitor User Manual</a> User manual for the Elitech RCW-600WIFI, a two-channel IoT temperature monitor with WiFi connectivity for remote data viewing, monitoring, and management in food, catering, logistics, and HACCP industries.

	<p><a href="#">Elitech RC-5+ Temperature Data Logger: User Manual and Specifications</a></p> <p>This manual provides detailed instructions for using the Elitech RC-5+ USB temperature data logger, covering setup, operation, data download, and analysis with Elitech software. Features and technical specifications are also included.</p>
	<p><a href="#">Elitech DR-230 Temperature and Humidity Recorder Instructions</a></p> <p>User manual and instructions for the Elitech DR-230 temperature and humidity recorder, detailing product features, interface, technical specifications, setup, and operation using the Elitech iCold mobile application for monitoring and data logging.</p>
	<p><a href="#">Elitech RCW-400A User Manual: Temperature and Humidity Data Logger</a></p> <p>Comprehensive user manual for the Elitech RCW-400A 4-channel temperature and humidity data logger. Covers features, specifications, operation, sensor installation, and Elitech cloud/app integration for remote monitoring.</p>
	<p><a href="#">Elitech RC-5 Quick Start Guide: Temperature Data Logger</a></p> <p>Quick start guide for the Elitech RC-5 temperature data logger, covering battery installation, software setup, logger operation, technical specifications, and troubleshooting.</p>