



Manuals.plus /

- › HODO /
- › HODO USB C to Dual HDMI Adapter Docking Station User Manual

HODO 6 IN 1 Dual HDMI Docking Station

HODO USB C to Dual HDMI Adapter Docking Station User Manual

Model: 6 IN 1 Dual HDMI Docking Station

1. INTRODUCTION

This manual provides detailed instructions for the HODO 6-in-1 USB C to Dual HDMI Adapter Docking Station. This device expands your laptop's connectivity, offering dual 4K 60Hz HDMI outputs, two USB-A ports for peripherals, and a 100W Power Delivery (PD) charging port.



Image 1.1: HODO 6-in-1 USB C Dual HDMI Adapter Docking Station. This image displays the silver docking station with its USB-C input cable, two HDMI cables, and two USB-A devices (a flash drive and a wireless receiver) connected or ready to be connected to its ports.

Product Features:

- **Dual 4K 60Hz HDMI Outputs:** Connect two external monitors for extended or mirrored displays at high resolution.
- **2x USB-A Ports:** For connecting keyboards, mice, and other USB peripherals. Supports data transfer.
- **100W Power Delivery (PD) Port:** Allows for pass-through charging of your laptop (up to 85W output) while using the adapter.
- **Compact and Portable Design:** Ideal for travel and desktop use.



Image 1.2: Overview of the HODO 6-in-1 adapter's ports, including PD 100W input, HDMI 1 (4K@60Hz), HDMI 2 (4K@60Hz), and USB 2.0 ports.

General User's Guide Video:

Video 1.1: A comprehensive user's guide for the HODO docking station, demonstrating its features and basic usage.

2. SETUP

2.1 Compatibility Check

Before connecting, ensure your laptop's USB-C port supports the necessary functions for video output. The HODO docking station requires a USB-C port with Full Functionality (Thunderbolt 3/4, or USB-C with DisplayPort, Data, and Power Delivery capabilities).



Image 2.1: Visual guide to identifying compatible USB-C ports on your laptop. Ports labeled 'Full function' (Thunderbolt 3/4), 'USB-C port with full function (Displayport, data, Power Delivery)', or 'USB-C port with full function (Displayport, Power Delivery)' are compatible. Ports that are 'Data only' or 'Charge only' are not compatible for video output.

Compatibility Check Video:

Video 2.1: This video provides instructions on how to check your laptop's USB-C port compatibility before purchasing or using the docking station.

2.2 Connecting the Docking Station

1. Connect the USB-C cable from the docking station to a compatible USB-C port on your laptop.
2. Connect your external HDMI monitors to the HDMI ports on the docking station.
3. If charging your laptop, connect your laptop's power adapter to the PD 100W port on the docking station.

4. Connect any USB peripherals (keyboard, mouse, flash drives) to the USB-A ports.


6-IN-1 USB C Dual HDMI Adapter



PD
100W Input
85W Output



HDMI 2
4K@60Hz



HDMI 1
4K@60Hz



USB 2.0
480Mbps

Image 2.2: The HODO docking station connected to a laptop via USB-C, with an HDMI cable extending to an external monitor.

3. OPERATING INSTRUCTIONS

3.1 Display Modes

The docking station supports various display configurations for Windows and macOS systems.

Windows Display Modes:

Windows systems support both Mirror Mode and Extend Mode (MST) for dual monitors, allowing for distinct content on each screen.

! Check Your Laptop Before Purchase

Please confirm which functions of USB-C port on your laptop support

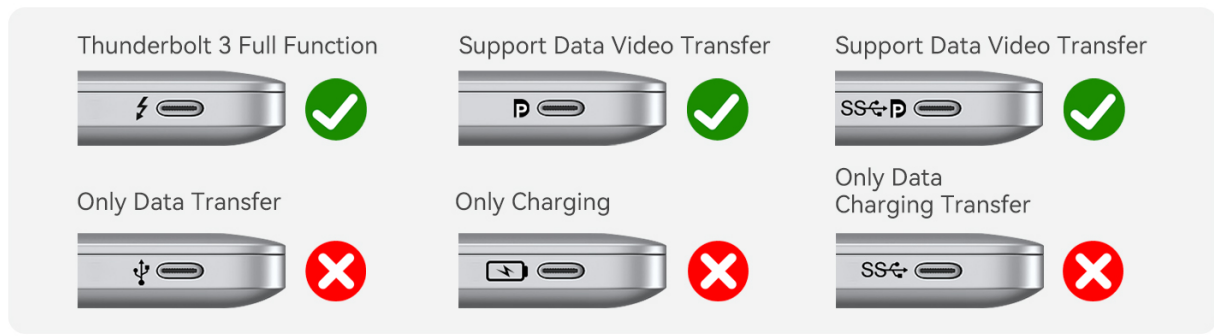


Image 3.1: Windows display modes. This image illustrates Mirror Mode (laptop and both external monitors show 'A') and Extend Mode (laptop shows 'A', one external monitor shows 'B', and the other shows 'C').

macOS Display Modes:

Due to macOS limitations, all extended monitors will display the same content when connecting a MacBook. You can achieve Mirror Mode (laptop and external monitors show identical content) or Non-Mirror Mode (laptop shows 'A', both external monitors show 'B').

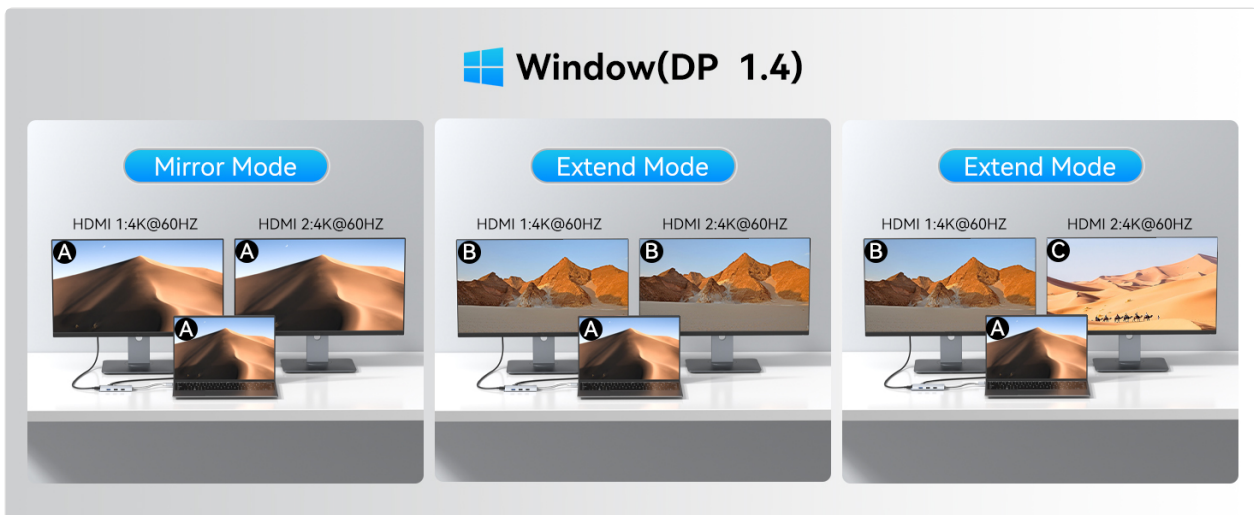


Image 3.2: Mac OS display modes. This image illustrates Mirror Mode (laptop and both external monitors show 'A') and Non-Mirror Mode (laptop shows 'A', both external monitors show 'B'). It also notes that Mac OS does not support MST display.

Windows Multi-Screen Resolution Setting Video:

Video 3.1: This video demonstrates how to configure multi-screen resolution settings in Windows for optimal display with the docking station.

3.2 Power Delivery (PD) Charging

The PD port supports up to 100W input, providing up to 85W output to charge your laptop. Please note that the charging cable and power adapter are not included with the docking station. This port is for charging only and does not support data transfer or video output.

Window(DP 1.2)

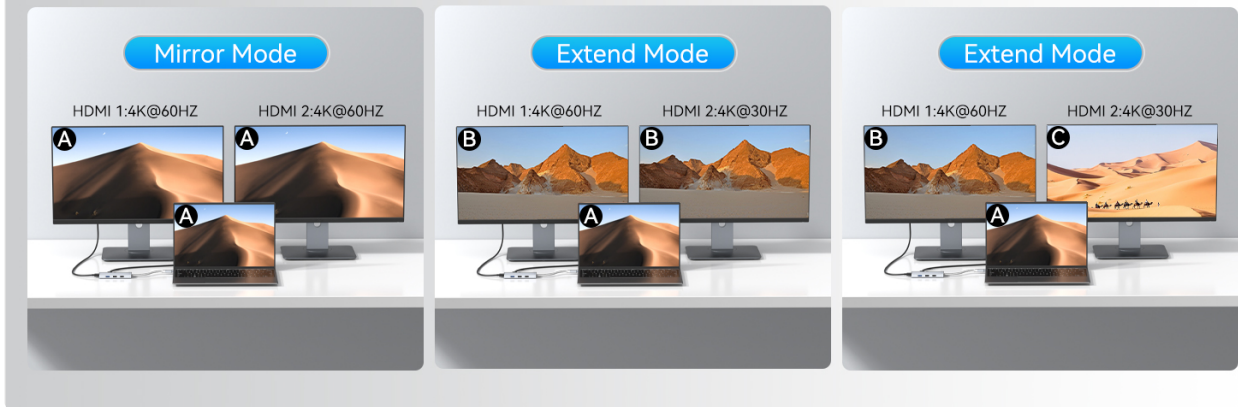


Image 3.3: Illustration of the Power Delivery function, showing a 100W input from a power adapter to the docking station, which then provides 85W output to charge a connected laptop.

3.3 Data Transfer

The two USB-A ports are designed for connecting various USB devices such as keyboards, mice, and USB flash drives for data transfer. These ports do not provide charging capabilities or support audio transfer.



Image 3.4: The USB-A ports on the docking station are shown connected to a mouse and a USB flash drive, indicating their use for data transmission.

4. MAINTENANCE

- Keep the docking station in a dry environment and avoid exposure to moisture or extreme temperatures.
- Clean the device with a soft, dry cloth. Do not use harsh chemicals or abrasive materials.
- Avoid dropping or subjecting the device to strong impacts.
- Ensure proper ventilation around the docking station during use to prevent overheating.

5. TROUBLESHOOTING

5.1 HDMI/DP/VGA Port Issues

Why does my monitor still show no signal input after plugging in HDMI?

This usually indicates that your laptop's USB-C port does not support video output, or there is a configuration issue. Refer to Section 2.1 for compatibility checks. If your port is compatible, try the following:

- Ensure all cables are securely connected.
- Try connecting the monitors one by one to isolate the issue.
- Update your laptop's graphics drivers.
- Test with different HDMI cables, especially if the current cables are longer than 3 meters, as longer cables can cause signal degradation.

Why does the monitor indicate a signal input but show a black screen?

This can occur if the monitor's refresh rate or resolution settings exceed its supported frame rates. To resolve this:

- Set the frame rate externally on your monitor.
- Change the resolution and frame rate on the screen next to your connected laptop in your display settings.
- Refer to Video 3.1 for detailed steps on adjusting Windows display settings.

Why am I only getting screen mirroring with the HDMI port on the Docking Station?

For Windows users, ensure you have selected 'Extend desktop to this display' in your display settings. For macOS users, due to system limitations, the docking station will only extend to a maximum of one non-mirrored screen if they take up only one of the HDMI outputs. Both external monitors will mirror each other.

Why is the screen displayed abnormally, such as screen flickering?

If screen flickering occurs, first confirm which graphics card the expansion is using and then perform a driver update for that graphics card. If the problem persists, replace the cable to verify if the cable is faulty. Additionally, for HDMI/DP/VGA cables, flickering is more likely to occur with cable lengths exceeding 3 meters.

5.2 USB-A/USB-C Port Issues

Why is there latency with my wireless devices?

USB 3.0 devices operating on the 2.4GHz/2.5GHz frequency band can interfere with conventional 2.4GHz/2.5GHz wireless Bluetooth devices, leading to delays or non-functionality. To mitigate this:

- Keep the wireless mouse/keyboard receiver as close to the mouse/keyboard as possible.
- Move the receiver as far away from the USB 3.0 device as possible.
- If your WiFi supports 2.4G/5G dual-band, choose the 5GHz band.
- Consider using EMI shielding tape around the USB 3.0 port.
- Avoid using other 2.4GHz devices (e.g., microwave ovens) simultaneously.
- Use wired mouse and keyboard if interference persists.

Why do my hard disk or USB flash drive not work when connected to USB-C or USB-A?

This issue may be caused by multiple USB ports going dormant due to insufficient external power supply. To address this:

- Ensure your laptop's power adapter is connected to the docking station's PD port.

- Disable USB selective suspend in Windows Power Options: Go to Control Panel > Power Options > Change plan settings > Change advanced power settings > USB settings > USB selective suspend setting > Disabled.
- In Device Manager, for USB Root Hub properties, uncheck 'Allow the computer to turn off this device to save power'.
- For macOS, ensure 'Allow accessories to connect' is set to 'Ask every time' or 'Always' in Privacy & Security settings.
- If using a high-power hard disk, ensure it has its own power supply if needed.

5.3 SD/TF Port (Not applicable to this model)

This model does not include an SD/TF card reader. If you are experiencing issues with an SD/TF port on a different HODO model, please refer to that model's specific manual.

5.4 3.5mm Audio Port (Not applicable to this model)

This model does not include a 3.5mm audio port. If you are experiencing issues with an audio port on a different HODO model, please refer to that model's specific manual.

6. SPECIFICATIONS

Feature	Specification
Model	6 IN 1 Dual HDMI Docking Station
Dimensions	5.12 x 2.72 x 0.63 inches
Item Weight	2.89 ounces
Hardware Interface	HDMI, USB, USB Type C
HDMI Output	Dual 4K@60Hz
USB-A Ports	2x USB-A (Data transfer only)
Power Delivery	100W Input (85W Output)
Special Feature	Fast Charging, Plug and Play
Compatible Devices	Laptops with Thunderbolt 3/4, USB C 3.1 Gen 1/Gen 2, USB-C 3.2 Gen 1/Gen 2 with Power Delivery and DisplayPort functions (e.g., Dell XPS, HP EliteBook, HP Envy x360)

7. WARRANTY AND SUPPORT

HODO products come with a standard manufacturer's warranty. For specific warranty details, technical

support, or any inquiries not covered in this manual, please contact HODO-US customer service directly. You can find contact information on the official HODO website or through your purchase platform.