



Manuals.plus /

- › ProtoArc /
- › ProtoArc Foldable Bluetooth Keyboard and Ergonomic Mouse User Manual

ProtoArc XK01, EM11

ProtoArc Foldable Bluetooth Keyboard and Ergonomic Mouse User Manual

Model: XK01 Keyboard & EM11 Mouse

1. PRODUCT OVERVIEW

The ProtoArc Foldable Bluetooth Keyboard (XK01) and Ergonomic Vertical Mouse (EM11) combo offers a portable and comfortable solution for your computing needs. The keyboard features a full-size layout with a numeric keypad and multi-device Bluetooth connectivity, while the ergonomic mouse promotes a natural wrist position to reduce fatigue.



Image 1.1: ProtoArc Foldable Bluetooth Keyboard and Ergonomic Mouse setup, illustrating multi-device capability.

Key Features:

- **Folding Full-size Wireless Keyboard (XK01):** 105-key layout with numeric keypad (Dimensions: 15.19 x 4.68 inch). Features non-slip pads for stability.
- **Wireless Ergonomic Mouse (EM11):** Designed with an extended wrist rest for a natural, relaxed hand position, reducing fatigue compared to standard mice.
- **Multi-Device Connectivity:** Both devices can sync with up to 3 devices simultaneously via Bluetooth channels, allowing easy switching between Windows, Mac OS, iOS, or Android devices.
- **Rechargeable & Portable:** The keyboard has a built-in 210 mAh battery with 5 months standby time. The mouse has a built-in 500mAh Li-Ion battery. Both are rechargeable via Type-C.
- **Durable Design:** Keyboard features aluminum hinges tested for 100,000 folding actions.

Ergonomic Vertical Mouse

Encourages healthy neutral "handshake" wrist arm positions

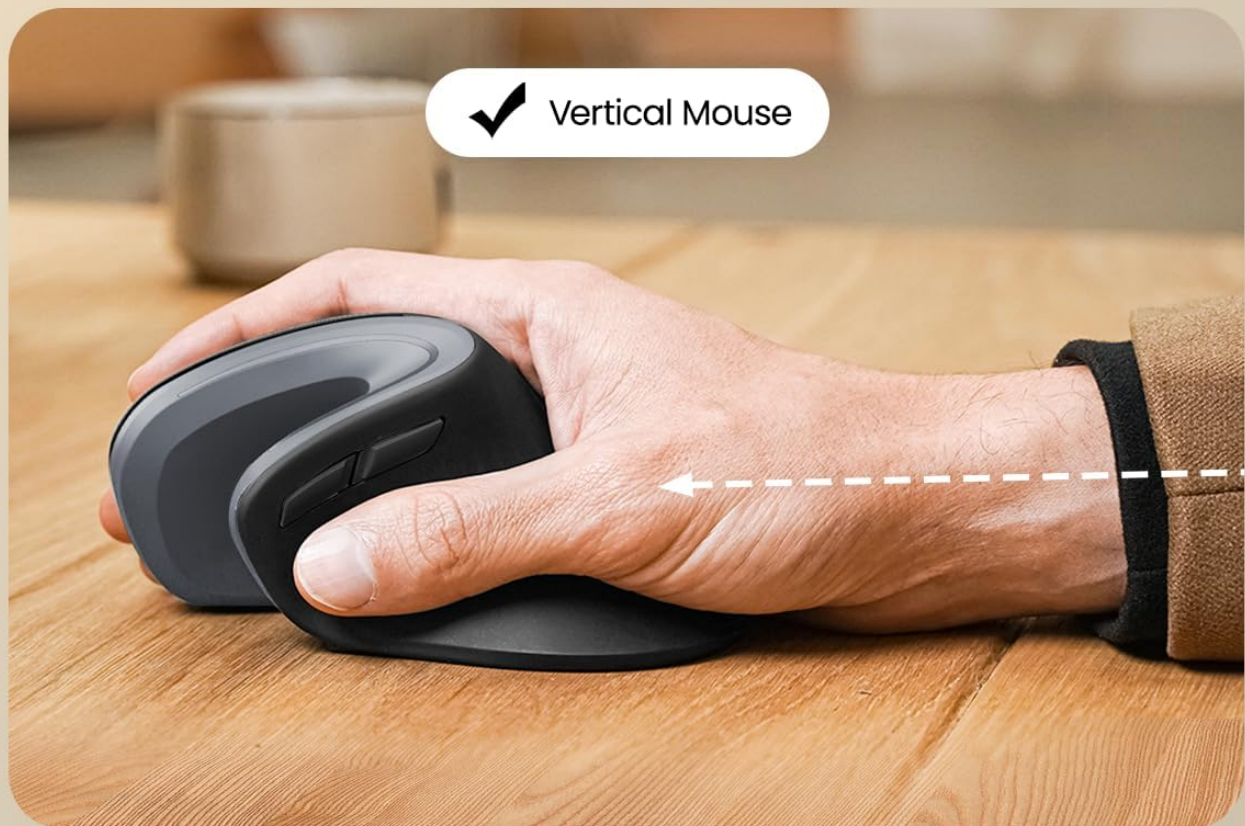


Image 1.2: Ergonomic design of the ProtoArc Vertical Mouse, promoting a healthy wrist position.

58° Angle for a Natural Handshake Position

 58°



Image 1.3: The 58° angle of the ergonomic mouse for a natural handshake position.

2. SETUP AND PAIRING

Follow these steps to set up and pair your ProtoArc Foldable Bluetooth Keyboard and Ergonomic Mouse with your devices.

2.1. Keyboard Setup (XK01)

1. **Unfold the Keyboard:** Gently unfold the keyboard until it lies flat. The magnetic hinges will secure it in place.

2. **Power On:** Locate the power switch (usually on the side or back) and slide it to the 'ON' position. An indicator light will illuminate.
3. **Enter Pairing Mode:** Press and hold one of the Bluetooth channel keys (e.g., BT1, BT2, or BT3) for a few seconds until the corresponding indicator light flashes rapidly. This indicates the keyboard is in pairing mode.
4. **Connect on Your Device:** On your computer, tablet, or smartphone, go to Bluetooth settings. Select "ProtoArc Keyboard" (or similar name) from the list of available devices. Follow any on-screen prompts to complete pairing.
5. **Switch Devices:** To switch between paired devices, simply press the corresponding Bluetooth channel key (BT1, BT2, or BT3).

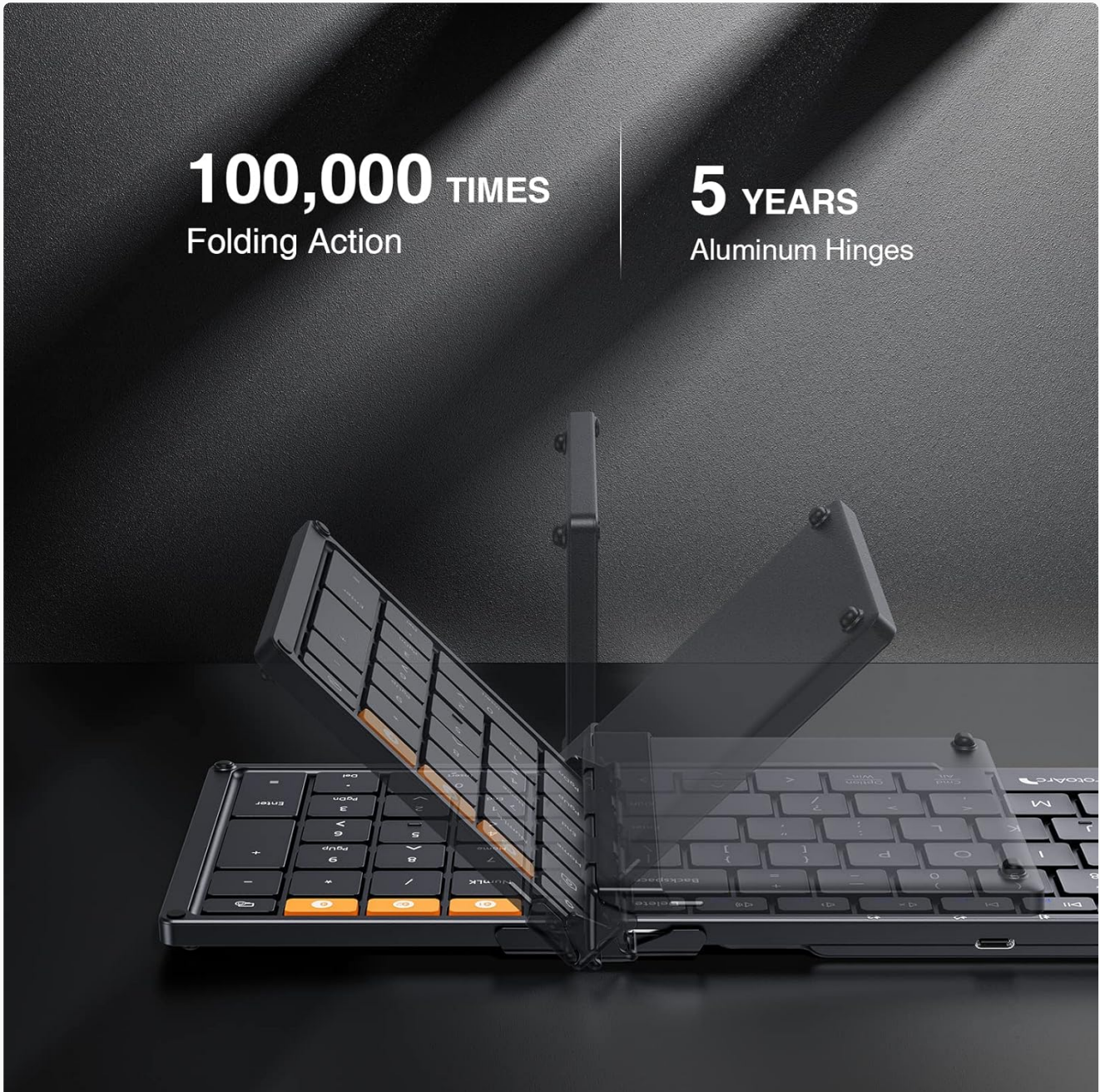


Image 2.1: The keyboard's durable folding mechanism.

2.2. Mouse Setup (EM11)

1. **Power On:** Locate the power switch on the bottom of the mouse and slide it to the 'ON' position.
2. **Enter Pairing Mode:** Press the Bluetooth pairing button (usually on the bottom) for a few seconds until the indicator light flashes.
3. **Connect on Your Device:** On your computer, tablet, or smartphone, go to Bluetooth settings. Select

"ProtoArc Mouse" (or similar name) from the list of available devices. Follow any on-screen prompts to complete pairing.

4. **Multi-Device Pairing:** The mouse also supports multi-device pairing. Refer to the specific instructions in the included user manual for detailed steps on pairing with multiple devices.

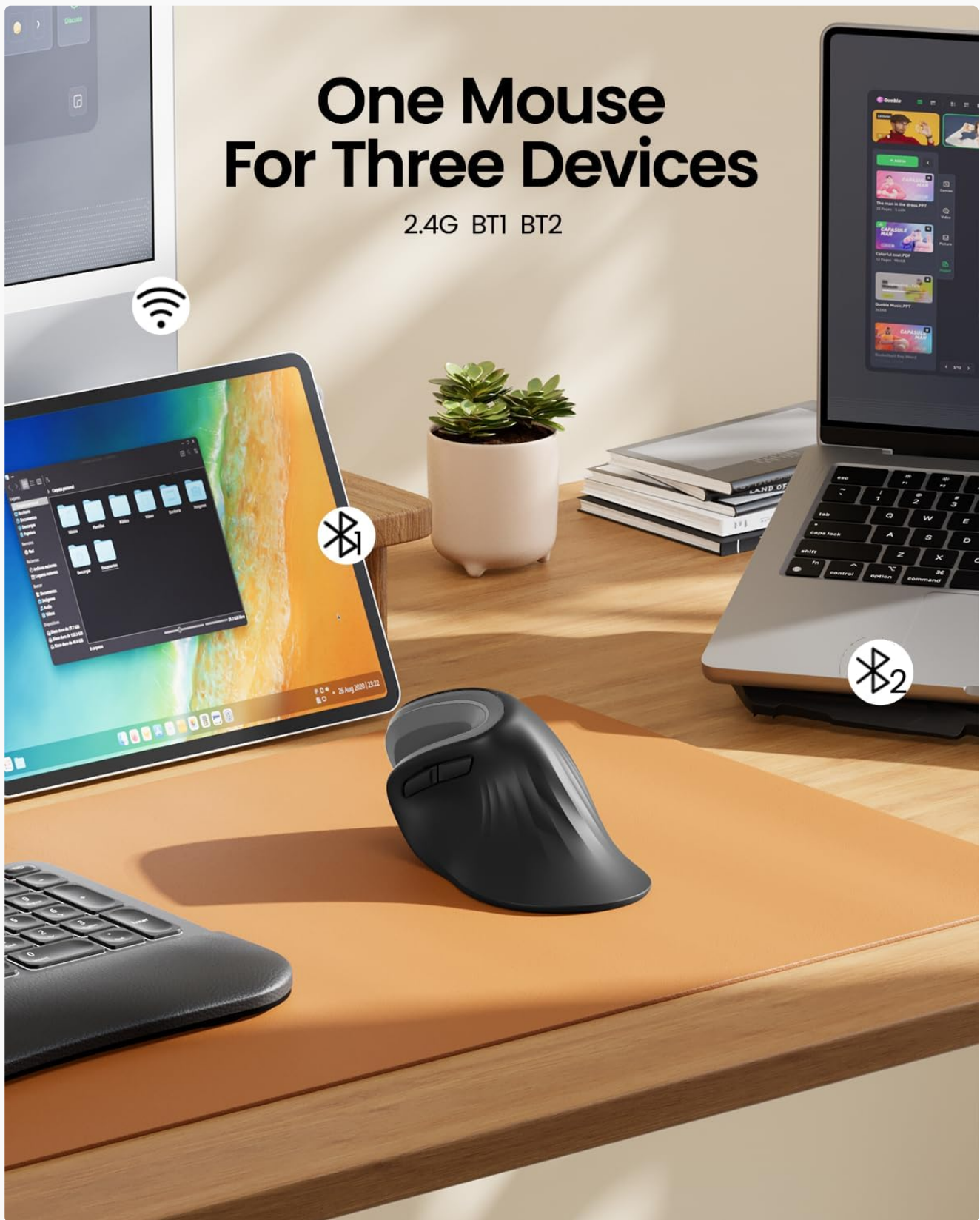


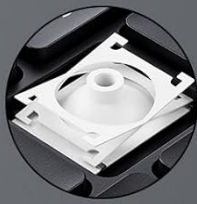
Image 2.2: The ergonomic mouse's ability to connect to three devices.

3. OPERATING INSTRUCTIONS

3.1. Keyboard Usage (XK01)

- **Typing:** The full-size QWERTY layout with scissor-switch keys provides a comfortable and responsive typing experience.
- **Numeric Keypad:** Utilize the integrated numeric keypad for efficient data entry.
- **Function Keys:** Use the Fn key in combination with other keys for various shortcuts and media controls. Refer to the keyboard's key legends for specific functions.
- **Backlight (if applicable):** If your keyboard model includes backlighting, use the designated key combination (often Fn + a specific key) to adjust brightness or toggle the backlight on/off.

SCISSOR SWITCH KEYS



Scissor-switch structure ensure quite and comfortable typing



Image 3.1: Scissor switch keys for comfortable typing.

3.2. Mouse Usage (EM11)

- **Ergonomic Grip:** Hold the mouse with your hand in a natural "handshake" position, allowing your forearm and wrist to remain relaxed.
- **Buttons:** The mouse features standard left/right click buttons, a scroll wheel, and additional programmable buttons for enhanced productivity.
- **DPI Adjustment:** Adjust the mouse sensitivity (DPI) using the dedicated DPI button, typically located near the scroll wheel, to suit your preference.

4. MAINTENANCE AND CHARGING

4.1. Charging

- **Keyboard:** Connect the provided Type-C charging cable to the keyboard's charging port (Image 4.1) and a USB power source. The charging indicator light will show charging status. A full charge provides approximately 5 months of standby time.
- **Mouse:** Connect the provided Type-C charging cable to the mouse's charging port (Image 4.2) and a USB power source. The mouse has a 500mAh Li-Ion battery.



Image 4.1: Keyboard charging port and stable hinge.

Type-C Rechargeable

 **90** Days
Stand-by Time

 **4-5** Hours
Charging Time



Image 4.2: Ergonomic mouse charging via Type-C.

4.2. Cleaning

To clean your devices, power them off and use a soft, dry, lint-free cloth. For stubborn dirt, slightly dampen the cloth with water. Avoid using harsh chemicals or abrasive materials.

5. TROUBLESHOOTING

- **Device Not Connecting:** Ensure both the keyboard and mouse are powered on and in pairing mode. Check

your device's Bluetooth settings to ensure Bluetooth is enabled and the correct device is selected. Try restarting both the peripheral and your host device.

- **Lag or Disconnection:** Ensure there are no obstructions between the peripheral and your device. Move closer to your device. Check battery levels and recharge if necessary.
- **Keys Not Responding:** Check if the keyboard is powered on and connected. If specific keys are not working, try cleaning around them.
- **Mouse Cursor Not Moving:** Ensure the mouse is powered on and connected. Check the surface you are using the mouse on; a non-reflective, even surface is ideal.

If you encounter persistent issues, please refer to the "Warranty and Support" section for contact information.

6. SPECIFICATIONS

Feature	Specification
Brand	ProtoArc
Color	Gray
Connectivity Technology	Bluetooth
Compatible Devices	Tablet, Smartphone, Laptop (Windows, macOS, iOS, Android)
Keyboard Type	Folding Full-size Wireless Keyboard (XK01) with 105 keys, numeric keypad
Keyboard Layout	QWERTY
Mouse Type	Ergonomic Vertical Mouse (EM11)
Hand Orientation	Ambidextrous
Power Source	Battery Powered (Rechargeable via Type-C)
Keyboard Battery	210 mAh (5 months standby)
Mouse Battery	500mAh Li-Ion

7. WARRANTY AND SUPPORT

ProtoArc products come with a standard manufacturer's warranty. For detailed warranty information, product support, or troubleshooting assistance, please contact ProtoArc customer service.

- **Email Support:** support@protoarc.com
- **Website:** www.protoarc.com