



[Manuals.plus](#) /

> [Placdill](#) /

> Placdill 3.0 Self-Cleaning Litter Box (Model BDL-TPCBQA01) User Manual

Placdill BDL-TPCBQA01

Placdill 3.0 Self-Cleaning Litter Box (Model BDL-TPCBQA01) User Manual

Comprehensive instructions for setup, operation, and maintenance.

1. PRODUCT OVERVIEW

The Placdill 3.0 Self-Cleaning Litter Box is an advanced automatic litter management system designed for cats weighing between 2.2 lbs and 18 lbs. It features a 65L litter area, smart app control, multiple safety mechanisms, and an integrated odor control device to maintain a clean and fresh environment for your pet and home. This manual provides detailed instructions for its proper use and care.



Figure 1: Placdill 3.0 Self-Cleaning Litter Box with app control display.

2. SAFETY FEATURES

The Placdill 3.0 litter box incorporates several safety features to ensure the well-being of your cat:

- **Gravity Sensors:** Equipped with 4 gravity sensors to detect the presence of your cat, preventing cleaning cycles when the cat is inside.
- **Infrared Systems:** Infrared sensors provide additional detection, enhancing safety and preventing false triggers.
- **Dual Entrance Sensors:** These sensors detect when your cat enters or exits the litter box, pausing operations if movement is detected during a cycle.
- **Anti-Pinch Technology:** Automatically halts the cleaning mechanism if any obstruction or cat presence is detected, protecting your cat from injury.

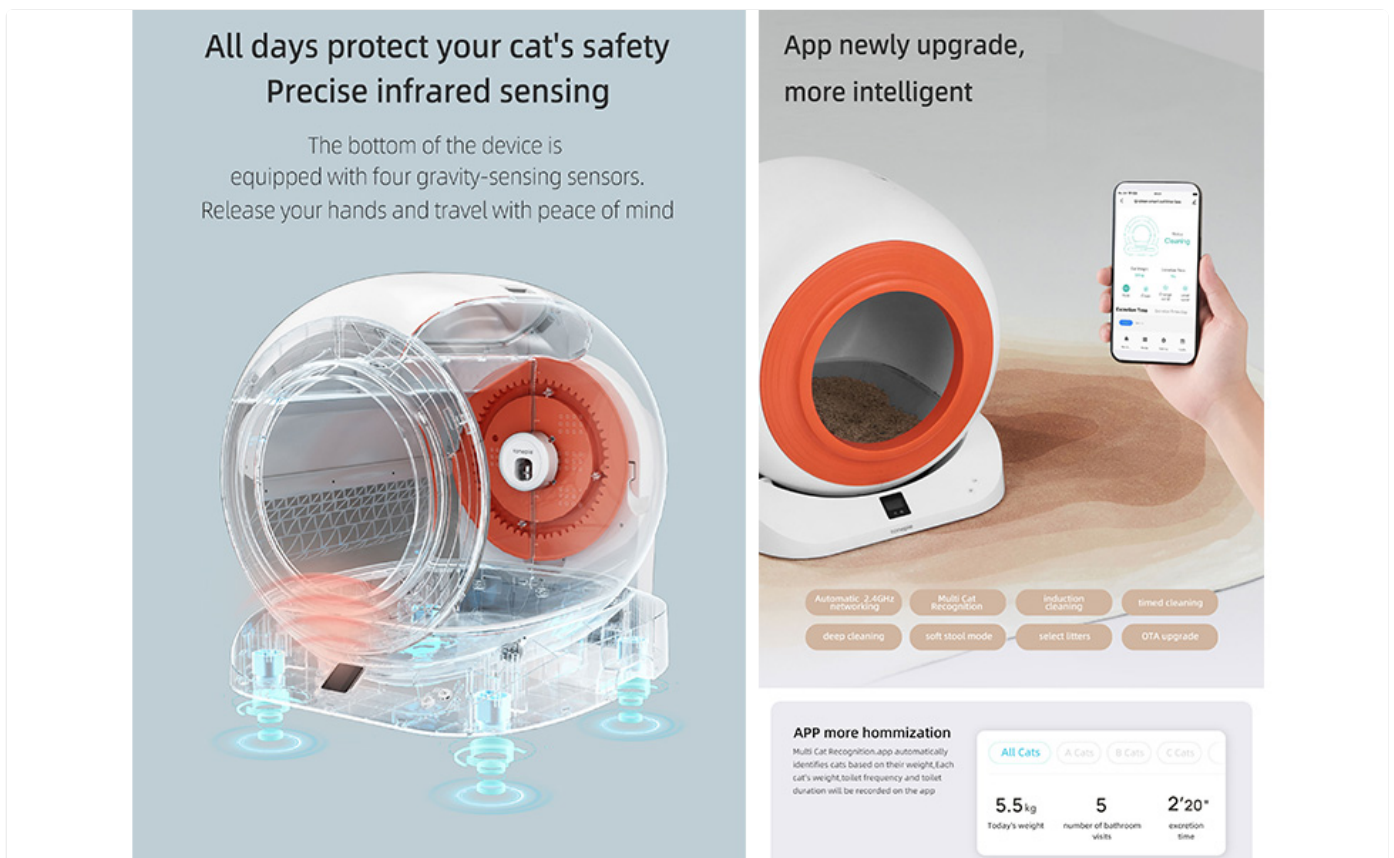


Figure 2: Illustration of the precise infrared sensing and gravity sensors for cat safety.

3. SETUP INSTRUCTIONS

Setting up your Placdill 3.0 Self-Cleaning Litter Box is a quick and straightforward process, typically taking about 10 minutes.

- Unpack Components:** Carefully remove all components from the packaging. Ensure you have the Automatic Cat Litter Box, Advanced Odor Control Device, Cat Litter Mat, Power Adapter, and User Manual. Some accessories may be stored inside the waste bin or drum for shipping.
- Position the Unit:** Place the litter box on a flat, stable surface in a suitable location.
- Add Litter:** Fill the litter compartment with your preferred compatible cat litter (refer to Section 5 for compatibility).
- Connect Power:** Plug the power adapter into the litter box and then into a wall outlet.
- App Pairing (Optional):**
 - Download the dedicated mobile app from your device's app store.
 - Open the app and follow the on-screen instructions to pair the litter box with your 2.4G WiFi network.
 - Configure initial settings such as cleaning schedules and notifications.
- Initial Cycle:** The device may perform an initial calibration cycle upon power-up.

4. OPERATING INSTRUCTIONS

The Placdill 3.0 offers both smart app control and manual operation for convenience.

4.1 Smart App Control

The mobile app provides comprehensive control and monitoring capabilities:

- **Cleaning Schedules:** Set custom cleaning schedules based on your cat's habits.
- **Usage Tracking:** Monitor your cat's activity, including frequency of use and duration.
- **Real-time Notifications:** Receive alerts for cleaning cycles, waste bin status, and other important events.
- **Remote Control:** Initiate cleaning cycles or adjust settings from anywhere.
- **Multiple Cleaning Modes:** Select from various cleaning modes, including kitten mode, deep cleaning, and soft stool mode.

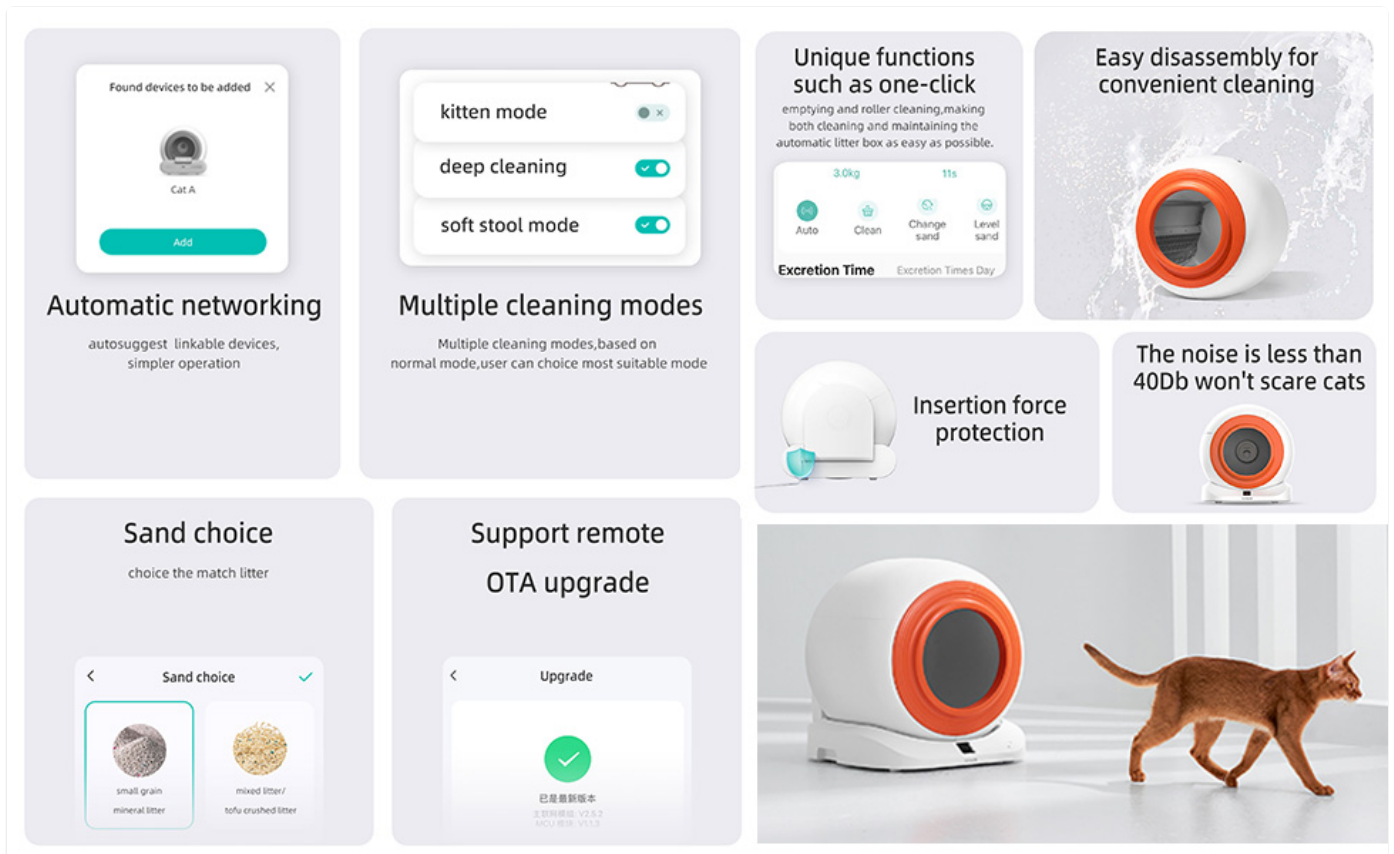


Figure 3: App interface for managing the Placidill 3.0 litter box.

4.2 Manual Control

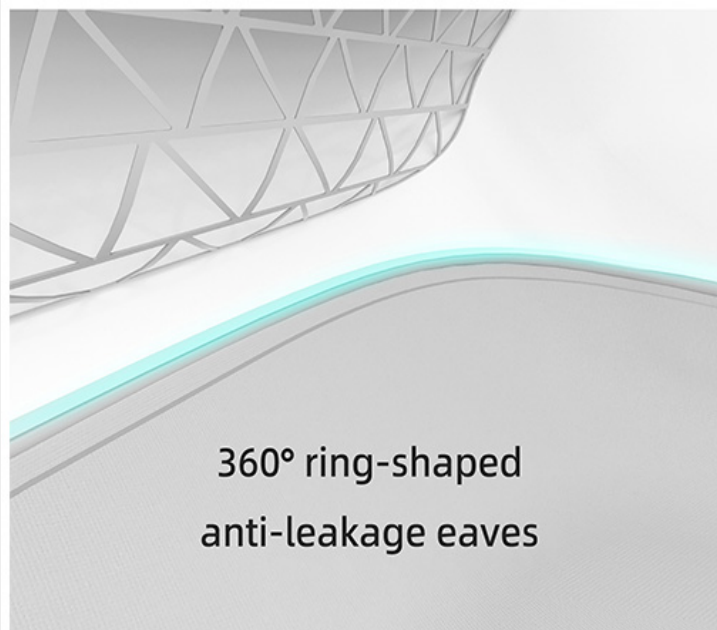
For users preferring direct interaction, the litter box features an integrated screen display and physical buttons for essential functions.

- **Start/Stop Cleaning:** Manually initiate or pause a cleaning cycle.
- **Empty Waste Bin:** Trigger the mechanism to empty the waste into the collection bin.
- **Status Display:** The screen provides real-time information on the device's status.

4.3 Odor Control Device

The integrated odor control device utilizes advanced deodorization technology to reduce unpleasant smells by up to 90%. It operates automatically after cleaning cycles to maintain a fresh environment.

Effectively preventing urine leakage



Air purifier **smart spray**

Deodorizes automatically after cleaning



Figure 4: Automatic deodorization feature with smart spray.

5. LITTER COMPATIBILITY

The Placdill 3.0 Self-Cleaning Litter Box is designed to be compatible with a variety of common cat litter types due to its innovative lightning-shaped filter:

- Plant-based litters
- Bentonite litters
- Clay litters
- Mixed litters
- Tofu crushed litter
- Small grain mineral litter

Note: This litter box is **not compatible** with crystal litter.

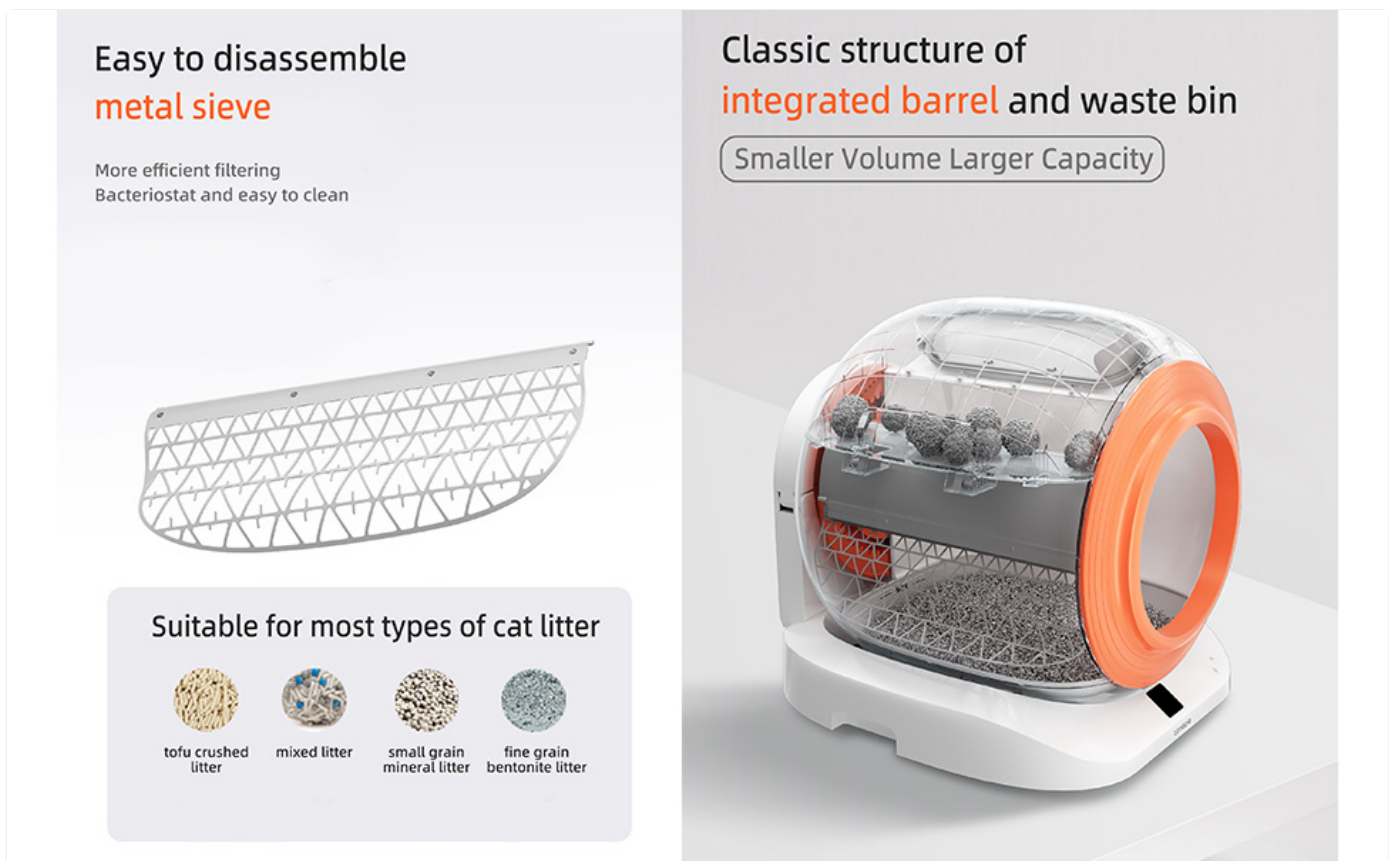


Figure 5: Compatible litter types and the easy-to-disassemble metal sieve.

6. MAINTENANCE

Regular maintenance ensures optimal performance and hygiene of your Placidill 3.0 litter box.

6.1 Emptying the Waste Bin

- The large waste bin allows single-cat households to go up to 15 days without scooping.
- The side-positioned waste container facilitates quick and mess-free replacement of litter bags.
- To replace the bag, open the waste bin compartment, remove the full bag, and insert a new one. Avoid direct contact with used litter.

Automatic closure bin door, preventing litter pile up

Challenge 12days long range



Figure 6: Automatic closure bin door for odor containment.

6.2 Deep Cleaning

The unit is designed for effortless disassembly, making deep cleaning simple and efficient.

1. **Disassembly:** The integrated bucket and drum design can be easily separated from the base for thorough cleaning.
2. **Cleaning Components:** Wash the drum, sieve, and other removable parts with mild soap and water. Ensure all parts are completely dry before reassembly.
3. **Reassembly:** Follow the reverse steps for reassembly. The process is designed to be intuitive.

Effortless disassembly, **Easy to clean,**
Deep cleaning only need 10 mins



Figure 7: Effortless disassembly for deep cleaning.

7. TROUBLESHOOTING

This section addresses common issues you might encounter with your Placdill 3.0 Self-Cleaning Litter Box.

Problem	Possible Cause	Solution
---------	----------------	----------

Problem	Possible Cause	Solution
Unit not cleaning / Stuck in "cat approaching" mode	<p>Cat still inside or near the entrance.</p> <p>Sensors obstructed or dirty.</p> <p>Calibration issue.</p>	<p>Ensure no cat is near the unit.</p> <p>Clean all sensor windows with a soft, dry cloth.</p> <p>Power cycle the unit (unplug, wait 30 seconds, plug back in).</p> <p>Check app for error codes or reset options.</p>
Litter or urine leakage	<p>Improper assembly of drum/bucket.</p> <p>Damage to the integrated bucket/drum.</p>	<p>Ensure the integrated bucket and drum are correctly seated and sealed.</p> <p>Inspect for any cracks or damage. Contact support if damage is found.</p>
Odor persists despite odor control device	<p>Waste bin full or not sealed properly.</p> <p>Odor control device needs replacement or cleaning.</p> <p>Litter type not effectively controlling odor.</p>	<p>Empty the waste bin and ensure the litter bag is properly sealed.</p> <p>Check the odor control device for proper function or replace as needed.</p> <p>Consider using a different compatible litter with stronger odor control properties.</p>
App connectivity issues	<p>Incorrect WiFi password.</p> <p>Not connected to a 2.4G WiFi network.</p> <p>Router too far or signal interference.</p>	<p>Verify WiFi password.</p> <p>Ensure your phone and the litter box are connected to a 2.4G WiFi network.</p> <p>Move the unit closer to the router or reduce interference.</p> <p>Restart your router and the litter box.</p>

8. SPECIFICATIONS

Feature	Detail
Model Number	BDL-TPCBQA01
Brand	Placdill
Manufacturer	KKLLIM
Product Dimensions (L x W x H)	21.7" x 20.3" x 19.9" (55.1 x 51.6 x 50.5 cm)
Item Weight	20.9 pounds (9.5 kg)
Litter Area Capacity	65 Liters
Material	Acrylonitrile Butadiene Styrene (ABS), Plastic
Color	WHITE
Target Audience	House-cats (2.2 lbs to 18 lbs)

Feature	Detail
Connectivity	2.4G WiFi for App Control
Included Components	Automatic Cat Litter Box, Advanced Odor Control Device, Cat Litter Mat, Power Adapter, User Manual

9. WARRANTY AND SUPPORT

Placdill is committed to providing excellent after-sales support for your product.

- **Warranty:** The product comes with a 1-year warranty. Please refer to the warranty card included in your package for specific terms and conditions.
- **Customer Service:** If you encounter any issues such as machine malfunctions, missing accessories, or require technical assistance, please contact our customer service team. We aim to provide prompt and satisfactory solutions.
- **Contact Information:** Refer to the contact details provided in the included user manual or on the official Placdill website for support.



Figure 8: Dedicated customer support available.

