

illumishin 11605black

illumishin Solar Outdoor Motion Sensor Wall Light

MODEL: 11605BLACK

Introduction

This manual provides detailed instructions for the installation, operation, and maintenance of your illumishin Solar Outdoor Motion Sensor Wall Light. Please read this manual thoroughly before installation and retain it for future reference.

The illumishin Solar Outdoor Motion Sensor Wall Light is designed for exterior use, featuring LED dimmable lighting, a rotatable design, and three lighting modes. Constructed from aluminum with an IP65 waterproof rating, it is suitable for various outdoor locations such as porches, patios, gardens, garages, and front doors.

Safety Information

- Ensure the solar panel receives direct sunlight for optimal charging.
- Do not attempt to disassemble or modify the product. This may void the warranty and pose safety risks.
- Keep the product away from open flames or extreme heat sources.
- Install the light securely to prevent it from falling.
- Dispose of batteries according to local regulations.

Package Contents

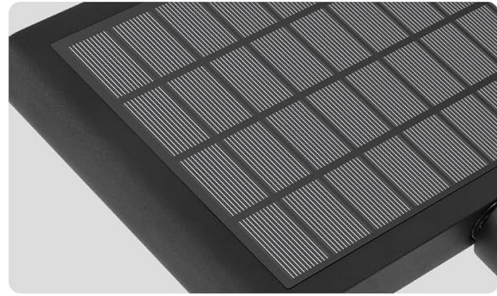
Verify that all components are present before installation:

- 1 x Solar Outdoor Motion Sensor Wall Light
- Mounting Hardware (screws, wall anchors)
- Instruction Manual

Product Features

- **Solar Powered:** High-efficiency solar panel for energy-saving operation.
- **Motion Sensor:** Detects motion up to 32 feet for enhanced security.
- **3 Lighting Modes:** Offers versatile illumination options (Medium Light, Motion Sensor, Dim Light).
- **Adjustable Color Temperature:** Dimmable from 2200K (Warm Light) to 4000K (Natural White Light).
- **Rotatable Design:** Allows adjustment of the light head and solar panel for optimal positioning.
- **Durable Construction:** Made from 100% die-cast aluminum with an IP65 waterproof rating for all-weather resistance.
- **Integrated LED:** Energy-efficient LED light source.

01 Enlarged solar panel



02 100% Die-cast aluminum

03 LED integrated, energy saving



Image: Detailed view of the enlarged solar panel, 100% die-cast aluminum construction, and integrated LED light panel.

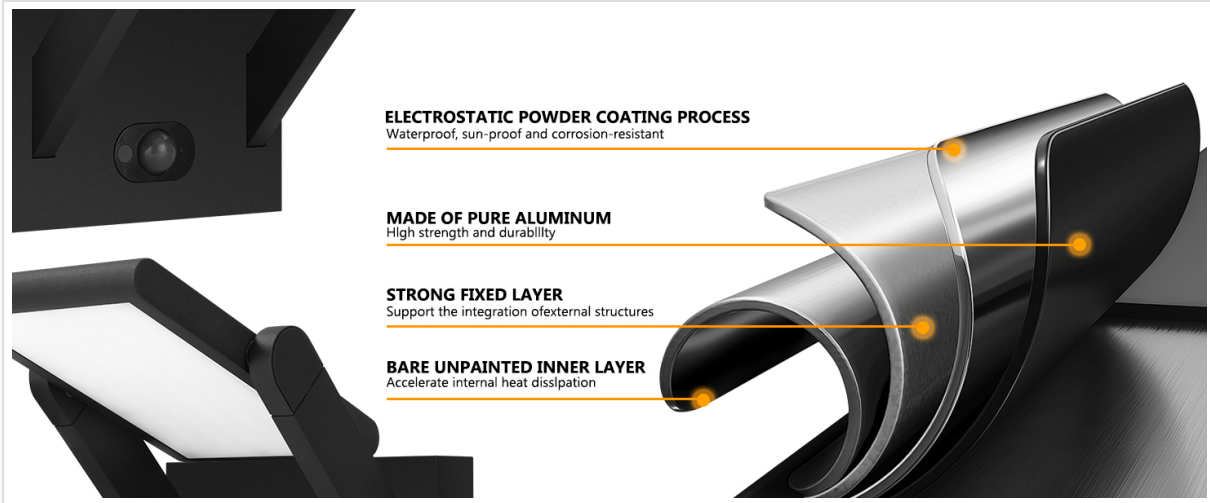


Image: Construction diagram highlighting the electrostatic powder coating, pure aluminum material, strong fixed layer, and unpainted inner layer for heat dissipation.

Installation Guide

Follow these steps for proper installation:

1. **Choose a Location:** Select a location that receives ample direct sunlight throughout the day for optimal solar charging. Ensure the motion sensor has a clear line of sight to the area you wish to monitor.
2. **Remove the Back Panel:** Use the provided wrench from the installation kit to remove the back panel from the main light body.
3. **Install the Back Panel:** Position the back panel on the wall. Mark the drilling points (approximately 145mm horizontally and 100mm vertically between the top two holes). Drill diagonal holes and secure the back panel using the expansion screw set.
4. **Mount the Fixture:** Reattach the screws that were initially removed and secure the light fixture onto the installed back panel using the wrench.
5. **Adjust Solar Panel and Light Head:** Adjust the rotatable solar panel to face the sun directly and position the light head to illuminate the desired area.

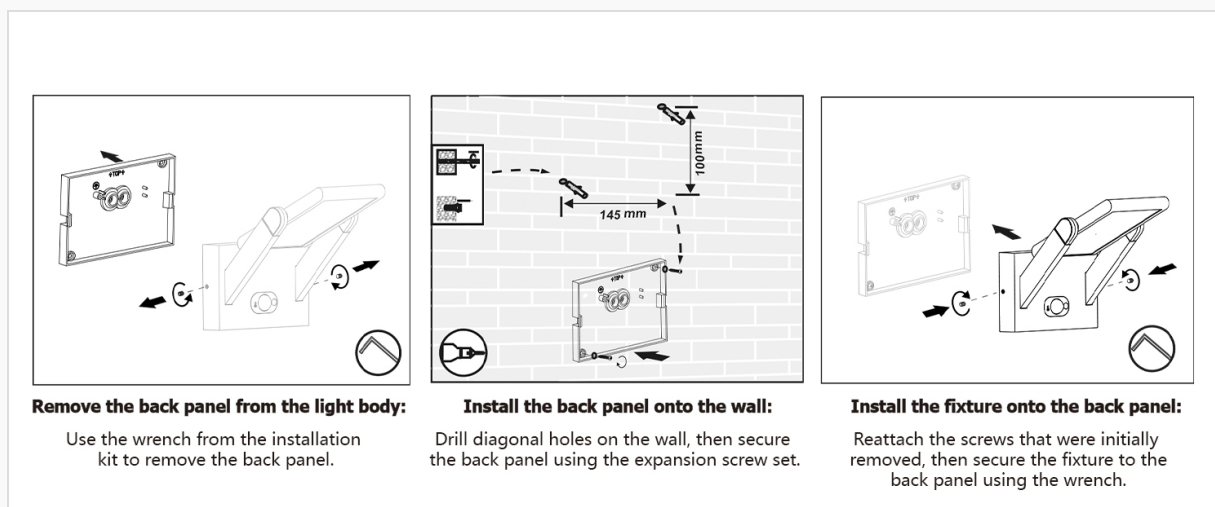


Image: Visual guide for installation, showing how to detach the back panel, mount it to the wall, and then secure the light fixture.

Your browser does not support the video tag.

Video: Demonstrates the 180-degree rotation feature of the solar panel and light head, and shows the motion sensor in

action. This video highlights the adjustability and functionality of the light.

Operating Instructions

The light features a control button for mode selection and color temperature adjustment.

Lighting Modes

Press the control button for 3 seconds to cycle through the following modes:

- **Mode 1: Medium Light Mode**
No motion: 31 lumens. Motion detected: 310 lumens. After 30 seconds: returns to 31 lumens.
- **Mode 2: Motion Sensor Mode**
No motion: No light. Motion detected: 310 lumens. After 30 seconds: No light.
- **Mode 3: Dim Light Mode**
Always on at 124 lumens from dusk to dawn.

3 Lighting Modes

In any case, press for 3 seconds to close


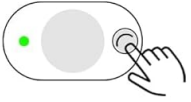

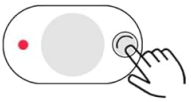

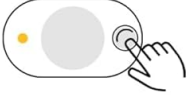
 <p>No motion 31lm Motion detected 310lm After 30s 31lm</p>	<p>Medium Light Mode</p> 
 <p>No motion No light Motion detected 310lm After 30s No Light</p>	<p>Motion Sensor Mode</p> 
 <p>Always on 124lm, dusk to dawn</p>	<p>Dim Light Mode</p> 

Image: Explanation of the three distinct lighting modes and their behavior.



Image: Depiction of the three lighting modes (Medium, Motion Sensor, Dim) in an outdoor environment, illustrating their operational differences.

Adjusting Color Temperature

In any of the 3 lighting modes, long press the control button to adjust the color temperature from 2200K (Warm Light) to 4000K (Natural White Light).

Long press to adjust the color temperature from 2200K to 4000K



In any of the 1-3 modes, long press to adjust the color temperature from 2200K to 4000K.



Image: Instructions for adjusting the light's color temperature between warm (2200K) and natural white (4000K).

Maintenance

- **Solar Panel Cleaning:** Regularly clean the solar panel surface with a soft, damp cloth to remove dust, dirt, or debris. A clean panel ensures efficient charging.
- **Fixture Cleaning:** Wipe the light fixture with a soft, dry cloth to maintain its appearance. Avoid abrasive cleaners.
- **Battery Care:** The integrated lithium-ion batteries are designed for long life. If the light's performance diminishes significantly over time, ensure the solar panel is clean and receiving adequate sunlight.

Troubleshooting

Problem	Possible Cause	Solution
Light does not turn on at night.	Insufficient solar charge.	Ensure the solar panel is in direct sunlight for 6-8 hours daily. Clean the solar panel.
Light is dim or runs for a short duration.	Partial solar charge or aging battery.	Relocate the light to a sunnier spot. Ensure the solar panel is clean.
Motion sensor not detecting movement.	Sensor obstructed or incorrect mode.	Clear any obstructions from the sensor. Ensure the light is in Motion Sensor Mode (Mode 2) or Medium Light Mode (Mode 1).
Light flickers or behaves erratically.	Low battery or internal issue.	Allow for a full day of charging. If the problem persists, contact customer support.

Specifications

2600mAh
Battery capacity

31-310Lm
Lumen

7.4V
Voltage

3000K
Brightness

IP65
Waterproof

2.8W
Power

Product Dimensions

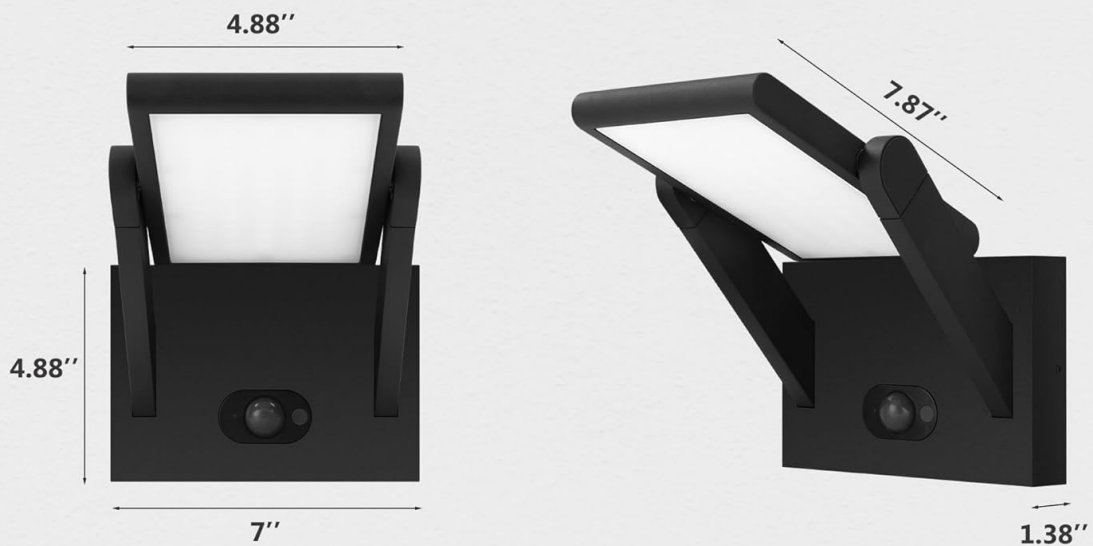


Image: Detailed product dimensions for installation planning.

Feature	Detail
Brand	illumishin
Model Name	solar outdoor wall light
Model Number	11605black
Color	Black
Material	Aluminum
Product Dimensions (L x W x H)	9.33" x 7.17" x 7.05"
Item Weight	1.83 Pounds
Power Source	Solar Powered
Light Source Type	LED

Feature	Detail
Brightness	310 Lumens (Max Output)
Color Temperature	Adjustable from 2200K to 4000K
Voltage	7.4 Volts
Wattage	2.8 watts
Water Resistance Level	IP65 Waterproof
Batteries	2 Lithium Ion batteries required (included)
Special Features	Adjustable Height, Anti-Rust, Energy Efficient, Motion Sensor, Solar power

Warranty and Support

This product is typically covered by a manufacturer's warranty. Please refer to your purchase documentation or contact the seller directly for specific warranty terms and conditions.

For technical support or inquiries, please contact the seller, US_inowel, through the platform where the product was purchased.