

## Edifier NeoBuds Plus

# Edifier NeoBuds Plus User Manual

Model: NeoBuds Plus

## INTRODUCTION

---

This manual provides detailed instructions for the setup, operation, maintenance, and troubleshooting of your Edifier NeoBuds Plus active noise cancelling earbuds. Please read this manual thoroughly before using the product to ensure optimal performance and longevity.

## WHAT'S IN THE BOX

---

- Edifier NeoBuds Plus Earbuds (1 pair)
- Charging Case (1)
- Ear Tips (7 sets: XXS/XS/S/M/L/XL/XXL)
- Charging Cable (1)
- Pouch (1)
- User Manual (this document)



Image: The Edifier NeoBuds Plus earbuds are shown inside their open charging case, with one earbud also displayed separately. The black earbuds and case have a sleek, modern design.

## PRODUCT OVERVIEW

---

The Edifier NeoBuds Plus feature a compact design with advanced audio components. Each earbud is equipped with a 10mm dynamic driver and a Knowles balanced armature driver for a balanced sound profile. The charging case provides extended battery life and supports wireless charging.

# Rich, Clear, and Powerful Sound

10mm  
Dynamic Driver

Balanced  
Armature Driver

# 10mm

Image: A cutaway diagram illustrates the internal structure of an Edifier NeoBuds Plus earbud, highlighting the 10mm Dynamic Driver and the Balanced Armature Driver, which work together to produce high-quality audio.

## SETUP

---

### 1. Initial Charging

Before first use, fully charge the NeoBuds Plus and their charging case. Connect the charging cable to the USB-C port on the case, or place the case on a compatible wireless charging pad. A 15-minute charge provides approximately 4 hours of playtime.

# Extended Battery Life



Fast Charging: **15min=4H** ANC OFF: **47H** ANC ON: **34H**

Image: The Edifier NeoBuds Plus charging case is shown resting on a wireless charging pad, indicating its wireless charging capability. The earbuds are inside the open case, and text highlights the 47-hour total battery life with ANC off.

## 2. Pairing

The NeoBuds Plus support Bluetooth 5.4 for stable connections and Google Fast Pair for quick setup with Android devices. They also feature multipoint connection, allowing simultaneous connection to two devices.

1. Open the charging case. The earbuds will automatically enter pairing mode.
2. On your device (smartphone, laptop, tablet), enable Bluetooth and select "Edifier NeoBuds Plus" from the list of available devices.
3. For Google Fast Pair, simply open the case near a compatible Android device and follow the on-screen prompts.

# Multipoint Connection & Google Fast Pair



Image: A smartphone displaying the Edifier Connect app and a laptop showing activity data are positioned next to the open Edifier NeoBuds Plus charging case, illustrating the multipoint connection and Google Fast Pair features.

## 3. Ear Tip Selection

Choose the ear tips that provide the best seal and comfort for your ears. A proper fit is crucial for optimal sound quality and noise cancellation. Seven different sizes (XXS to XXL) are included to ensure a secure and comfortable fit.

## OPERATING INSTRUCTIONS

### Controls

The NeoBuds Plus can be controlled via the Edifier Connect App, push buttons on the earbuds, or voice commands. The push buttons offer customizable functions for playback, call management, and noise control.

- **Single Tap:** Typically for play/pause.
- **Double Tap:** Customizable (e.g., next track, answer/end call).
- **Triple Tap:** Customizable (e.g., previous track, activate voice assistant).
- **Tap and Hold:** Customizable (e.g., switch ANC modes).

Refer to the Edifier Connect App for full customization options and detailed control settings.

## Active Noise Cancellation (ANC)

The NeoBuds Plus feature hybrid ANC with up to -48dB noise reduction. Various modes are available to adapt to your environment:

- **High Noise Cancellation:** For maximum noise reduction in very noisy environments (e.g., airplanes, trains).
- **Medium Noise Cancellation:** Suitable for moderately noisy environments (e.g., offices, cafes).
- **Low Noise Cancellation:** For subtle noise reduction.
- **Ambient Sound Mode:** Allows you to hear your surroundings without removing the earbuds.
- **Wind Reduction:** Minimizes wind noise during outdoor activities.



# Noise-Canceling for Clearer Listening Anywhere

**-48dB**



High noise  
cancellation



Low noise  
cancellation



Medium noise  
cancellation



Wind reduction



Ambient sound

Image: A woman is depicted using her smartphone while wearing Edifier NeoBuds Plus earbuds, with an overlay illustrating the -48dB noise cancellation capability. Icons below depict various noise cancellation modes: High, Low, Medium, Wind Reduction, and Ambient Sound, demonstrating adaptability to different environments.

## High-Fidelity Audio

Experience superior sound quality with Hi-Res Audio Wireless certification. The NeoBuds Plus support LHDC5.0, LDAC, and AAC codecs, delivering near-lossless 24bit/192kHz audio at up to 990kbps for exceptional detail and clarity.

# Immersive High-Resolution Sound



LHDC192

LHDCX

Image: A woman is shown wearing the Edifier NeoBuds Plus earbuds, with visual cues indicating immersive high-resolution sound. Logos for Hi-Res Audio Wireless, LDAC, LHDC192, and LHDCX are displayed, signifying support for advanced audio codecs.

## Call Functions

Each earbud is equipped with three microphones and AI voice pickup technology, totaling six microphones for clear hands-free calls. This system ensures your voice is transmitted clearly, even in challenging conditions like winds up to 25km/h.



# 6 Mics for Clear Calls

AI voice pick-up technology with 3 beamforming mics per earbud ensures clear hands-free calls.

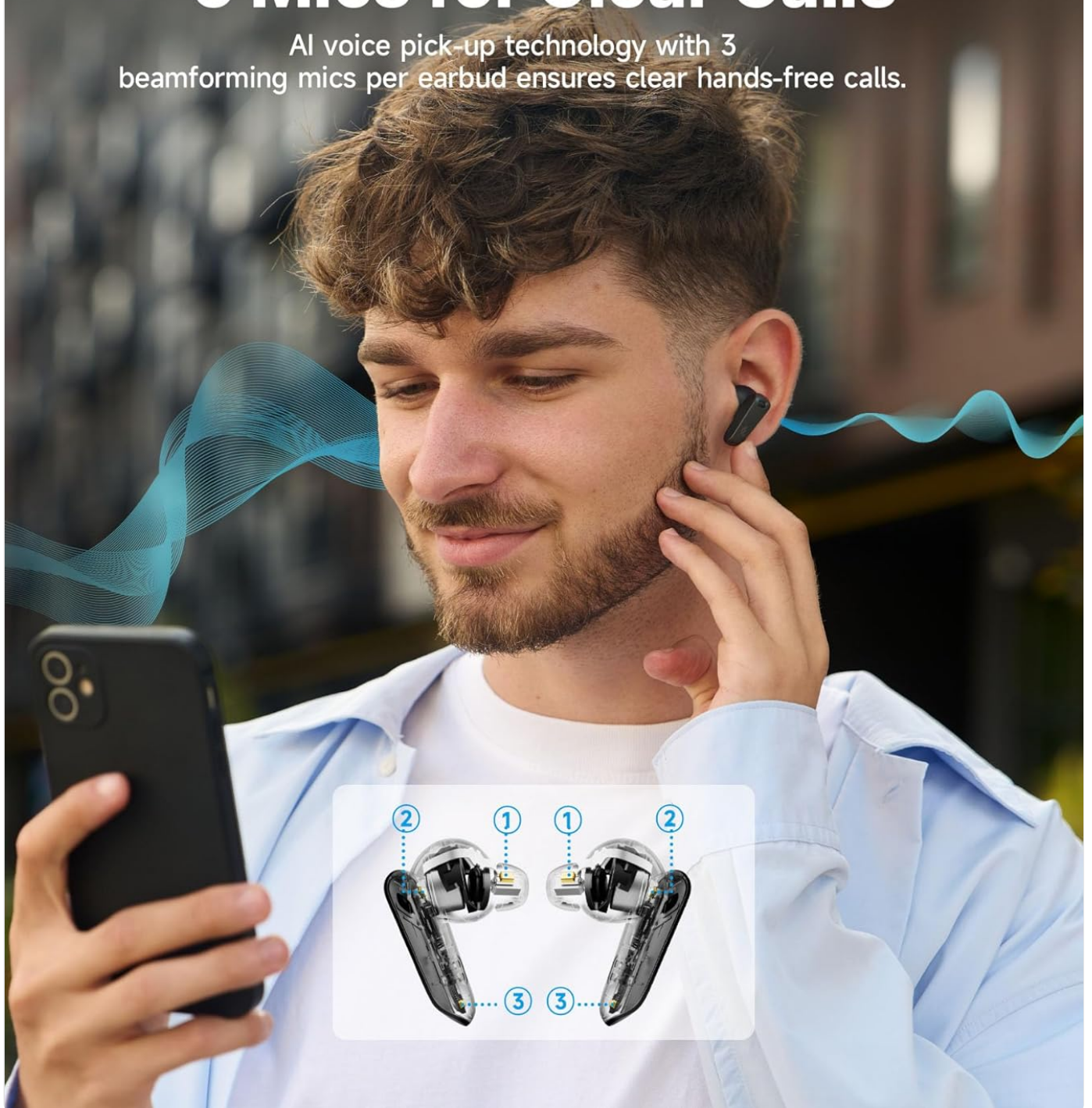


Image: A man is depicted using his smartphone while wearing Edifier NeoBuds Plus earbuds. An inset diagram highlights the location of the six microphones (three per earbud) used for AI voice pickup, ensuring clear call quality.

## Intelligent Start-Stop

The earbuds feature wear sensors that automatically pause audio when removed from your ears and resume playback when reinserted, ensuring you never miss a beat.

## MAINTENANCE

---

### Cleaning

Regularly clean your earbuds and charging case with a soft, dry cloth. For ear tips, remove them from the earbuds and

clean with mild soap and water, then dry thoroughly before reattaching. Avoid using harsh chemicals or abrasive materials.

### Battery Life & Charging

The NeoBuds Plus offer up to 47 hours of total playtime with ANC off (earbuds + charging case). With ANC on, you can expect up to 34 hours. The case supports both USB-C wired charging and convenient wireless charging.

### Water Resistance

The earbuds are rated IP54 for dust and water resistance, making them suitable for light splashes and sweat. They are not designed for submersion in water.

## TROUBLESHOOTING

Problem	Possible Cause	Solution
Earbuds do not power on.	Low battery.	Place earbuds in the charging case and charge fully.
Cannot pair with device.	Earbuds not in pairing mode; Bluetooth off on device; device too far.	Open case to enter pairing mode. Ensure device Bluetooth is on. Move device closer to earbuds.
No sound or low volume.	Volume too low; improper ear tip fit; earbud obstruction.	Adjust volume on device. Ensure ear tips provide a good seal. Clean earbud mesh if obstructed.
ANC not effective.	Improper ear tip fit; incorrect ANC mode selected.	Ensure ear tips provide a tight seal. Switch to High Noise Cancellation mode via the app or earbud controls.
Call quality is poor.	Microphone obstruction; environmental noise.	Ensure microphones are not covered. Move to a quieter environment if possible.

## SPECIFICATIONS

- Model Name:** NeoBuds Plus
- Connectivity Technology:** Wireless (Bluetooth 5.4)
- Audio Driver Type:** Hybrid Driver (Knowles balanced armature + 10mm dynamic)
- Noise Control:** Active Noise Cancellation (-48dB Hybrid ANC)
- Battery Life:** Up to 47 hours (ANC off with case)
- Charging Time:** 15 minutes for 4 hours playtime
- Microphones:** 6 (3 per earbud with AI voice pickup)
- Water Resistance:** IP54
- Supported Audio Codecs:** LHDC5.0, LDAC, AAC
- Bluetooth Range:** 10 Meters
- Control Method:** App, Push Button, Voice
- Frequency Range:** 20Hz - 40kHz
- Item Weight:** 10.8 ounces

## OFFICIAL PRODUCT VIDEO

Your browser does not support the video tag.

Video: An official product video from Edifier showcasing the key features and design of the NeoBuds Plus earbuds, including their active noise cancellation, sound quality, and battery life.

## WARRANTY AND SUPPORT

Edifier products are designed and manufactured to the highest quality standards. For warranty information, technical support, or service inquiries, please visit the official Edifier website or contact their customer support directly. Keep your purchase receipt as proof of purchase for warranty claims.

Official Edifier Store: [Edifier Store on Amazon](#)

© 2025 Edifier. All rights reserved.

### Related Documents - NeoBuds Plus

--	--



## NeoBuds Planar

True Wireless Stereo / Ergonomic Noise Cancelling Earbuds

Manual

### EN 1. Power ON/OFF



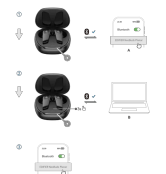
### 2. First pairing



### 3. Pairing for new device



### 4. Multipoint connection



### 5. Reset/LightBright Connection



### 6. Charging



### 7. Controls



## NeoBuds Pro

True Wireless Stereo Earbuds with Active Noise Cancellation

### 1. Product description and accessories



Accessories: Ear tips x 7 pairs, Storage bag x 1, Charging cable x 1.

Note:

- There are different size of ear tips attached in the package, please select the suitable one for your ears.
- The earbuds are not waterproof and may be damaged by water or other liquids.
- Due to the need of technical improvements and system upgrades, information and specifications contained herein may be slightly different from actual.



product. If any difference is found, it's the actual product controls.

## 2. Power on/off

- The earbuds will power on when the case is opened.
- The earbuds will power off when placed in the case and the case is closed.



## 3. Charge

- Charge the earbuds**
  - Place the earbuds in the case and close the case for charging.
- Charge the charging case**
  - Connect the earbuds to the case with the included charging cable for charging.
  - When the case is being charged, the indicator will be on (orange light). When the case is fully charged, the indicator will be off (no light).
- Battery level indicator on the charging case**
  - Open the charging case and the indicator will show the battery level. The indicator will be on (orange light) when the battery level is low and off (no light) when the battery level is full.
- Low battery level of the charging case**
  - When the battery level of the charging case is low, the indicator will be on (orange light) and the indicator will be on (orange light) when the battery level is low. When the battery level is low, the indicator will be on (orange light) and the indicator will be on (orange light) when the battery level is low.



**Warning:**

- Do not use the earbuds for a long time without charging. Do not use the earbuds for a long time without charging.
- Do not use the earbuds for a long time without charging. Do not use the earbuds for a long time without charging.

## 4. User guide

### Bluetooth connection



- The earbuds will be in the case and the indicator will be on (orange light) when the earbuds are in the case and the indicator will be on (orange light) when the earbuds are in the case.
- The earbuds will be in the case and the indicator will be on (orange light) when the earbuds are in the case and the indicator will be on (orange light) when the earbuds are in the case.

- Pairing of the left and right earbuds is clear pairing mode**
  - Place the earbuds in the case. The indicator will be on (orange light) when the earbuds are in the case and the indicator will be on (orange light) when the earbuds are in the case.

**Note:**

- Do not use the earbuds for a long time without charging. Do not use the earbuds for a long time without charging.

### Functional operation



- Answer/hold a call:** Double-click the left or right earbud.
- Make a call:** Double-click the left earbud.
- Game mode on/off:** Triple-click the left earbud.
- Pause/play:** Double-click the right earbud.
- Next track:** Triple-click the right earbud.

**Note:**

- Do not use the earbuds for a long time without charging. Do not use the earbuds for a long time without charging.

### Tap



**Operating method: Tap! Tap! Tap!**

- The right earbud is tap. The earbud will be on (orange light) when the earbud is in the case and the indicator will be on (orange light) when the earbud is in the case.



- Double-click the left earbud:** Answer/hold a call, make a call, game mode.
- Double-click the right earbud:** Answer/hold a call, pause/play, next track.

## 5. FAQs

- When charging the charging case, the indicator is off.**
  - Please check if the charging case is correctly connected with power supply.
- No sound.**
  - Check if the earbuds are on.
  - Check if the earbuds are on the correct side.
  - Check if the earbuds are on the correct side.
- The call quality of the earbuds is not good.**
  - Check if the earbuds are on the correct side.
  - Check if the earbuds are on the correct side.
- When playing music, cannot control pause/play/next track or the earbuds.**
  - Check if the earbuds are on the correct side.
  - Check if the earbuds are on the correct side.
- The tapping function is too sensitive or not sensitive.**
  - Check if the earbuds are on the correct side.
  - Check if the earbuds are on the correct side.
- After one earbud is connected to another mobile phone, there is no sound from the other earbud when used again.**
  - Check if the earbuds are on the correct side.
  - Check if the earbuds are on the correct side.
- There is a delay problem when playing game.**
  - Check if the earbuds are on the correct side.
  - Check if the earbuds are on the correct side.

## 6. Maintenance

**Note:**

- Do not use the earbuds for a long time without charging. Do not use the earbuds for a long time without charging.

# Edifier NeoBuds Pro: True Wireless Stereo Earbuds with Active Noise Cancellation - User Manual

## Comprehensive user manual for the Edifier NeoBuds Pro True Wireless Stereo Earbuds. Learn about setup, active noise cancellation, Bluetooth pairing, touch controls, charging, FAQs, and maintenance for optimal performance.



## NeoBuds Pro

True Wireless Stereo Earbuds with Active Noise Cancellation

— Manual —

### EN 1. Power ON/OFF



1. Insert the earbud into the charging case.



2. Remove the earbud from the charging case.

### 2. Pairing



1. Power on the earbud.  
2. Press and hold the touch sensor for 5 seconds until the LED indicator flashes red and blue.  
3. Press and hold the touch sensor for 5 seconds until the LED indicator flashes red and blue.  
4. Press and hold the touch sensor for 5 seconds until the LED indicator flashes red and blue.

### 3. Reset Left & Right connection



1. Power on the earbud.  
2. Press and hold the touch sensor for 5 seconds until the LED indicator flashes red and blue.  
3. Press and hold the touch sensor for 5 seconds until the LED indicator flashes red and blue.  
4. Press and hold the touch sensor for 5 seconds until the LED indicator flashes red and blue.

### 4. Controls



Left earbud: Touch sensor  
Right earbud: Touch sensor

Touch sensor: 1. Play/Pause, 2. Previous, 3. Next, 4. Voice Assistant, 5. Power On/Off

Note: 1. Press and hold the touch sensor for 5 seconds to power on the earbud.  
2. Press and hold the touch sensor for 5 seconds to power off the earbud.  
3. Press and hold the touch sensor for 5 seconds to reset the earbud.

For more information, please visit our website:

[edifier.com](#)

[edifier.com](#) [edifier.com](#) [edifier.com](#)

Model: E1000

© 2023 Edifier Inc.

All rights reserved.

Edifier Inc.

Edifier Inc.

Edifier Inc.

Edifier Inc.

Edifier Inc.

Edifier Inc.

Edifier Inc.

Edifier Inc.

Edifier Inc.

Edifier Inc.

Edifier Inc.

Edifier Inc.

Edifier Inc.

Edifier Inc.

Edifier Inc.

Edifier Inc.

Edifier Inc.

Edifier Inc.

Edifier Inc.

Edifier Inc.

Edifier Inc.

Edifier Inc.

Edifier Inc.

Edifier Inc.

Edifier Inc.

Edifier Inc.

Edifier Inc.

Edifier Inc.

Edifier Inc.

Edifier Inc.

Edifier Inc.

Edifier Inc.

Edifier Inc.

Edifier Inc.

Edifier Inc.

Edifier Inc.

Edifier Inc.

Edifier Inc.

Edifier Inc.

Edifier Inc.

Edifier Inc.

Edifier Inc.

Edifier Inc.

Edifier Inc.

Edifier Inc.

Edifier Inc.

Edifier Inc.

Edifier Inc.

Edifier Inc.

Edifier Inc.

Edifier Inc.

Edifier Inc.

Edifier Inc.

Edifier Inc.

Edifier Inc.

Edifier Inc.

Edifier Inc.

Edifier Inc.

Edifier Inc.

Edifier Inc.

Edifier Inc.

Edifier Inc.

Edifier Inc.

Edifier Inc.

Edifier Inc.

Edifier Inc.

Edifier Inc.

Edifier Inc.

Edifier Inc.

Edifier Inc.

Edifier Inc.

Edifier Inc.

Edifier Inc.

Edifier Inc.

Edifier Inc.

Edifier Inc.

Edifier Inc.

Edifier Inc.

Edifier Inc.

Edifier Inc.

Edifier Inc.

Edifier Inc.

Edifier Inc.

Edifier Inc.

Edifier Inc.

Edifier Inc.

Edifier Inc.

Edifier Inc.

Edifier Inc.

Edifier Inc.

Edifier Inc.

Edifier Inc.

Edifier Inc.

Edifier Inc.

## Edifier NeoBuds Pro User Manual: Setup, Pairing, and Controls

Comprehensive user manual for Edifier NeoBuds Pro True Wireless Stereo Earbuds with Active Noise Cancellation. Learn how to power on/off, pair, reset, and control your earbuds.



## NeoBuds Pro 2

True Wireless Noise Cancellation Earbuds

— Manual —



### EN 1. Power ON/OFF



1. Power ON when the case is opened.
2. Power OFF when placed in the case and the case is closed.

**Note:**  
If there is no Bluetooth connection for 2 hours after powered on, the earbuds will power off automatically.

### 2. Pairing



- Pairing for the first time**
1. Earbuds placed in the case and keep the case open. LEDs will be lit and will flash red to indicate the pairing status.
  2. Select "Edifier NeoBuds Pro 2" in the Bluetooth device settings to connect. LEDs will turn blue and then turn off when successfully connected.

- Pairing for new device**
1. Remove the earbuds from the case and keep the case open.
  2. Press and hold the buttons on the case for about 5s. LEDs will be lit and will flash red to indicate the pairing status.
  3. Select "Edifier NeoBuds Pro 2" in Bluetooth device settings to connect. LEDs will blink twice and then turn off when successfully connected.

**Fast Pair (Phone with Android & iOS)**  
Simply charge the case and bring the case next to the smartphone. When the phone is unlocked and the case is open, the phone will display a notification when the pop-up window appears to connect effectively.

**Note:**  
For subsequent use, the earbuds will automatically connect to the device used last time.

### 3. Reset

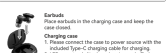


1. Earbuds placed in the case and keep the case open.
2. Press the button on the case 5 times to enter the factory mode and clear all the pairing. LEDs will flash red and blue twice when successfully reset.
3. Select "Edifier NeoBuds Pro 2" in Bluetooth device settings to connect. LEDs will blink twice and then turn off when successfully connected.

### 4. Auto-pause music

Remove one or both earbuds while listening to music, the music will automatically pause to resume the music, and the earbuds will resume playback when they are placed back in the case. This function can be disabled or configured in "listening detection" settings in Edifier Connect App.

### 5. Charging



- Earbuds**  
Place earbuds in the charging case and keep the case closed.
- Charging case**  
1. Fully connect the case to power source with the USB cable or C-Charging cable for charging.  
2. LEDs are lit when charging and off when fully charged.

**Note:**  
Please do not charge the earbuds when there is power or other noise inside the charging port, which may damage the earbuds.

Power (2-in-1 USB-C/USB-A)  
Power (2-in-1 USB-C/USB-A)

### 6. Controls



- Note:**
1. Default sound control: high noise cancellation/ambient sound.
  2. Default sound mode: music mode/game mode/sports mode.
  3. Images are for illustrative purposes only and may differ from the actual product.
  4. Connect Edifier Connect App for more customizable control settings.

For more information, please visit our website:

[www.edifier.com](http://www.edifier.com)



Model: EP20113  
Edifier International Limited  
F.O. Box 4244  
Central Post Office  
Hong Kong

© 2023 Edifier International Limited. All rights reserved.  
Printed in China

**NOTICE:**  
For the best of technical improvement and system upgrade, Edifier International Limited may be subject to design and specification changes without prior notice.  
Features and specifications are subject to change without notice.  
Please refer to the product shown in the manual for the details.  
Different from actual product. If any difference is found, the actual product prevails.

## Edifier NeoBuds Pro 2 User Manual and Guide

Comprehensive user manual for the Edifier NeoBuds Pro 2, covering power on/off, pairing, reset, music pause, charging, and controls.



## TWS NBQ

True Wireless Earbuds with Active Noise Cancellation

## Edifier TWS NBQ True Wireless Earbuds with Active Noise Cancellation User Manual

User manual for Edifier TWS NBQ True Wireless Earbuds with Active Noise Cancellation, covering product description, accessories, charging, pairing, operation, FAQs, and maintenance.



## NeoBuds Pro 3

True Wireless Noise Cancelling Earbuds

Manual



### EN 1. Power ON/OFF



Open or close the case to power on/off

### 2. First pairing



1. Once powered on, the earbuds will automatically enter Bluetooth pairing mode. LEDs will flash red and blue to indicate they are in pairing mode.
2. Select "EDIFIER NeoBuds Pro 3" from your device list to connect.

### 3. Pairing for new device



1. Place the earbuds in the case and keep it open.
2. Press and hold the button on the case 5 times. LEDs will flash red and blue to indicate they are in pairing mode.
3. Select "EDIFIER NeoBuds Pro 3" from your device list to connect.

### 4. Multipoint connection



1. Pair the earbuds with the first device manually and keep the earbuds in the case.
2. For the second device, press and hold the button on the case 5 times. LEDs will flash red and blue to indicate they are in pairing mode.
3. Select "EDIFIER NeoBuds Pro 3" from your device list to connect.

### 5. Reset/Left & Right Connection



1. Place the earbuds in the case and keep it open.
2. Press the button on the case 5 times. LEDs will flash red and blue to indicate they are in pairing mode.

### 6. Charging



Use the included USB-C cable to connect to a power source for charging. Note: 1. Do not use the USB-C port to charge the earbuds. 2. Do not use the USB-C port to charge the earbuds.

### 7. Controls

#### • Call



#### • Music



#### • Mode



Note:  
1. "C" Press, "V" Double press, "X" Triple press, "Y" Press and hold.  
2. Double press to enter the next control mode.  
3. Download EDIFIER Connect App to customize more control settings.

EN 18031-2  
Built-in microphones for hands-free telephone calls.  
Built-in infrared proximity sensor for wearing detection.

## Edifier NeoBuds Pro 3 True Wireless Noise Cancelling Earbuds User Manual

Comprehensive user manual for the Edifier NeoBuds Pro 3 True Wireless Noise Cancelling Earbuds, covering setup, pairing, multipoint connection, controls, charging, and troubleshooting.