

## Dioche Diocheghea1iv675-5S

# Dioche S1 Fingerprint Smart Door Lock User Manual

Model: Diocheghea1iv675-5S

## 1. INTRODUCTION

---

The Dioche S1 Fingerprint Smart Door Lock provides advanced security and convenient access for your home or office. This smart lock integrates multiple unlocking methods including fingerprint recognition, IC card, mobile application (Tuya APP), and traditional mechanical keys. Designed for durability with aluminum alloy and brass, it offers reliable performance and enhanced security features such as automatic locking and emergency power options.

## 2. PACKAGE CONTENTS

---

Before installation, please verify that all components are present in the package:

- Door Lock x 1
- Keycard x 2
- Manual Key x 2
- Sucker x 2
- Wrench x 1
- Manual x 1 (This document)

## 3. PRODUCT OVERVIEW

---

Familiarize yourself with the components of your Dioche S1 Smart Door Lock.



**Image:** Labeled diagram of the smart door lock, showing the lock knob, fingerprint reader, card sensing area, emergency key, and USB charging port.

The lock features a fingerprint reader, an IC card sensing area, a lock knob, an emergency key slot, and a Type-C USB charging port for emergency power.



**Image:** Overview of the S1 Keyless Smart Cylinder features, including Tuya BLE Version, Fingerprint Unlocking, Mechanical Key, IC/NFC, Adjustable Cylinder, Emergency Power Supply, Waterproof, High Security Cylinder, Automatic Locking, and Easy Maintenance.

Key features include Tuya BLE connectivity, multiple unlocking methods, an adjustable cylinder for various door thicknesses, emergency power, waterproof design, and automatic locking.

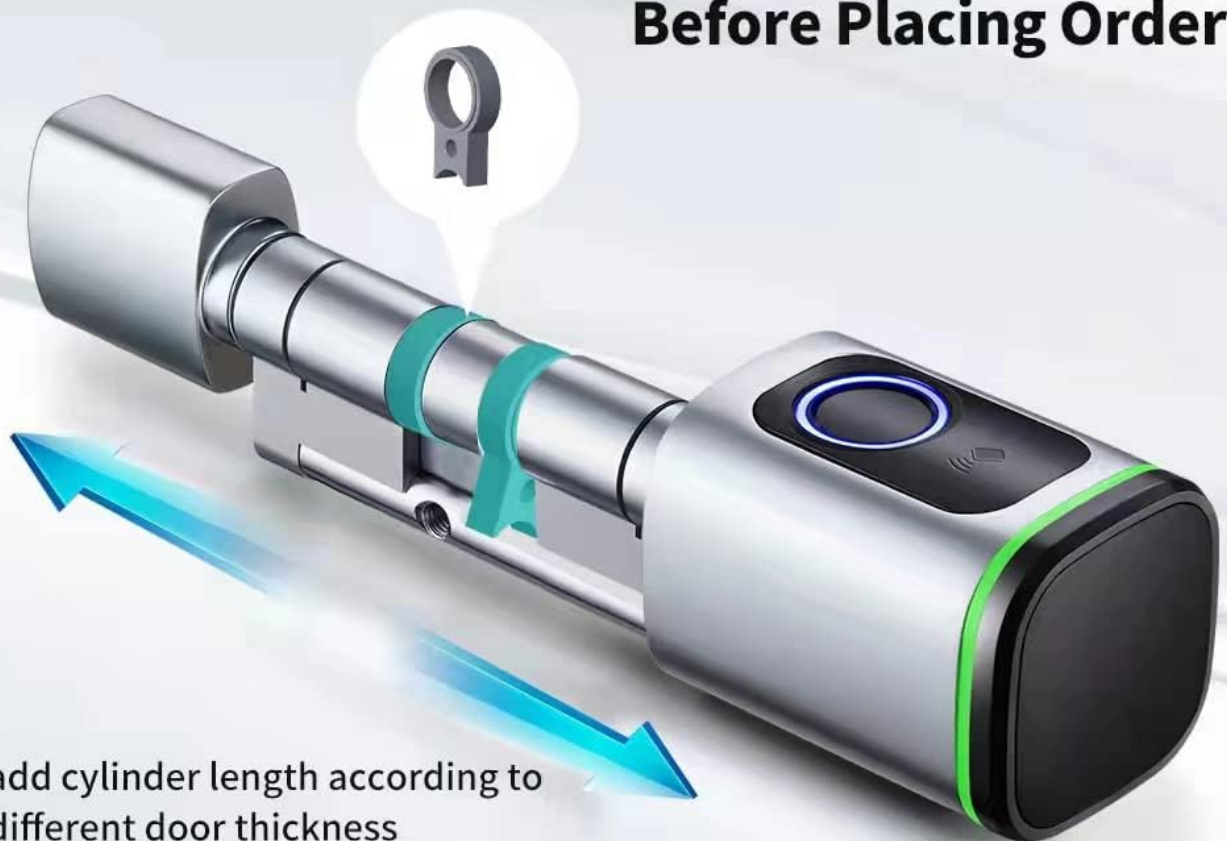
## 4. INSTALLATION

This section provides general guidance for installing the Dioche S1 Smart Door Lock. Professional installation is recommended if you are unfamiliar with door hardware installation.

### 4.1. Door Thickness Compatibility

The lock is designed for doors with a thickness between 35mm and 50mm. Ensure your door falls within this range. The cylinder length can be adjusted using the provided components to fit different door thicknesses.

## Pls Check Cylinder Length Before Placing Order

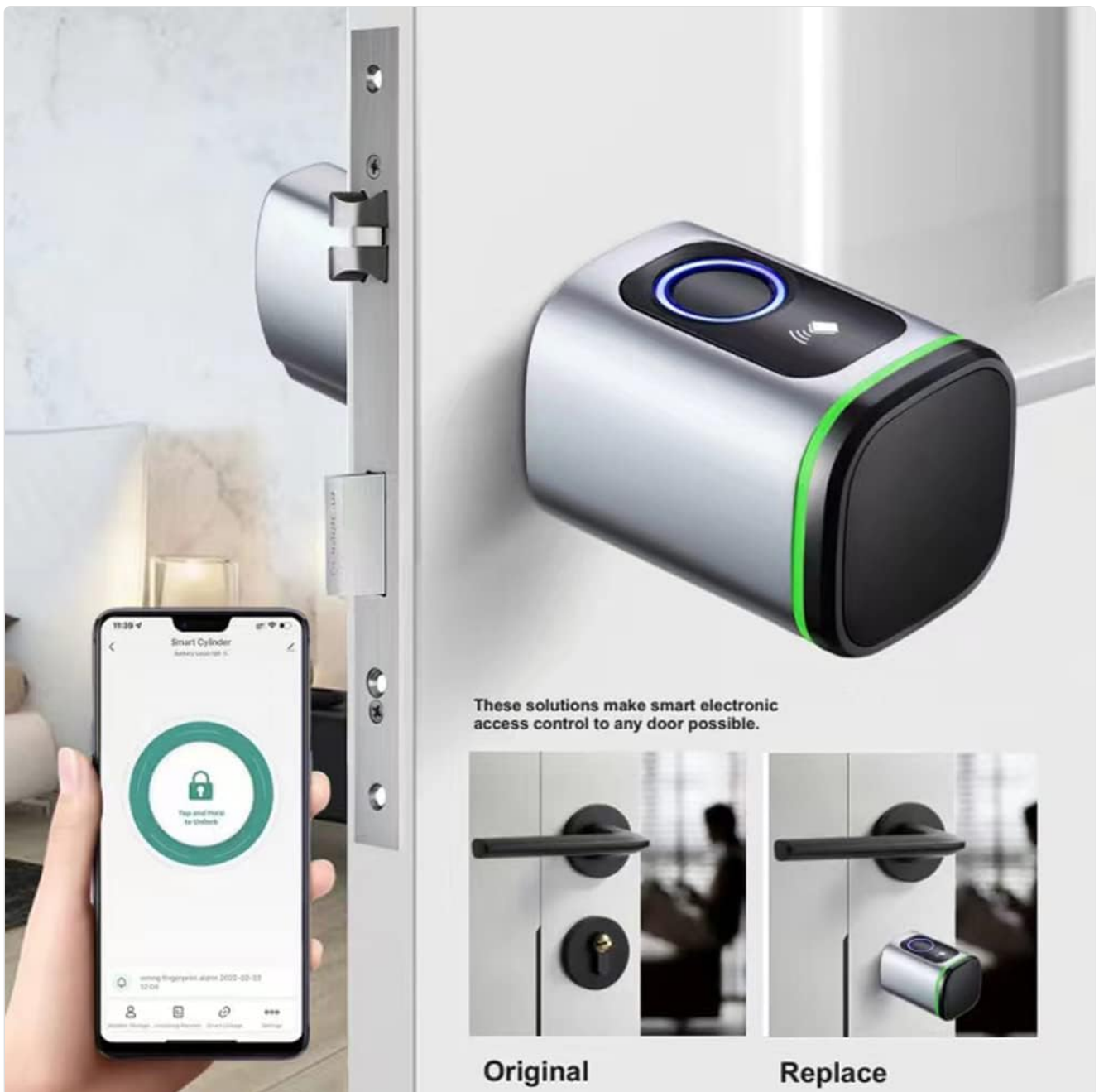


**Image:** Diagram illustrating how to check and adjust the cylinder length using various spacers (5mm, 10mm, 20mm) to accommodate different door thicknesses, showing standard and customized cylinder beams.

### 4.2. Replacing an Existing Lock

The Dioche S1 Smart Door Lock is designed to replace most standard door knobs or cylinders. Follow these general steps:

1. Remove your existing door knob or cylinder.
2. Insert the new smart cylinder into the door.
3. Secure the internal and external components according to the detailed instructions in the included printed manual.
4. Ensure the lock operates smoothly before closing the door.



**Image:** A visual comparison showing an original door lock with a traditional keyhole and handle, next to the Dioche S1 Smart Door Lock installed as a replacement, demonstrating its compact design.

### 4.3. Installation Video Guide

For a visual guide on the installation process, please refer to the video below:

Your browser does not support the video tag.

**Video:** An official product video demonstrating the features and potentially the installation of the Dioche S1 Smart Door Lock. This video provides a visual overview of the product's functionality and design.

## 5. SETUP AND CONFIGURATION

After installation, configure your smart lock for various unlocking methods.

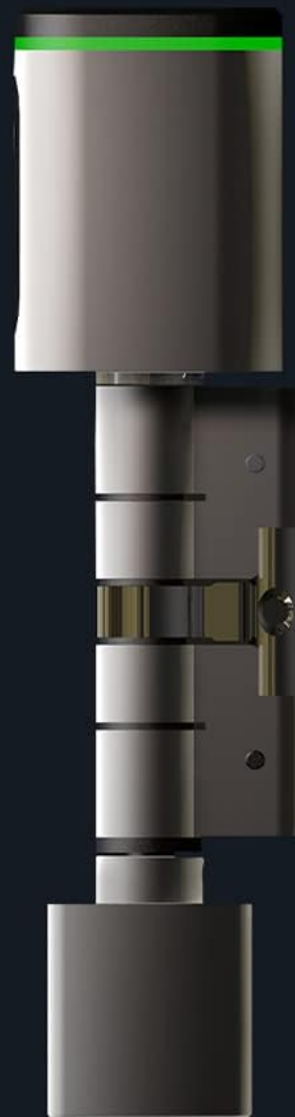
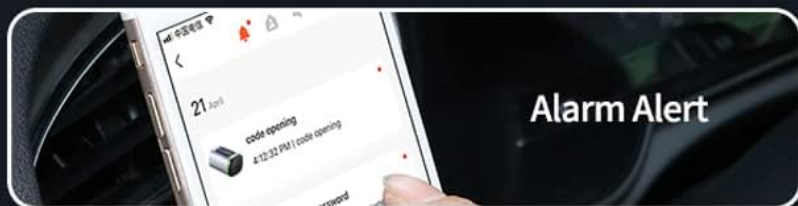
### 5.1. Tuya APP Setup

The Dioche S1 Smart Door Lock integrates with the Tuya APP for remote management and advanced features.

1. Download the Tuya Smart APP from your device's app store.
2. Register or log in to your Tuya account.
3. Follow the in-app instructions to add your Dioche S1 Smart Door Lock. Ensure Bluetooth is enabled on your smartphone.
4. Once connected, you can manage users, view unlock records, and remotely unlock the door.

## Your Smart Housekeeper SMS Alert Anytime

Tuya APP, smart your life and your security



**Image:** Screenshots demonstrating Tuya App features, including user member management, notifications for "Back Home" alerts, general alarm alerts, and a "Hijack Alarm" feature with password or fingerprint.

### 5.2. Fingerprint Registration

The lock uses a semiconductor fingerprint sensor for quick and accurate recognition.

1. Access the fingerprint management section within the Tuya APP or follow the lock's on-device instructions (refer to the detailed manual for specific steps).
2. Place your finger on the sensor multiple times as prompted to register your fingerprint.
3. Ensure your entire fingerprint is scanned for optimal recognition.
4. You can register up to 100 users.

## Semi-conductor Fingerprint Sensor 360 Degree Recognition

Quick access with fingerprint with low false recognition rate, good for old man or kids

**0.3** s

Quick Recognition

**100** USERS

Large capacity user



### High-quality Chips

With imported chip and rigorous algorithm Ensure high speed and low power consumption



### Low Battery Alarm

Powered by CR123A(Alkaline)

**Image:** Illustration of the semi-conductor fingerprint sensor with 360-degree recognition, highlighting quick recognition (0.3s) and large user capacity (100 users). Also shows high-quality chips and a low battery alarm indicator.

## 5.3. IC Card Registration

Register the included IC cards for convenient tap-to-unlock access.

1. Initiate IC card registration through the Tuya APP or the lock's interface.
2. Present the IC card to the card sensing area on the lock when prompted.
3. Confirm successful registration.



### Smart IC Card

Easy to manage, high security, anti-copying, the elderly and children can use IC cards to open the door.



No worry the tesla circuit provide you high security



### Water proof

Waterproof and antifouling lasting as new, first-class touch and quick recognition



### Level C Security Lock core

Equipped with key unlock, technical unlock time, more than 270 hours

**Image:** Displays the use of a Smart IC Card for unlocking and highlights the waterproof design of the lock. Also mentions Level C Security Lock core.

## 6. OPERATION

The Dioche S1 Smart Door Lock offers four primary methods for unlocking.



**Image:** A collage showing the four unlocking methods: Fingerprint Unlock, IC Card Unlock, Tuya APP Unlock, and Key Unlock.

### **6.1. Fingerprint Unlock**

Place your registered finger on the fingerprint sensor. The lock will unlock within 0.3 seconds if the fingerprint is recognized.

### **6.2. IC Card Unlock**

Hold a registered IC card near the card sensing area on the lock. The lock will unlock upon successful recognition.

### **6.3. Tuya APP Unlock**

Open the Tuya Smart APP on your smartphone. If within Bluetooth range, you can tap and hold the unlock button in the app to open the door. Remote unlocking is also possible if a compatible gateway is configured (sold separately).

### **6.4. Mechanical Key Unlock**

In case of battery depletion or electronic malfunction, use the provided mechanical keys to unlock the door manually. Insert the key into the emergency key slot and turn to unlock.

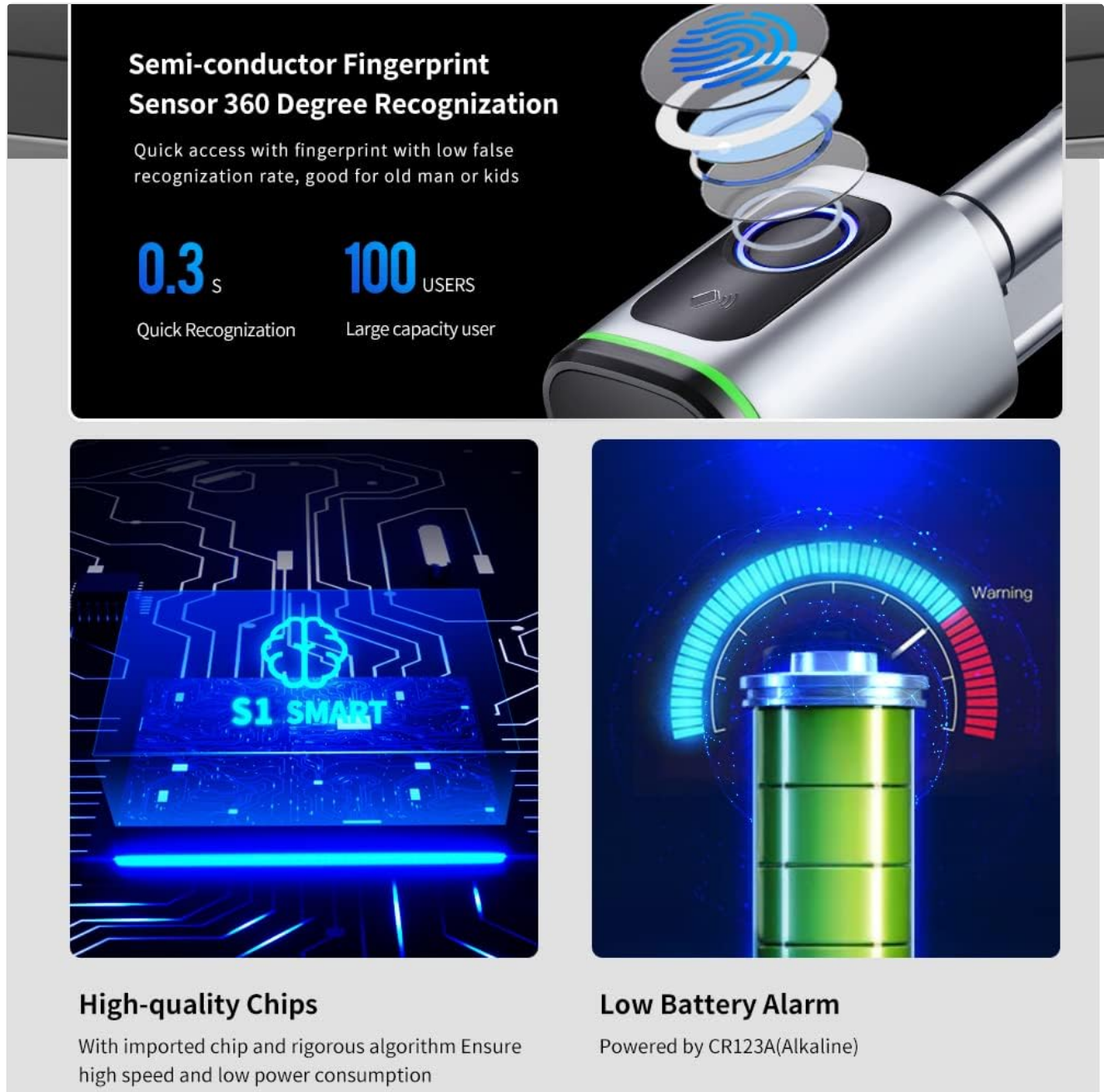
## 6.5. Automatic Locking

For added security, the lock automatically engages after 5 seconds of unlocking.

## 7. MAINTENANCE

### 7.1. Battery Replacement

The lock is powered by a CR123A battery. When the battery level is low, the lock will provide a warning. Replace the battery promptly to ensure continuous operation.



**Semi-conductor Fingerprint Sensor 360 Degree Recognition**

Quick access with fingerprint with low false recognition rate, good for old man or kids

**0.3** s Quick Recognition

**100** USERS Large capacity user

**High-quality Chips**

With imported chip and rigorous algorithm Ensure high speed and low power consumption

**Low Battery Alarm**

Powered by CR123A(Alkaline)

**Image:** A visual representation of a battery with a warning indicator for low battery level, powered by CR123A (Alkaline).

### 7.2. Emergency Power

If the battery completely depletes, you can provide emergency power using a Type-C USB cable connected to a power bank. Connect the cable to the Type-C emergency power interface on the lock to temporarily power it and gain access.

### 7.3. Cleaning

Wipe the lock's surface with a soft, dry cloth. Avoid using abrasive cleaners or solvents that could damage the finish or electronic components. The lock has an IP5X rating, indicating protection against dust ingress, but it is not fully waterproof for submersion.

## 8. TROUBLESHOOTING

Problem	Possible Cause	Solution
Lock does not respond.	Low or depleted battery.	Replace the CR123A battery or use the Type-C emergency power interface.
Fingerprint not recognized.	Finger is wet, dirty, or improperly placed. Fingerprint not registered.	Ensure finger is clean and dry, and placed correctly on the sensor. Re-register fingerprint if issues persist.
IC card not working.	IC card not registered or damaged.	Register the IC card via the Tuya APP. Try a different registered card.
Tuya APP cannot connect to the lock.	Bluetooth is off. Lock is out of range. App not paired.	Ensure Bluetooth is enabled on your phone. Move closer to the lock. Re-pair the device in the Tuya APP.
Lock is stiff or difficult to turn.	Improper installation or alignment.	Check the installation and alignment of the cylinder and components. Consult the detailed manual or a professional.

## 9. SPECIFICATIONS

- **Model:** Diocheghea1iv675-5S
- **Color:** Silver
- **Material:** Aluminum Alloy + Brass
- **Unlock Methods:** APP, Fingerprint, Key-card, Manual Key
- **Fingerprint Sensor:** Semiconductor, 360-degree recognition
- **Fingerprint Recognition Speed:** 0.3 seconds
- **User Capacity:** Up to 100 users (fingerprints)
- **IP Class:** IP5X (Dust protected)
- **Door Thickness Compatibility:** 35-50mm
- **Power Supply:** CR123A Battery
- **Emergency Power:** Type-C USB Interface
- **Automatic Locking:** Yes, after 5 seconds
- **Product Dimensions:** Approximately 10.24"L x 3.94"W

## 10. WARRANTY AND SUPPORT

For warranty information and technical support, please refer to the warranty card included in your package or contact Dioche customer service through the official website or your point of purchase. Please have your model number (Diocheghea1iv675-5S) and purchase date available when contacting support.

