



[Manuals.plus](#) /

› [Yoidesu](#) /

› Yoidesu 11.6 Inch HD External Display User Manual

Yoidesu Yoidesuask0m41wxc-12

Yoidesu 11.6 Inch HD External Display User Manual

Model: Yoidesuask0m41wxc-12

[Introduction](#)

[Package Contents](#)

[Setup](#)

[Operation](#)

[Maintenance](#)

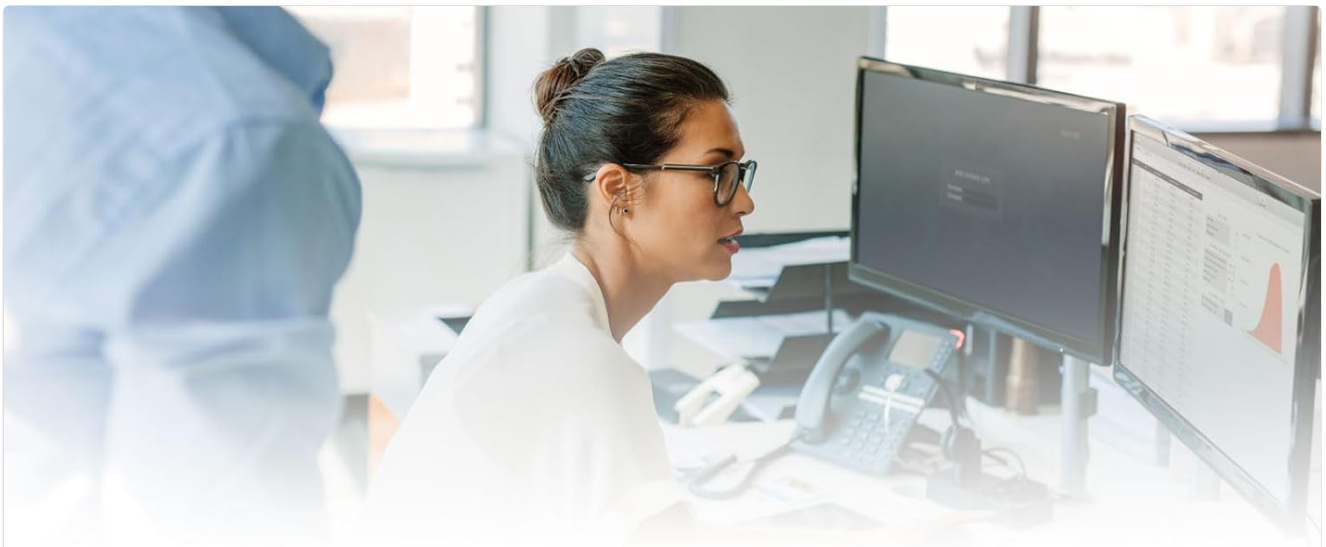
[Troubleshooting](#)

[Specifications](#)

[Support](#)

1. INTRODUCTION

This manual provides instructions for the Yoidesu 11.6 Inch HD External Display (Model: Yoidesuask0m41wxc-12). This versatile monitor features a 1920x1080 resolution and multiple input interfaces including BNC, AV, VGA, High Definition Multimedia Interface (HDMI), USB, MIC, and AUX. It is designed for various applications such as car reversing systems, gaming, and professional work environments. Please read this manual thoroughly before using the product to ensure proper operation and longevity.



11.6 Inch HD External Display

1920x1080 Resolution

Provide clear visual effects.

Bring users a comfortable and spectacular viewing experience.

Portable and easy to use

It provides several different input ports, including BNC, AV, VGA, High Definition Multimedia Interface, USB, MIC, AUX ports

Suitable for games, PC, Laptop, surveillance cameras, etc.



Image 2.1: Rear view of the display, illustrating the various input ports for connectivity.

3. SETUP

The Yoidesu 11.6 Inch HD External Display is designed for simple plug-and-play operation. Follow these steps to set up your display:

1. **Assemble the Stand:** Attach the display to the provided stand. Ensure it is securely fastened. The double-sided tape may be used for additional stability or alternative mounting if desired.
2. **Connect Power:** Plug the power adapter into the display's power input port, then connect the adapter to a standard electrical outlet (100-240V AC).
3. **Connect Input Source:** Choose the appropriate cable (e.g., HDMI, VGA, AV, BNC) for your device and connect it to the corresponding input port on the display and your source device (e.g., computer, gaming console, car camera, security DVR).
4. **Power On:** Press the power button on the display. The display should automatically detect the input signal. If not, you may need to manually select the input source using the display's menu buttons.



Image 3.1: Close-up of the display's back panel, showing the control buttons for power and menu navigation.

4. OPERATING INSTRUCTIONS

4.1 Power On/Off

- To power on the display, press the **Power** button located on the back panel.
- To power off the display, press and hold the **Power** button until the screen turns off.

4.2 Input Source Selection

The display can automatically detect the active input source. If multiple sources are connected or the display does not automatically switch, you can manually select the input:

- Press the **MODE** button (or similar input select button) on the back panel to cycle through available input sources (BNC, AV, VGA, HDMI, USB).
- Alternatively, access the On-Screen Display (OSD) menu and navigate to the "Input" or "Source" option to select your desired input.

4.3 Menu Navigation (OSD)

Use the buttons on the back panel to navigate the On-Screen Display (OSD) menu for picture adjustments and other settings.

- Press the **MENU** button to open the OSD menu.
- Use the **Up (+)** and **Down (-)** buttons to navigate through menu options.

- Press the **MODE** button (or similar "Enter" button) to confirm a selection or enter a sub-menu.
- Press the **MENU** button again to exit the OSD menu.

Common OSD settings include:

- **Picture Settings:** Brightness, Contrast, Color Temperature, Aspect Ratio.
- **Audio Settings:** Volume (for AUX/MIC outputs if applicable).
- **Input Source:** Manual selection of BNC, AV, VGA, HDMI, USB.

4.4 USB Multimedia Playback

The display supports direct playback of various file formats from USB drives.

1. Insert a USB drive into the USB port on the display.
2. Select "USB" as the input source using the **MODE** button or OSD menu.
3. Navigate through the files on your USB drive using the OSD menu buttons.
4. Select the desired media file (e.g., video, photo, music) to begin playback.

Full HD 1920x1080 Resolution

This 11.6 inch display boasts a high definition resolution of 1920x1080, delivers you awesome viewing experience. Ideal for work, gaming and entertainment.



Image 4.1: The display showcasing its Full HD 1920x1080 resolution with a colorful image.

5. MAINTENANCE

Proper maintenance ensures the longevity and optimal performance of your display.

- **Cleaning the Screen:** Gently wipe the screen with a soft, lint-free cloth. For stubborn marks, slightly dampen the cloth with water or a non-abrasive, screen-safe cleaning solution. Do not spray liquid directly onto the screen.
- **Cleaning the Casing:** Use a soft, dry cloth to wipe the exterior casing. Avoid using harsh chemicals or abrasive cleaners.
- **Ventilation:** Ensure the ventilation openings on the back of the display are not blocked to prevent overheating.
- **Storage:** When not in use for extended periods, store the display in a cool, dry place, away from direct sunlight and extreme temperatures.
- **Power Disconnection:** Always disconnect the power adapter from the wall outlet before cleaning or when the display will not be used for a long time.

6. TROUBLESHOOTING

If you encounter issues with your display, refer to the following common problems and solutions:

Problem	Possible Cause	Solution
No power / Display does not turn on	Power cable not connected; Power adapter faulty; Power outlet not working.	Ensure power cable is securely connected. Test the power adapter with another device if possible. Try a different power outlet.
No signal / Blank screen	Input cable not connected properly; Incorrect input source selected; Source device not powered on or outputting signal.	Check all input cable connections. Select the correct input source using the MODE button. Ensure your source device is on and configured to output video.
Poor image quality / Distorted image	Incorrect resolution setting on source device; Faulty cable; Display settings (brightness, contrast) are incorrect.	Adjust the resolution on your source device to 1920x1080. Try a different input cable. Adjust picture settings via the OSD menu.
No sound (if using AUX/MIC)	Volume too low; Audio cable not connected; Source device not outputting audio.	Increase volume via OSD menu or source device. Ensure audio cables are correctly connected. Check audio settings on your source device.

7. SPECIFICATIONS

Model Number	Yoidesuask0m41wxc-12
Screen Size	11.6 Inches
Resolution	1920 x 1080 (Full HD)
Interface Types	BNC, AV, VGA, High Definition Multimedia Interface (HDMI), USB, MIC, AUX
Material	ABS

Power Input	100-240V AC (via included adapter)
Item Weight	2.53 pounds (approx. 1.15 kg)
Package Dimensions	14.57 x 9.84 x 2.36 inches (approx. 37 x 25 x 6 cm)
Manufacturer	Yoidesu

8. WARRANTY AND SUPPORT

For warranty information, technical support, or service inquiries, please contact the manufacturer, Yoidesu, or your point of purchase. Keep your purchase receipt as proof of purchase for warranty claims.

You can often find support contact details on the manufacturer's official website or through the retailer where you purchased the product.